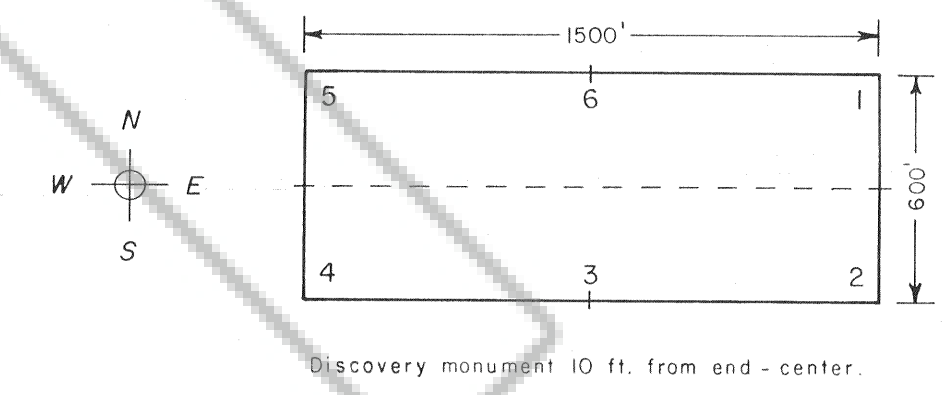


* Summit Claim Nos. 51 - 70 are contiguous with Summit Claim Nos. 1 - 50 (see Sheet 1).

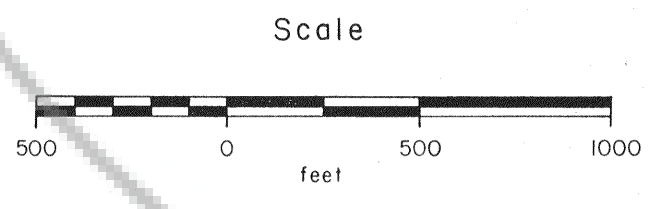
SUMMIT 51	oo	SUMMIT 52	oo	SUMMIT 53	oo	SUMMIT 54
SUMMIT 49	oo	SUMMIT 50	oo	SUMMIT 55	oo	SUMMIT 56
SUMMIT 47	oo	SUMMIT 48	oo	SUMMIT 57	oo	SUMMIT 58
SUMMIT 45	oo	SUMMIT 46	oo	SUMMIT 59	oo	SUMMIT 60
SUMMIT 43	oo	SUMMIT 44	oo	SUMMIT 61	oo	SUMMIT 62
SUMMIT 41	oo	SUMMIT 42	oo	SUMMIT 63	oo	SUMMIT 64
SUMMIT 65	oo	SUMMIT 66				
SUMMIT 67	oo	SUMMIT 68				
SUMMIT 69	oo	SUMMIT 70				

10 11
15 14



Summit Claim Nos. 1 - 64 located May 11, 12, & 18, 1986 ;
Summit Claim Nos. 65 - 70 located June 16, 1986 by :

RESOURCE ASSOCIATES OF ALASKA, INC.
111 SW Columbia, Suite 800
Portland, Oregon 97201



FILED AT THE REQUEST OF *Resource Assoc. of Alaska, Inc.*
on Aug 29 1986 at 11 mins. past 1p M
EUREKA COUNTY, NEVADA RECORDS OF
File No. 104590 M.N. REDALEATI, Recorder
Fee \$ 20.00

SCALE: 1 in. = 500 ft.	RESOURCE ASSOCIATES OF ALASKA, INC. 111 S W COLUMBIA, SUITE 800 PORTLAND, OREGON 97201
SHEET NO.: 2 of 2	
DRAFTED BY: K. Russell	Summit Lode Claim Block T 23 N - R 48 E Surveyed Secs. 1, 2, 11, 12, 13, 14 Eureka County, Nevada
REVISIONS:	