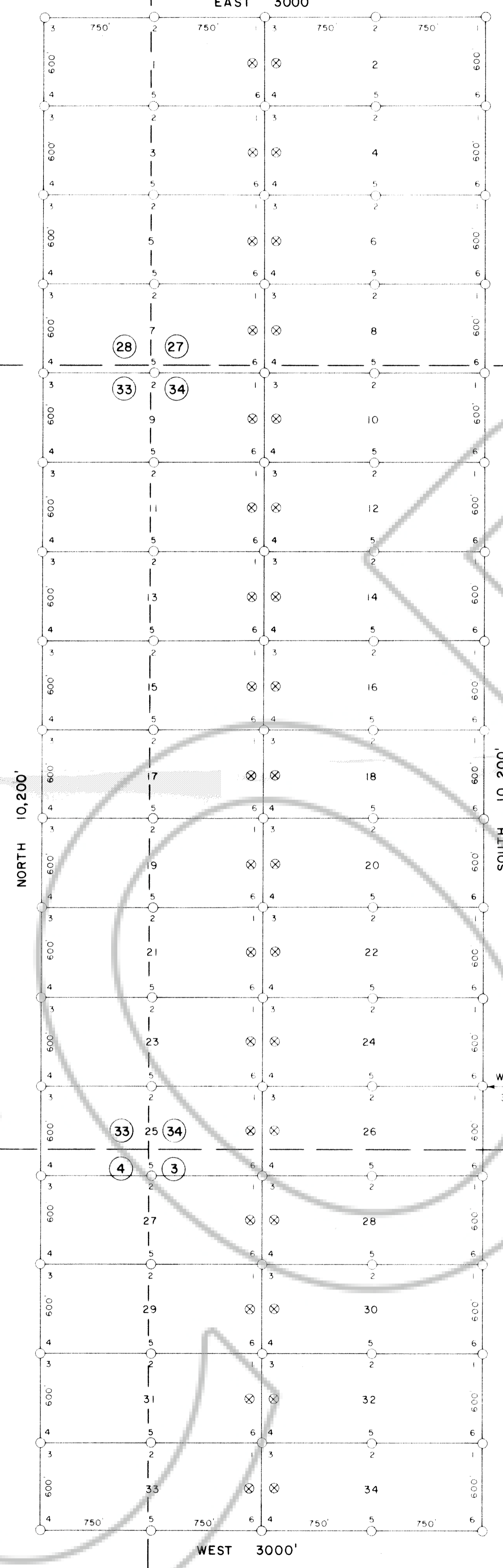


R. 51 E.

EAST 3000'



29 28

32 33

32 33

5 4

T. 23 N.

T. 22 N.

TRUE NORTH

SCALE - 1" = 500'

LEGEND

- ⊗ - 4" DIA. x 4' DURABLE PLASTIC PIPE LOCATION MONUMENT
- - 4" DIA. x 4' DURABLE PLASTIC PIPE MONUMENT

INDICATES SECTION CORNER - SECTION LINES ARE PROJECTED

NOTE

ALL LOCATION MONUMENTS 10' FROM END LINE OF CLAIM

LOCATION DATES

JULY 15, 1986 - 1 THROUGH 34

FILED AT THE REQUEST OF Atlas Precious Metals
 on Sept 5, 1986 at 48 mins past 10 A M.
 EUREKA COUNTY, NEVADA RECORDS OF
 M.N. REBALEATI, Recorder
 File No. 104674 Fee \$ 570.00

MAP OF THE
GLEN LODE MINING CLAIMS
 EUREKA COUNTY, NEVADA

LOCATED BY RICHARD D INBERG
 AGENT FOR
ATLAS PRECIOUS METALS INC.
 P.O. BOX 1207
 MOAB, UTAH 84532
 AUGUST 15, 1986

APEX SURVEYING INC. RIVERTON, WYOMING

104674