

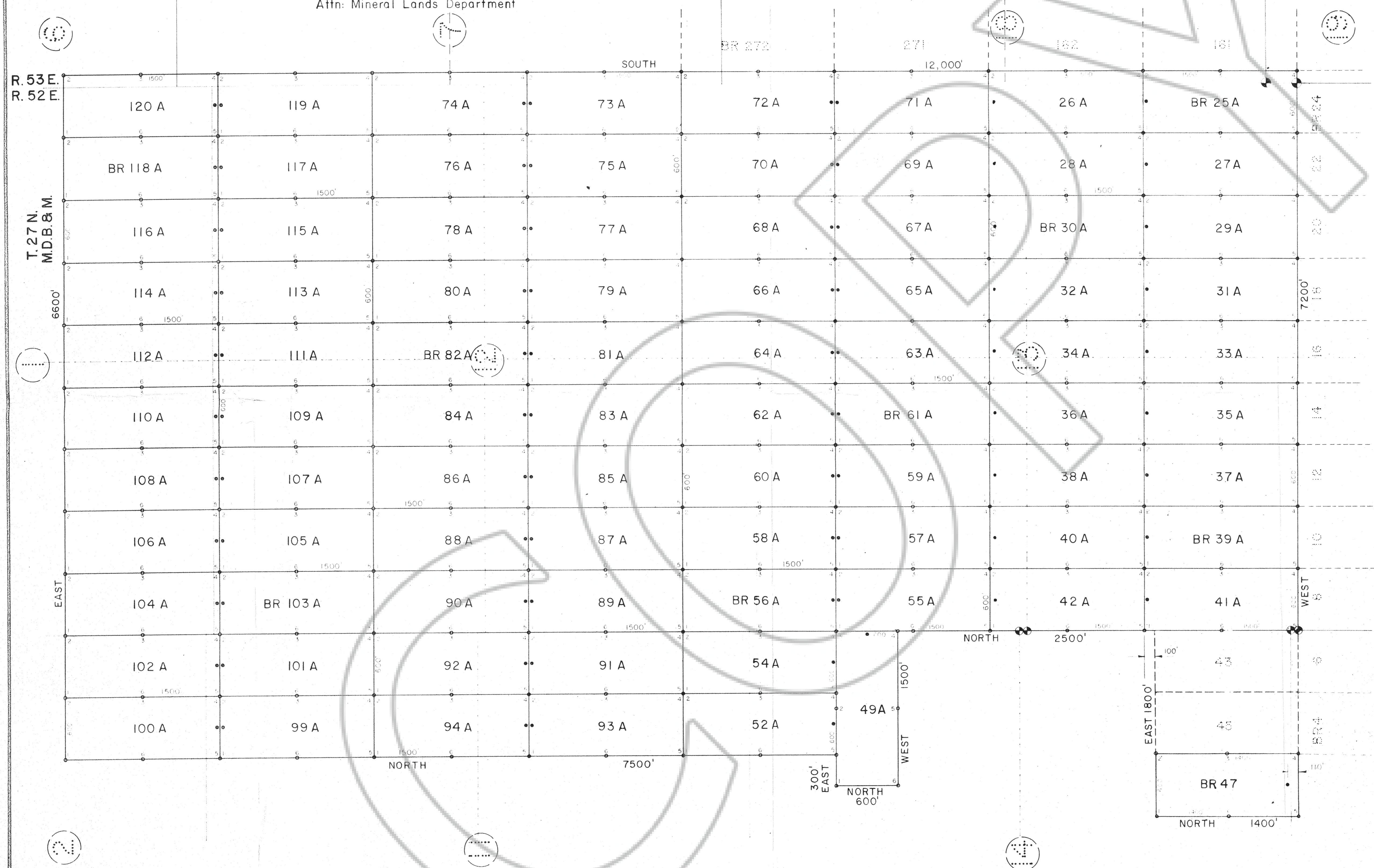
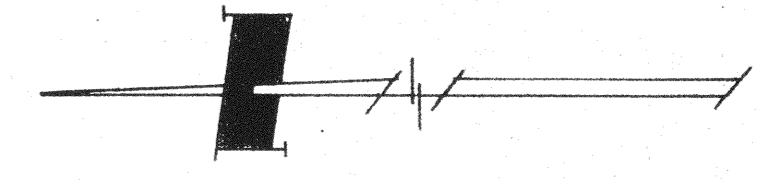
BR LODE CLAIM GROUP 25A-42A, 47, 49A, 52A, 54A-94A, 99A-120A

Located in Sections 1, 2, 11, 12, 13, 14, and 23 T. 27 N., R. 52 E. and
6, 7, 18, and 19 T. 27 N., R. 53 E., M.D.B. & M., Eureka County, Nevada

Located January 28, 1984 By:
ATLANTIC RICHFIELD COMPANY, Through its Division
ANACONDA MINERALS COMPANY
555 17th Street
Denver, Colorado 80202
Attn: Mineral Lands Department

FILED AT THE REQUEST OF Ronald Willden
on Sept 26 1986 at 57 mins past 10 A
EUREKA COUNTY, NEVADA M.N. REDEALTY, Recorder
File No. 104926 Fee \$ 135.00

LEGEND
 ● Found 1924 GLO Brass Cap
 ○ 4" Diameter x 4 1/2" post with Location Certificate and marked tag attached Set 10' from end line unless otherwise noted
 ○ 4" Diameter x 4 1/2" post with marked tag attached at each corner and side center position.
 NOTE: All claims are 600' x 1500' unless otherwise noted.



BR Nos. 26A, 28A, 30A, 32A, 34A, 36A, 38A, 40A, and 42A relocated September 13, 1986

ARMSTRONG & ASSOCIATES, INC.

Architects
Engineers
Planners
Surveyors
Soil Testing
Material Testing
U.S. Mineral Surveyors
Geotechnical Engineers

881 Road Avenue
Grand Junction Colorado 81501
(303) 245-3881

BR LODE CLAIMS
ATLANTIC RICHFIELD COMPANY
c/o ANACONDA MINERALS CO.

Project No. H44257
Date: JAN 28, 1984
Revisions:

Drawn: RCB
Checked:
Approved:

EUREKA CO.
NEVADA