

R.52E.

TRUE NORTH

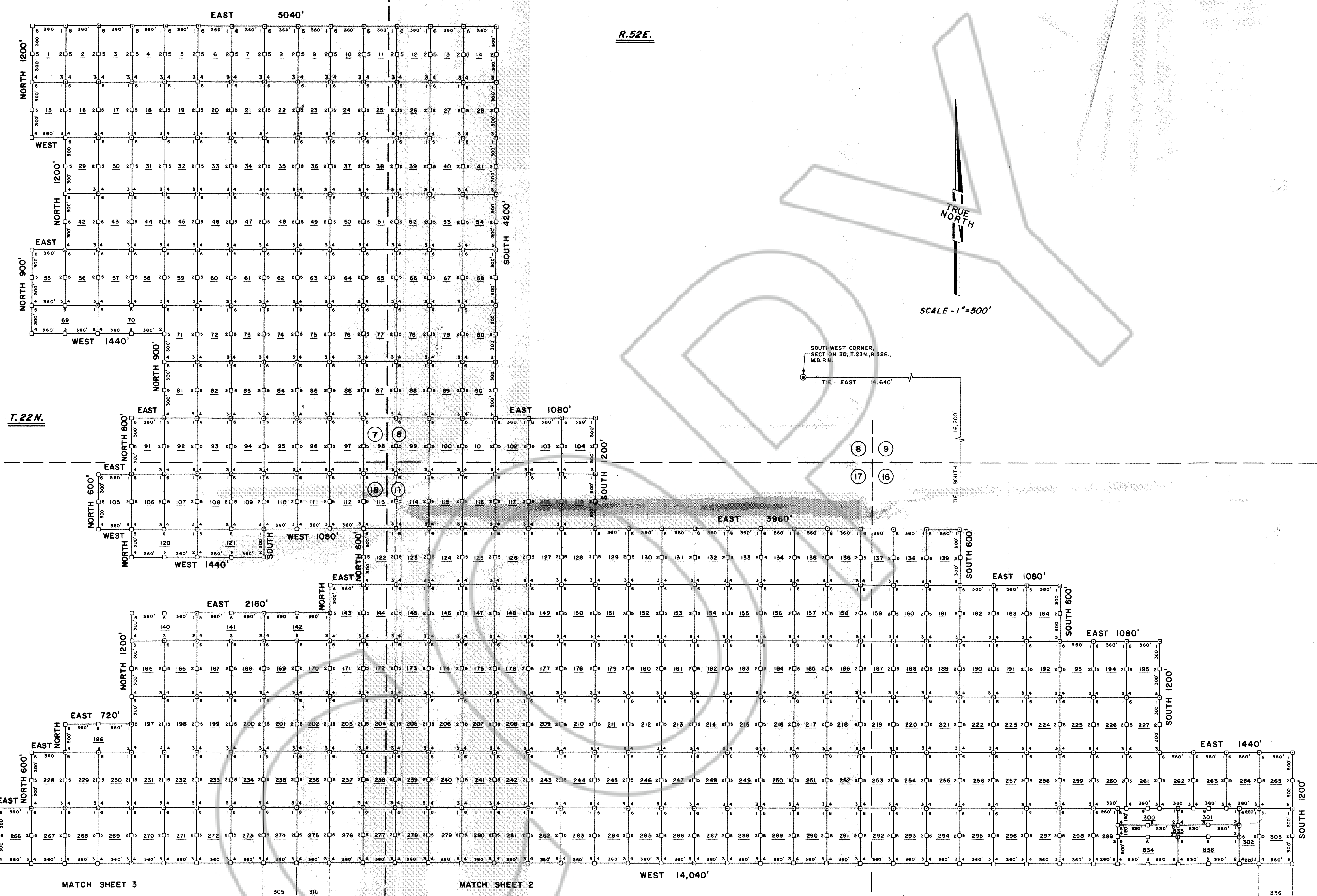
SCALE - 1" = 500'

SOUTHWEST CORNER, SECTION 30, T.23N., R.52E., M.D.P.M.

TIE - EAST 14,640'

16,200'

TIE - SOUTH



T.22N.

LEGEND

- - INDICATES 4" x 4" x 5' WOOD LOCATION MONUMENT
- - INDICATES 4" x 4" x 5' WOOD MONUMENT
- ⑦ ⑧ INDICATES SECTION CORNER
- ⑱ ⑲

NOTE

1) SECTION LINES ARE PROJECTED

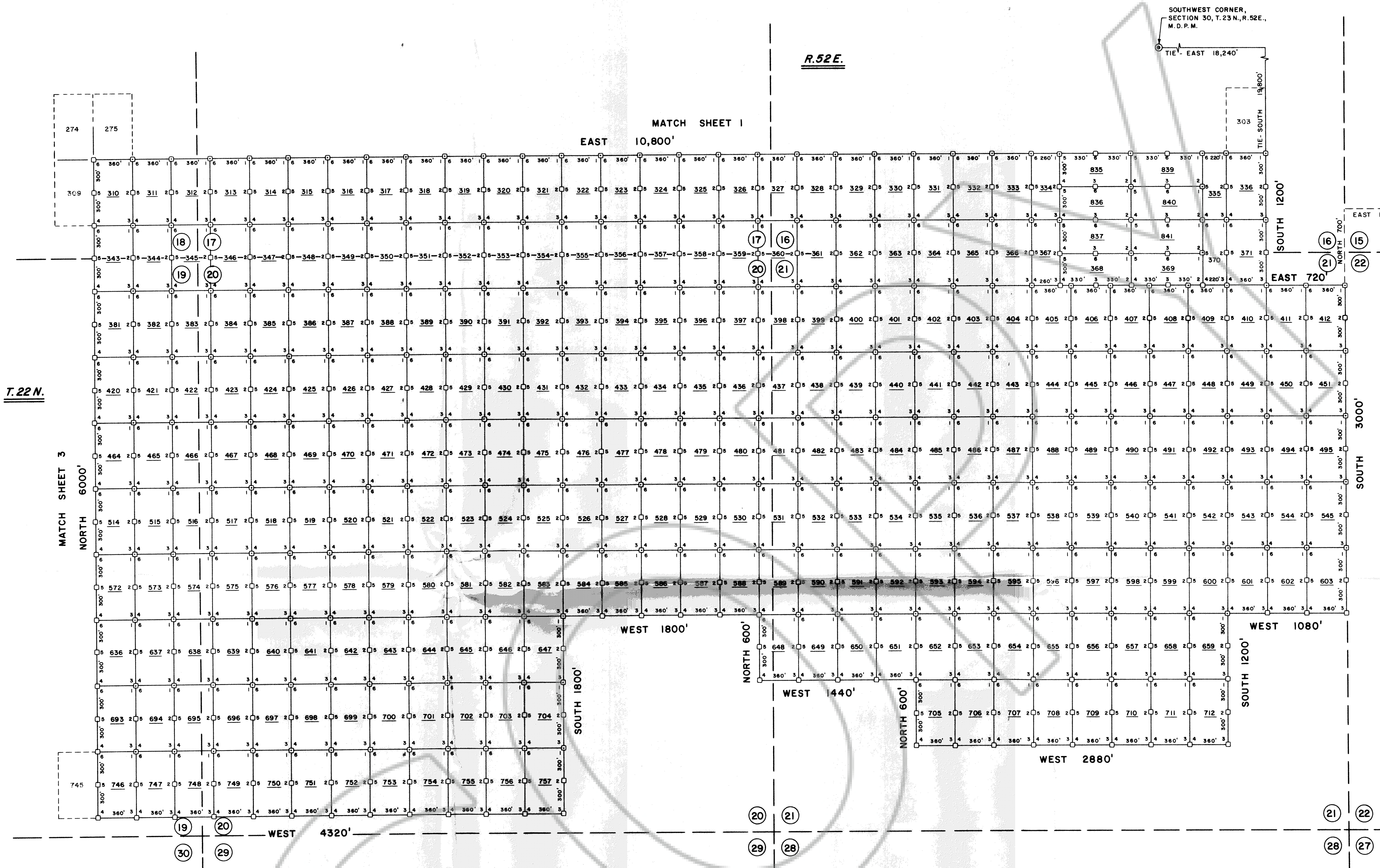
LOCATION DATES

- AUGUST 26, 1986 - 1 THROUGH 80
- AUGUST 27, 1986 - 81 THROUGH 193, 195 THROUGH 227, 833, 834 AND 838
- AUGUST 28, 1986 - 228 THROUGH 303
- AUGUST 29, 1986 - 194

SHEET 1 OF 4

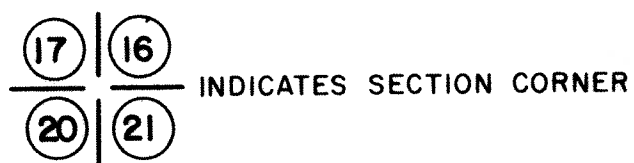
MAP OF THE
FIRST AMENDED MT MILLSITE CLAIMS
EUREKA COUNTY, NEVADA
 LOCATED BY: RICHARD D. INBERG
 AGENT FOR
EXXON CORPORATION
 C/O EXXON COAL AND MINERALS COMPANY
 P.O. BOX 1314
 HOUSTON, TEXAS 77251-1314
 OCTOBER 2, 1986
APEX SURVEYING INC. RIVERTON, WYOMING

FILED AT THE REQUEST OF **EXXON CORP.**
 on Nov 3, 1986 at 09 mins past 4 P. M.
 EUREKA COUNTY, NEVADA
 M.N. REDALEATI, Recorder
 File No. **106195** Fee \$ 4,575.00



LEGEND

- — INDICATES 4" x 4" x 5' WOOD LOCATION MONUMENT
- — INDICATES 4" x 4" x 5' WOOD MONUMENT



NOTE

- 1) SECTION LINES ARE PROJECTED

LOCATION DATES

- AUGUST 28, 1986 - 310 THROUGH 336
- 343 THROUGH 371
- 381 THROUGH 412
- 420 THROUGH 451
- 464 THROUGH 495
- 514 THROUGH 545
- 829 THROUGH 832
- AUGUST 29, 1986 - 572 THROUGH 603
- 636 THROUGH 659
- 693 THROUGH 712
- 746 THROUGH 757

SHEET 2 OF 4

MAP OF THE
FIRST AMENDED MT MILLSITE CLAIMS
EUREKA COUNTY, NEVADA

LOCATED BY: RICHARD D. INBERG

AGENT FOR

EXXON CORPORATION
C/O EXXON COAL AND MINERALS COMPANY
P.O. BOX 1314

HOUSTON, TEXAS 77251-1314
OCTOBER 2, 1986

APEX SURVEYING INC. RIVERTON, WYOMING

FILED AT THE REQUEST OF **EXXON CORP.**
on Nov 3, 1986, at 09 mins past 41 M.
RECORDS OF
EUREKA COUNTY, NEVADA M.N. REBALEATI, Recorder
File No. 106195 Fee \$ 4275.00

R.51E.

R.51 1/2 E.

R.52E.

SOUTHWEST CORNER,
SECTION 30, T.23N., R.52E.,
M.D.P.M.

WEST
480'

TRUE
NORTH

SCALE - 1" = 500'

EAST 2160'

NORTH 1200'

EAST 360'

NORTH 1200'

EAST 360'

NORTH 900'

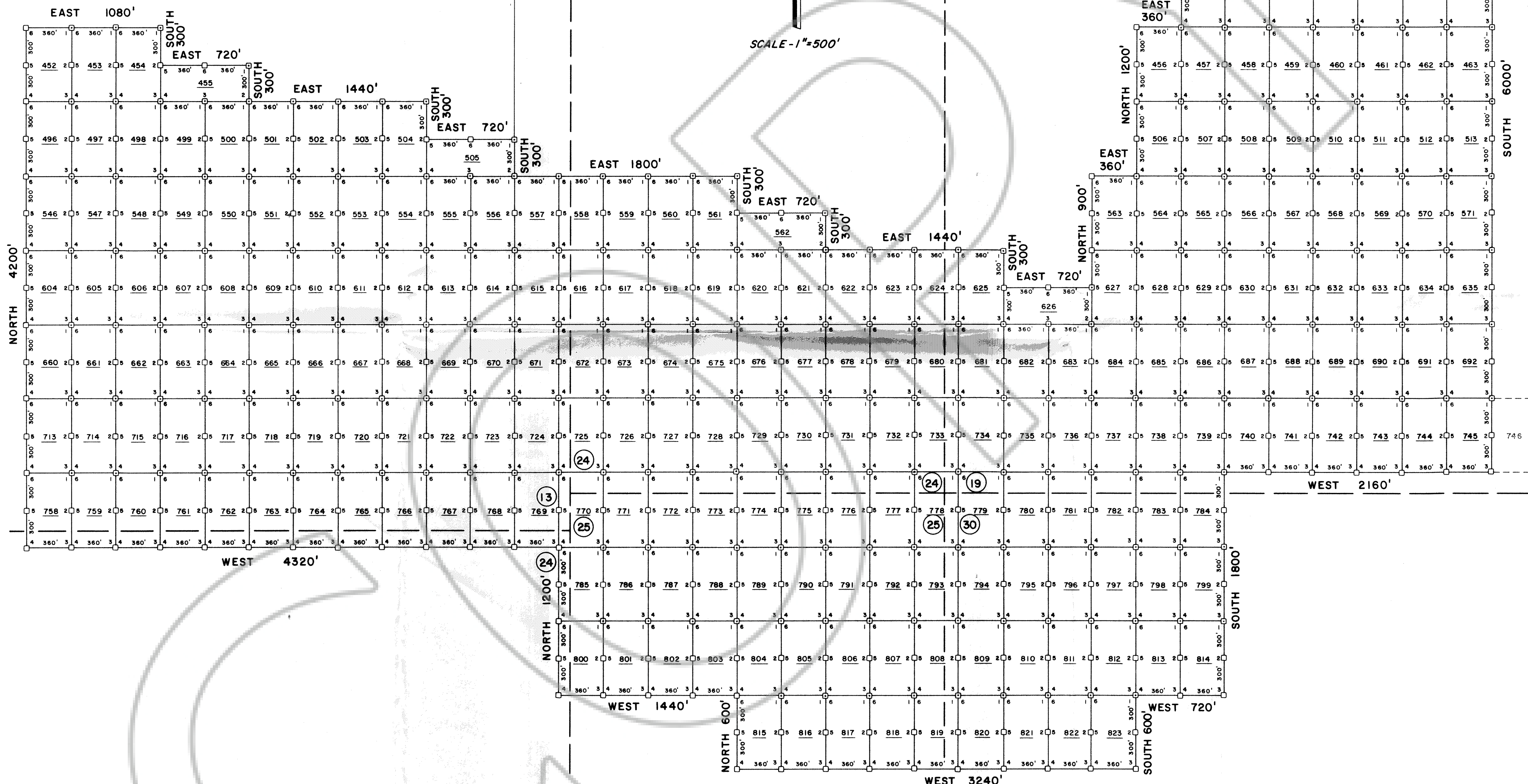
EAST 720'

NORTH 1800'

WEST 720'

SOUTH 6000'
MATCH SHEET 2

T.22N.



LEGEND

- - INDICATES 4" x 4" x 5' WOOD LOCATION MONUMENT
- - INDICATES 4" x 4" x 5' WOOD MONUMENT

13 18 INDICATES SECTION CORNER
24 19

NOTE

- 1) SECTION LINES ARE PROJECTED

LOCATION DATES

- AUGUST 28, 1986 - 304 THROUGH 309
- 337 THROUGH 342
- 374 THROUGH 380
- 413 THROUGH 419
- 456 THROUGH 463
- 506 THROUGH 513
- AUGUST 29, 1986 - 452 THROUGH 455
- 496 THROUGH 505
- 546 THROUGH 571
- 604 THROUGH 635
- 673 THROUGH 692
- 726 THROUGH 745
- 771 THROUGH 823
- AUGUST 30, 1986 - 660 THROUGH 672
- 713 THROUGH 725
- 758 THROUGH 770

FILED AT THE REQUEST OF **EXXON CORP.**
 on Nov 3 1986 at 09 mins past 4 P.M.
 RECORDS OF
 EUREKA COUNTY, NEVADA M.N. REBALEATI, Recorder
 File No. 106195 Fee \$3,690.00

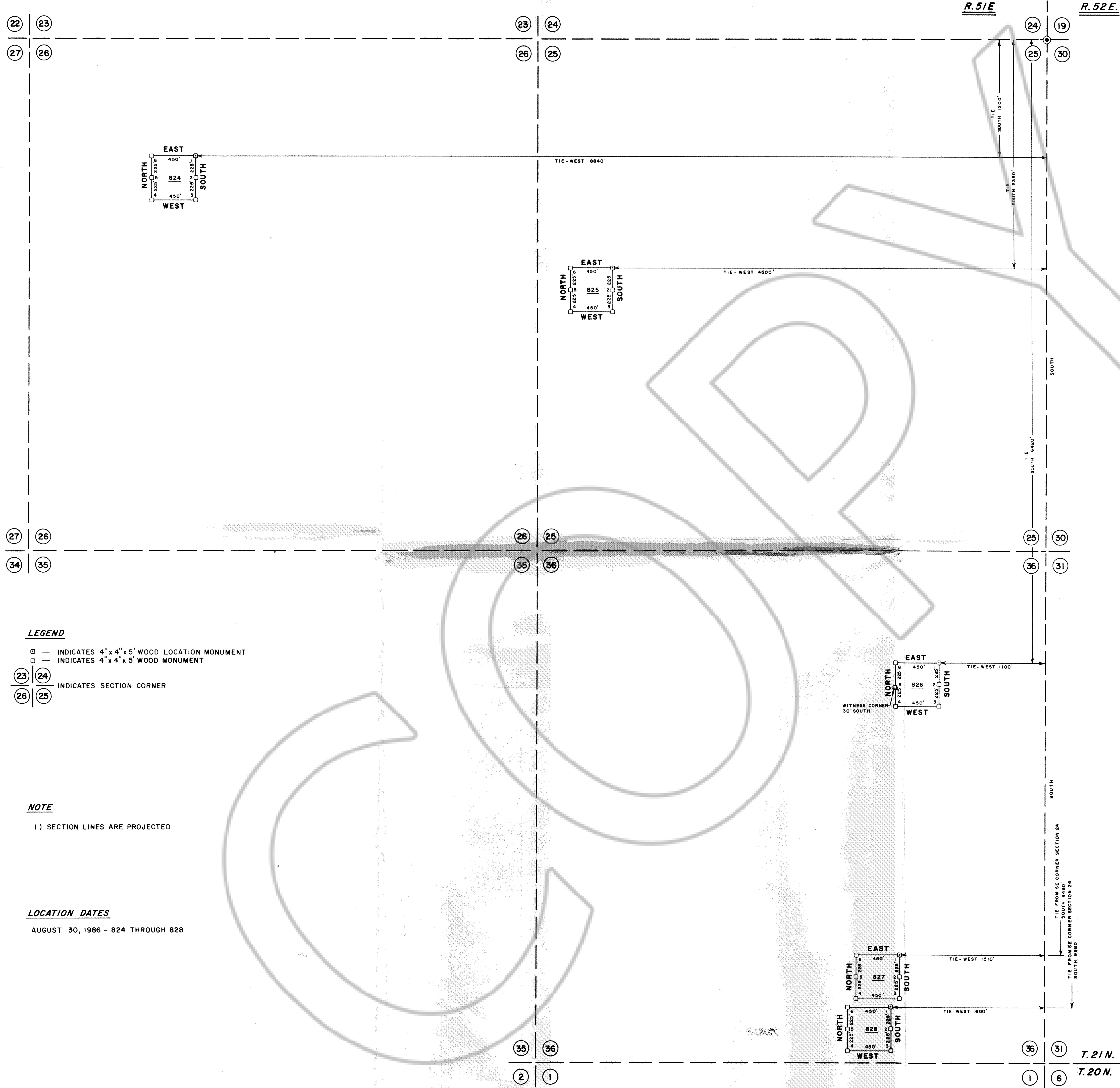
106195

SHEET 3 OF 4

MAP OF THE
FIRST AMENDED MT MILLSITE CLAIMS
 EUREKA COUNTY, NEVADA

LOCATED BY: RICHARD D. INBERG
 AGENT FOR
EXXON CORPORATION
 C/O EXXON COAL AND MINERALS COMPANY
 P.O. BOX 1314
 HOUSTON, TEXAS 77251-1314
 OCTOBER 2, 1986

APEX SURVEYING INC. RIVERTON, WYOMING



LEGEND

- — INDICATES 4" x 4" x 5' WOOD LOCATION MONUMENT
- — INDICATES 4" x 4" x 5' WOOD MONUMENT

23 24 INDICATES SECTION CORNER
26 25

NOTE

1) SECTION LINES ARE PROJECTED

LOCATION DATES

AUGUST 30, 1986 - 824 THROUGH 828

TRUE NORTH

SCALE - 1" = 500'

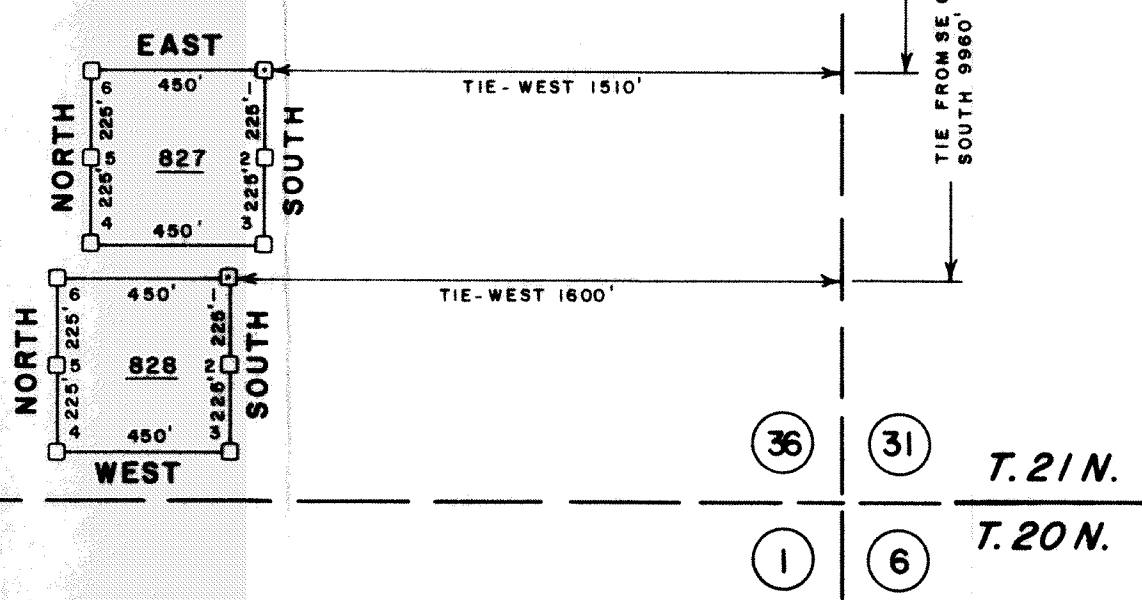
FILED AT THE REQUEST OF **EXXON CORP.**
 on Nov. 3, 1986 at 09 mins past 4 P. M.
 _____ RECORDS OF
 EUREKA COUNTY, NEVADA M.N. REDALEATI, Recorder
 File No. 106195 Fee \$ 75.00

SHEET 4 OF 4

**MAP OF THE
 FIRST AMENDED MT MILLSITE CLAIMS
 EUREKA COUNTY, NEVADA**

LOCATED BY: RICHARD D. INBERG
 AGENT FOR
EXXON CORPORATION
 C/O EXXON COAL AND MINERALS COMPANY
 P.O. BOX 1314
 HOUSTON, TEXAS 77251-1314
 OCTOBER 2, 1986

APEX SURVEYING INC. RIVERTON, WYOMING



106195