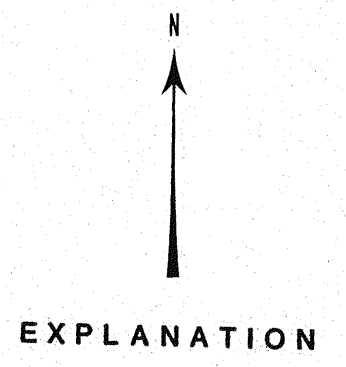
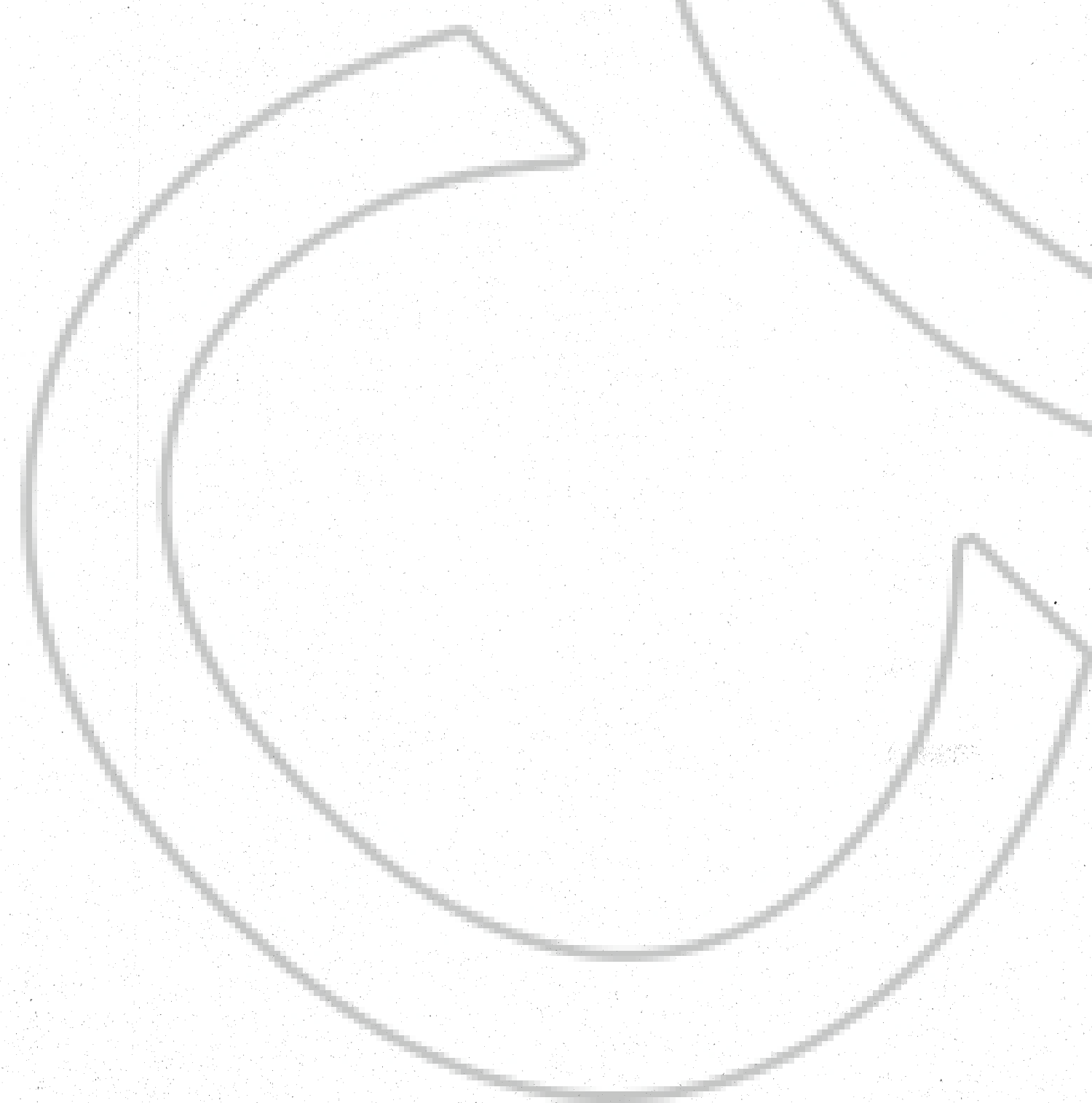


To NE Cor. Sec. 3,  
T 26 N, R 48 E

S 169° E  
7,325 FT.


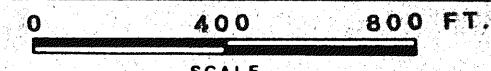


OWNED BY: CORTEZ GOLD MINES



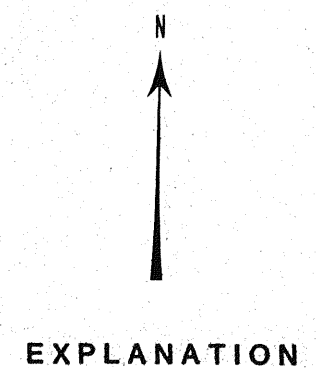
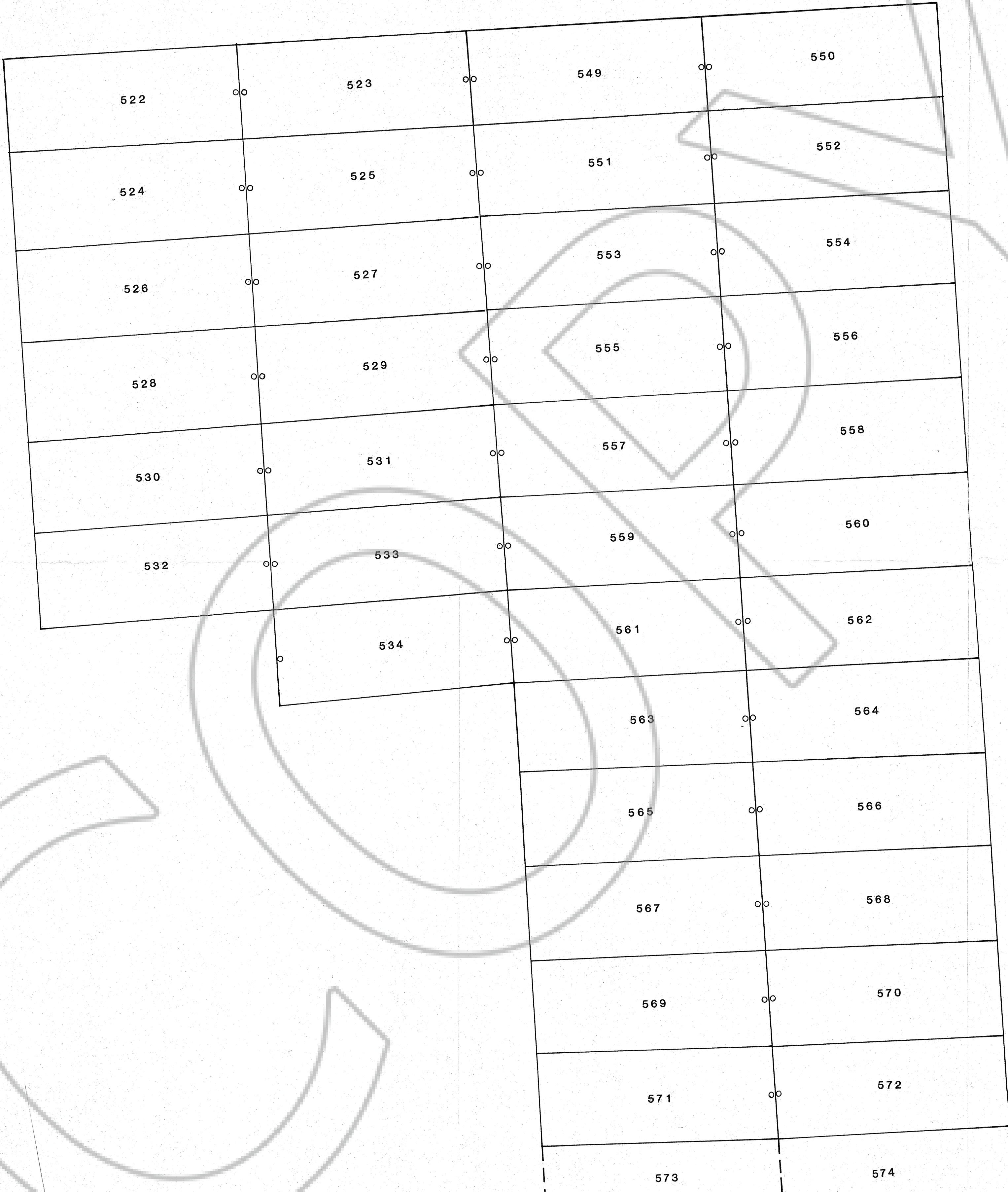
FILED AT THE REQUEST OF Placer U.S. Inc.  
on Nov 17 19 86 at 12 mins past 4 P.M.  
EUREKA COUNTY, NEVADA RECORDS OF  
File No. 106255 M.N. REDALEATI, Recorder  
Fee \$ 5.00

106255

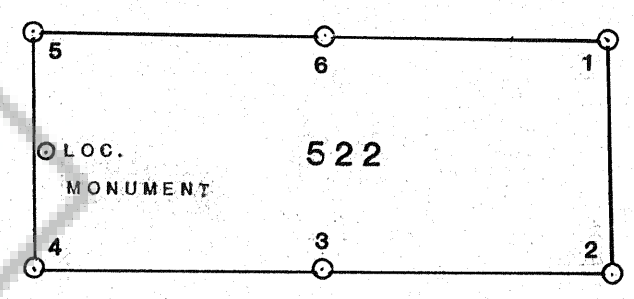
 <b>PLACER U.S. INC.</b> <small>ONE CALIFORNIA STREET SUITE 2500 SAN FRANCISCO, CALIFORNIA 94111</small>	<small>DRAWN:</small> K.A.G.	<small>DATE:</small> AUG. 1986	<small>PROJECT</small> <b>HORSE CANYON</b> <small>EUREKA COUNTY, NEVADA</small>	<small>TITLE</small> <b>NEE LODE CLAIMS</b> <b># 535-thru-548 &amp;</b> <b># 573-thru-586</b> <small>T26N &amp; T27N, R48E M.D.B. &amp; M.</small>	
	<small>DRAFTED:</small> H.H.H.	<small>REVISIONS:</small> OCT. 1986			<small>MAP NO.</small> 2 OF 2
	<small>SCALE</small> 				<small>VENTURE NO:</small>

T 27 N, R 48 E  
T 26 N, R 48 E

N 69° E, 1,100 FT.



EXPLANATION

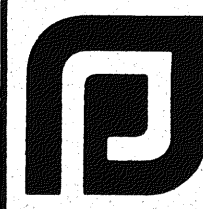


OWNED BY: CORTEZ GOLD MINES

FILED AT THE REQUEST OF Placer U.S. Inc.  
on Nov. 17 1986 at 12 mins past 4 P.M.  
EUREKA COUNTY, NEVADA RECORDS OF  
M.N. REDALEATI, Recorder  
File No. 106255 Fee \$ 5.00

AMENDED MAP

106255



PLACER U.S. INC.

ONE CALIFORNIA STREET SUITE 2500  
SAN FRANCISCO, CALIFORNIA 94111

DRAWN: K.A.G.	DATE: AUG. 1986
DRAFTED: H.H.H.	REVISIONS: OCT. 1986
MAP NO. 1 of 2	VENTURE NO.

PROJECT  
**HORSE CANYON**  
EUREKA COUNTY, NEVADA

0 400' 800' FT.  
SCALE

TITLE  
**NEE LODE CLAIMS**  
# 522-thru-534, &  
# 549-thru-572

T26N & T27N, R48E M.D.B. & M.