

CURVE DATA					
CURVE	Δ	RADIUS	LENGTH	TANGENT	CHORD
C1	15-06-12	176.50	204.69	102.94	204.10
C2	4-06-02	1112.59	79.63	39.83	79.61
C3	90-00-00	20.00	31.42	20.00	20.00
C4	56-26-26	200.00	197.02	107.33	189.15
C5	8-04-20	776.50	109.40	54.79	109.31
C6	19-34-15	250.00	85.39	43.12	84.98

BASIS OF BEARING:

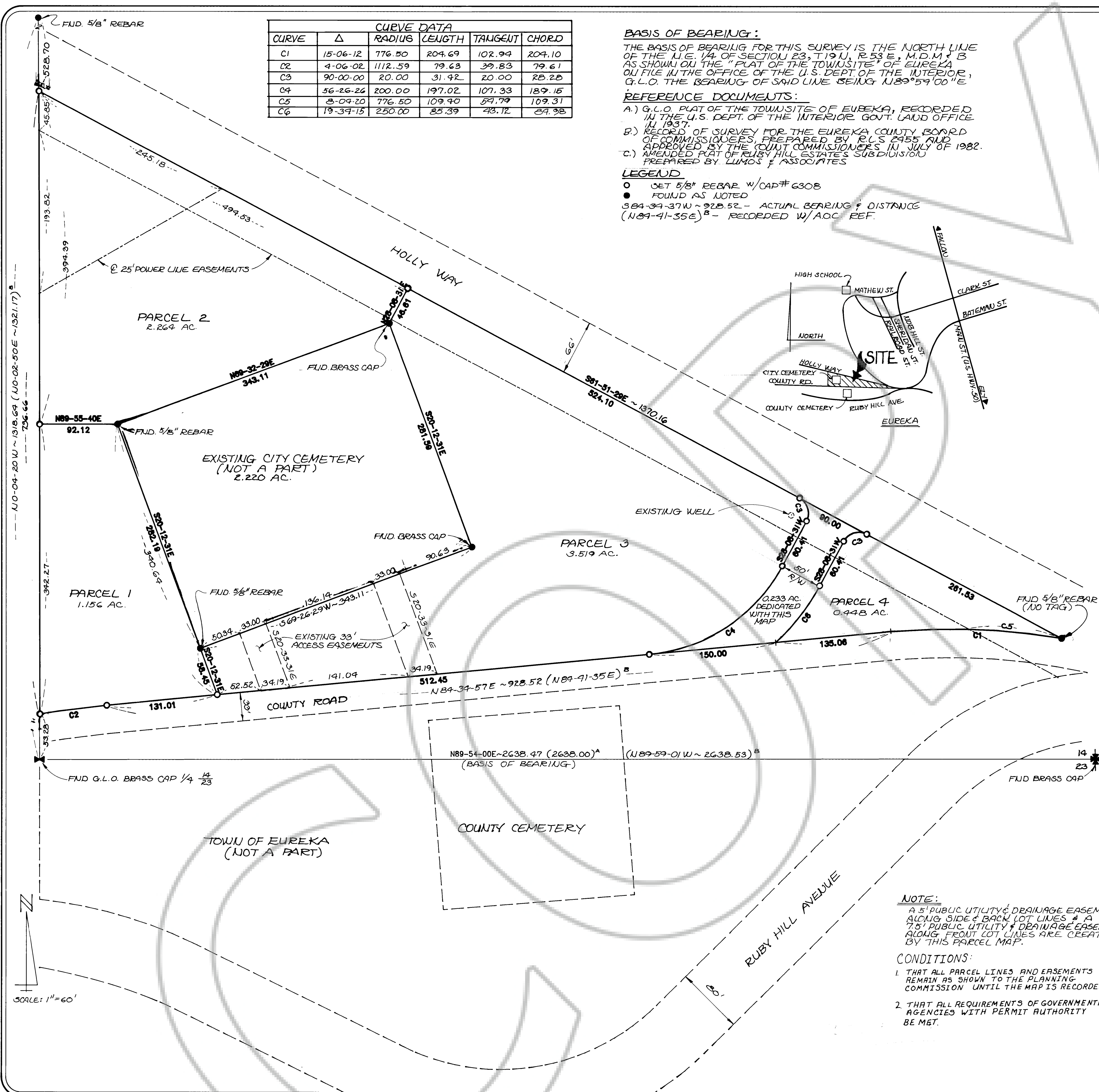
THE BASIS OF BEARING FOR THIS SURVEY IS THE NORTH LINE OF THE 1/4 OF SECTION 23, T.19 N., R.53 E., M.D.B. & M. AS SHOWN ON THE "PLAT OF THE TOWNSITE OF EUREKA" ON FILE IN THE OFFICE OF THE U.S. DEPT. OF THE INTERIOR, G.L.O. THE BEARING OF SAID LINE BEING N.89°59'00"E.

REFERENCE DOCUMENTS:

- A.) G.L.O. PLAT OF THE TOWNSITE OF EUREKA, RECORDED IN THE U.S. DEPT. OF THE INTERIOR GOVT. LAND OFFICE IN 1937.
- B.) RECORD OF SURVEY FOR THE EUREKA COUNTY BOARD OF COMMISSIONERS, PREPARED BY R.L.S. 2455 AND APPROVED BY THE COUNTY COMMISSIONERS IN JULY OF 1982.
- C.) AMENDED PLAT OF RUBY HILL ESTATES SUBDIVISION PREPARED BY LUMOS & ASSOCIATES

LEGEND

- SET 5/8" REBAR W/ CAP # 6308
- FOUND AS NOTED
- 384-34-37W ~ 328.52 - ACTUAL BEARING & DISTANCE (N89-41-35E) - RECORDED W/AOC REF.



OWNER'S CERTIFICATE

KNOW ALL MEN BY THESE PRESENTS, THAT EUREKA COUNTY, THE UNDERSIGNED, BEING OWNERS OF A PORTION OF THE SOUTH 1/2 OF THE SOUTHEAST 1/4 OF SECTION 14, T.19 N., R.53 E., M.D.B. & M., DO HEREBY CONSENT TO THE PREPARATION AND FILING OF THIS MAP, THAT THEY DO HEREBY OFFER WITHOUT RESERVATION FOR STREET AND PUBLIC UTILITY PURPOSES, ALL THE AREAS DELINEATED FOR SUCH PURPOSES ON THIS MAP. IN WITNESS WHEREOF, WE HAVE HERETO SET OUR HANDS THE _____ DAY OF _____, 1986.

David A. Phillippi
CHAIRMAN, EUREKA COUNTY COMMISSION

Paul Shangle
ATTEST, EUREKA COUNTY CLERK

SURVEYORS CERTIFICATE

I, LESTER A. PHILIPPI, A REGISTERED LAND SURVEYOR IN THE STATE OF NEVADA, CERTIFY THAT:

- (1.) THIS IS A TRUE AND ACCURATE REPRESENTATION OF THE LANDS SURVEYED UNDER MY SUPERVISION AT THE INSTANCE OF THE EUREKA TOWNSITE.
- (2.) THE LANDS SURVEYED LIE WITHIN SEC. 14, T.19 N., R.53 E., M.D.B. & M., AND THE SURVEY WAS COMPLETED ON _____, 1986.
- (3.) THIS PLAT COMPLIES WITH THE APPLICABLE STATE STATUTES AND ANY LOCAL ORDINANCES.
- (4.) THE MONUMENTS ARE OF THE CHARACTER SHOWN AND OCCUPY THE POSITIONS INDICATED.

Lester A. Phillippi
LESTER A. PHILIPPI, R.L.S. 6308



ENGINEERS CERTIFICATE

I, _____, CERTIFY THAT I HAVE EXAMINED THIS MAP CONSISTING OF ONE (1) SHEET AND THAT ALL PROVISIONS AND ORDINANCES APPLICABLE HAVE BEEN COMPLIED WITH AND THAT I AM SATISFIED THAT THIS MAP IS TECHNICALLY CORRECT AND THAT A PROPER DEPOSIT OR PERFORMANCE BOND HAS BEEN POSTED, GUARANTEEING THE SETTING OF THE MONUMENTS SHOWN ON OR BEFORE _____, 1986.

Paul Shangle 11/17/86
COUNTY ENGINEER DATE

UTILITY APPROVALS

THIS FINAL MAP AND THE EASEMENTS SHOWN ON THIS PLAT HAVE BEEN CHECKED AND APPROVED BY THE UNDERSIGNED.

Bob Lee 11-17-86 *William R. Johnson* 12/3/86
NEVADA BELL DATE MT. WHEELER POWER INC. DATE

APPROVAL EUREKA COUNTY PLANNING COMMISSION

AT A REGULAR MEETING OF THE EUREKA COUNTY PLANNING COMMISSION, STATE OF NEVADA, HELD ON THE _____ DAY OF _____, 1986, THIS MAP WAS APPROVED PURSUANT TO N.R.S. CHAPTER 278.

Roberta Samala
CHAIRMAN, EUREKA COUNTY PLANNING COMMISSION

Paul Shangle
ATTEST, EUREKA COUNTY CLERK

APPROVAL EUREKA COUNTY COMMISSIONER'S

AT A REGULAR MEETING OF THE BOARD OF COUNTY COMMISSIONER'S OF EUREKA COUNTY, STATE OF NEVADA, HELD ON THE _____ DAY OF _____, 1986, THIS MAP WAS APPROVED PURSUANT TO N.R.S. CHAPTER 278.

David A. Phillippi
CHAIRMAN, EUREKA COUNTY COMMISSION

Paul Shangle
ATTEST, EUREKA COUNTY CLERK

RECORDER CERTIFICATE

FILED AT THE REQUEST OF *Board of County Commissioners* ON THE 9th DAY OF *December*, 1986, AT 50 MIN. PAST 1 P. M., IN THE OFFICE RECORDS OF EUREKA COUNTY, NEVADA.

106585

EUREKA COUNTY RECORDER

NOTE:

A 5' PUBLIC UTILITY & DRAINAGE EASEMENT ALONG SIDE & BACK LOT LINES & A 7.5' PUBLIC UTILITY & DRAINAGE EASEMENT ALONG FRONT LOT LINES ARE CREATED BY THIS PARCEL MAP.

CONDITIONS:

- 1. THAT ALL PARCEL LINES AND EASEMENTS REMAIN AS SHOWN TO THE PLANNING COMMISSION UNTIL THE MAP IS RECORDED.
- 2. THAT ALL REQUIREMENTS OF GOVERNMENTAL AGENCIES WITH PERMIT AUTHORITY BE MET.

PARCEL MAP FOR EUREKA COUNTY BOARD OF COMMISSIONERS

LOCATED WITHIN THE SOUTH 1/2 OF THE SOUTHEAST 1/4 OF SECTION 14, T. 19 N., R. 53 E., M.D.B. & M., EUREKA TOWNSITE, EUREKA COUNTY, NEVADA

LUMOS & ASSOCIATES, INC.
625 FAIRVIEW DRIVE #102
CARSON CITY, NEVADA 89701
(702) 883-7077

JOB #035-06-820 SHEET 1 OF 1