

CURVE DATA					
CURVE	Δ	RADIUS	LENGTH	TANGENT	CHORD
C1	20-35-09	540.00	194.02	98.01	192.97
C2	34-50-08	260.00	108.08	81.57	155.65
C3	36-20-19	260.00	169.90	85.33	162.15
C4	90-00-00	20.00	31.42	20.00	28.28
C5	37-40-04	250.00	169.36	85.27	161.41
C6	18-46-22	250.00	81.91	41.33	81.55
C7	04-32-58	1062.59	81.37	42.21	89.35
C8	04-23-31	1079.69	82.76	41.40	82.74
C9	15-06-12	776.50	209.69	102.94	209.10
C10	17-58-06	743.50	233.17	117.55	232.21
C11	40-12-31	340.00	238.60	124.45	233.74
C12	02-28-42	250.00	10.81	5.40	10.81
C13	15-37-07	250.00	68.16	34.29	67.94
C14	6-11-08	340.00	36.71	18.37	36.69

BASIS OF BEARING:

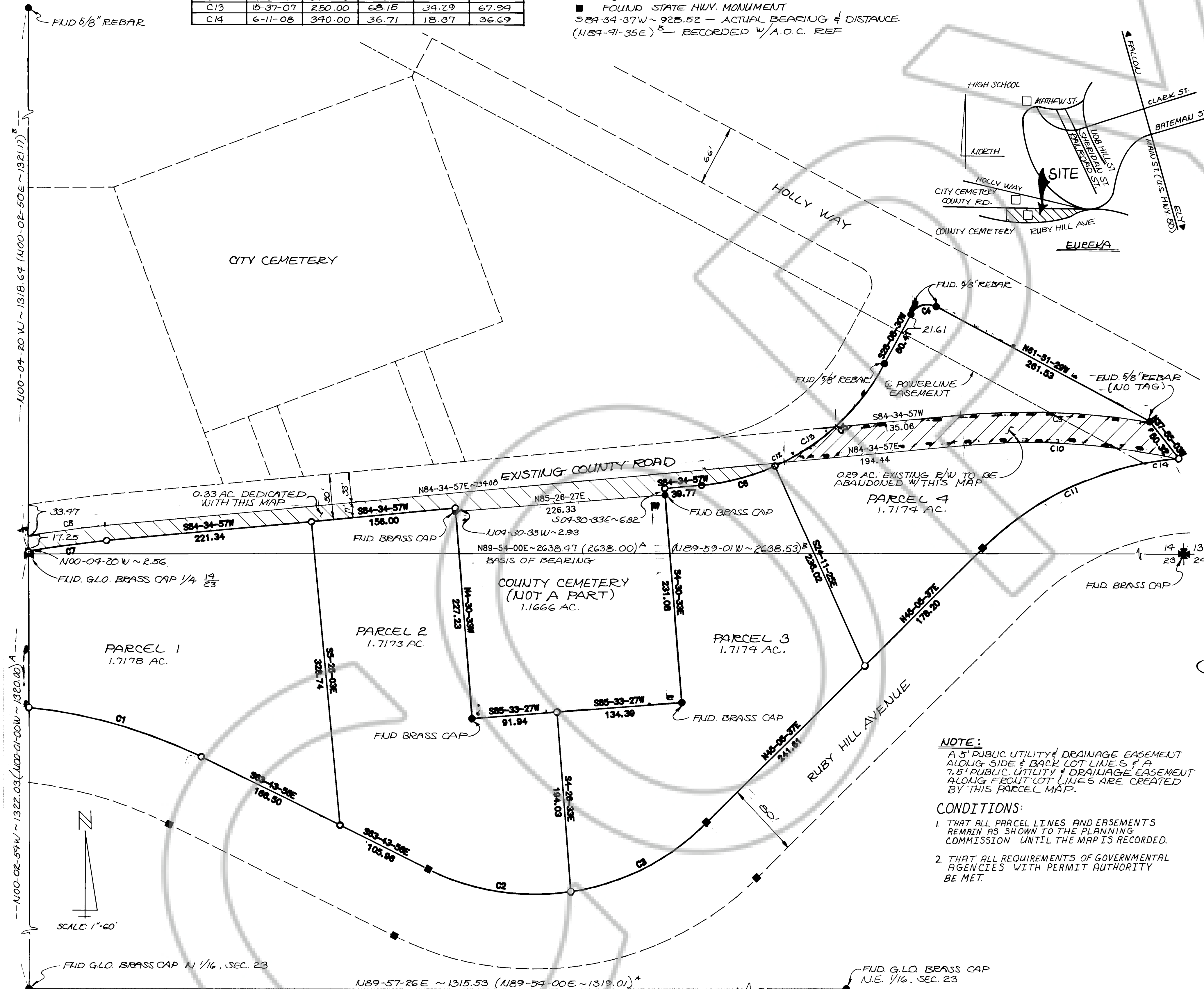
THE BASIS OF BEARING FOR THIS SURVEY IS THE NORTH LINE OF THE 1/4 OF SECTION 23, T.19 N., R.53 E., M.D.B. & M., AS SHOWN ON THE PLAT OF THE TOWNSITE OF EUREKA COUNTY FILED IN THE OFFICE OF THE U.S. DEPT. OF THE INTERIOR, G.L.O. THE BEARING OF SAID LINE BEING N83°54'00"E.

REFERENCE DOCUMENTS:

- G.L.O. PLAT OF THE TOWNSITE OF EUREKA, RECORDED IN THE U.S. DEPT. OF THE INTERIOR GOVT. OFFICE IN 1937.
- RECORD OF SURVEY FOR THE EUREKA COUNTY BOARD OF COMMISSIONERS, PREPARED BY R.L.S. 2455, AND APPROVED BY THE COUNTY COMMISSIONERS IN JULY OF 1982.
- AMENDED PLAT OF RUBY HILL ESTATES SUBDIVISION PREPARED BY LUMOS & ASSOCIATES.
- PARCEL MAP 1, FOR EUREKA TOWNSITE INDUSTRIAL AREA BY LUMOS & ASSOCIATES.

LEGEND:

- SET 5/8" REBAR W/CAP# 6308
 - FOUND AS NOTED
 - FOUND STATE HWY. MONUMENT
- S84-34-37W ~ 925.52 - ACTUAL BEARING & DISTANCE
(N84-41-35E) - RECORDED W/A.O.C. REF



OWNER'S CERTIFICATE

KNOW ALL MEN BY THESE PRESENTS, THAT EUREKA TOWNSITE, THE UNDERSIGNED, BEING OWNERS OF A PORTION OF THE SE 1/4 OF SECTION 14, AND THE NE 1/4 OF SECTION 23, T.19 N., R.53 E., M.D.B. & M., DO HEREBY CONSENT TO THE PREPARATION AND FILING OF THIS MAP THAT THEY DO HEREBY OFFER WITHOUT RESERVATION FOR STREET AND PUBLIC UTILITY PURPOSES, ALL THE AREAS DELINEATED FOR SUCH PURPOSES ON THIS MAP. IN WITNESS WHEREOF, WE HAVE HEREIN SET OUR HANDS THE DAY OF

David Ostrom
CHAIRMAN, EUREKA COUNTY COMMISSION

Paul Shangle
ATTEST, EUREKA COUNTY CLERK

SURVEYORS CERTIFICATE

I, LESTER A. PHILIPPI, A REGISTERED LAND SURVEYOR IN THE STATE OF NEVADA, CERTIFY THAT:

- THIS IS A TRUE AND ACCURATE REPRESENTATION OF THE LANDS SURVEYED UNDER MY SUPERVISION AT THE INSTANCE OF THE EUREKA TOWNSITE.
- THE LANDS SURVEYED LIE WITHIN SEC. 14 & 23, T.19 N., R.53 E., M.D.B. & M., AND THE SURVEY WAS COMPLETED ON
- THIS PLAT COMPLIES WITH THE APPLICABLE STATE STATUTES AND ANY LOCAL ORDINANCES.
- THE MONUMENTS ARE OF THE CHARACTER SHOWN AND OCCUPY THE POSITIONS INDICATED.

Lester A. Philippi
LESTER A. PHILIPPI, R.L.S. 6308



ENGINEERS CERTIFICATE

I, _____, CERTIFY THAT I HAVE EXAMINED THIS MAP CONSISTING OF ONE (1) SHEET AND THAT ALL PROVISIONS AND APPLICABLE LAWS HAVE BEEN COMPLIED WITH AND THAT I AM SATISFIED THAT THIS MAP IS TECHNICALLY CORRECT, A PROPER DEPOSIT OR PERFORMANCE BOND HAS BEEN GUARANTEED GUARANTEEING THE SETTING OF THE MONUMENTS SHOWN ON OR BEFORE

Paul Shangle
COUNTY ENGINEER DATE 11/10/86

UTILITY APPROVALS

THIS FINAL MAP AND THE EASEMENTS SHOWN ON THIS PLAT HAVE BEEN CHECKED AND APPROVED BY THE UNDERSIGNED.

Paul Shangle 11/19/86 *Robert D. Nangle* 11/13/86
NEVADA BELL DATE MT. WHEELER POWER INC. DATE

APPROVAL EUREKA COUNTY PLANNING COMMISSION

AT A REGULAR MEETING OF THE BOARD OF COUNTY COMMISSIONERS OF EUREKA COUNTY, STATE OF NEVADA, HELD ON THE 14th DAY OF November, 1986, THIS MAP WAS APPROVED PURSUANT TO N.R.S. CHAPTER 278.

Robert D. Nangle
CHAIRMAN, EUREKA COUNTY PLANNING COMMISSION

Paul Shangle
ATTEST, EUREKA COUNTY CLERK

APPROVAL EUREKA COUNTY COMMISSIONER'S

AT A REGULAR MEETING OF THE BOARD OF COUNTY COMMISSIONERS OF EUREKA COUNTY, STATE OF NEVADA, HELD ON THE 14th DAY OF November, 1986, THIS MAP WAS APPROVED PURSUANT TO N.R.S. CHAPTER 278.

David Ostrom
CHAIRMAN, EUREKA COUNTY COMMISSION

Paul Shangle
ATTEST, EUREKA COUNTY CLERK

RECORDER CERTIFICATE

FILED AT THE REQUEST OF Board of County Commissioners
ON THE 9th DAY OF November, 1986, AT 5:00 MIN. PAST 1 P. M.,
IN THE OFFICIAL RECORDS OF EUREKA COUNTY, NEVADA.

106546
EUREKA COUNTY RECORDER

PARCEL MAP FOR EUREKA TOWNSITE INDUSTRIAL AREA

LOCATED WITHIN THE SO. 1/2 OF THE SE 1/4 SEC. 14 AND THE NO. 1/2 OF THE NE 1/4 SEC. 23, T.19 N., R.53 E., M.D.B. & M., EUREKA TOWNSITE, EUREKA COUNTY, NEVADA

LUMOS & ASSOCIATES, INC.
625 FAIRVIEW DRIVE #102
CARSON CITY, NEVADA 89701
(702) 883-7077

JOB #035-06-820

SHEET 1 OF 1