

R. 50 E.

T. 17 N.

29

27

32

34

SULLI 61

SULLI 71

N 45° E

S 45° E

N 45° W

S 45° W

FILED AT THE REQUEST OF *Rocky Mountain Surveyors, Inc.*
On *Feb 25* 1987 CL *122* MINS. 1221 A.M.
EUREKA COUNTY, NEVADA M.N. RECORDS OF
File No. **107502** Fee \$*200.00*

MAP

OF
LODE MINING CLAIMS
WITHIN
TOWNSHIPS 16 & 17 NORTH, RANGE 50 EAST
MOUNT DIABLO MERIDIAN
EUREKA COUNTY, NEVADA
FOR
HECLA MINING COMPANY
6500 MINERAL DRIVE
COEUR D'ALENE, IDAHO 83814

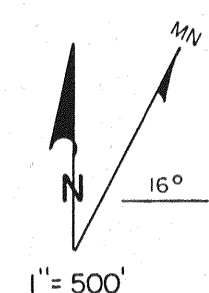
SULLI CLAIMS 1-80
LOCATED - FEBRUARY 10 & 11, 1987

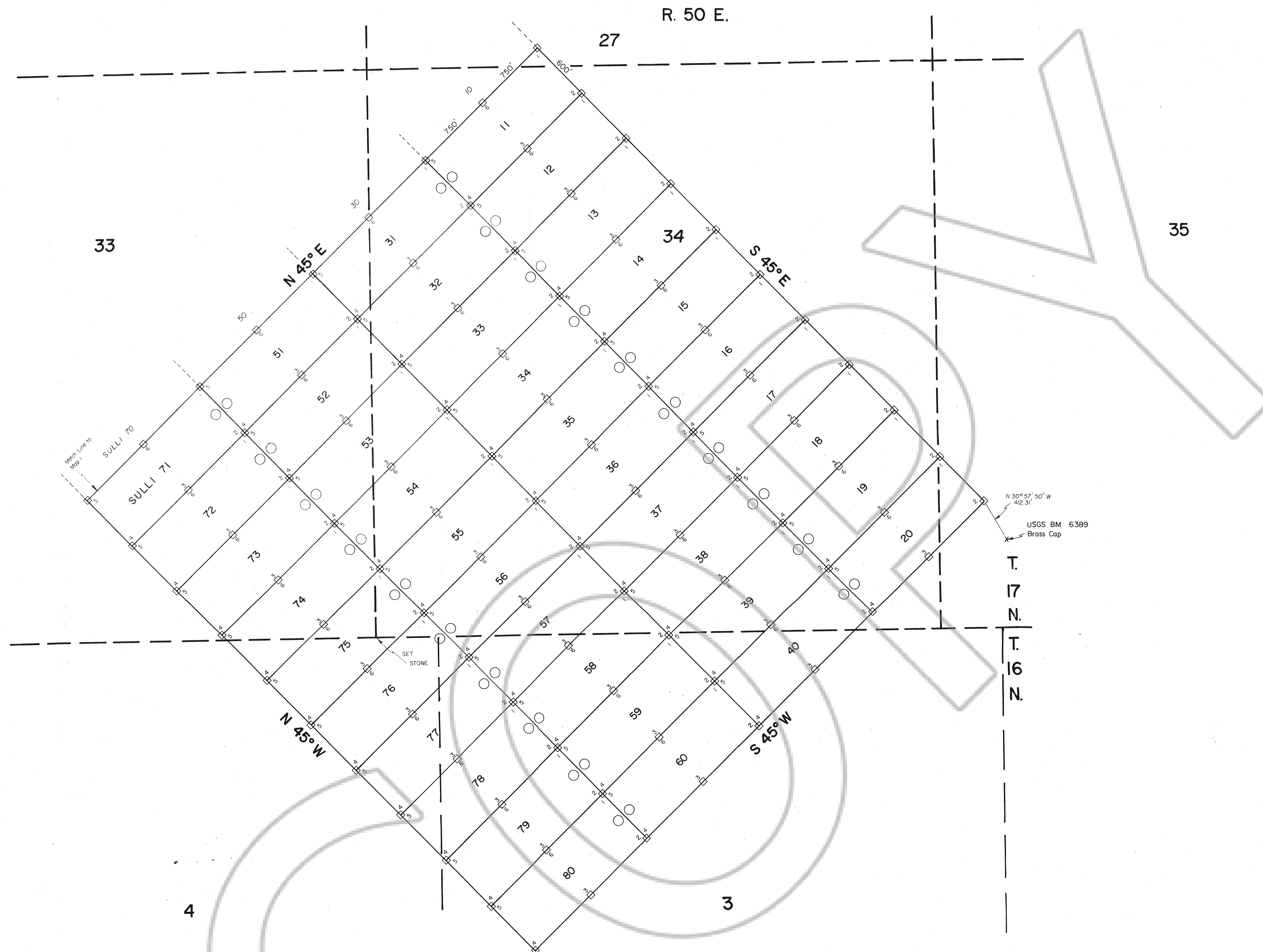
○ = LOCATION MONUMENT

ALL CLAIMS ARE 600'x1500' UNLESS OTHERWISE NOTED.

ALL LOCATION MONUMENTS ARE OFFSET 10' FROM END CENTERS UNLESS OTHERWISE NOTED

ALL LOCATION MONUMENTS, SIDE CENTERS AND CORNERS ARE MONUMENTED WITH 3" DIA. BY 5' IN LENGTH PVC PIPE.





FILED AT THE REQUEST OF *Rocky Mountain Surveyors, Inc.*
 on *Feb 25 1987* at *Las Vegas* Nevada
 M.N. REGALATI, Recorder
 Fee \$ *1200.00*

MAP
 OF
 LOPE MINING CLAIMS
 WITHIN
 TOWNSHIPS 16 & 17 NORTH, RANGE 50 EAST
 MOUNT DIABLO MERIDIAN
 EUREKA COUNTY, NEVADA
 FOR
 HECLA MINING COMPANY
 6500 MINERAL DRIVE
 COEUR D'ALENE, IDAHO 83814

SULLI CLAIMS 1-80
 LOCATED FEBRUARY 10 & 11, 1987

○ = LOCATION MONUMENT

ALL CLAIMS ARE 600'x1500' UNLESS OTHERWISE NOTED.

ALL LOCATION MONUMENTS ARE OFFSET 10' FROM END CENTERS UNLESS OTHERWISE NOTED.

ALL LOCATION MONUMENTS, SIDE CENTERS AND CORNERS ARE MONUMENTED WITH 3" DIA. BY 5' IN LENGTH PVC PIPE.

