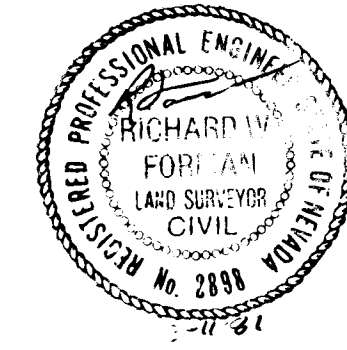




SURVEYOR'S CERTIFICATE

I, Richard W. Forman, a Registered Land Surveyor in the State of Nevada, do hereby certify that this map is a true and accurate representation of the lands shown hereon prepared from record data as noted, at the request of Wayne and Marybeth Robinson, and that this map complies with applicable statutes and local ordinances.

Richard W. Forman
Richard W. Forman, R.L.S. No. 2898



SURVEY WAIVER

The requirement of a survey, for the basis of this map, is hereby waived by the Board of the Eureka County Commission.

LeRoy Stegaway 3-20-87
Chairman, Eureka County Commissioners Date

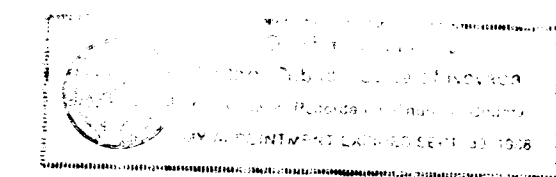
OWNER'S CERTIFICATE

We, Wayne and Marybeth Robinson, do hereby certify that we are the owners of the land shown on this parcel map and have retained the above Registered Land Surveyor to prepare this parcel map for recordation.

Wayne Robinson *Marybeth Robinson* 3-14-87
Wayne Robinson Marybeth Robinson Date

Subscribed and sworn to before me this 14 day of March 1987.

Jerry Wallace
Notary Public and for Churchill County, Nevada.



PLANNING COMMISSION APPROVAL

At a regular meeting of the Eureka County Regional Planning Commission, State of Nevada, held on the 12 day of March 1987, the above map was duly approved.

David L. Shannon
Chairman

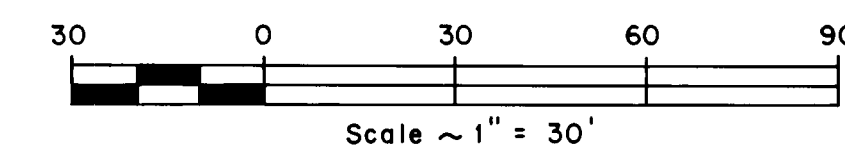
COUNTY COMMISSION APPROVAL

At a regular meeting of the Eureka County Commission, Eureka County State of Nevada, held on this 21 day of March 1987, the above map was approved.

LeRoy Stegaway
Chairman, Eureka County Commissioners

Paul Shangle
Clerk, Eureka County

FILED IN THE OFFICE OF *Wayne Robinson*
on *Mar 23* 1987 at *11:45* AM, DISTRICT CLERK
EUREKA COUNTY, NEVADA
107802



PARCEL MAP
EUREKA COUNTY, NEVADA
SHOWING LAND TO BE DIVIDED
IN GENERAL WASHINGTON MILLSITE
SURVEY 128 B
EUREKA TOWNSITE
BY WAYNE & MARYBETH ROBINSON

PREPARED BY
BOUNTY & FORMAN, INC.
ELY, NEVADA
MARCH, 1987