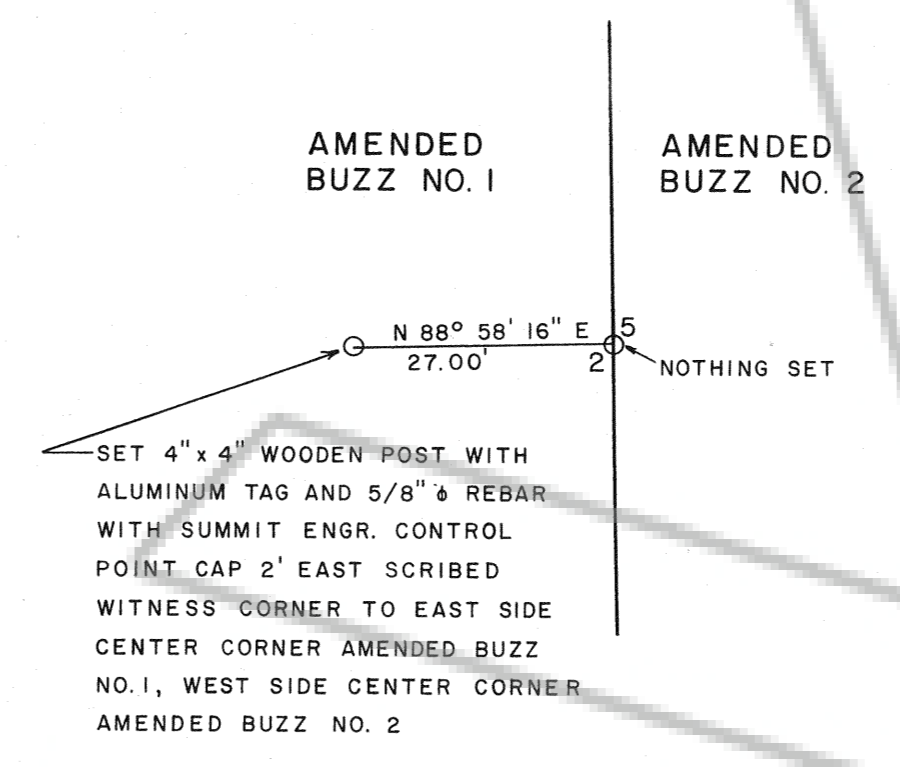
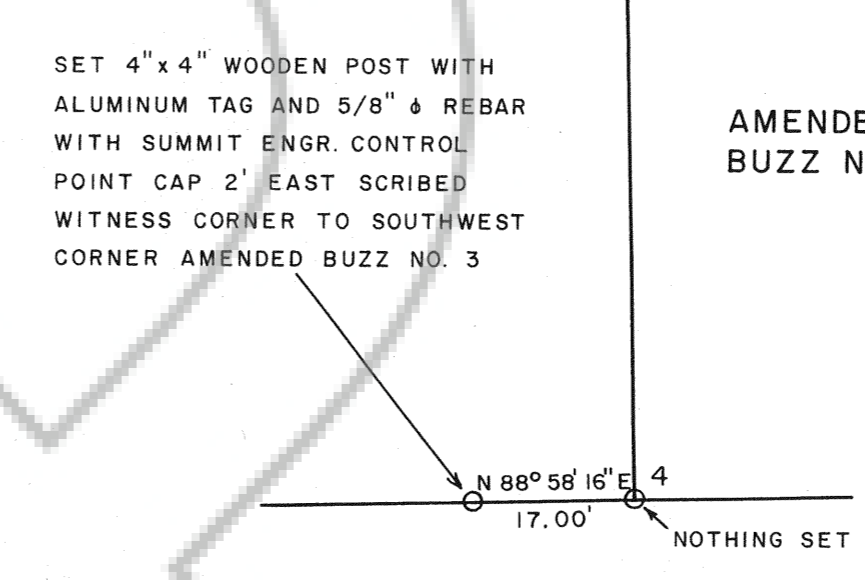


DETAIL "A"
1" = 20'



DETAIL "B"
1" = 20'



LEGEND

- SET 4" x 4" WOODEN POST WITH ALUMINUM TAG AND 5/8" & REBAR WITH SUMMIT ENGINEERING CONTROL POINT CAP 2' EAST
- SET 4" x 4" WOODEN POST WITH NOTICE AND 5/8" & REBAR WITH SUMMIT ENGINEERING CONTROL POINT CAP 2' EAST
- ◆ FOUND B.L.M. BRASS CAP AT SECTION CORNER
- ◆ FOUND B.L.M. BRASS CAP AT 1/4 SECTION CORNER

BASIS OF BEARINGS

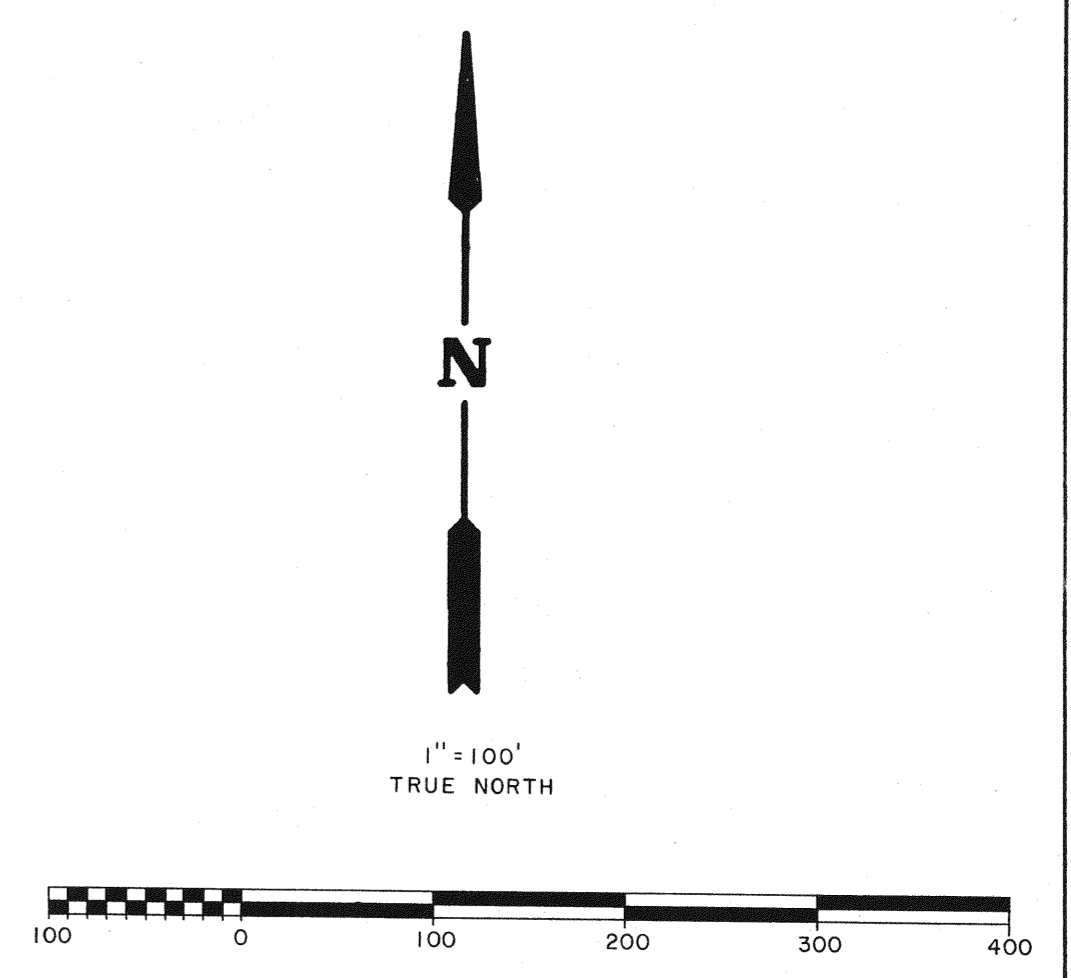
THE LINE BETWEEN THE SE CORNER AND THE E 1/4 CORNER OF SECTION 19, T36N, R50E, M.D.B.&M. TAKEN AS N 02° 05' 53" W

DATE AMENDED
APRIL 2, 1987
DATE REMONUMENTATION COMPLETED
APRIL 2, 1987

FILING DATA

FILE NO. 108074
FILED AT THE REQUEST OF:
Barrick Gold Strike Mines
DATE May 14th 1987
TIME 10:19 AM

M.M. Roberts
EUREKA COUNTY RECORDER



MAP OF AMENDED BUZZ LODE MINING CLAIMS
LOCATED BY WESTERN STATES MINERALS - JVI
P.O. BOX 29 ELKO, NV 89801
PROPRIETOR OF THE GOLD STRIKE MINE
LOCATED MAY 11, 1983
AMENDED APRIL 2, 1987
LOCATED IN A PORTION OF
SECTION 19 T36N R50E M.D.B.&M.
LYNN MINING DISTRICT EUREKA COUNTY NEVADA

SUMMIT ENGINEERING CORPORATION
248 WINTER STREET, SUITE 111, RENO, NEVADA 89503
472 FIFTH STREET, ELKO, NEVADA 89801

SHEET	1 OF 1
DATE	4/87
JOB NO	1016