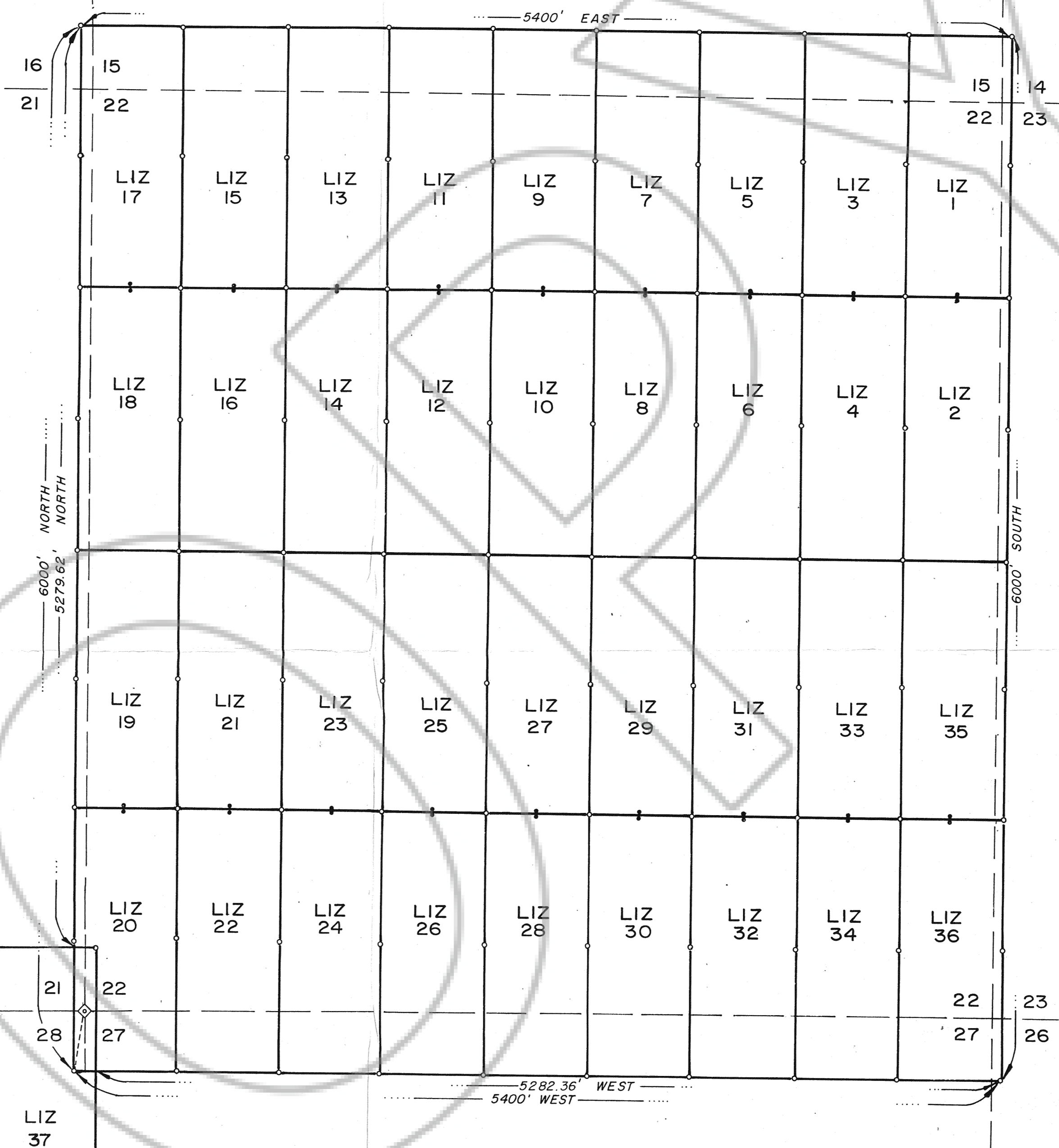


T. 33 N. R. 51 E.

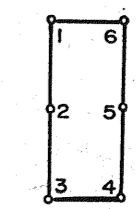


LIZ 37 through 108 are shown on SHEET 2

**SECTION TIE:**  
 The southwest corner of LIZ 20 lies S 9°27'44" W of the southwest corner of Section 22, T. 33 N., R. 51 E., M.D.B.M. at a distance of 364.96'.

**SYMBOLS**

- ◊ Found section corner
- Location monument: all monuments are located 20' from the end centers.
- Claim corner or side center: corners are numbered counter-clockwise from the NW corner as shown.



**NOTES**

All claims are 600' x 1500'.  
 All monuments, corners and side centers are 4" dia. by 4' tall PVC pipe.  
 LIZ 1-36 located May 13, 1987.  
 LIZ 37-72 located May 14, 1987.  
 LIZ 73-108 located May 26, 1987.  
 Claims were located by Noranda Exploration, Inc., P.O. Box 7176, Reno, Nevada 89510.  
 The LIZ 1-108 claim block covers Sec. 22, 28 and 32 with portions extending into the following quarter sections: the SW 1/4 of Sec. 14, the SW & SE 1/4 of Sec. 15, the SW 1/4 of Sec. 16, the SE & NE 1/4's of Sec. 21, 29 and 31, the NW & SW 1/4's of Sec. 23 and the NW 1/4 of Sec. 26 and 27, all in T. 33 N., R. 51 E., M.D.B.M.

108487

**NORANDA EXPLORATION, INC.**

**LIZ 1 - 108**  
GROUP OF LODE MINING CLAIMS

Situated primarily in  
**SECTIONS 22, 28 & 32;**  
T. 33 N., R. 51 E.

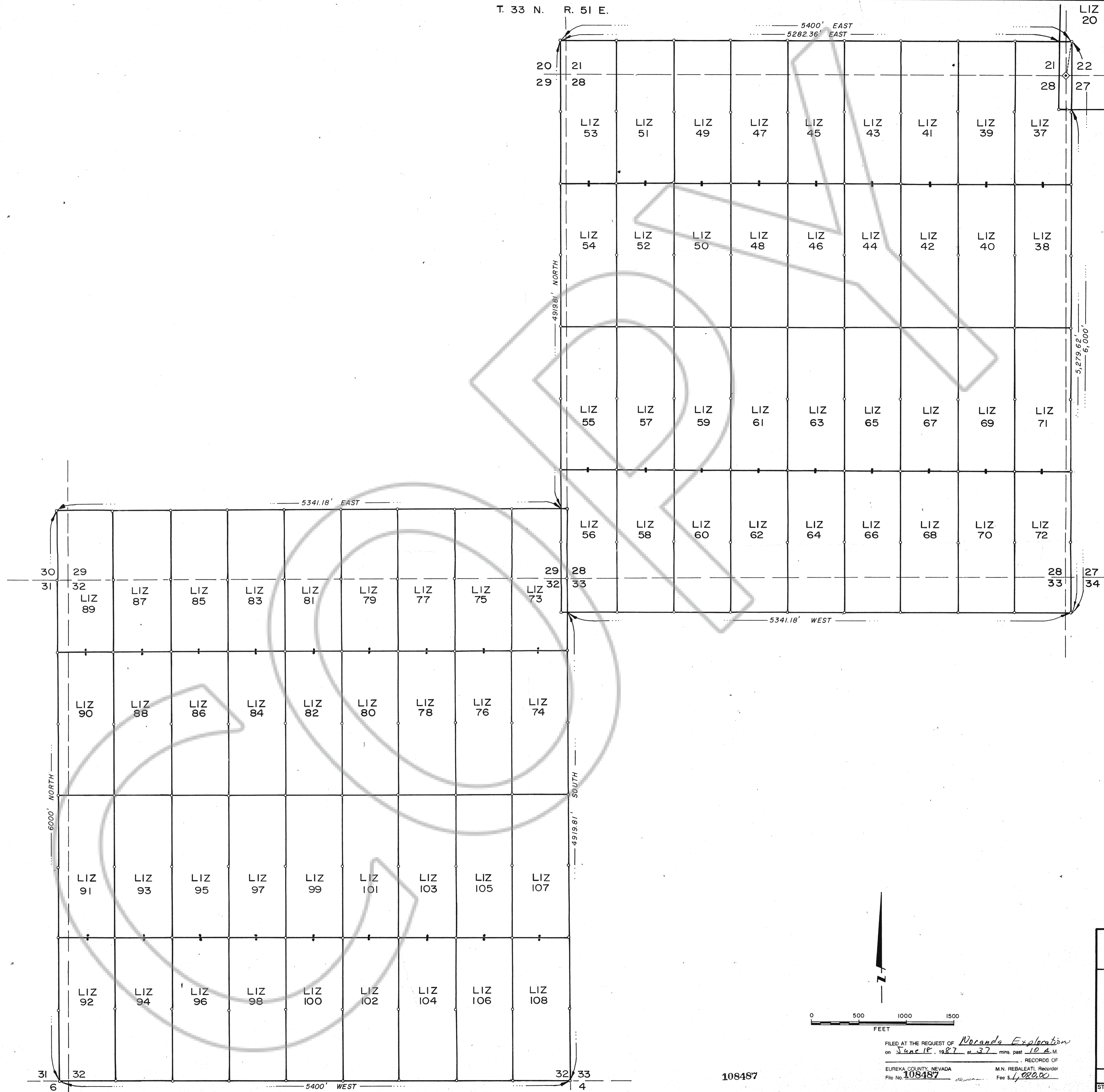
EUREKA COUNTY, NEVADA

**SHEET 1 of 2**



FILED AT THE REQUEST OF *Noranda Exploration*  
 on June 18, 1987 at 37 mins. past 10 A.M.  
 RECORD OF  
 EUREKA COUNTY, NEVADA M.N. REDALEATI, Recorder  
 File No. 108487 Fee \$ 540.00

T. 33 N. R. 51 E.



LIZ 1 through 36 are shown on SHEET 1

**SECTION TIE:**  
 The northeast corner of LIZ 37 lies N 9°27'44" E of the northeast corner of Sec. 28, T. 33 N., R. 51 E., MDBM, at a distance of 364.96.

**NOTE:**  
 See SHEET 1 for explanation of symbols and complete notes.

108487

FILED AT THE REQUEST OF *Noranda Exploration*  
 on *June 18, 1987* at *3:37* mins past *10 A.M.*  
 RECORDS OF  
 EUREKA COUNTY, NEVADA M.N. REBALEATI, Recorder  
 File No. *108487* Fee *\$1,000.00*

**NORANDA EXPLORATION, INC.**

**LIZ 1 - 108**  
 GROUP OF LODE MINING CLAIMS

Situated primarily in  
 SECTIONS 22, 28 & 32;  
 T. 33 N., R. 51 E.

EUREKA COUNTY, NEVADA

**SHEET 2 of 2**

STAKED BY *K. BROGGOTTI* SCALE 1" = 500' DWN BY *skt* DATE 6/87