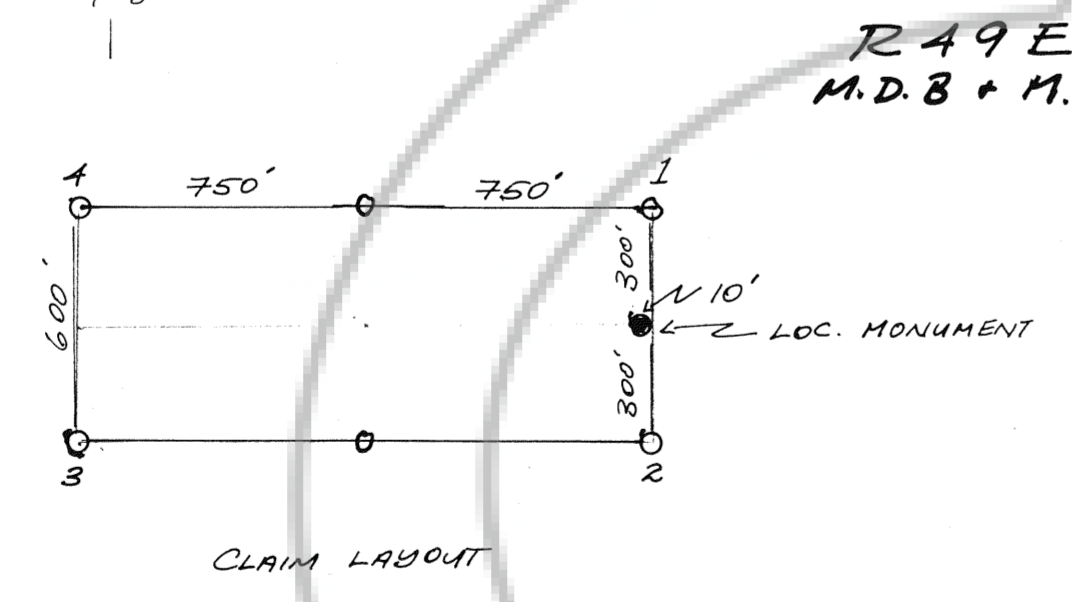
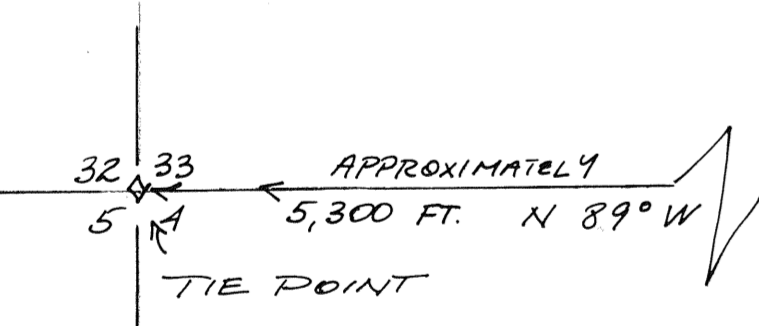


SCALE: 1" = 500'
 MAGNETIC DECLINATION
 17.5° EAST.



LEGEND

ALL CLAIMS ARE ORIENTED E-W
 CLAIMS 19, 21, 23, 25 ARE 600' X 1130'
 CLAIM 27 IS 100' X 1130'
 ALL OTHER CLAIMS ARE 600' X 1500'
 ROD # 1 → 16 LOCATED MAY 12 TH. 1987
 ROD # 17 → 32 LOCATED MAY 13 TH. 1987
 CLAIMS ARE MONUMENTED BY 4" PVC POSTS
 AT CORNERS AND SIDE CENTERS WITH THE
 EXCEPTION OF LOC. MONUMENTS FOR ROD
 15 + 16 WHICH ARE 3" PVC POSTS

MAP OF LOBE MINING CLAIMS ROD # 1 → 32
 SEC. 34 T 36 N R 19 E M.D. 8 + M. EUREKA CO. NEV.
 OWNED BY: KENNECOTT EXPLORATIONS (AUSTRALIA) LTD.
 P.O. BOX 11248
 SALT LAKE CITY, UT. 84147

FILED AS THE REQUEST OF Kennecott Explorations, Ltd.
 ON June 24 1987 AT 6 mins. past 2p. M.
 TURES COUNTY, NEVADA
 109157
 M.N. RECORDS, RECORDS
 Fee \$ 480.00

P.R.F. 5.87