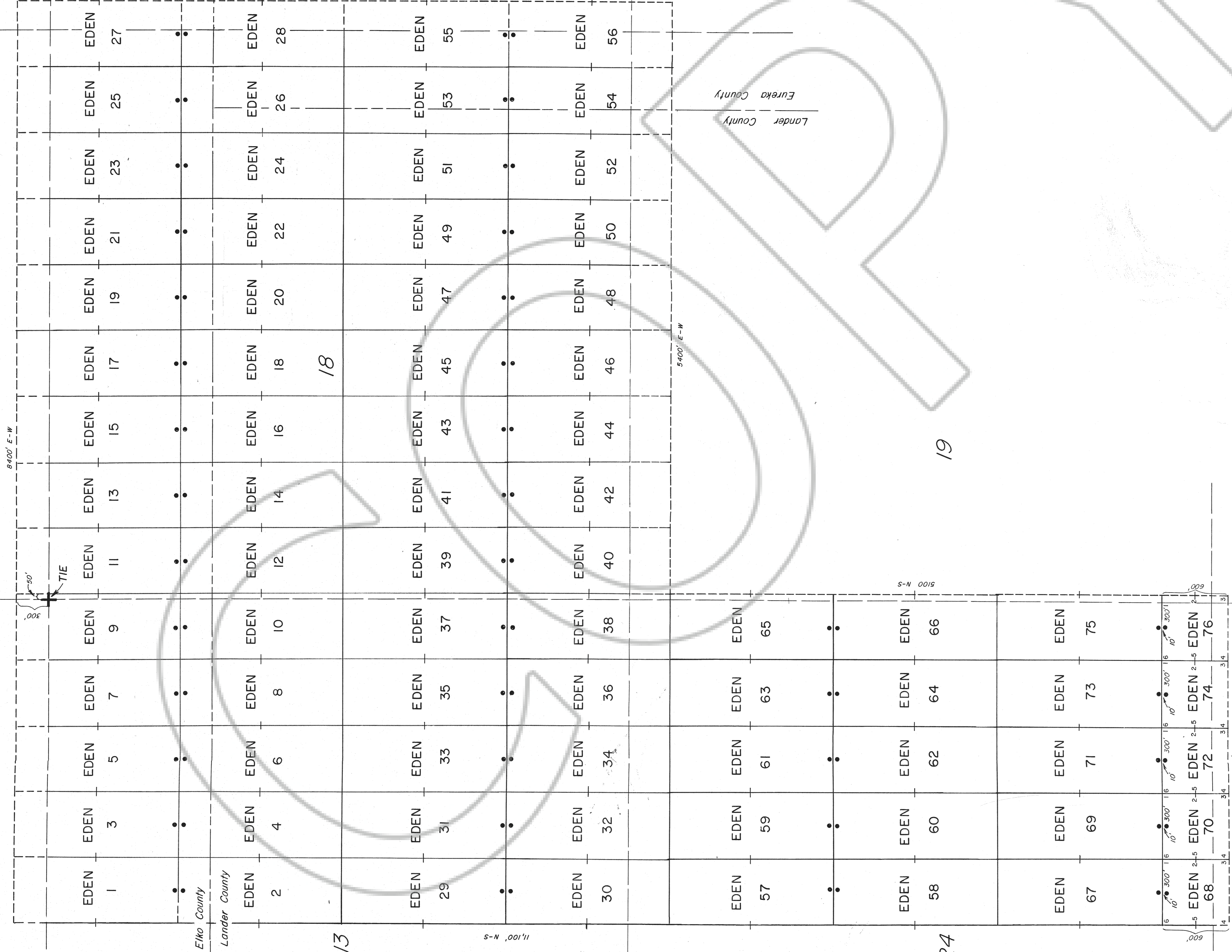


R47E R48E

12

7

8



Elko County
Lander County

Elko County
Eureka County

T36N

13

18

17

S-N 001'11

S-N 001'11

S-N 001'11

S-N 001'11
E-W 300'

LOCATOR
Santa Fe Pacific Mining, Inc.
250 S. Rock Blvd., suite 100
Reno, NV 89502

LOCATION DATE
April 23, 24, 26, 1987

STAKING PERFORMED BY
Azimuth Inc
29 Tucker Lane
Yerington, NV 89447
(702) 463-4050

NOTES
All posts are 3" diameter white PVC pipe

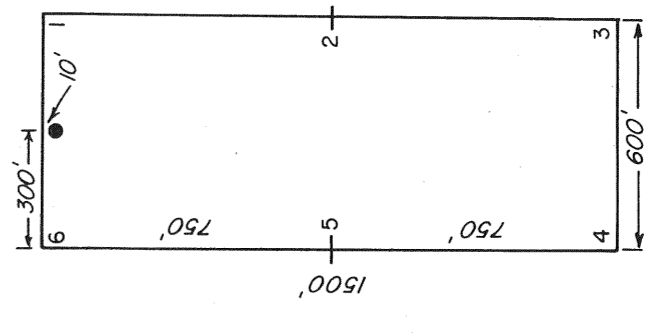
BASIS OF CONTROL

Bearing: Azimuth set from U.S.G.S. VABM Antelope 247°05'56" to U.S.G.S. VABM Izehood
Distance: From NW corner Section 18, T36N, R48E, 300' N and 50' E to NE EDEN 9.

TIES TO SECTION CORNERS

From SE Section Corner 24, T36N, R47E, 136' S and 69' E to SE EDEN 76.
From NE Section Corner 18, T36N, R48E, N42°E 327' to NE EDEN 27.

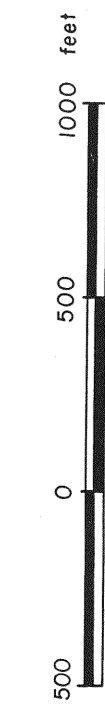
TYPICAL CLAIMS



EXPLANATION

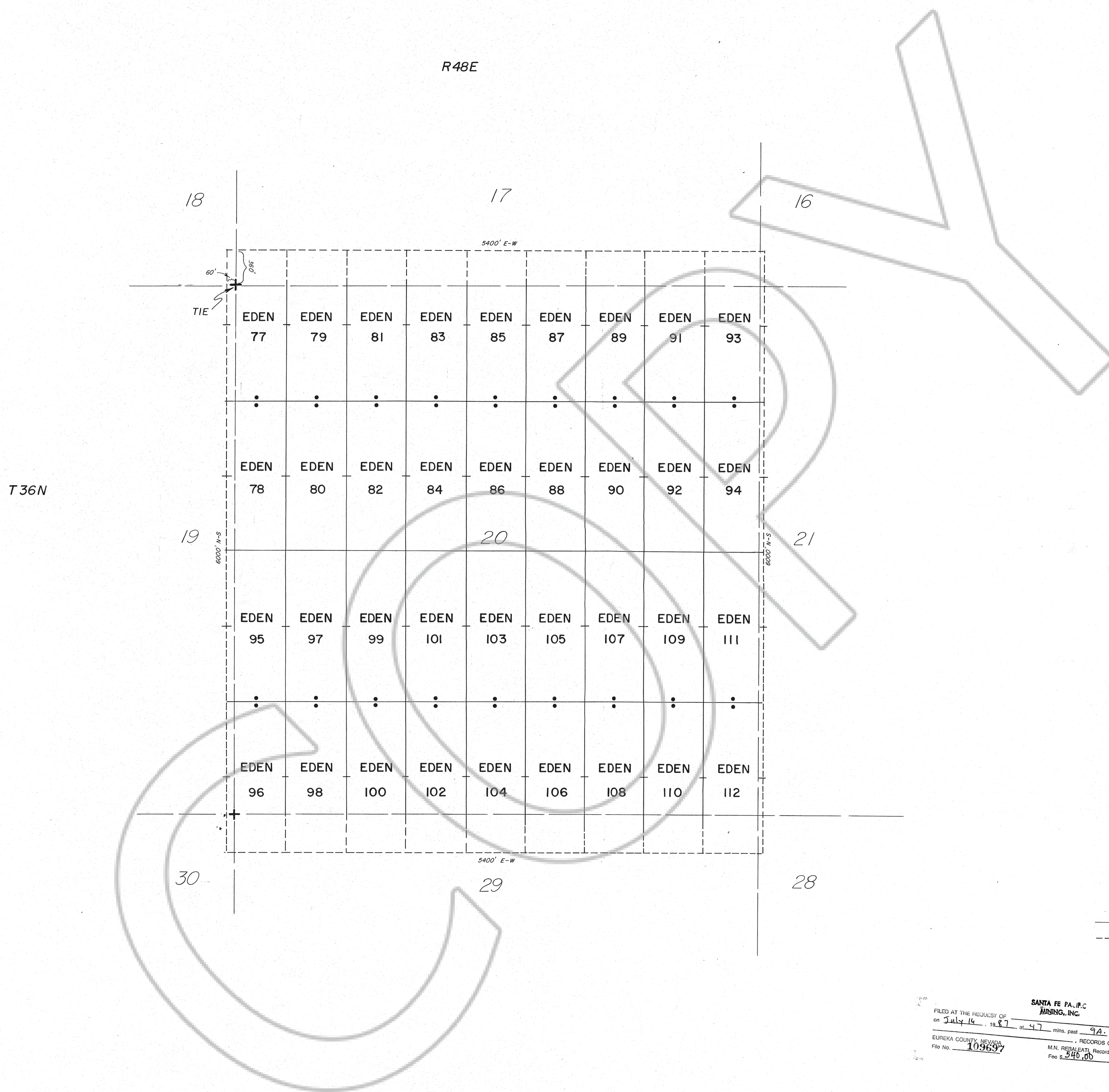
- Location monument
- + Found section corner
- Estimated section lines
- Claim lines dashed when lying in pre emptied ground

109697



EDEN LODGE MINING CLAIMS (1-76)
Section 13, T36N, R47E
Section 18, T36N, R48E
Section 24, T36N, R47E
Elko, Eureka & Lander Counties, Nevada
April 1987

FILED AT THE REQUEST OF
SANTA FE PACIFIC MINING, INC.
on July 16, 1987 at 4:47 min. past 9A. M.
RECORDS OF
M.N. REGALANTI, Recorder
ELKO COUNTY, NEVADA
File No. 109697



LOCATOR
 Santa Fe Pacific Mining, Inc.
 250 S. Rock Blvd., suite 100
 Reno, NV 89502

LOCATION DATE
 April 27 & 28, 1987

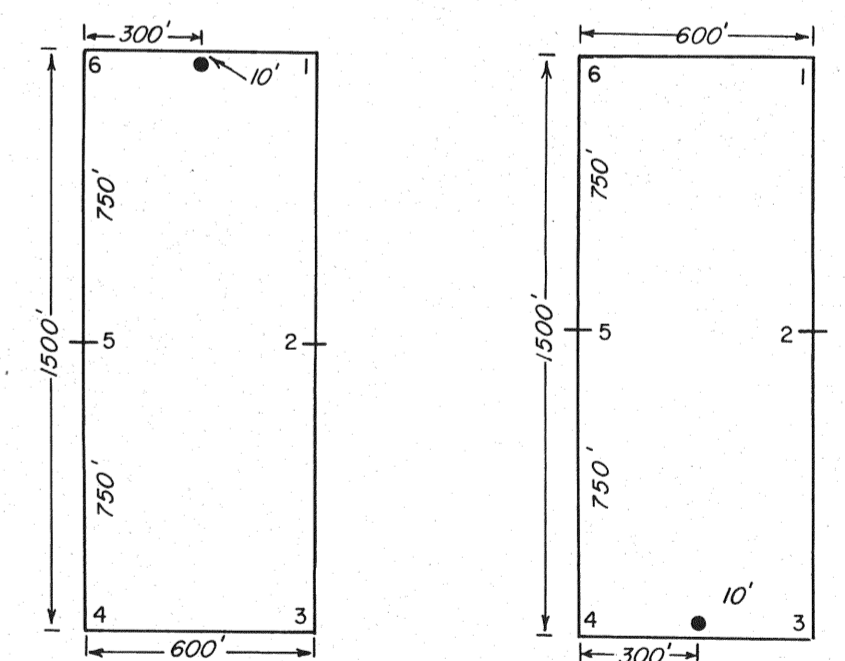
STAKING PERFORMED BY
 Azimuth Inc
 29 Tucker Lane
 Yerington, NV 89447
 (702) 463-4050

NOTES
 All posts are 3" diameter white PVC pipe

BASIS OF CONTROL
 Bearing: Azimuth set from U.S.G.S. VABM Antelope 247°05'56"
 to U.S.G.S. VABM Izenhood
 Distance: From the NW corner of Section 20, T36N, R48E, 360'
 N and 60' W to the NW corner of EDEN 77

TIES TO SECTION CORNERS
 From the SW corner Section 20, 380' S and 77' W to SW corner
 EDEN 96.

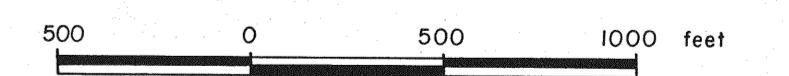
TYPICAL CLAIMS



EXPLANATION

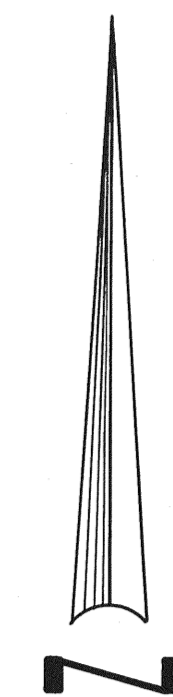
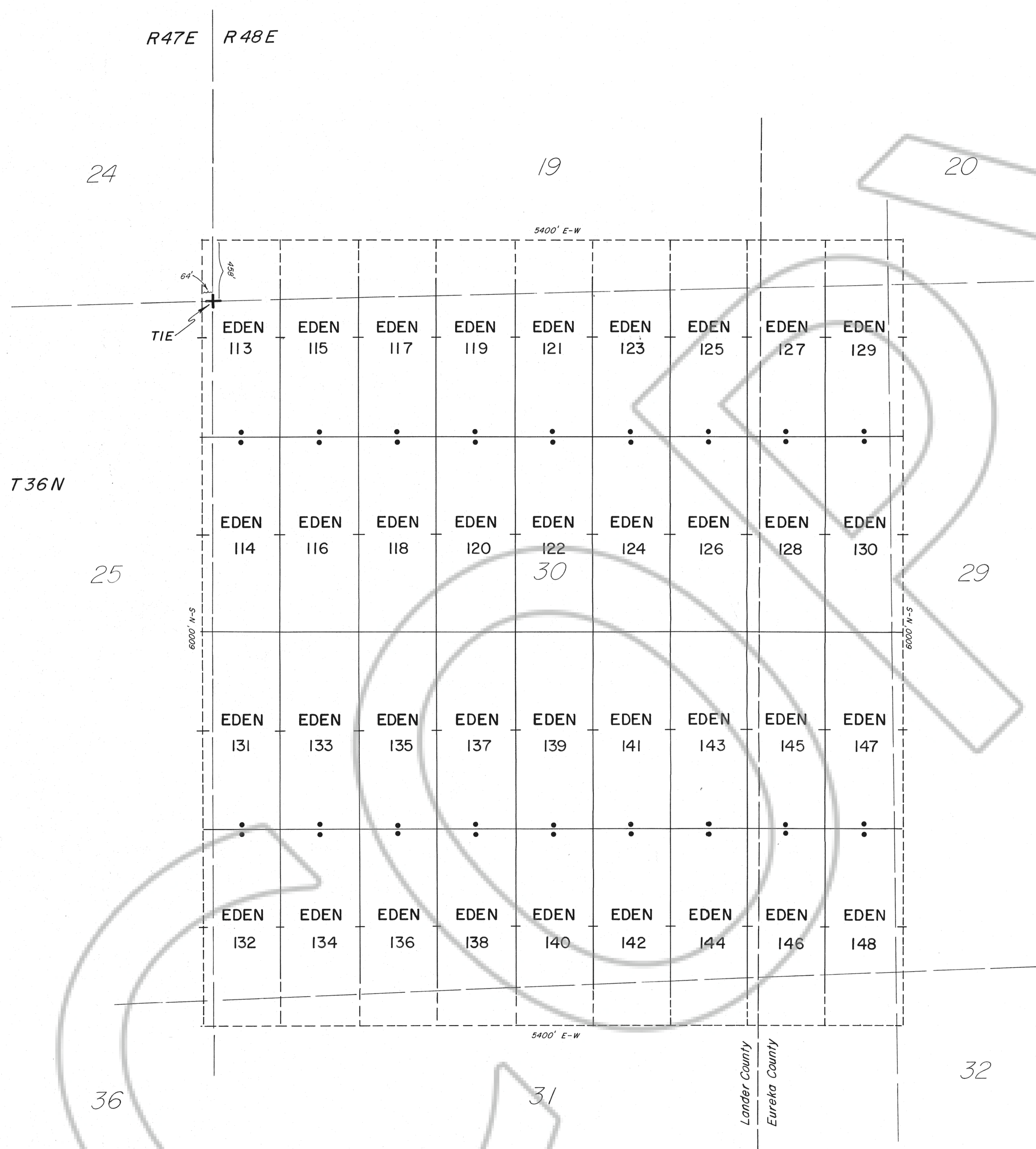
- Location monument
- + Found section corner
- Estimated section lines
- - - Claim lines dashed when lying in pre emptied ground

109697



FILED AT THE REQUEST OF
 on July 14, 1987 at 4:47 mins. past 9 A.M.
 EUREKA COUNTY, NEVADA, RECORDS OF
 File No. 109697 M.N. REBALENTI, Recorder
 Fee \$ 546.00

EDEN LODGE MINING CLAIMS
 (77-112)
 Section 20, T36N, R48E
 Eureka County, Nevada
 April 1987



LOCATOR
 Santa Fe Pacific Mining, Inc.
 250 S. Rock Blvd., suite 100
 Reno, NV 89502

LOCATION DATE
 April 28, 1987

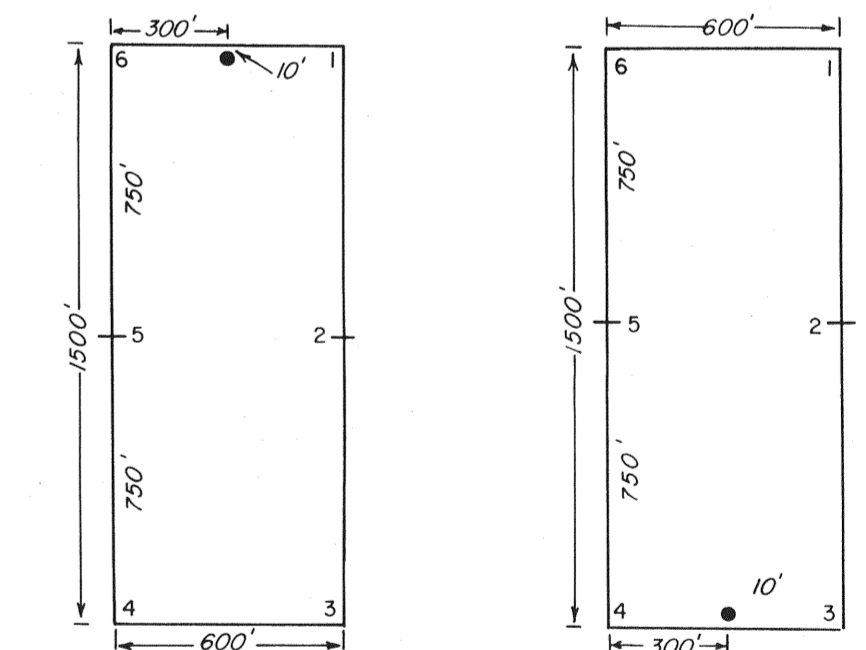
STAKING PERFORMED BY
 Azimuth Inc
 29 Tucker Lane
 Yerington, NV 89447
 (702) 463-4050

NOTES
 All posts are 3" diameter white PVC pipe

BASIS OF CONTROL
 Bearing: Azimuth set from U.S.G.S. VABM Antelope 247°05'56" to U.S.G.S. VABM Izenhood
 Distance: From the NW Corner Section 30, T36N, R48E, 458' N and 64' W to NW Corner EDEN 113.

TIES TO SECTION CORNERS
 From NW corner Section 30, T36N, R48E, 458' N and 64' W to the NW EDEN 113.
 From SW corner Section 30, T36N, R48E, 211' S and 72' W to SW EDEN 132.
 From SE corner Section 30, T36N, R48E, 504' S and 85' E to SE EDEN 148

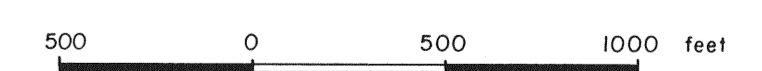
TYPICAL CLAIMS



EXPLANATION

- Location monument
- + Found section corner
- Estimated section lines
- - - - - Claim lines dashed when lying in pre emptied ground

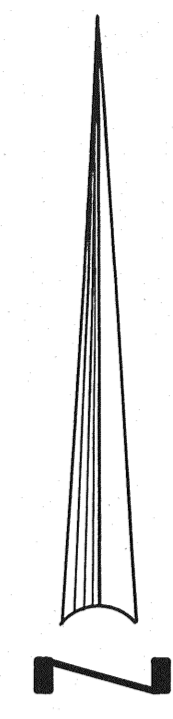
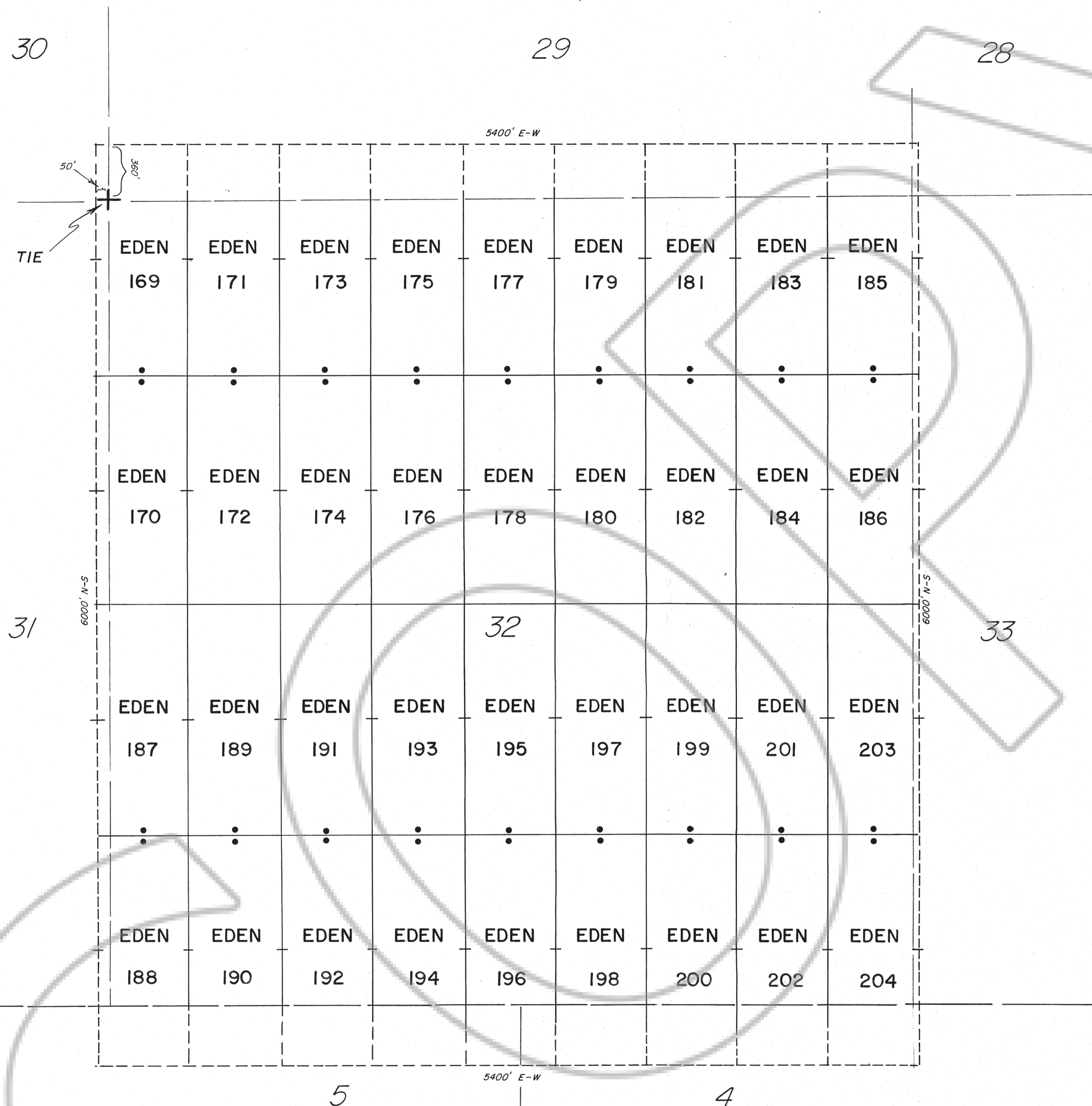
109697



FILED AT THE REQUEST OF **SANTA FE PACIFIC MINING, INC.**
 on July 16, 1987 at 47 mins. past 9 A. M.
 EUREKA COUNTY, NEVADA, RECORDS OF
 File No. 109697 M.N. REBALEATI, Recorder
 Fee \$ 120.00

EDEN LODGE MINING CLAIMS
 (113-148)
 Section 30, T36N, R48E
 Lander & Eureka Counties, Nevada
 April 1987

R48E



LOCATOR
 Santa Fe Pacific Mining, Inc.
 250 S. Rock Blvd., suite 100
 Reno, NV 89502

LOCATION DATE
 April 29 & May 2, 1987

STAKING PERFORMED BY
 Azimuth Inc
 29 Tucker Lane
 Yerington, NV 89447
 (702) 463-4050

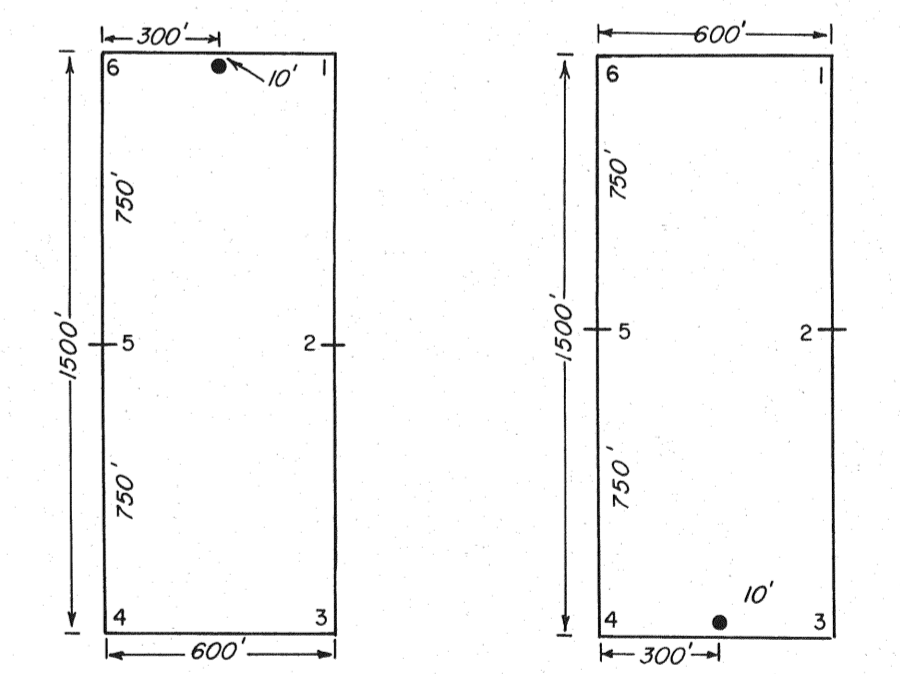
NOTES
 All posts are 3" diameter white PVC pipe

BASIS OF CONTROL
 Bearing: Azimuth set from U.S.G.S. VABM Antelope 247°05'56"
 to U.S.G.S. VABM Izenhood
 Distance: From NW corner Section 32, T36N, R48E 360' N
 and 50' W to NW EDEN 169.

T36N

T35N

TYPICAL CLAIMS



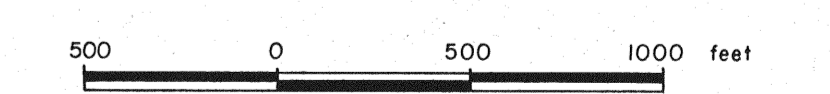
EXPLANATION

- Location monument
- + Found section corner
- Estimated section lines
- - - Claim lines dashed when lying in pre emptied ground

FILED AT THE REQUEST OF
 on July 16, 1987, at 47 mins. past 9 A. M.
 EUREKA COUNTY, NEVADA RECORDS OF
 M.N. REBELEATI, Recorder
 File No. 109697 Fee \$ 540.00

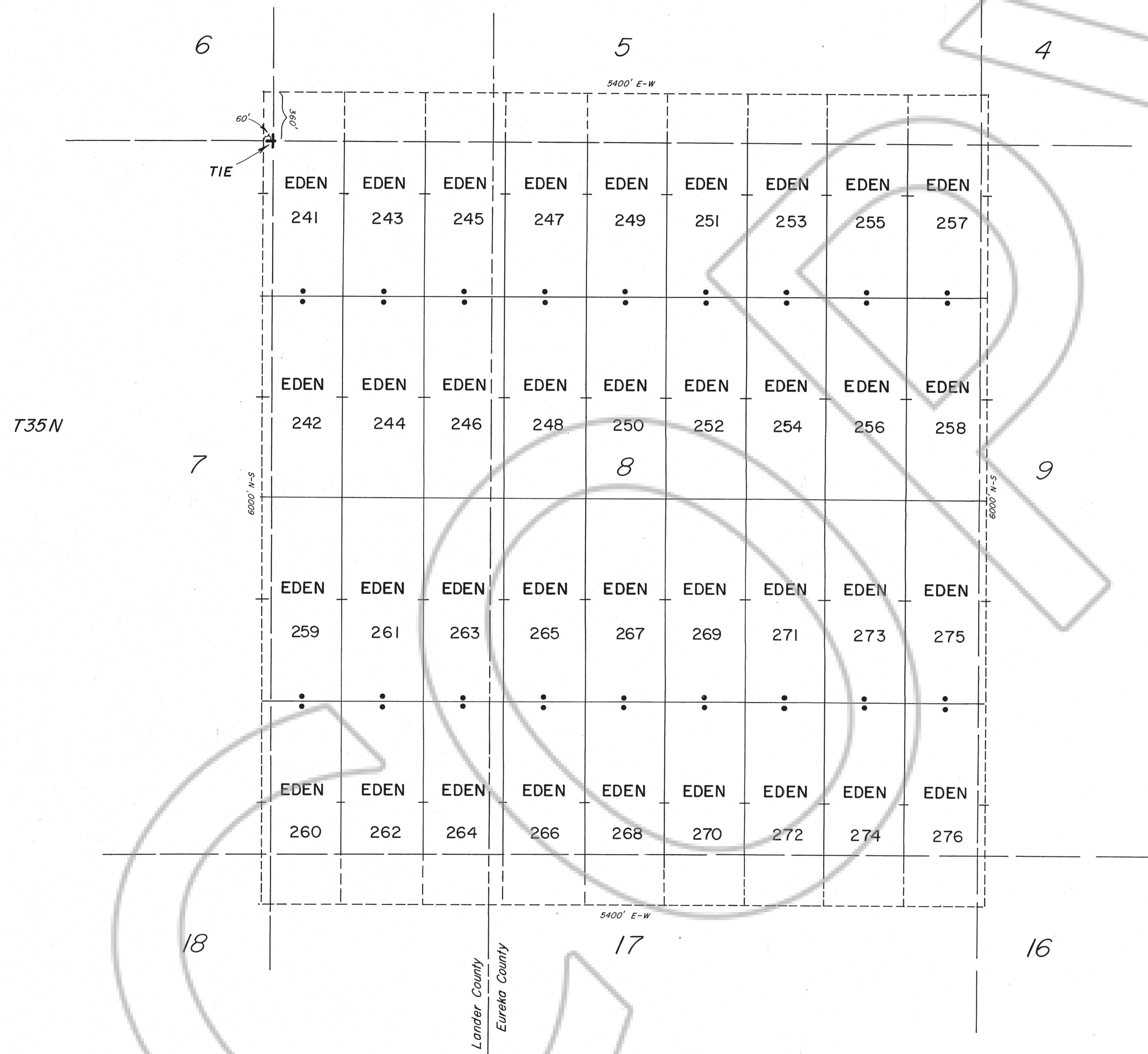
SANTA FE PACIFIC
 MINING, INC.

109697



EDEN LODE MINING CLAIMS
 (169-204)
 Section 32, T36 N, R48E
 Eureka County, Nevada
 April & May, 1987

R 48 E



LOCATOR

Santa Fe Pacific Mining, Inc.
250 S. Rock Blvd., suite 100
Reno, NV 89502

LOCATION DATE

May 2 & 3, 1987

STAKING PERFORMED BY

Azimuth Inc
29 Tucker Lane
Yerington, NV 89447
(702) 463-4050

NOTES

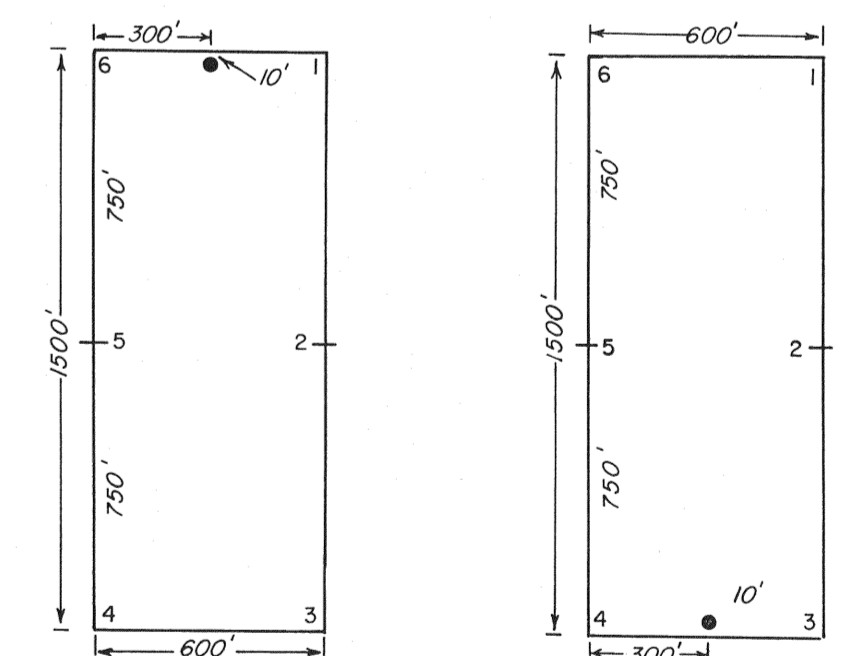
All posts are 3" diameter white PVC pipe

BASIS OF CONTROL

Bearing: Azimuth set from U.S.G.S. VABM Antelope 247°05'56" to U.S.G.S. VABM Izenhood

Distance: From NW corner Section 8, T35N, R48E 360' N and 60' W to NW EDEN 241

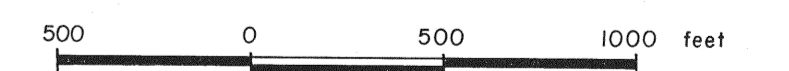
TYPICAL CLAIMS



EXPLANATION

- Location monument
- + Found section corner
- Estimated section lines
- - - Claim lines dashed when lying in pre emptied ground

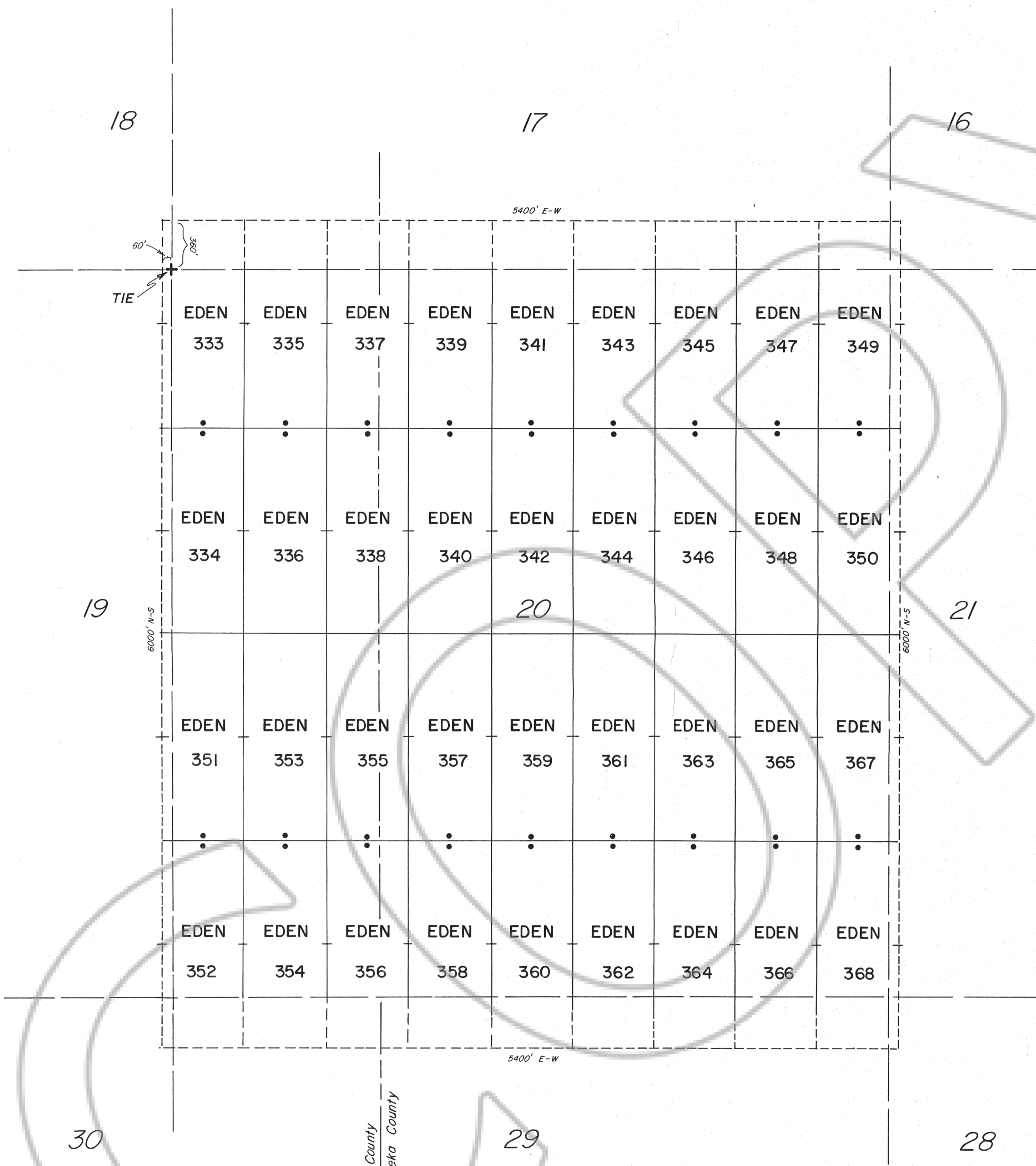
109697



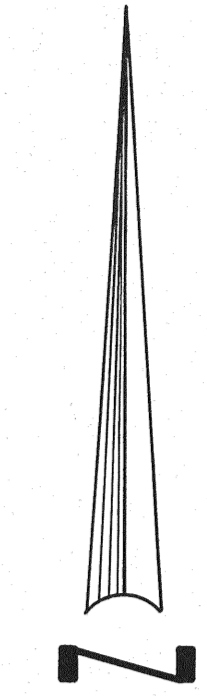
FILED AT THE REQUEST OF **SANTA FE PACIFIC MINING, INC.**
 on July 16, 1987 at 11 mins. past 9 A.M.
 EUREKA COUNTY, NEVADA M.N. REBEKAH L. RECORDS OF
 File No. 109697 Fee \$ 180.00

EDEN LODGE MINING CLAIMS
 (241-276)
 Section 8, T35N, R48E
 Lander & Eureka Counties, Nevada
 May 1987

R 48 E



T35N



LOCATOR
 Santa Fe Pacific Mining, Inc.
 250 S. Rock Blvd., suite 100
 Reno, NV 89502

LOCATION DATE
 May 5 & 6, 1987

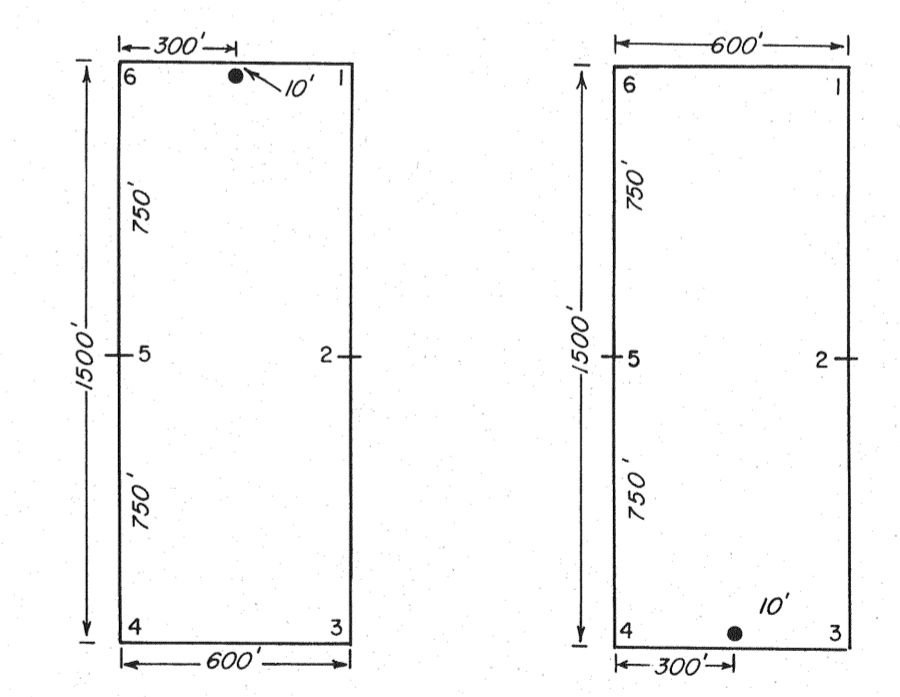
STAKING PERFORMED BY
 Azimuth Inc
 29 Tucker Lane
 Yerington, NV 89447
 (702) 463-4050

NOTES
 All posts are 3" diameter white PVC pipe

BASIS OF CONTROL
 Bearing: Azimuth set from U.S.G.S. VABM Antelope 247°05'56" to U.S.G.S. VABM Izenhood
 Distance: From NW corner Section 20, T35N, R48N, 360' N and 60' W to NW EDEN 333.

TIES TO SECTION CORNERS
 From SW corner Section 20, T35N, R48E, 361' S and 86' W to SW EDEN 352.

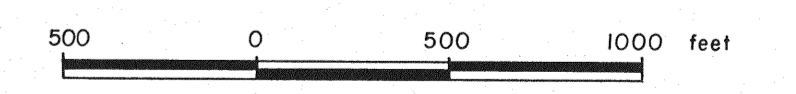
TYPICAL CLAIMS



EXPLANATION

- Location monument
- ⊕ Found section corner
- Estimated section lines
- - - Claim lines dashed when lying in pre-empted ground

109697



SANTA FE PACIFIC MINING, INC.
 FILED AT THE REQUEST OF _____
 on July 14, 1987, at 47 mins, past 9A.M.
 EUREKA COUNTY, NEVADA M.N. REBALEATI, Recorder
 File No. 109697 Fee \$ 420.00

EDEN LODE MINING CLAIMS (333-368)
 Section 20, T35N, R48E
 Lander & Eureka Counties, Nevada
 May 1987