

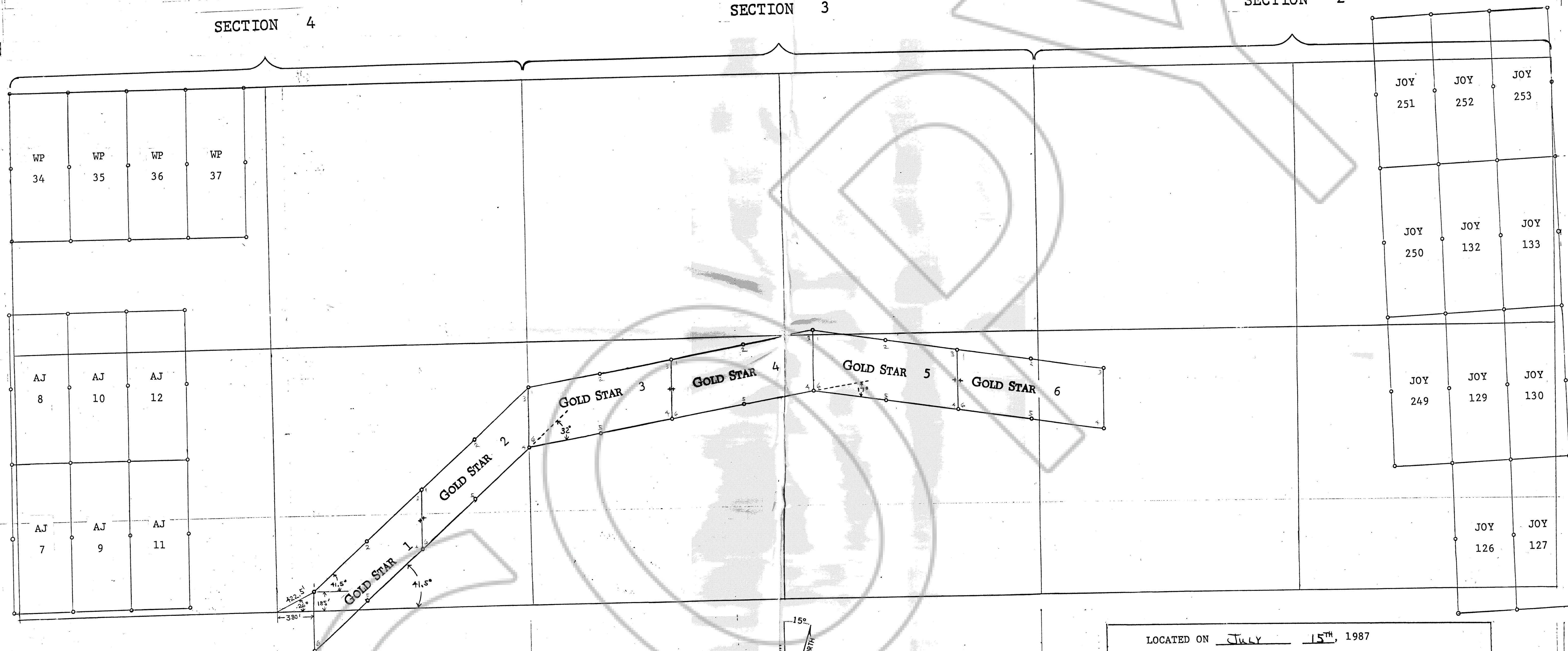
# MAP OF THE "GOLD STAR" GROUP OF LODE CLAIMS

TOWNSHIP 23 NORTH RANGE 50 EAST OF THE MOUNT DIABLO MERIDIAN, NEVADA

SECTION 4

SECTION 3

SECTION 2



ALL CLAIMS ARE 600' X 1500' PARALLELOGRAMS WITH SIDE CENTERS SET 750' FROM THE END LINES. EACH CLAIM HAS SEVEN POSTS. SOME POSTS DOUBLE FOR TWO CLAIMS. ALL POSTS ARE MADE OF DURABLE PLASTIC PIPE AT LEAST THREE INCHES IN DIAMETER. ALL PIPES ARE AT LEAST FOUR FEET LONG SET ONE FOOT INTO THE GROUND OR, IF IMPRACTICAL, PLACED IN A MOUND OF EARTH OR ROCKS. ONE POST FOR THE DISCOVERY MONUMENT(+), ONE FOR EACH OF THE FOUR CORNERS, AND ONE AT THE CENTER OF EACH SIDELINE PURSUANT TO NRS 517.030.

ALL DISCOVERY MONUMENTS(+) ARE LOCATED TEN FEET FROM THE CENTER OF THE SIDE LINES.

ALL END LINES ARE PARALLEL TO ENJOY EXTRALATERAL RIGHTS.

THE LOCATION OF THE SECTION LINES AND QUARTER SECTION LINES ON THIS MAP ARE ACCURATE --- THE PERCENTAGE OF STANDARD MEAN DEVIATION FROM THE U.S.G.S.'S ROBERTS CREEK MOUNTAIN QUADRANGLE IS ONLY 1.2%.

TRUE NORTH  
MAGNETIC NORTH  
APPROXIMATE MEAN  
DECLINATION, 1986

SCALE 1" = 500'

FILED AT THE REQUEST OF Chadwick D'Lara  
on July 16, 1987 at 49 mins. past 32 M.  
EUREKA COUNTY, NEVADA  
FILE NO. 109718  
M.N. REBALSA, Recorder  
Fee \$ 100.00

LOCATED ON July 15<sup>th</sup>, 1987

IN AN UNKNOWN MINING DISTRICT BY:

CHADWICK D'LARA

625 W. ARROYO STREET  
RENO, NV 89509

OR 524 - 26th AV.  
SAN FRANCISCO, CA 94121

(702) 323-7117

(415) 752-2519

LAND SURVEYORS:

BOUNDY & FORMAN INC.

298 E. 11th  
ELY, NV 89301

ASK FOR:  
RICHARD FORMAN

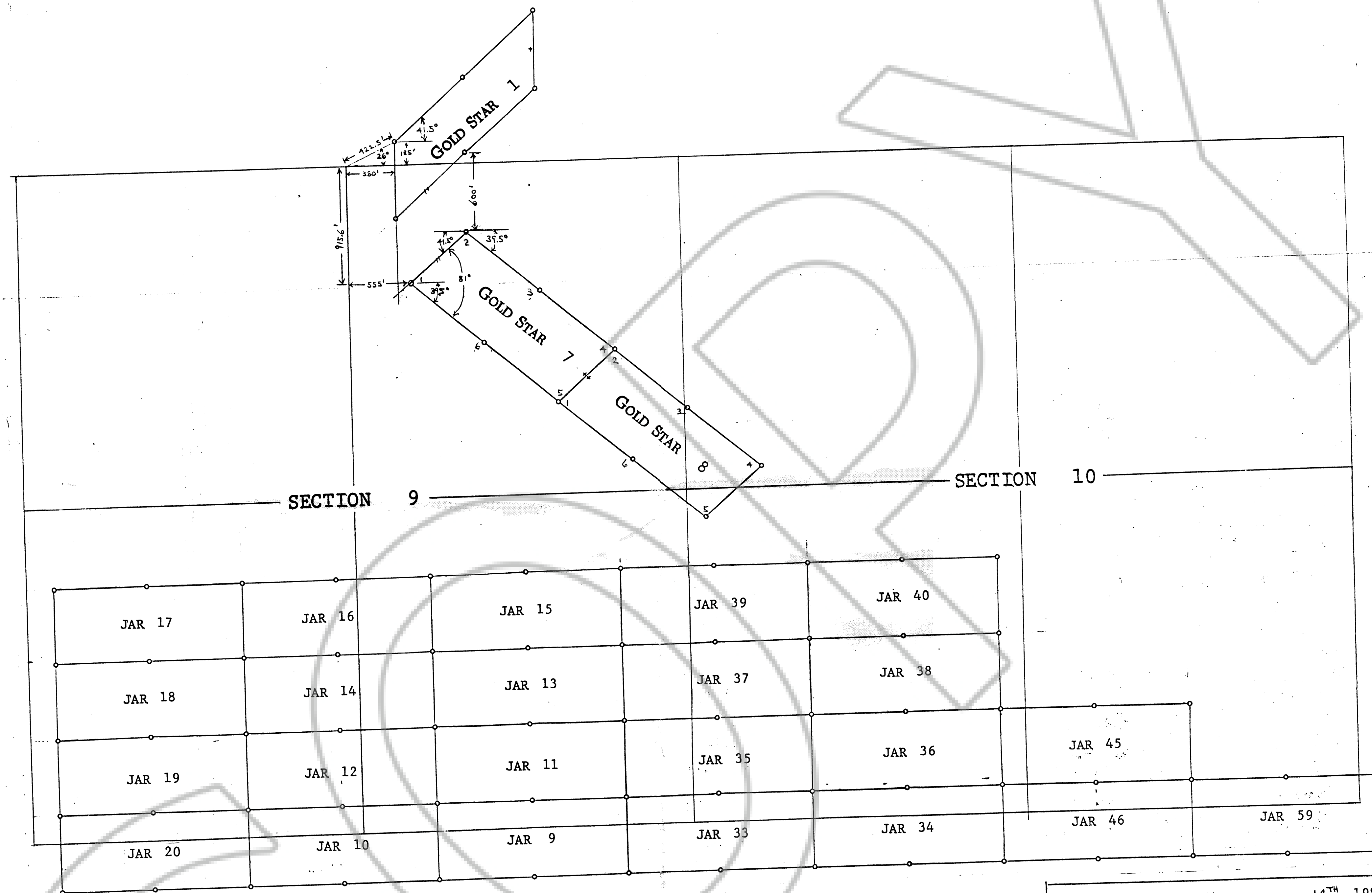
(702) 289-8835

109718



# MAP OF THE "GOLD STAR" GROUP OF LODE CLAIMS

TOWNSHIP 23 NORTH RANGE 50 EAST OF THE MOUNT DIABLO MERIDIAN, NEVADA



ALL CLAIMS ARE 600' X 1500' PARALLELOGRAMS WITH SIDE CENTERS SET 750' FROM THE END LINES. EACH CLAIM HAS SEVEN POSTS. SOME POSTS DOUBLE FOR TWO CLAIMS. ALL POSTS ARE MADE OF DURABLE PLASTIC PIPE AT LEAST THREE INCHES IN DIAMETER. ALL PIPES ARE AT LEAST FOUR FEET LONG SET ONE FOOT INTO THE GROUND OR, IF IMPRACTICAL, PLACED IN A MOUND OF EARTH OR ROCKS. ONE POST FOR THE DISCOVERY MONUMENT(+), ONE FOR EACH OF THE FOUR CORNERS, AND ONE AT THE CENTER OF EACH SIDELINE PURSUANT TO NRS 517.030.

ALL DISCOVERY MONUMENTS(+) ARE LOCATED TEN FEET FROM THE CENTER OF THE SIDE LINES.

ALL END LINES ARE PARALLEL TO ENJOY EXTRALATERAL RIGHTS.

THE LOCATION OF THE SECTION LINES AND QUARTER SECTION LINES ON THIS MAP ARE ACCURATE --- THE PERCENTAGE OF STANDARD MEAN DEVIATION FROM THE U.S.G.S.'S ROBERTS CREEK MOUNTAIN QUADRANGLE IS ONLY 1.2%.

SCALE 1" = 500'

FILED AT THE REQUEST OF Chadwick D'Lara  
on July 16, 1987 at 42 mins. past 30 M.  
EUREKA COUNTY, NEVADA M.N. REBALEATI, Recorder  
File No. 109718 Fee \$ 120.00

LOCATED ON July 14<sup>th</sup>, 1987  
IN AN UNKNOWN MINING DISTRICT BY:  
CHADWICK D'LARA

625 W. ARROYO STREET  
RENO, NV 89509  
(702) 323-7117

OR 524 - 26th AV.  
SAN FRANCISCO, CA 94121  
(415) 752-2519

LAND SURVEYORS:  
BOUNDY & FORMAN INC.

298 E. 11th  
ELY, NV 89301  
(702) 289-8835

ASK FOR:  
RICHARD FORMAN



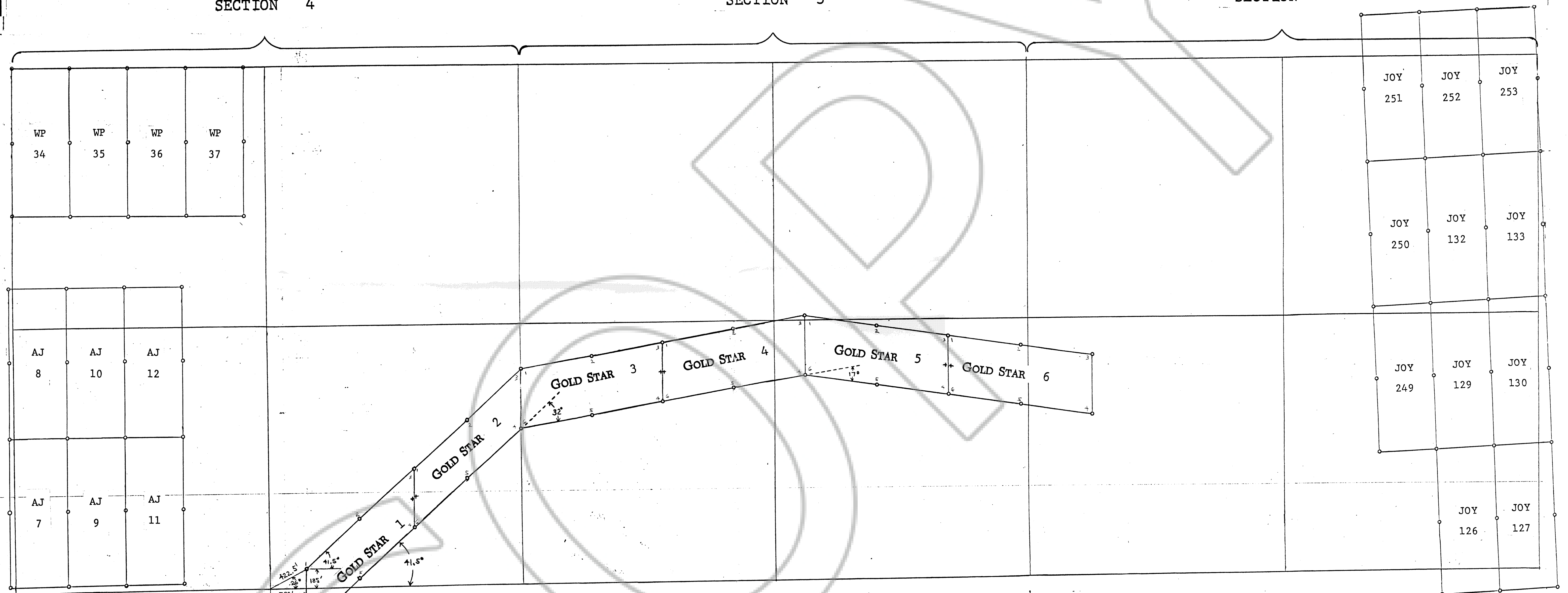
# MAP OF THE "GOLD STAR" GROUP OF LODE CLAIMS

TOWNSHIP 23 NORTH RANGE 50 EAST OF THE MOUNT DIABLO MERIDIAN, NEVADA

SECTION 4

SECTION 3

SECTION 2

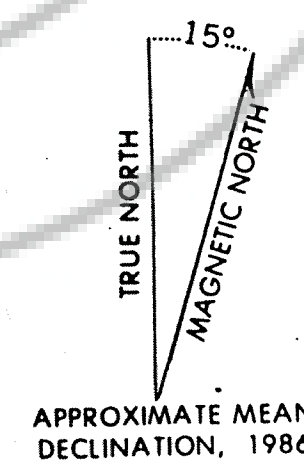


ALL CLAIMS ARE 600' X 1500' PARALLELOGRAMS WITH SIDE CENTERS SET 750' FROM THE END LINES. EACH CLAIM HAS SEVEN POSTS. SOME POSTS DOUBLE FOR TWO CLAIMS. ALL POSTS ARE MADE OF DURABLE PLASTIC PIPE AT LEAST THREE INCHES IN DIAMETER. ALL PIPES ARE AT LEAST FOUR FEET LONG SET ONE FOOT INTO THE GROUND OR, IF IMPRACTICAL, PLACED IN A MOUND OF EARTH OR ROCKS. ONE POST FOR THE DISCOVERY MONUMENT(+), ONE FOR EACH OF THE FOUR CORNERS, AND ONE AT THE CENTER OF EACH SIDELINE PURSUANT TO NRS 517.030.

ALL DISCOVERY MONUMENTS(+) ARE LOCATED TEN FEET FROM THE CENTER OF THE SIDE LINES.

ALL END LINES ARE PARALLEL TO ENJOY EXTRALATERAL RIGHTS.

THE LOCATION OF THE SECTION LINES AND QUARTER SECTION LINES ON THIS MAP ARE ACCURATE --- THE PERCENTAGE OF STANDARD MEAN DEVIATION FROM THE U.S.G.S.'S ROBERTS CREEK MOUNTAIN QUADRANGLE IS ONLY 1.2%.



SCALE 1" = 500'

FILED AT THE REQUEST OF Chadwick D'Lara  
on July 16, 1987  
EUREKA COUNTY, NEVADA  
FILE NO. 109718

RECORDS OF  
M.N. REDEALATI, Recorder  
Fee \$ 20.00

LOCATED ON July 15<sup>TH</sup>, 1987

IN AN UNKNOWN MINING DISTRICT BY:

CHADWICK D'LARA

625 W. ARROYO STREET  
RENO, NV 89509

(702) 323-7117

OR 524 - 26th AV.  
SAN FRANCISCO, CA 94121

(415) 752-2519

LAND SURVEYORS:

BOUNDY & FORMAN INC.

298 E. 11th  
ELY, NV 89301

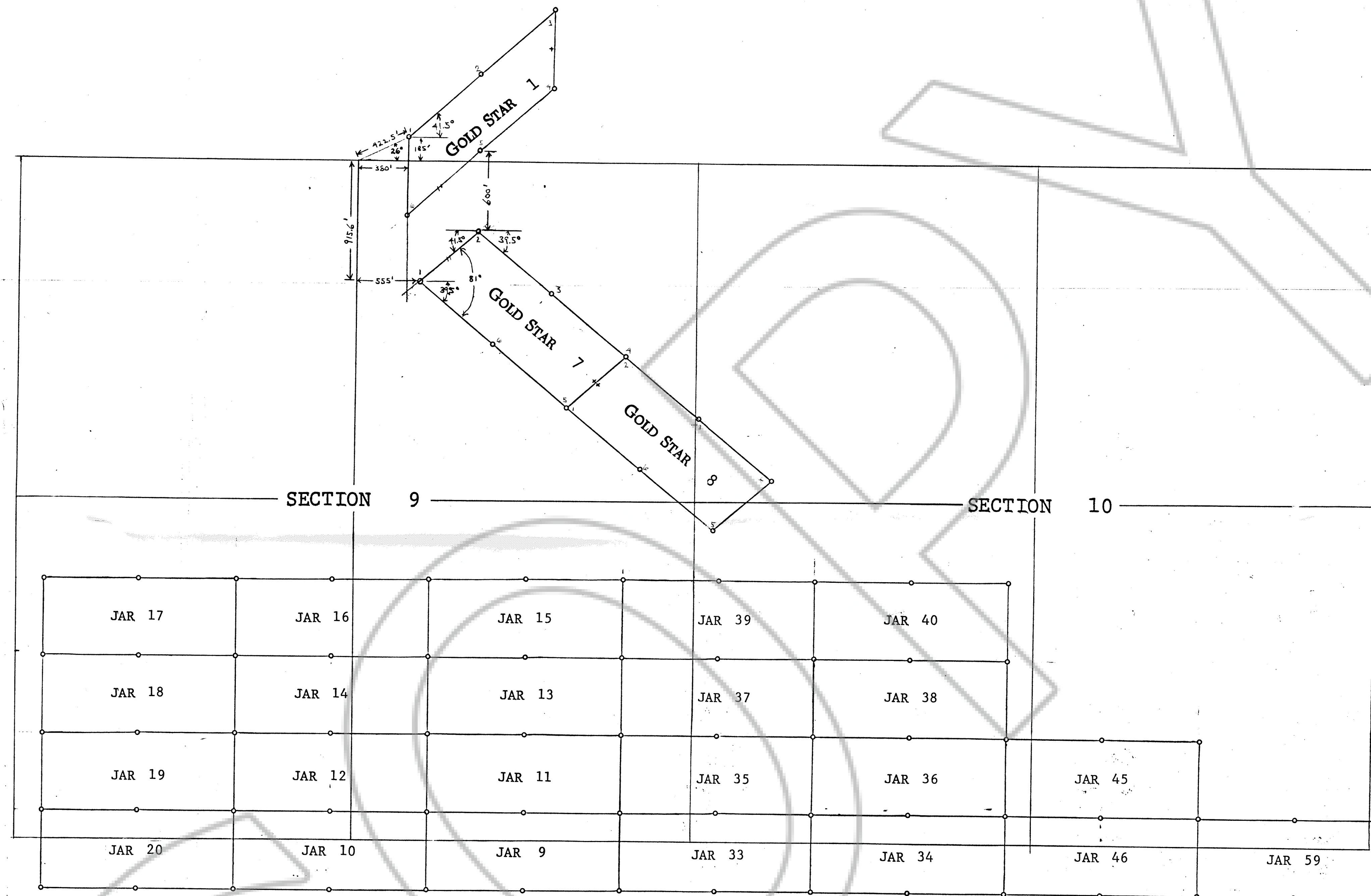
(702) 289-8835

ASK FOR:  
RICHARD FORMAN



# MAP OF THE "GOLD STAR" GROUP OF LODE CLAIMS

TOWNSHIP 23 NORTH RANGE 50 EAST OF THE MOUNT DIABLO MERIDIAN, NEVADA

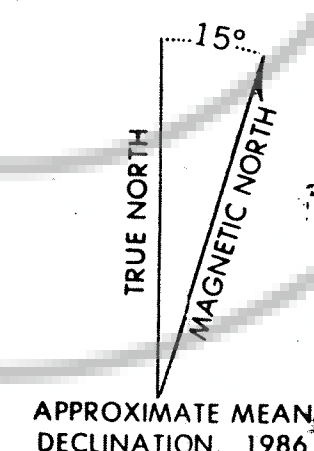


ALL CLAIMS ARE 600' X 1500' PARALLELOGRAMS WITH SIDE CENTERS SET 750' FROM THE END LINES. EACH CLAIM HAS SEVEN POSTS. SOME POSTS DOUBLE FOR TWO CLAIMS. ALL POSTS ARE MADE OF DURABLE PLASTIC PIPE AT LEAST THREE INCHES IN DIAMETER. ALL PIPES ARE AT LEAST FOUR FEET LONG SET ONE FOOT INTO THE GROUND OR, IF IMPRACTICAL, PLACED IN A MOUND OF EARTH OR ROCKS. ONE POST FOR THE DISCOVERY MONUMENT(+), ONE FOR EACH OF THE FOUR CORNERS, AND ONE AT THE CENTER OF EACH SIDELINE PURSUANT TO NRS 517.030.

ALL DISCOVERY MONUMENTS(+) ARE LOCATED TEN FEET FROM THE CENTER OF THE SIDE LINES.

ALL END LINES ARE PARALLEL TO ENJOY EXTRALATERAL RIGHTS.

THE LOCATION OF THE SECTION LINES AND QUARTER SECTION LINES ON THIS MAP ARE ACCURATE --- THE PERCENTAGE OF STANDARD MEAN DEVIATION FROM THE U.S.G.S.'S ROBERTS CREEK MOUNTAIN QUADRANGLE IS ONLY 1.2%.



SCALE 1" = 500'

109718

FILED AT THE REQUEST OF Chadwick D. Lara  
on July 16, 1987 at 49 mins. past 3p M.  
EUREKA COUNTY, NEVADA  
File No. 109718  
M.N. REBALEATI, Recorder  
Fee \$ 120.00

LOCATED ON July, 14<sup>th</sup>, 1987

IN AN UNKNOWN MINING DISTRICT BY:

CHADWICK D. LARA

625 W. ARROYO STREET  
RENO, NV 89509

524 - 26th AV.  
SAN FRANCISCO, CA 94121

(702) 323-7117

(415) 752-2519

LAND SURVEYORS:

BOUNDY & FORMAN INC.

298 E. 11th  
ELY, NV 89301

ASK FOR:  
RICHARD FORMAN

(702) 289-8835