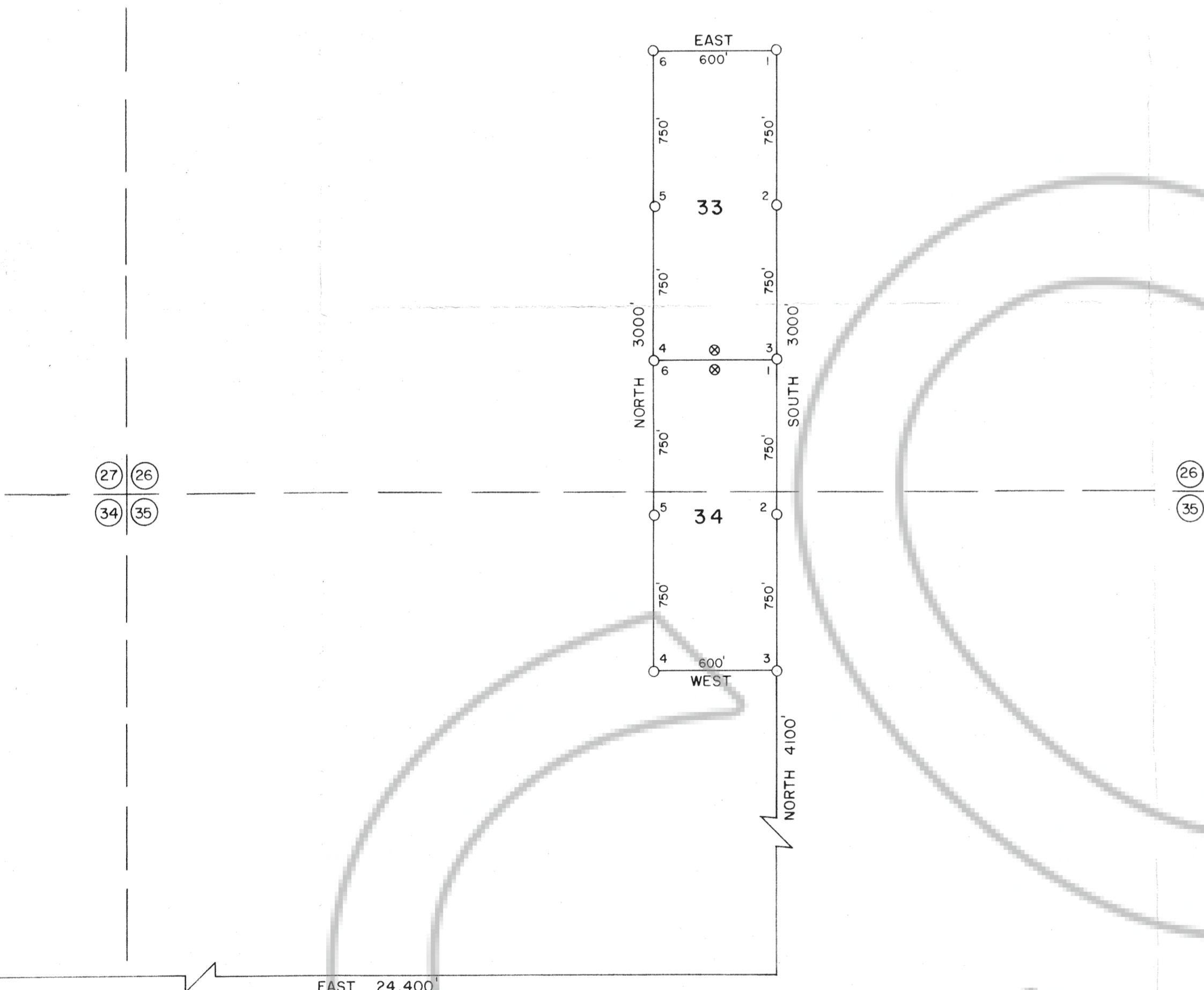


T. 23 N.

R. 50 E.

SE CORNER
SECTION 36
T.23N., R.49E., M.D.M.



LOCATION DATES
JUNE 30, 1987 - 33,34

LEGEND

- 3" DIA. DURABLE PLASTIC PIPE MONUMENT (4' LONG)
- ⊗ 3" DIA. DURABLE PLASTIC PIPE LOCATION MONUMENT (4' LONG)
- ⊗ ⊗ INDICATES SECTION CORNER, SECTION LINES ARE PROJECTED

NOTE: LOCATION MONUMENTS 50' FROM END OF CLAIM



FILED AT THE REQUEST OF Apex Surveying, Inc.
 on July 21, 1987 at 10 mins. past 10 A.M.
 EUREKA COUNTY, NEVADA RECORDS OF
 M.N. REDALEATI, Recorder
 File No. 110317 File # 10-20

MAP OF THE
ZOFF LODE MINING CLAIMS
 EUREKA COUNTY, NEVADA

LOCATED BY: RICK VAN NIEUWENHUYSE
 AGENT FOR
 ATLAS PRECIOUS METALS INC.
 P.O. BOX 1207
 MOAB, UTAH 84532
 JULY 21, 1987

APEX SURVEYING INC. RIVERTON, WYOMING

110317