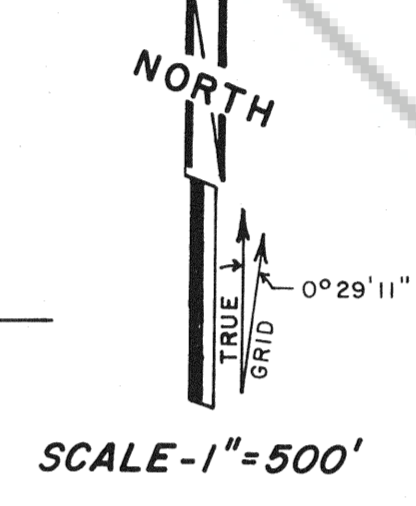
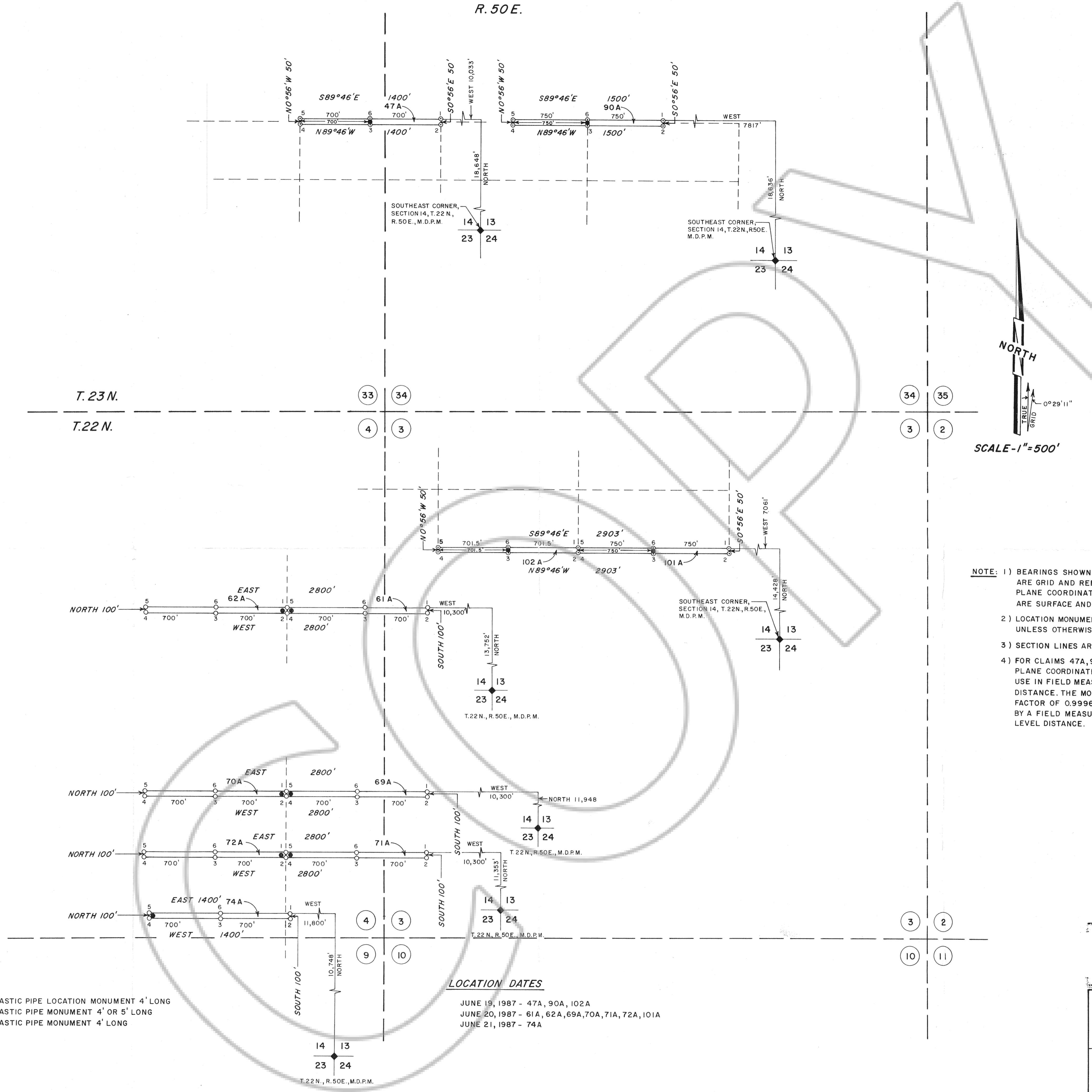


R. 50 E.



SCALE - 1" = 500'

- NOTE: 1) BEARINGS SHOWN FOR CLAIMS 47A, 90A, 101A & 102A ARE GRID AND REFERENCED TO THE NEVADA STATE PLANE COORDINATE SYSTEM, EAST ZONE (DISTANCES ARE SURFACE AND NOT SEA LEVEL).
- 2) LOCATION MONUMENTS ARE 10' FROM END LINE OF CLAIM UNLESS OTHERWISE INDICATED.
- 3) SECTION LINES ARE PROJECTED
- 4) FOR CLAIMS 47A, 90A, 101A & 102A A MODIFIED STATE PLANE COORDINATE SYSTEM HAS BEEN COMPUTED FOR USE IN FIELD MEASUREMENT CONVERSION TO A SEA DISTANCE. THE MODIFIED SYSTEM USES A COMBINATION FACTOR OF 0.999645365 AND WHEN MULTIPLIED BY BY A FIELD MEASUREMENT WILL RESULT IN A SEA LEVEL DISTANCE.

- LEGEND**
- - 3" DIAMETER DURABLE PLASTIC PIPE LOCATION MONUMENT 4' LONG
  - - 3" DIAMETER DURABLE PLASTIC PIPE MONUMENT 4' OR 5' LONG
  - - 3" DIAMETER DURABLE PLASTIC PIPE MONUMENT 4' LONG

**LOCATION DATES**

JUNE 19, 1987 - 47A, 90A, 102A  
 JUNE 20, 1987 - 61A, 62A, 69A, 70A, 71A, 72A, 101A  
 JUNE 21, 1987 - 74A

FILED AT THE REQUEST OF *Apex Surveying, Inc.*  
 on July 27 1987 at 18 mins. past 2 A. M.  
 EUREKA COUNTY, NEVADA M.N. REBALCATTI, Recorder  
 File No. 110329 Fee 165.00

MAP OF THE  
**WI LODE MINING CLAIMS**  
 EUREKA COUNTY, NEVADA

LOCATED BY: TERRY A. ZENK  
 AGENT FOR  
**ATLAS PRECIOUS METALS INC.**  
 P.O. BOX 1207  
 MOAB, UTAH 84532  
 JULY 17, 1987

APEX SURVEYING INC. RIVERTON, WYOMING

110329