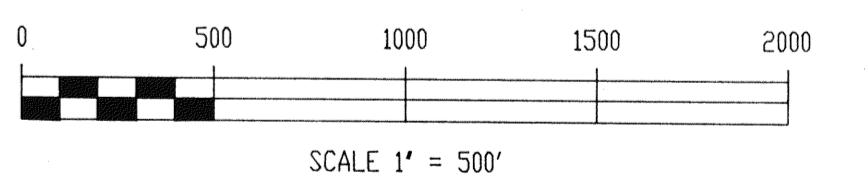




NOTES :

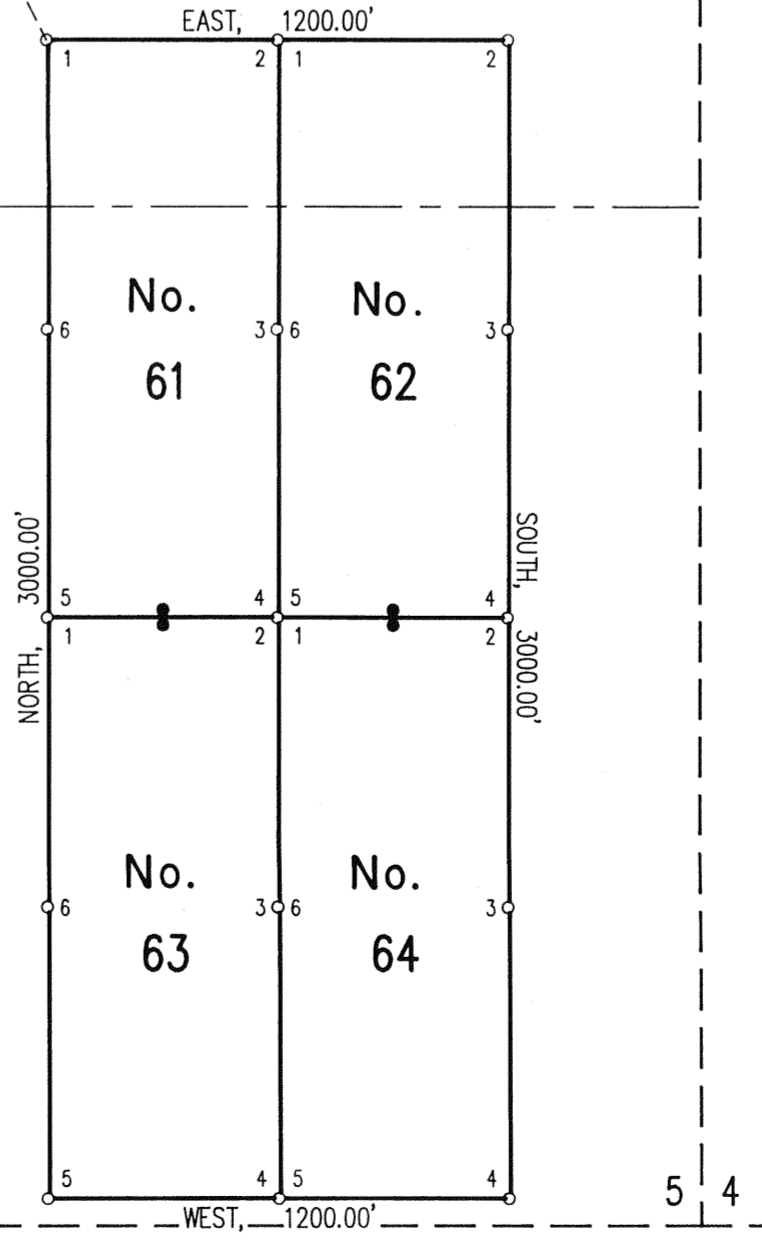
1. All claims are 600' wide x 1500' long with Discovery Monuments 20' from end lines, except as shown and noted.
2. At all Corners, Side Centers and Discovery Monuments are 3" minimum diameter x 5' long PVC posts with aluminum tags denoting the appropriate corners.
3. ○ = Corner and Side Center posts.
● = Discovery Monuments.
4. These claims are located by : Pegasus Gold Corporation
255 West Moana Lane, Suite 108
Reno, Nevada 89509
5. A No. 61 thru 64 located on May 28, 1987.
6. There is a total of 4 claims.
7. Basis of Bearings by Solar Observation.

FILED AT THE REQUEST OF Pegasus Gold Corporation
 on Aug 20 1987, at 2.1 mins, past 10 M.
 RECORDS OF EUREKA COUNTY, NEVADA M. N. REBELEATI, Recorder
 File No. 110761 Fee \$ 60.00



MAP SHOWING
 A LODE MINING CLAIMS
 IN
 T. 23 1/2 N., R. 50 E., M.D.B. & M.
 EUREKA COUNTY, NEVADA
 FOR
 PEGASUS GOLD CORPORATION

SURVEYED & MAPPED
 BY
 BOUNDY & FORMAN, INC.
 ELY, NEVADA
 AUGUST, 1987



(Partially Surveyed)
 T. 24 N.
 (Unsurveyed)
 T. 23 1/2 N.

8339.90'
 N. 27°31' W.

R. 49 E., M.D.B. & M.
 R. 50 E., M.D.B. & M.

R. 49 E., M.D.B. & M.
 R. 50 E., M.D.B. & M.

