

8

9

10

17

16

15

20

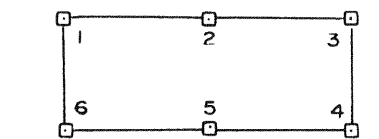
21

22

SYMBOLS

Location Monument - monuments are 20' from end centers.

Corners and side centers - all are 4" dia. (except where noted) x 4" tall PVC pipe. Corners are numbered as shown below:



LOCATION DATE

Claims were located June 3, 1987.

CLAIMANT

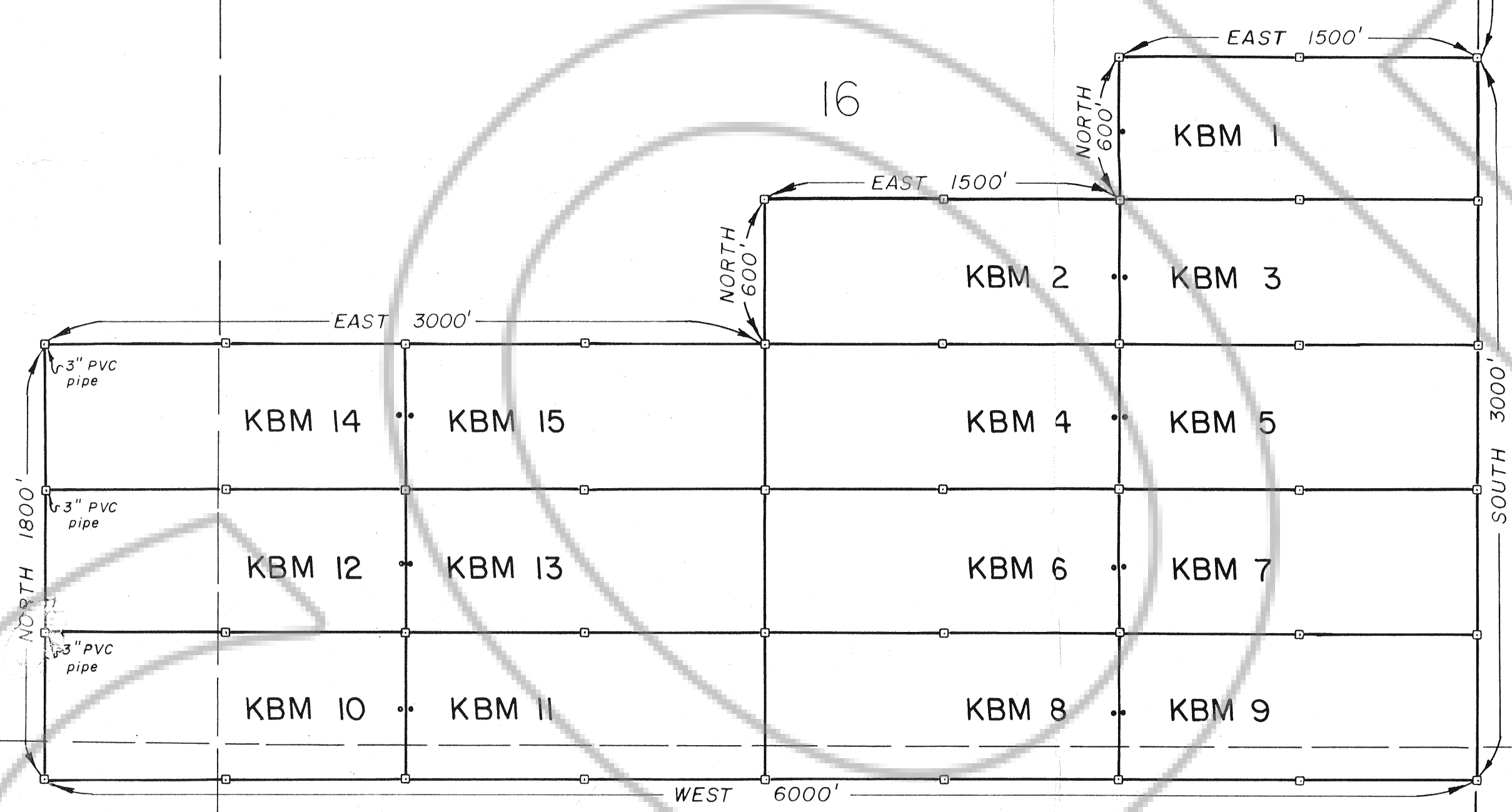
Claims were located on behalf of Noranda Exploration, Inc., P.O. Box 7176, Reno, NV. 89510.

CLAIM SIZE

All claims are 600' x 1500'.

LOCATION

Claims are located in the following quarter sections: NE, SW & SE 1/4s of Sec. 16, the SE 1/4 of Sec. 17, the NE 1/4 of Sec. 20 and the NW & NE 1/4s of Sec. 21, all in T. 34 N., R. 51 E., M.D.B.M.



FILED AT THE REQUEST OF Noranda Exploration, Inc.
on Aug 28, 1987, at 32 MINN. DIST. 32 M.
RECORDS OF EUREKA COUNTY, NEVADA M. N. REBAL (L) Recorder
File No. 110956 Fee \$ 335.00

110956

NORANDA EXPLORATION, INC.

Location Map of the
KBM 1 - 15
Group of Lode Mining Claims
Sited primarily in
Sec. 16, T. 34 N., R. 51 E., M.D.B.M.
EUREKA COUNTY, NEVADA

DATA BY: K. BROGOITTI DWN BY: Jkt SCALE: 1" = 500' DATE: 8/5/87