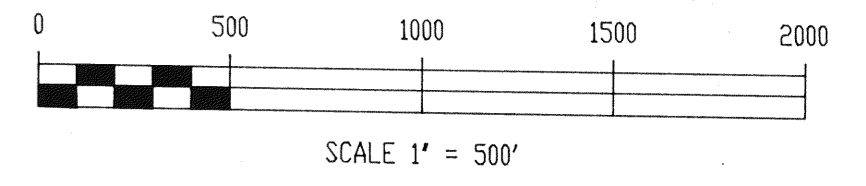


T. 25 N., R. 49 E., M.D.B. & M.

CERTIFICATION  
 I, Richard W. Forman, do hereby certify that this plat, consisting of 4 sheets, is a true and accurate map of a survey made under my supervision and direction between the 15th day of June and the 10th day of August, 1987.  
 Richard W. Forman, P.E., R.L.S. 2898



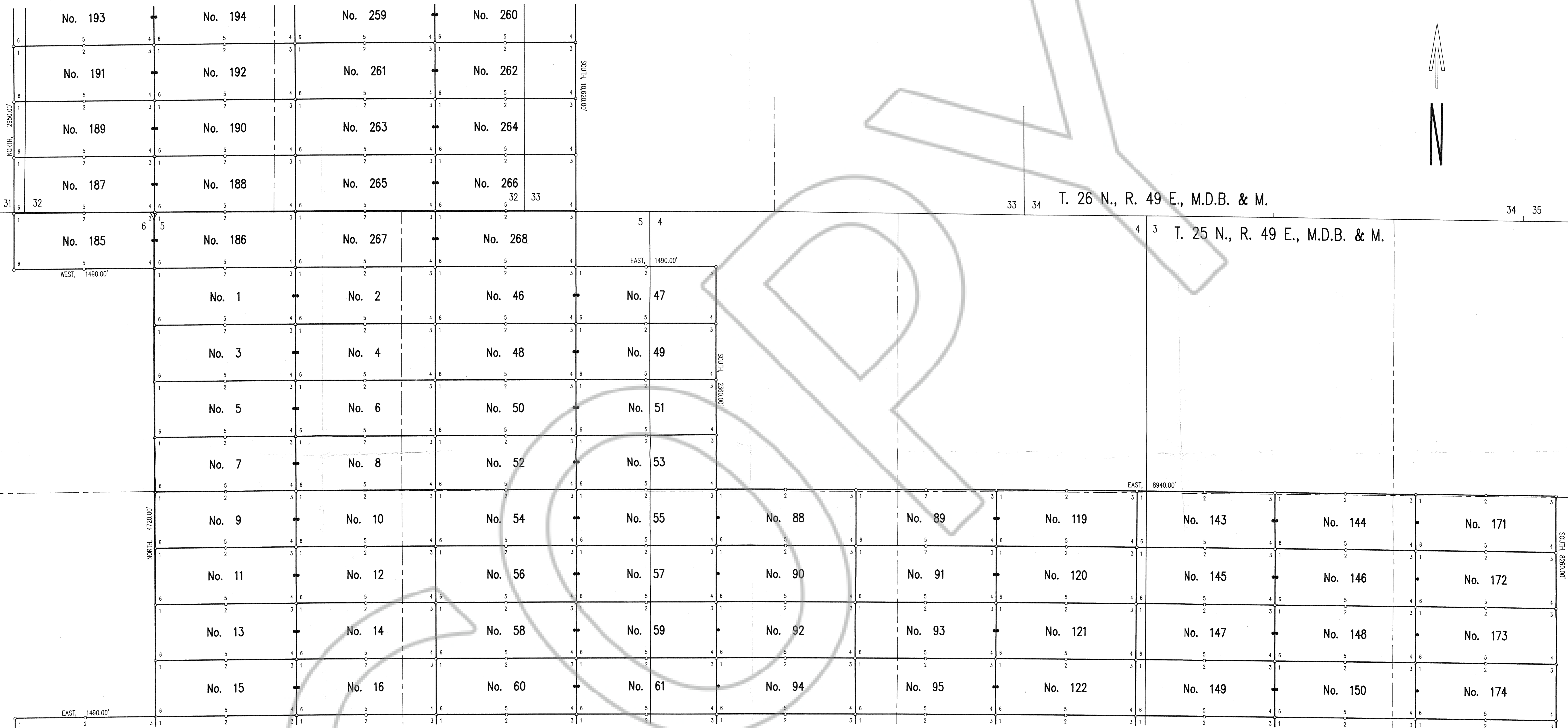
FILED AT THE REQUEST OF Santa Fe Pacific Mining, Inc. on Sept 3, 1987, at 2:00 p.m., past 12:00 M. RECORDS OF EUREKA COUNTY, NEVADA. M. N. REBALEATI, Recorder. File No. 111411 Fee \$ 1,720.00.



SHEET 1 OF 4

MAP SHOWING  
 BS LODE MINING CLAIMS  
 IN  
 T. 25 & 26 N., R. 49 E., M.D.B. & M.  
 EUREKA COUNTY, NEVADA  
 FOR  
 SANTA FE PACIFIC MINING, INC.

SURVEYED & MAPPED BY  
 BOUNDY & FORMAN, INC.  
 ELY, NEVADA  
 AUGUST 1987



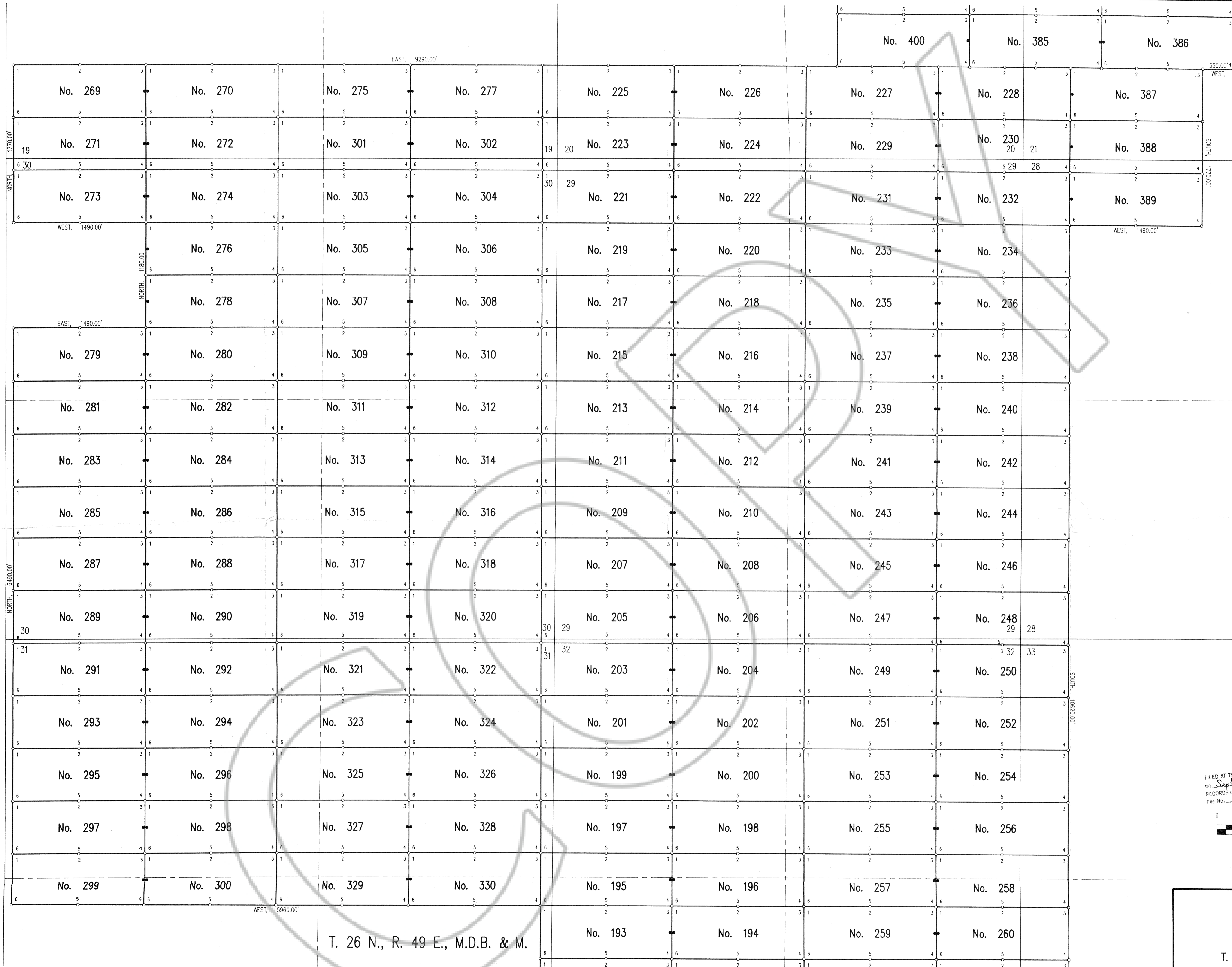
T. 26 N., R. 49 E., M.D.B. & M. T. 25 N., R. 49 E., M.D.B. & M.

FILED AT THE REQUEST OF Santa Fe Pacific Mining, Inc.  
 on Sept 3 1987 at mms, Dist. JAM.  
 RECORDS OF EUREKA COUNTY, NEVADA M. N. REBA PATL, Recorder  
 111411 File No. 500 1000 Fee \$ 1,000.00 2000  
 SCALE 1" = 500'

SHEET 2 OF 4

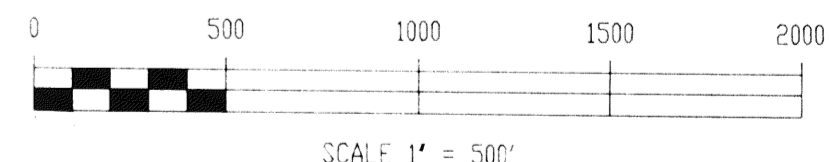
MAP SHOWING  
 BS LODE MINING CLAIMS  
 IN  
 T. 25 & 26 N., R. 49 E., M.D.B. & M.  
 EUREKA COUNTY, NEVADA  
 FOR  
 SANTA FE PACIFIC MINING, INC.

SURVEYED & MAPPED  
 BY  
 BOUNDY & FORMAN, INC.  
 ELY, NEVADA  
 AUGUST 1987



T. 26 N., R. 49 E., M.D.B. & M.

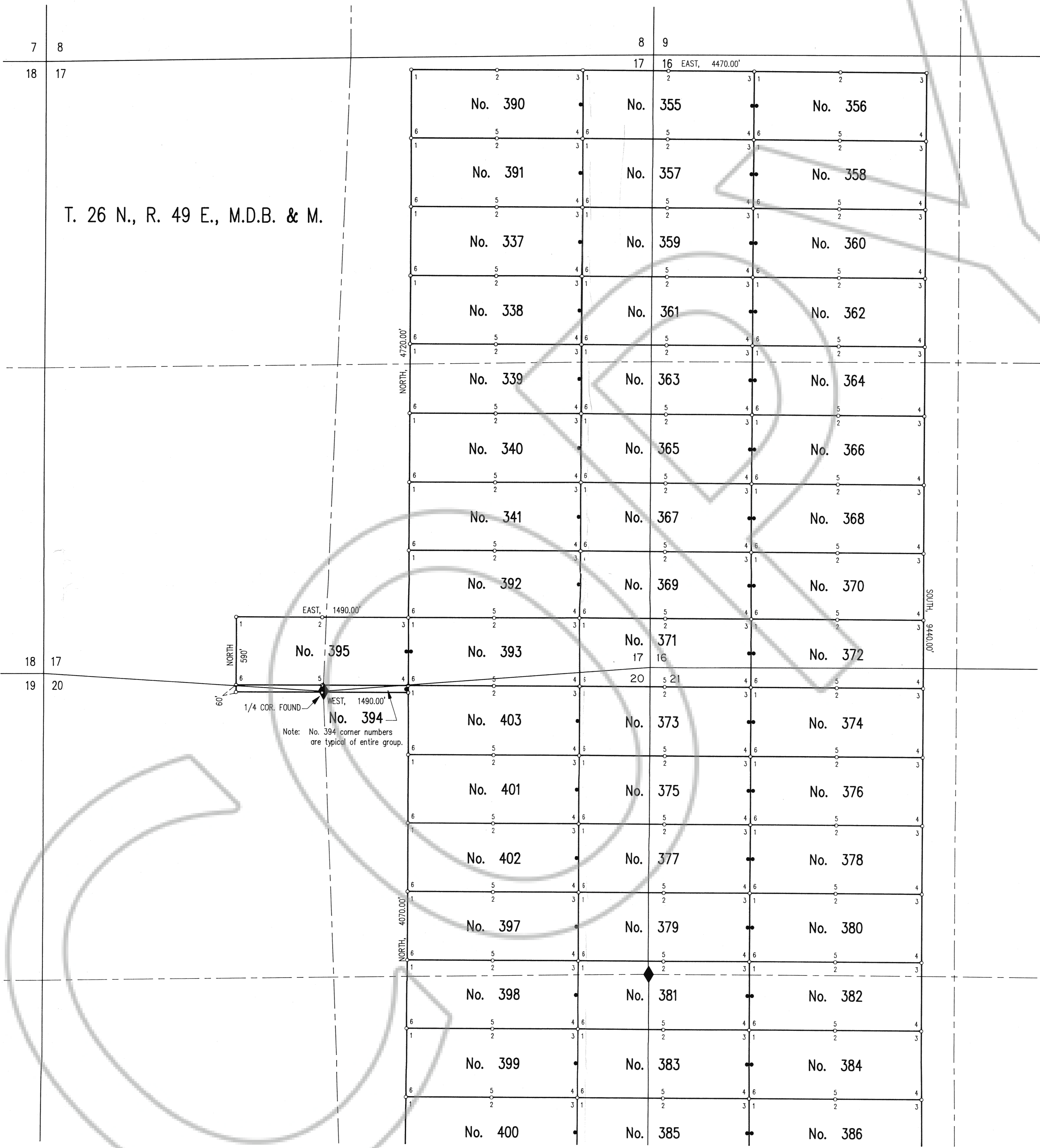
FILED AT THE REQUEST OF *Santa Fe Pacific Mining, Inc.*  
 on *Sept 3 1987* at *11:11 AM*  
 RECORDS OF EUREKA COUNTY, NEVADA W. N. REBALEATI, Recorder  
 File No. *111411* Fee \$ - *2,040.00*



SHEET 3 OF 4

MAP SHOWING  
 BS LODE MINING CLAIMS  
 IN  
 T. 25 & 26 N., R. 49 E., M.D.B. & M.  
 EUREKA COUNTY, NEVADA  
 FOR  
 SANTA FE PACIFIC MINING, INC.

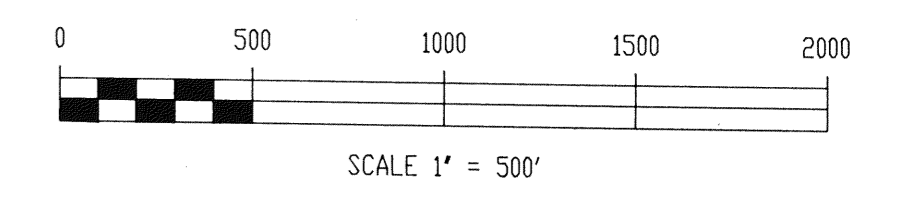
SURVEYED & MAPPED  
 BY  
 BOUNDY & FORMAN, INC.  
 ELY, NEVADA  
 AUGUST 1987



T. 26 N., R. 49 E., M.D.B. & M.

- NOTES:
- All claims are 590' wide x 1490' long with Discovery Monuments 10' from end lines, except as shown and noted.
  - At all Corners, Side Centers and Discovery Monuments are 3" diameter x 5' long posts with aluminum tags denoting the appropriate corners.
  - = Corner and Side Center posts.  
● = Discovery Monuments.
  - These claims are located by: Santa Fe Pacific Mining, Inc.  
250 South Rock Blvd., Suite 100  
Reno, Nevada 89502
  - BS No. 62 thru 69 located on June 15, 1987.  
BS No. 1 thru 45, 56 thru 61, 70 thru 87, 89, 91, 93 and 95 thru 142 located on June 16, 1987.  
BS No. 46 thru 55, 88, 90, 92, 94, 143 thru 268 and 315 thru 330 located on June 17, 1987.  
BS No. 275, 277, 301 thru 314, 355 thru 393, 395 and 397 thru 402 located on June 18, 1987.  
BS No. 269 thru 274, 276 and 278 thru 300 located on June 21, 1987.  
BS No. 394 and 403 located on July 17, 1987.  
BS No. 337 thru 341 located on August 4, 1987.
  - There is a total of 383 claims.

FILED AT THE REQUEST OF Santa Fe Pacific Mining, Inc.  
on Sept. 9 1987, at 11:00 a.m., past 11:00 a.m.  
RECORDS OF EUREKA COUNTY, NEVADA M. N. REBALEATI, Recorder  
File No. 111411 Fee \$ 705.00



SHEET 4 OF 4

MAP SHOWING  
BS LODE MINING CLAIMS  
IN  
T. 25 & 26 N., R. 49 E., M.D.B. & M.  
EUREKA COUNTY, NEVADA  
FOR  
SANTA FE PACIFIC MINING, INC.

SURVEYED & MAPPED  
BY  
BOUNDY & FORMAN, INC.  
ELY, NEVADA  
AUGUST 1987