

T. 25 N.

R. 50 E.

MATCH SHEET 2

TRUE NORTH

SCALE 1" = 500'

LEGEND

- INDICATES 3" DIA. x 4' LONG DURABLE PLASTIC PIPE MONUMENT
- INDICATES 3" DIA. x 4' LONG DURABLE PLASTIC PIPE LOCATION MONUMENT
- ⊗ INDICATES SECTION CORNER - SECTION LINES ARE PROJECTED

NOTE

LOCATION MONUMENTS ARE 10' FROM END LINE OF CLAIM UNLESS OTHERWISE NOTED.

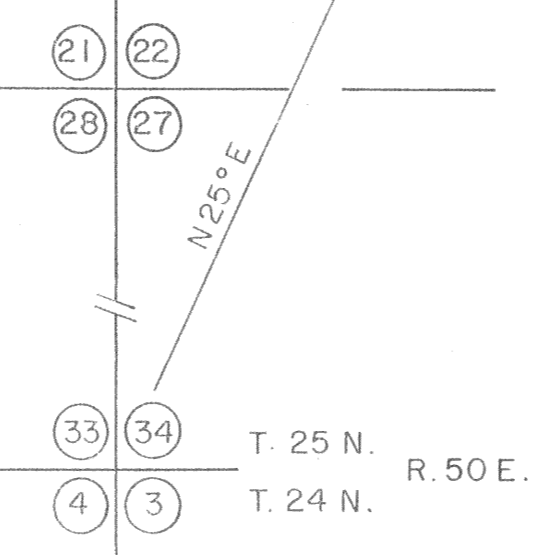
LOCATION DATES

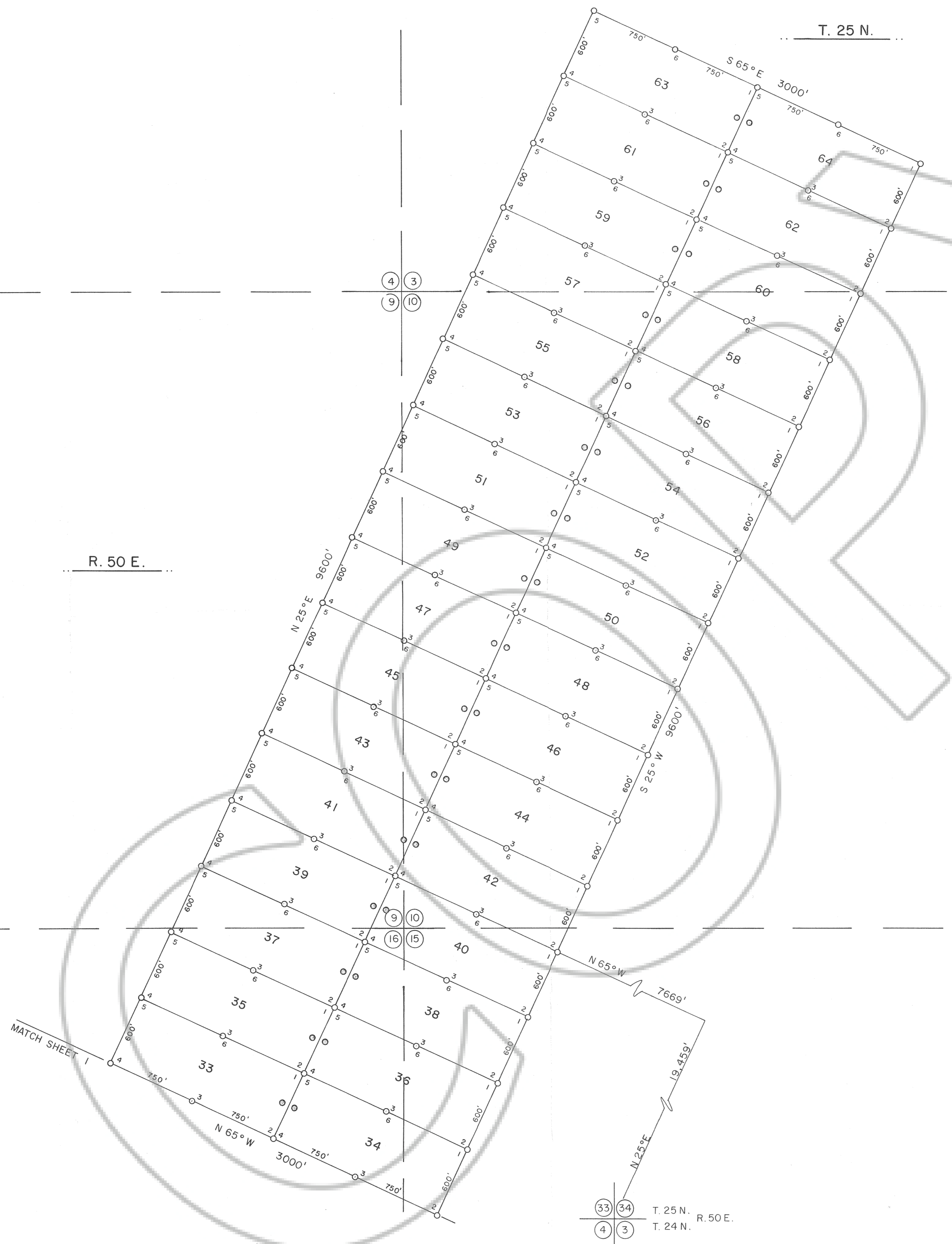
JULY 14, 1987 - 1 THROUGH 32

FILED AT THE REQUEST OF *Apex Surveying, Inc.*
 on *Sept 28* 1987, at *12* min, past *12* M.
 RECORDS OF EUREKA COUNTY, NEVADA M. N. REBALEATI, Recorder
 File No. *112283* Fee \$ *480.00*

SHEET 1 OF 2

MAP OF THE NORTH LODGE MINING CLAIMS EUREKA COUNTY, NEVADA
LOCATED BY: CHRIS BROILI AGENT FOR ATLAS PRECIOUS METALS INC. P.O. BOX 1207 MOAB, UTAH 84532 SEPTEMBER 22, 1987 APEX SURVEYING INC. RIVERTON, WYOMING





5 4
8 9

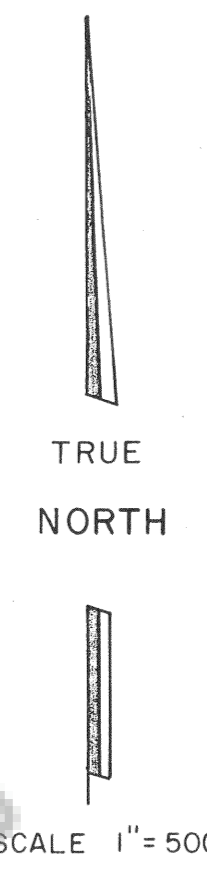
4 3
9 10

3 2
10 11

8 9
17 16

10 11
15 14

33 34
4 3
T. 25 N. R. 50 E.
T. 24 N.



LEGEND

- INDICATES 3" DIA. x 4' LONG DURABLE PLASTIC PIPE MONUMENT
- INDICATES 3" DIA. x 4' LONG DURABLE PLASTIC PIPE LOCATION MONUMENT
- ⊗ INDICATES SECTION CORNER - SECTION LINES ARE PROJECTED

NOTE

LOCATION MONUMENTS ARE 10' FROM END LINE OF CLAIM UNLESS OTHERWISE NOTED.

LOCATION DATES

JULY 14, 1987 - 33 THROUGH 64

FILED AT THE REQUEST OF *Apex Surveying, Inc.*
 on *Sept 28, 1987*, at *12* mins, past *1 p.* M.
 RECORDS OF EUREKA COUNTY, NEVADA M. N. REBEAULT, Recorder
 File No. **112283** Fee \$ *460.00*

SHEET 2 OF 2

MAP OF THE
NORTH LODGE MINING CLAIMS
 EUREKA COUNTY, NEVADA

LOCATED BY: CHRIS BROILI
 AGENT FOR
 ATLAS PRECIOUS METALS INC.
 P.O. BOX 1207
 MOAB, UTAH 84532
 SEPTEMBER 22, 1987
 APEX SURVEYING INC. RIVERTON, WYOMING

112283