

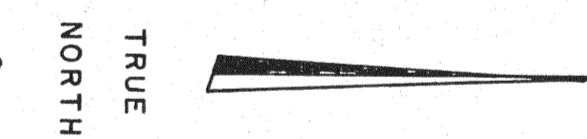
LEGEND

- INDICATES 3" DIA. X 4' LONG DURABLE PLASTIC PIPE MONUMENT
- INDICATES 3" DIA. X 4' LONG DURABLE PLASTIC PIPE LOCATION MONUMENT
- INDICATES SECTION CORNER—SECTION LINES ARE PROJECTED

LOCATION DATES

AUGUST 8, 1987 - 109 THRU 137
 AUGUST 9, 1987 - 138 THRU 189
 SEPTEMBER 28, 1987 - 194 THRU 198
 SEPTEMBER 30, 1987 - 199 THRU 202

SCALE: 1" = 500'



FILED AT THE REQUEST OF *Apex Surveying, Inc.*
 on *Oct 13 1987*, at *16* mins, past *12* P.M.
 RECORDS OF EUREKA COUNTY, NEVADA M.N. REBALEATI, Recorder
 File No. **112568** Fee \$ *2070.00*

SHEET 3

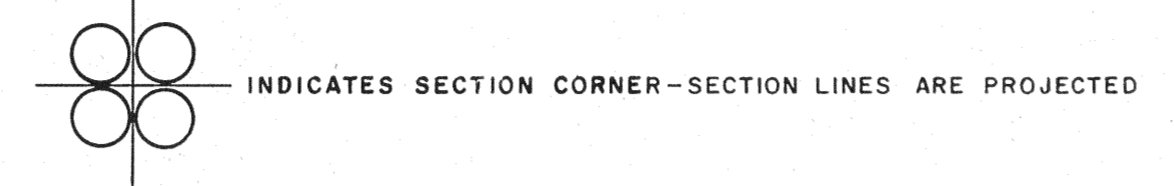
MAP OF THE
NORTH LODGE MINING CLAIMS
 EUREKA COUNTY, NEVADA

LOCATED BY
 TERRY ZENK AND RICHARD D. INBERG
 AGENTS FOR
 ATLAS PRECIOUS METALS INC.
 P.O. BOX 1207
 MOAB, UTAH 84532
 OCTOBER 1, 1987

APEX SURVEYING, INC. RIVERTON, WYOMING

112568

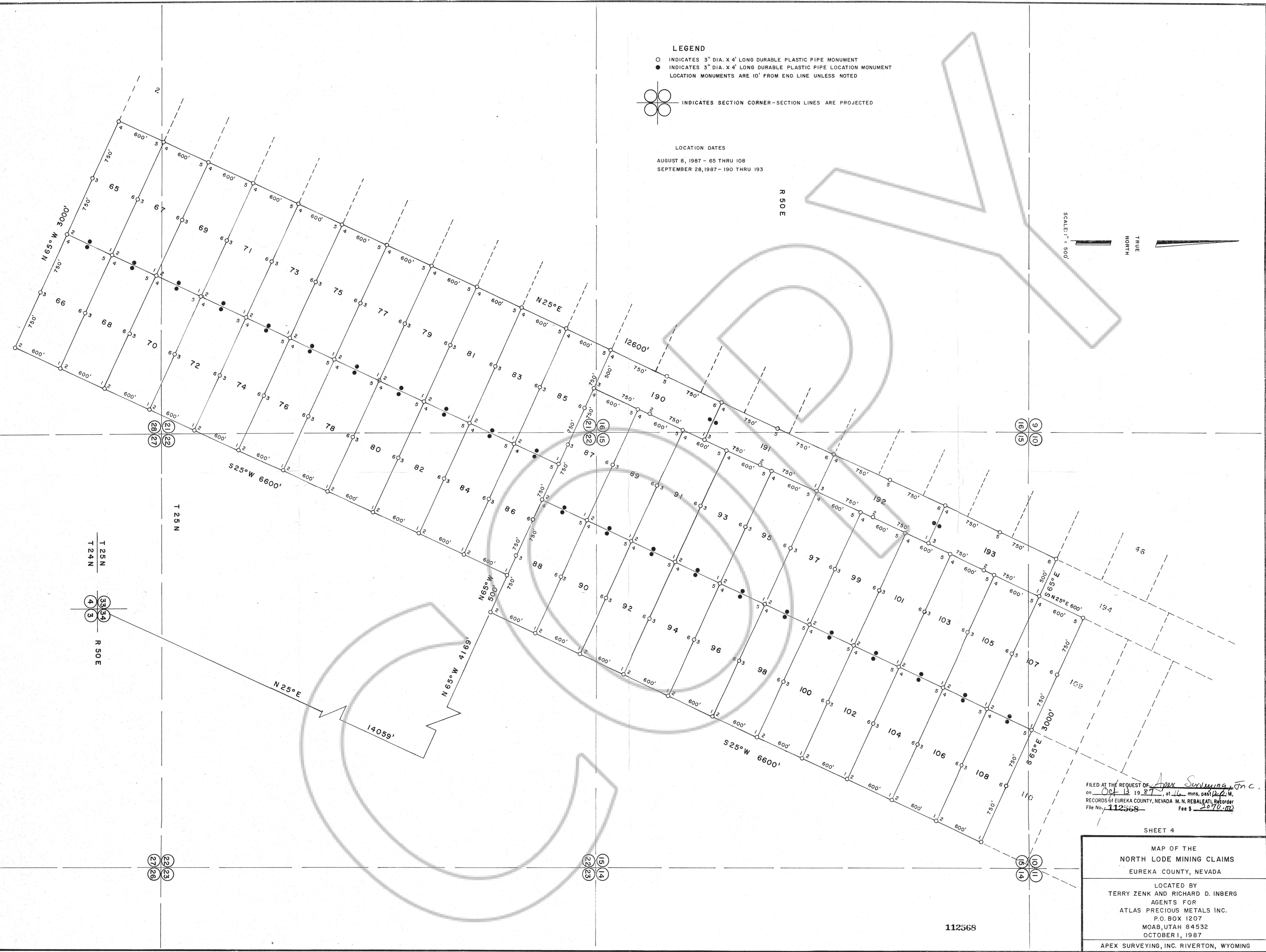
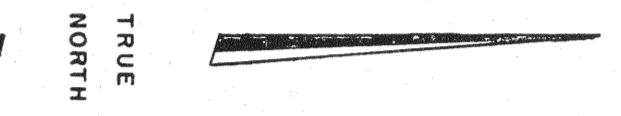
LEGEND
 ○ INDICATES 3" DIA. X 4' LONG DURABLE PLASTIC PIPE MONUMENT
 ● INDICATES 3" DIA. X 4' LONG DURABLE PLASTIC PIPE LOCATION MONUMENT
 LOCATION MONUMENTS ARE 10' FROM END LINE UNLESS NOTED



LOCATION DATES
 AUGUST 8, 1987 - 65 THRU 108
 SEPTEMBER 28, 1987 - 190 THRU 193

R 50 E

SCALE: 1" = 500'



FILED AT THE REQUEST OF *Apex Surveying, Inc.*
 on *Oct 13 1987* at *16* mins, *59* sec, *W*
 RECORDS OF EUREKA COUNTY, NEVADA M. N. REBALEATI, RECORDER
 File No. *112568* Fee \$ *2070.00*

SHEET 4

MAP OF THE
 NORTH LODE MINING CLAIMS
 EUREKA COUNTY, NEVADA

LOCATED BY
 TERRY ZENK AND RICHARD D. INBERG
 AGENTS FOR
 ATLAS PRECIOUS METALS INC.
 P.O. BOX 1207
 MOAB, UTAH 84532
 OCTOBER 1, 1987

APEX SURVEYING, INC. RIVERTON, WYOMING

112568