

R 52 E

23

27

TIE - Corner no. 5 LAKE 302 (common corner no. 2 existing DL 190 and no. 1 existing DL 192) approx. 7800' north and 280' east of corner no. 1 of existing DL 44.

TIE - Common corner no. 4 LAKE 300 and no. 5 LAKE 301 approx. 6000' north and 200' west of corner no. 1 of existing DL 44.

EXISTING

TIE - Corner no. 5 LAKE 304 (common corner no. 4 existing DL 195) approx. 1800' north and 1580' east of corner no. 1 of existing DL 44.

TIE - Approx. 15,840' to corner no. 1 DL 44

DL 44

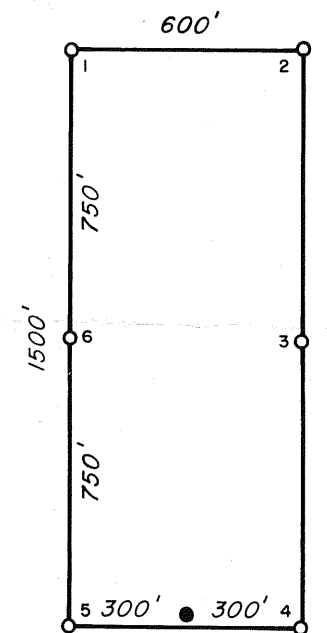
T 19 N

33

34

- ◆ KNOWN SECTION CORNER
- ▲ TIE CORNER
- CORNER AND SIDE CENTER POSTS
4" WHITE PVC PIPE
- DISCOVERY MONUMENT
4" WHITE PVC PIPE

REFER TO NOTES FOR TIES.

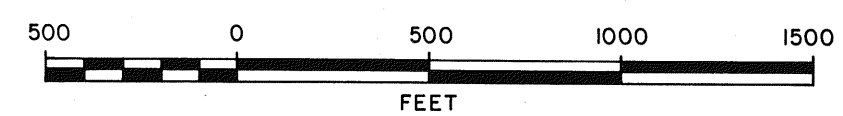


TYPICAL CLAIM

Discovery monument is located 10' from end line unless otherwise noted.

LOCATION DATE:
July 23, 1987

LOCATED BY:
Homestake Mining Company
155 Glendale Ave., Suite 18
Sparks, Nevada 89431



LODE CLAIM MAP showing

LAKE Claims 300 - 309

T 19 N, R 52 E MDBM
EUREKA COUNTY, NEVADA

112579

FILED AT THE REQUEST OF *Homestake Mining Co.*
on *Oct 13* 1987, at _____ mins, past _____ M.
RECORDS OF EUREKA COUNTY, NEVADA M. N. REBELETTI, Recorder
File No. **112579** Fee \$ **160.00**