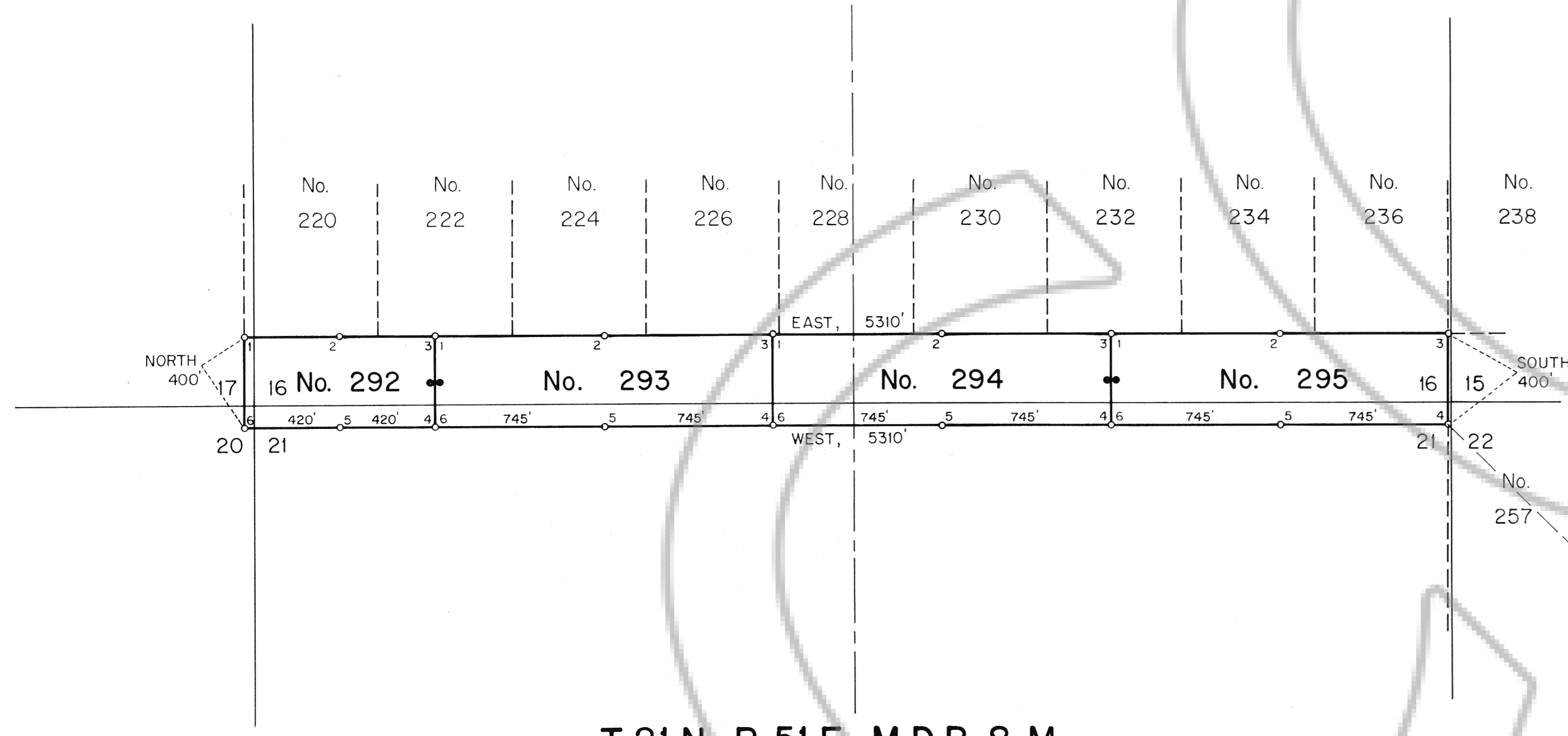
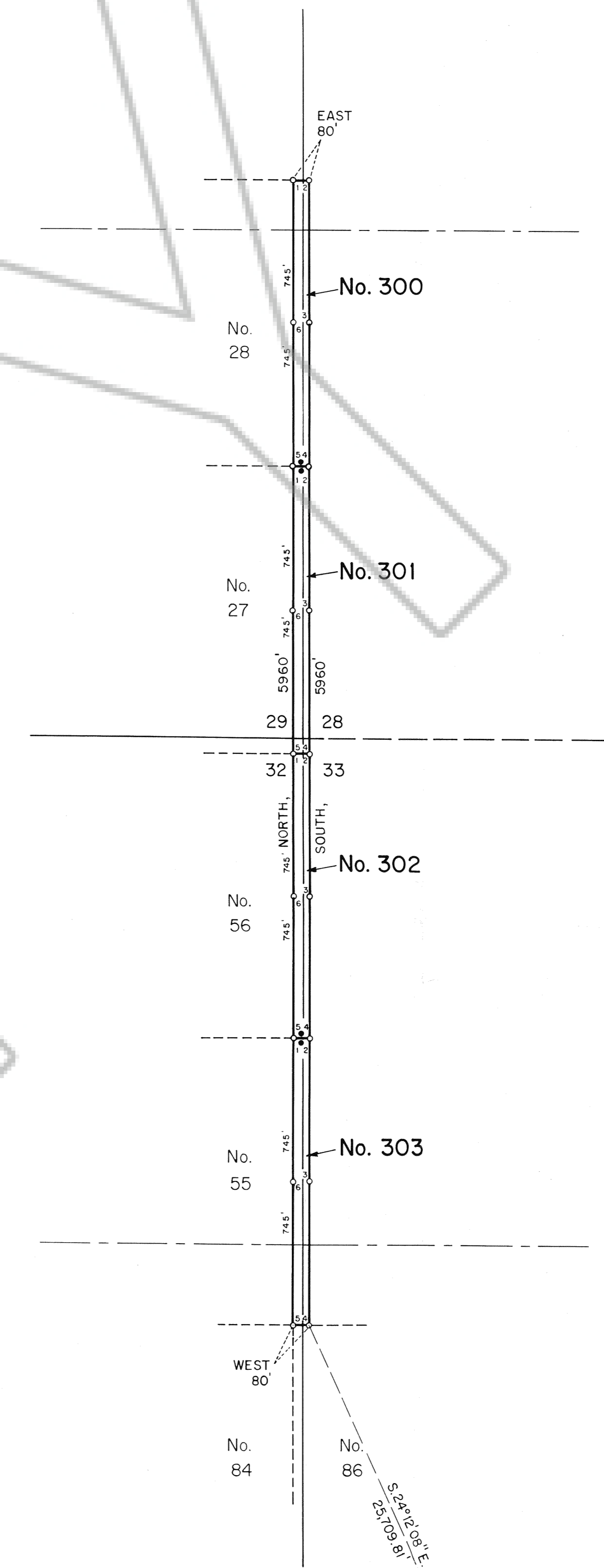


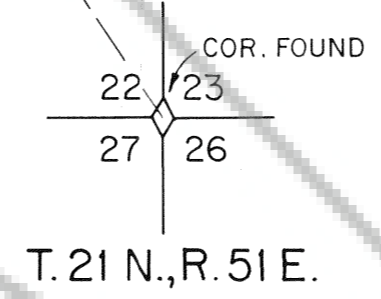
T. 21 N., R. 51 E., M.D.B. & M.



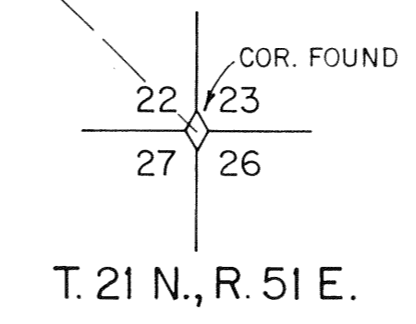
T. 21 N., R. 51 E., M.D.B. & M.



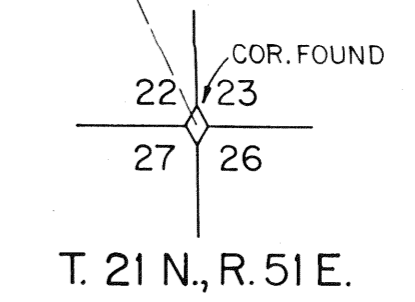
T. 22 N., R. 51 E., M.D.B. & M.



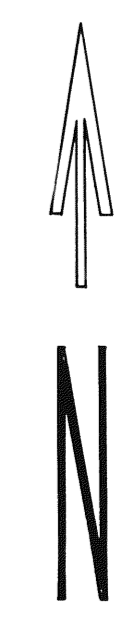
T. 21 N., R. 51 E.



T. 21 N., R. 51 E.



T. 21 N., R. 51 E.



NOTES:

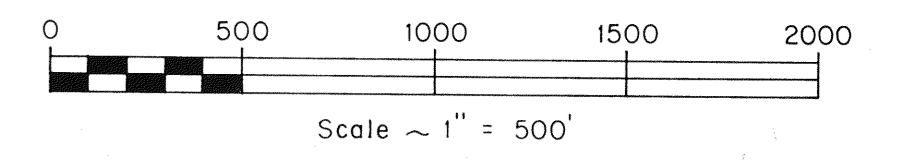
1. Claims width and length as shown and noted with Discovery Monuments 10' from end lines.
2. At all Corners, Side Centers and Discovery Monuments are 3" diameter x 5' long posts with aluminum tags denoting the appropriate corners.
3. ○ = Corner and Side Center posts.
● = Discovery Monuments
4. These claims are located by: Santa Fe Pacific Mining, Inc., 250 South Rock Blvd., Suite 100 Reno, Nevada 89502
5. RMS No. 292 thru 303 located September 20, 1987.
6. There is a total of 12 claims.

CERTIFICATION

I, Richard W. Forman, do hereby certify that this plot is a true and accurate map of a survey made under my supervision and direction on the 20th day of September, 1987.

Richard W. Forman, P.E., R.L.S.

FILED AT THE REQUEST OF SANTA FE PACIFIC MINING, INC. on Oct 22 19 87 at 3:38 mins. past 11 A. M. RECORDS OF EUREKA COUNTY, NEVADA M. N. REBALEATI, Recorder File No. 112632 Fee \$ 180.00



112632

MAP SHOWING
RMS LODE MINING CLAIMS
IN
T. 21 & 22 N., R. 51 E., M.D.B. & M.
EUREKA COUNTY, NEVADA
FOR
SANTA FE PACIFIC MINING, INC.

SURVEYED & MAPPED BY
BOUNDY & FORMAN, INC.
ELY, NEVADA
SEPT. 1987