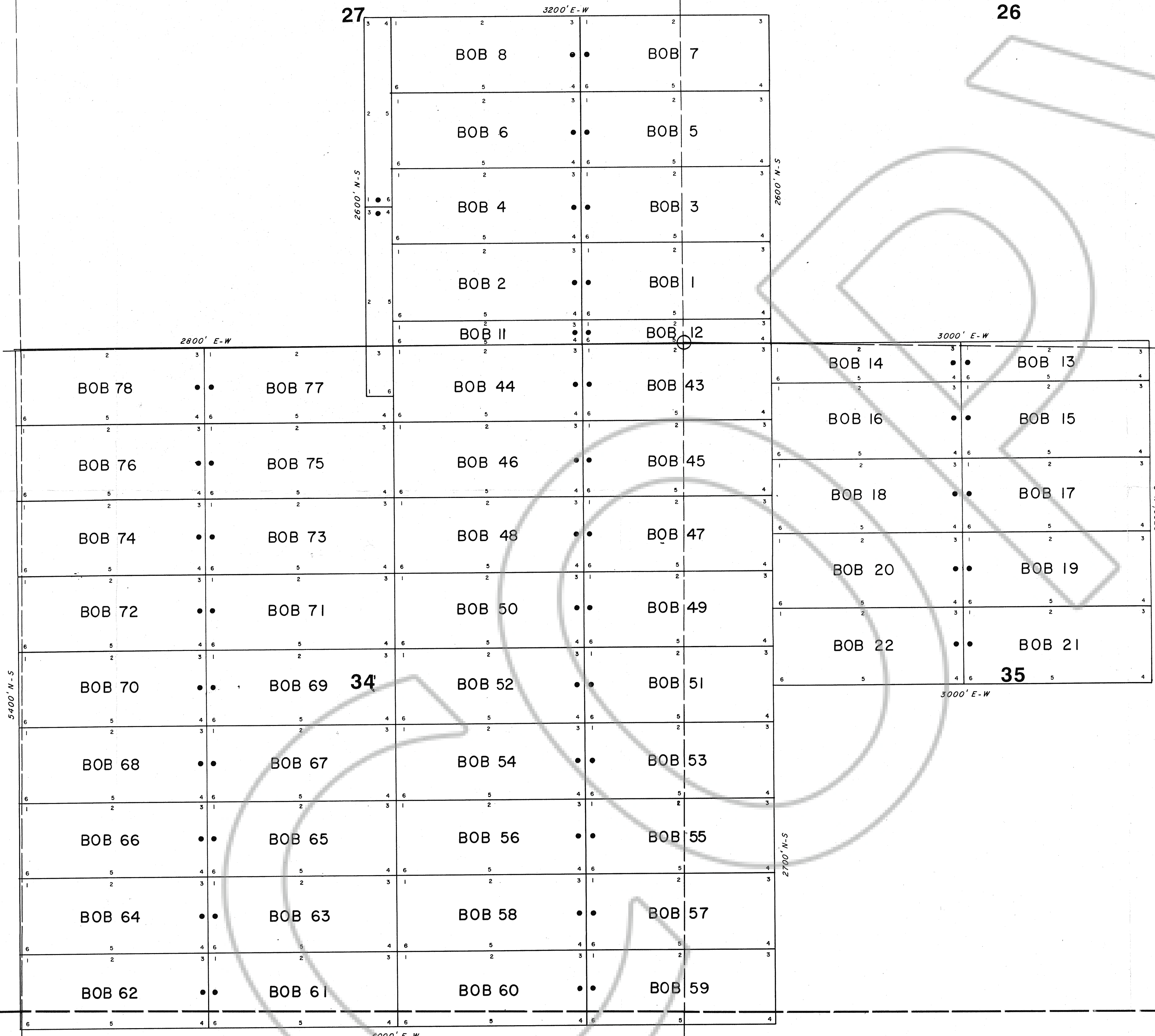
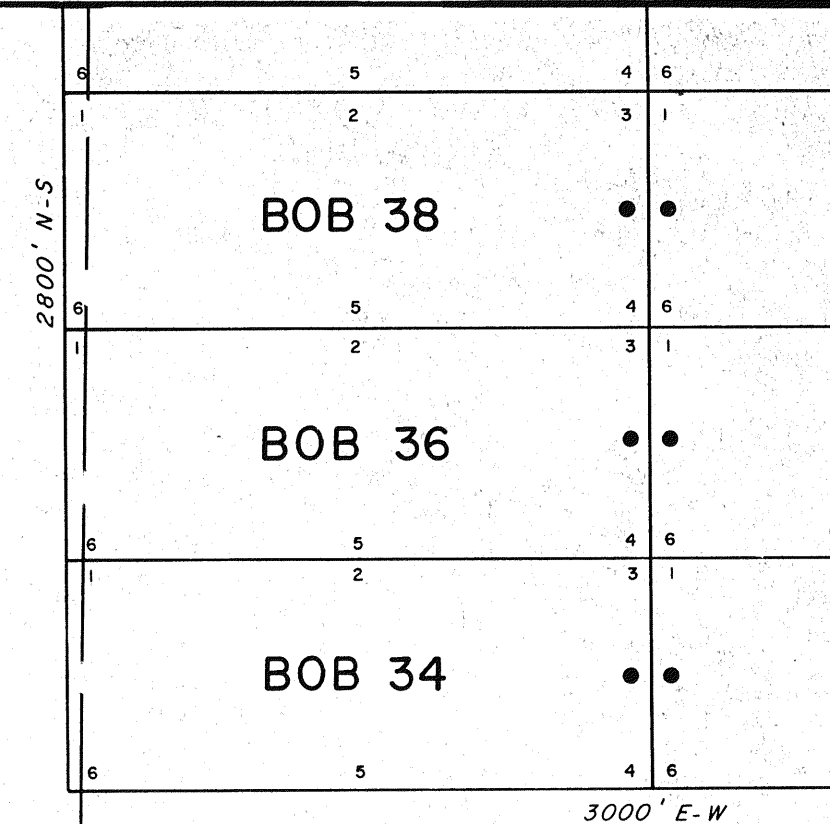


T 32 N, R 49 E

28

27

26



LOCATOR:
 Aquarian Mining Exploration Inc. and D.P. Ward
 P.O. Box 67
 Crescent Valley, Nevada 89821

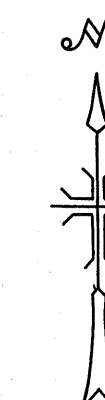
LOCATION DATES:
 September 15-20, 1987

BASIS OF CONTROL:
 Distance from NW corner section 35, T32N, R49E., MDM.
 to NW corner Bob #1 is 800' North and 800' East.

NOTES:
 All claims are 600' wide x 1500' long unless otherwise noted.

All discovery monuments are 50' from endlines unless otherwise noted.

• Discovery Monument



FILED AT THE REQUEST OF *Royal Gold, Inc.*
 on *Oct 23* 19 *87*, at *57* mins, past *10th* M.
 RECORDS OF EUREKA COUNTY, NEVADA M. N. REBALEA, Recorder
 File No. *112857* Fee \$ *80.00*

SCALE: 1"=500'
 0 500 1000 1500 Feet

**BOB 1-22, 43-78
 LODGE MINING CLAIMS**

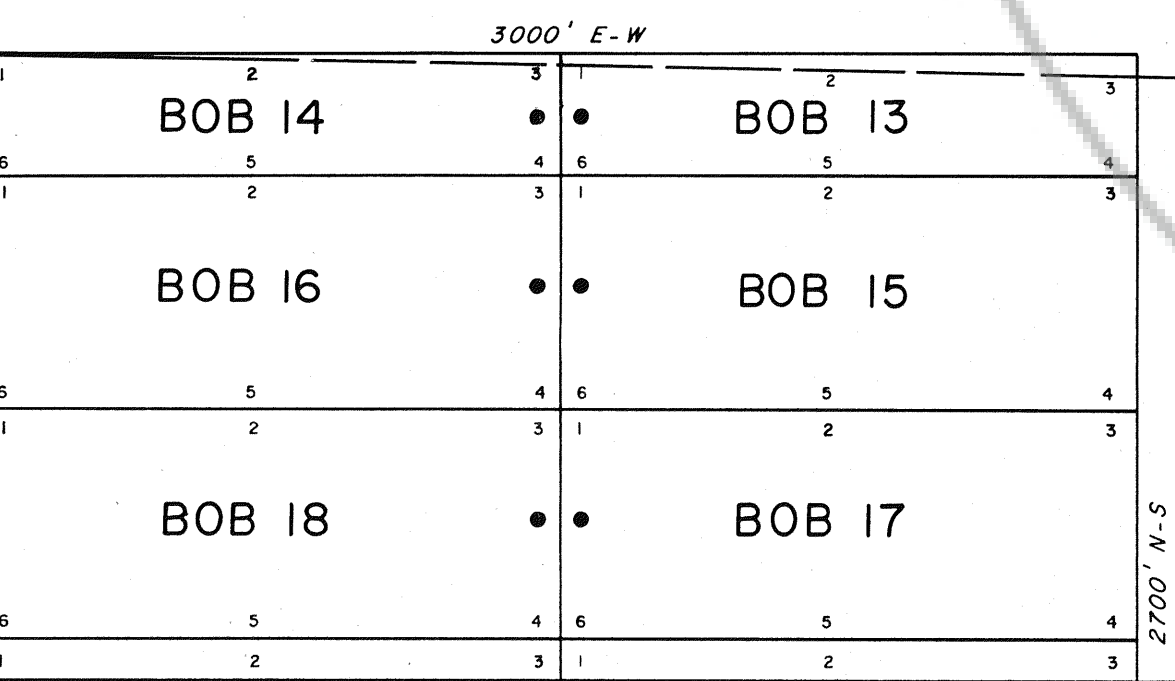
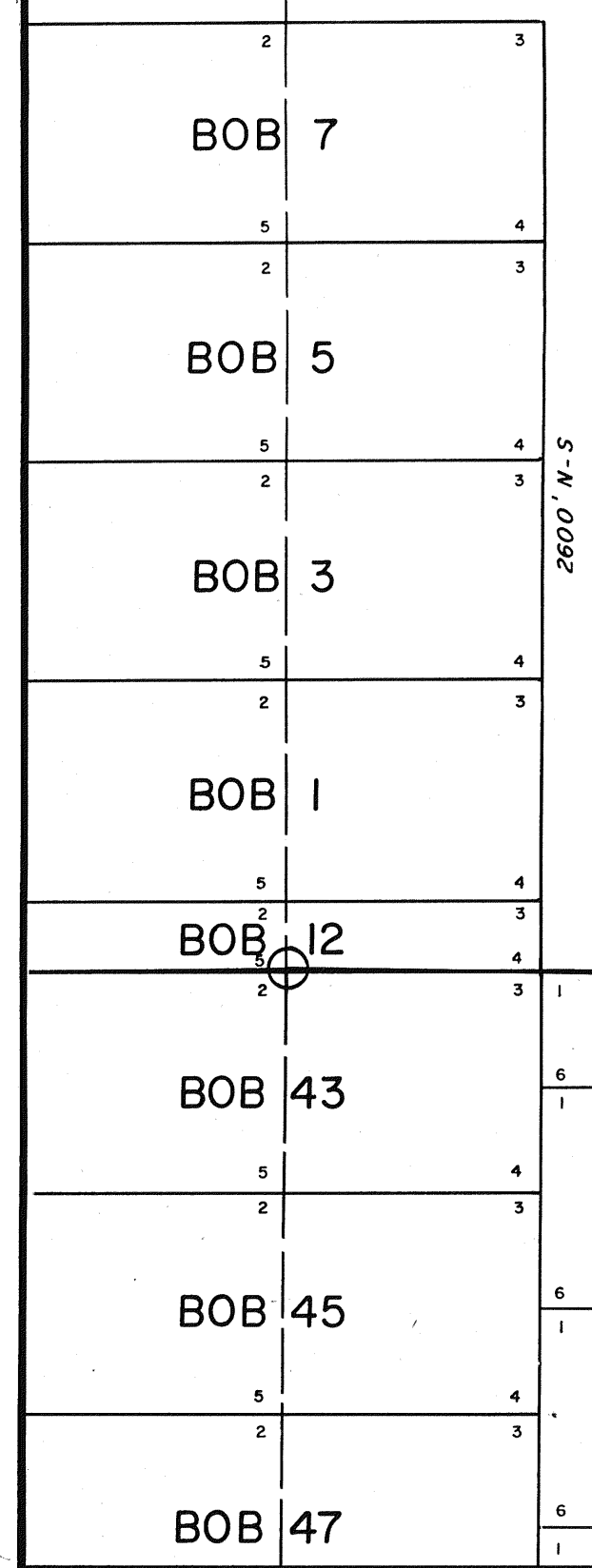
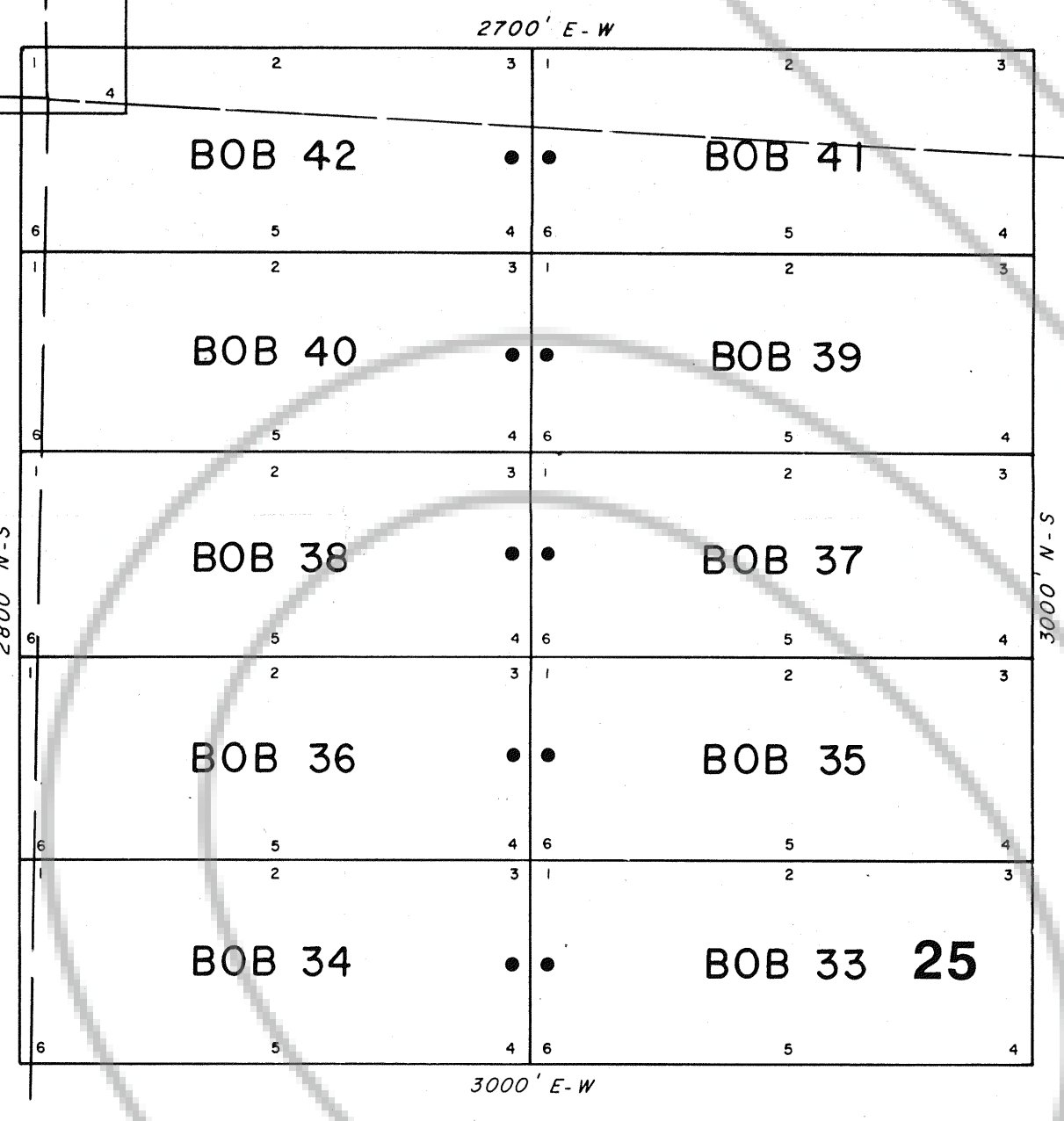
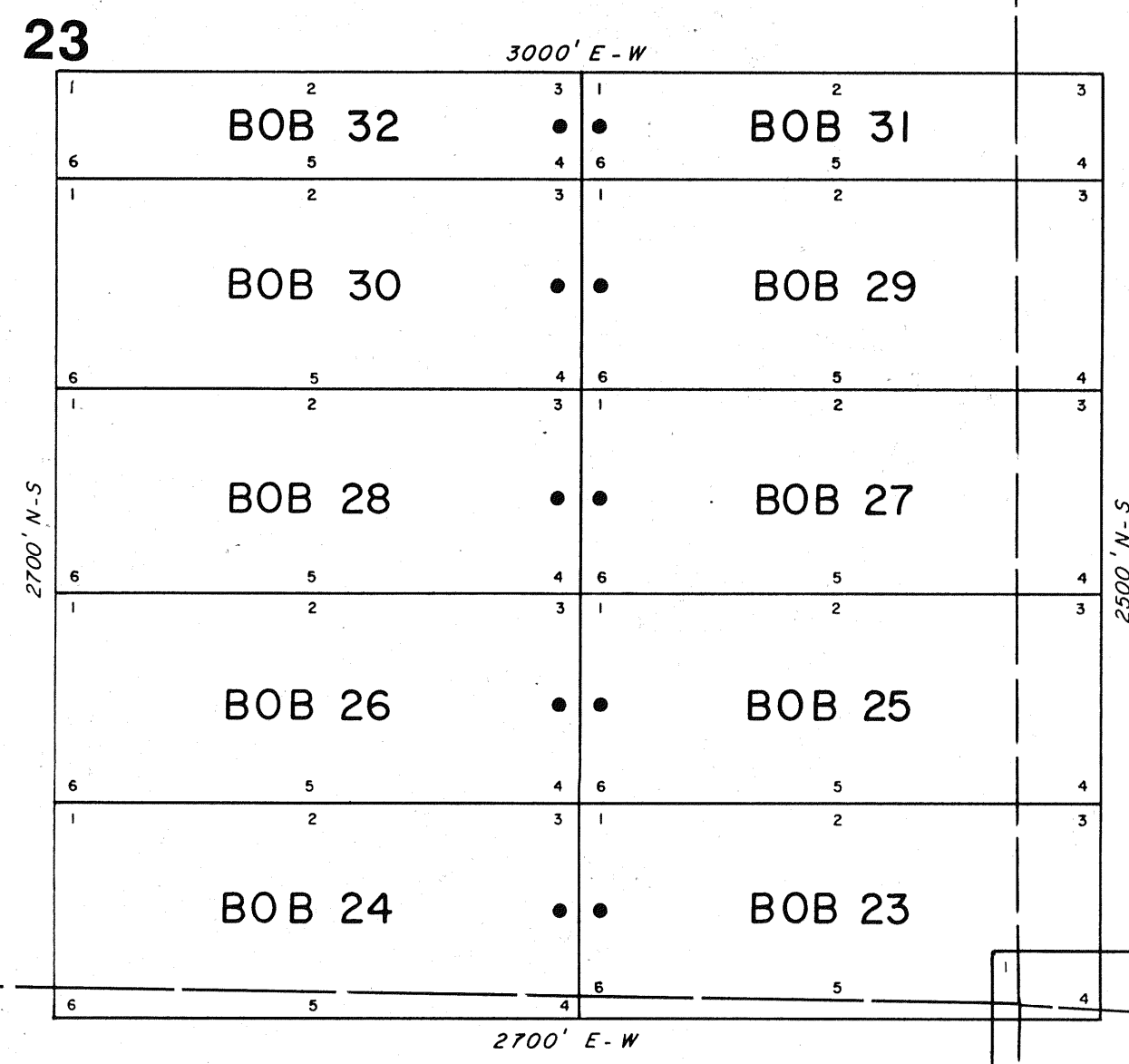
Eureka County, Nevada

Sections 26, 27, 33, 25, 36 T 32 N, R 49 E MDM
 (portions unsurveyed)

Date: 10-15-87

Drawn by: Ann Priestman

112857



T 32 N, R 49 E

26

24

19

30

LOCATOR:
 Aquarian Mining Exploration Inc. and D.P. Ward
 P.O. Box 67
 Crescent Valley, Nevada 89821

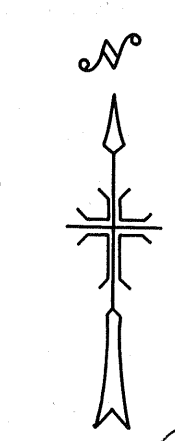
LOCATION DATES:
 September 15-20, 1987

BASIS OF CONTROL:
 Distance from NW corner section 35, T32N, R49E., MDM.
 to NW Bob # 23 is 4100' east and 5700' north

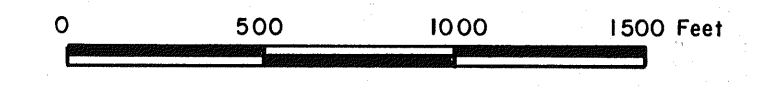
NOTES:
 All claims are 600' wide x 1500' long unless otherwise noted.

All discovery monuments are 50' from endlines unless otherwise noted.

• Discovery Monument



FILED AT THE REQUEST OF *Royal Gold, Inc.*
 on *Oct 13* 19 *87*, at *57* mins. *04* sec. *P.M.*
 RECORDS OF EUREKA COUNTY, NEVADA M. N. REBALEATI, Recorder
 File No. *112857* SCALE: 1"=500' Fee \$ *372.00*



**BOB 23-42
 LODGE MINING CLAIMS**

Eureka County, Nevada

Sections 23, 24, 25, 26 T 32 N, R 49 E MDM
 (portions unsurveyed)

Date: 10-15-87 Drawn by: Ann Priestman

112857