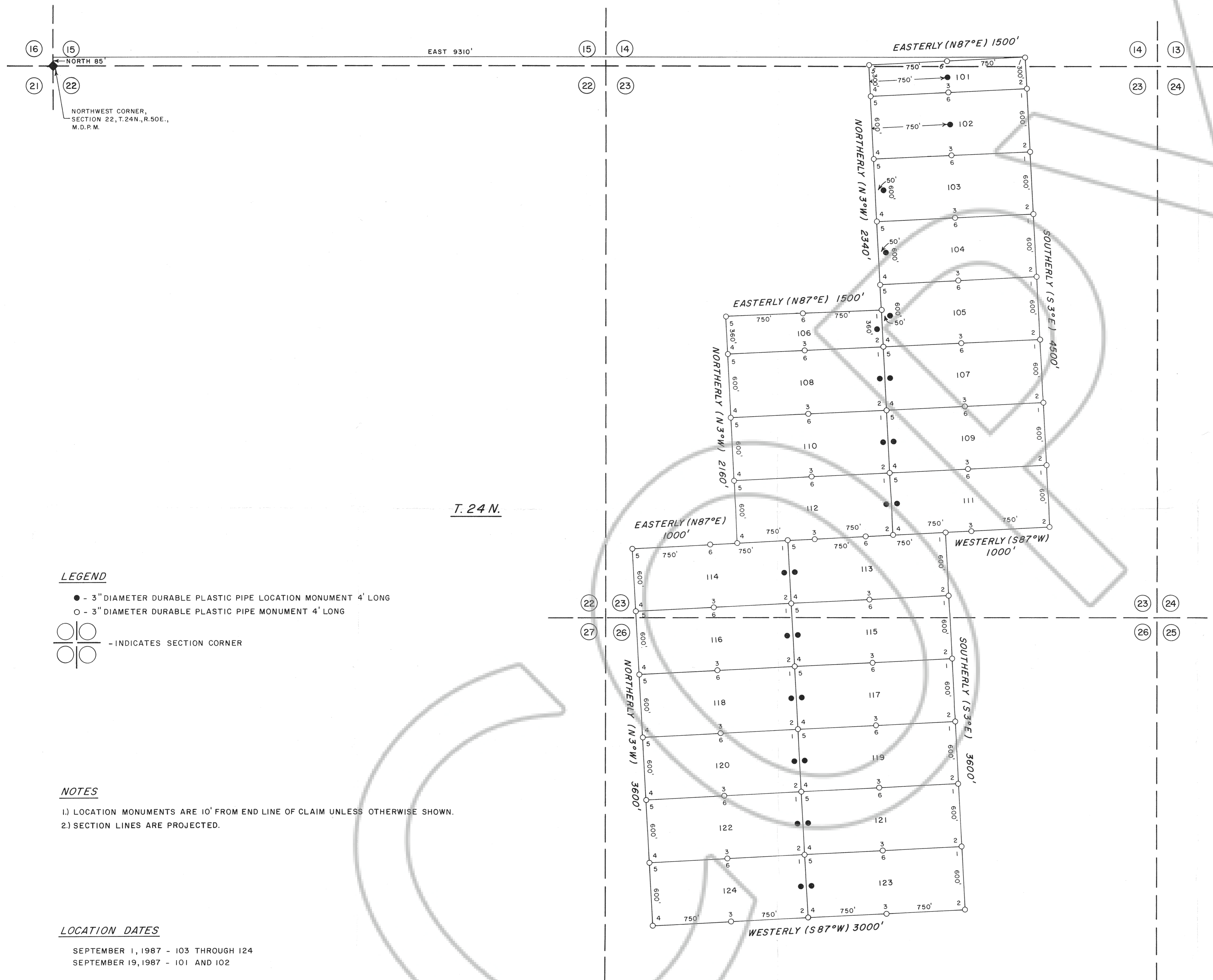
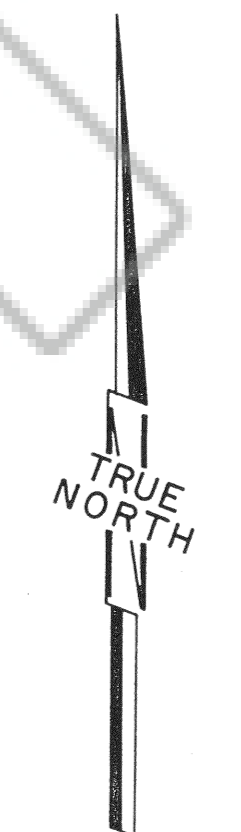


R. 50 E.



(16) (15)
 NORTH 85'
 EAST 9310'
 (21) (22)
 NORTHWEST CORNER,
 SECTION 22, T.24N., R.50E.,
 M.D.P.M.



SCALE - 1" = 500'

LEGEND

- - 3" DIAMETER DURABLE PLASTIC PIPE LOCATION MONUMENT 4' LONG
- - 3" DIAMETER DURABLE PLASTIC PIPE MONUMENT 4' LONG
- ⊕ ⊖ - INDICATES SECTION CORNER

NOTES

- 1.) LOCATION MONUMENTS ARE 10' FROM END LINE OF CLAIM UNLESS OTHERWISE SHOWN.
- 2.) SECTION LINES ARE PROJECTED.

LOCATION DATES

SEPTEMBER 1, 1987 - 103 THROUGH 124
 SEPTEMBER 19, 1987 - 101 AND 102

FILED AT THE REQUEST OF *Apex Surveying, Inc.*
 on *Nov 5* 19 *87* at *33* mins. *24* P.M.
 RECORDS OF EUREKA COUNTY, NEVADA M. N. REBALEATI, Recorder
 File No. *113624* Fee \$ *360.00*

MAP OF THE
MURPHY LODGE MINING CLAIMS
 EUREKA COUNTY, NEVADA
 LOCATED BY
 CHRIS BROILLI AND TERRY ZENK
ATLAS PRECIOUS METALS INC.
 P.O. BOX 1207
 MOAB, UTAH 84532
 OCTOBER 14, 1987
 APEX SURVEYING INC. RIVERTON, WY.