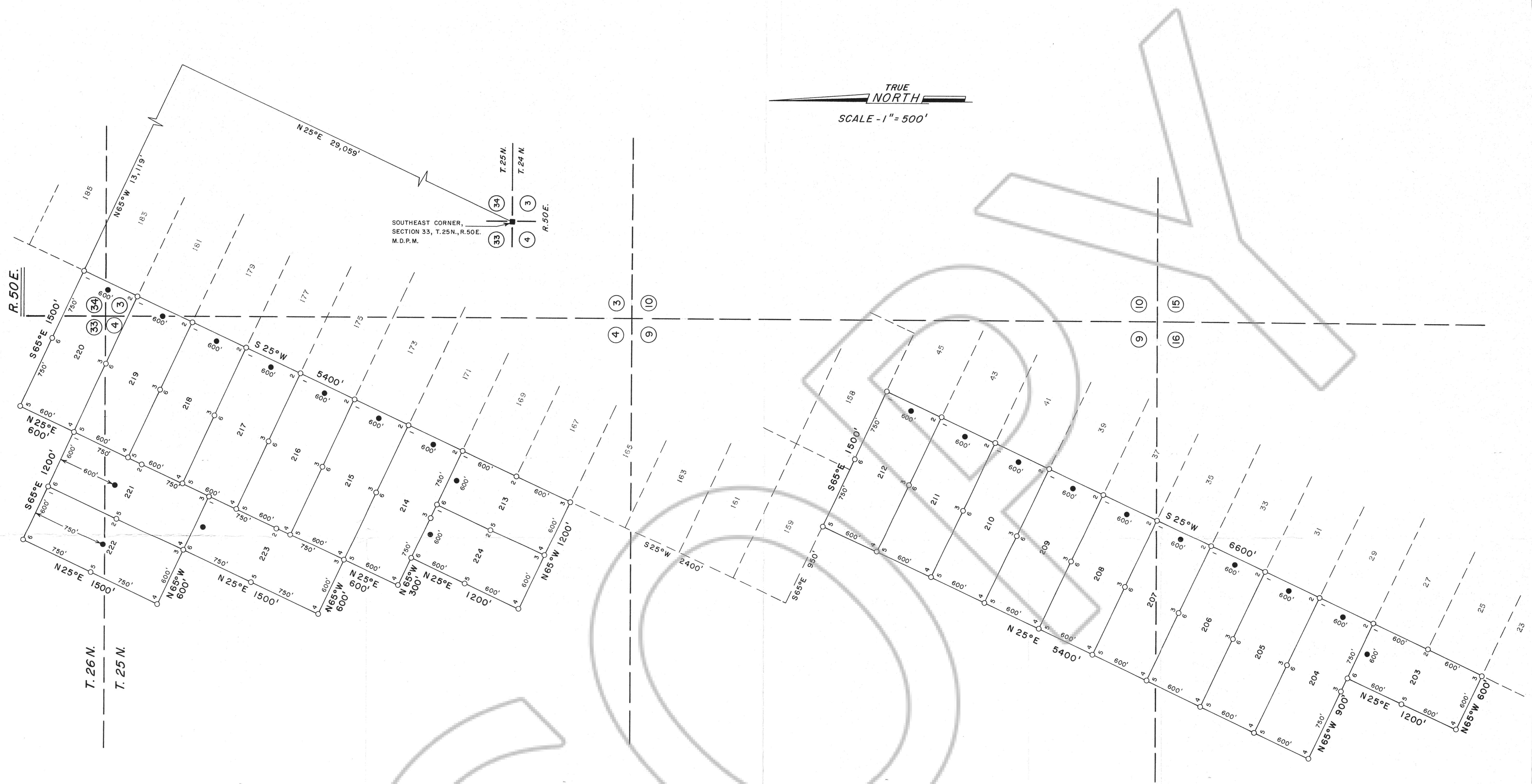
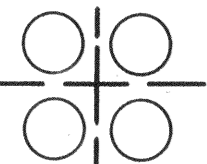


TRUE NORTH
SCALE - 1" = 500'

SOUTHEAST CORNER,
SECTION 33, T. 25N., R. 50E.
M.D.P.M.



LEGEND

- - 3" DIAMETER DURABLE PLASTIC PIPE LOCATION MONUMENT 4' LONG
- - 3" DIAMETER DURABLE PLASTIC PIPE MONUMENT 4' LONG
-  INDICATES SECTION CORNER

NOTES

- 1.) LOCATION MONUMENTS ARE 10' FROM END LINE OF CLAIM UNLESS OTHERWISE SHOWN.
- 2.) SECTION LINES ARE PROJECTED.

LOCATION DATES

- OCTOBER 10, 1987 - 203 THROUGH 221
- OCTOBER 12, 1987 - 222 THROUGH 224

FILED AT THE REQUEST OF *Apex Surveying, Inc.*
on *Nov 6* 19 *87* at *38* mins, *11 A.M.*
RECORDS OF EUREKA COUNTY, NEVADA M. N. REBALEATI, Recorder
File No. *113633* Fee \$ *75.00*

MAP OF THE
NORTH LODGE MINING CLAIMS
EUREKA COUNTY, NEVADA

LOCATED BY: TERRY ZENK
AGENT FOR
ATLAS PRECIOUS METALS INC.
P.O. BOX 1207
MOAB, UTAH 84532

OCTOBER 21, 1987

APEX SURVEYING INC. RIVERTON, WYOMING