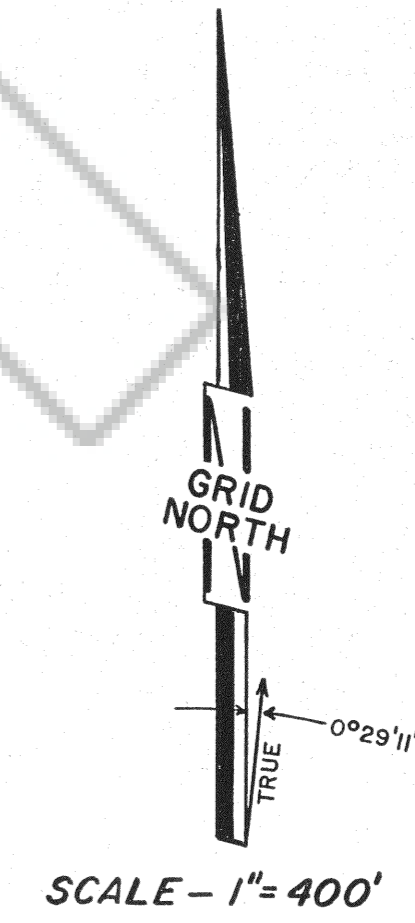
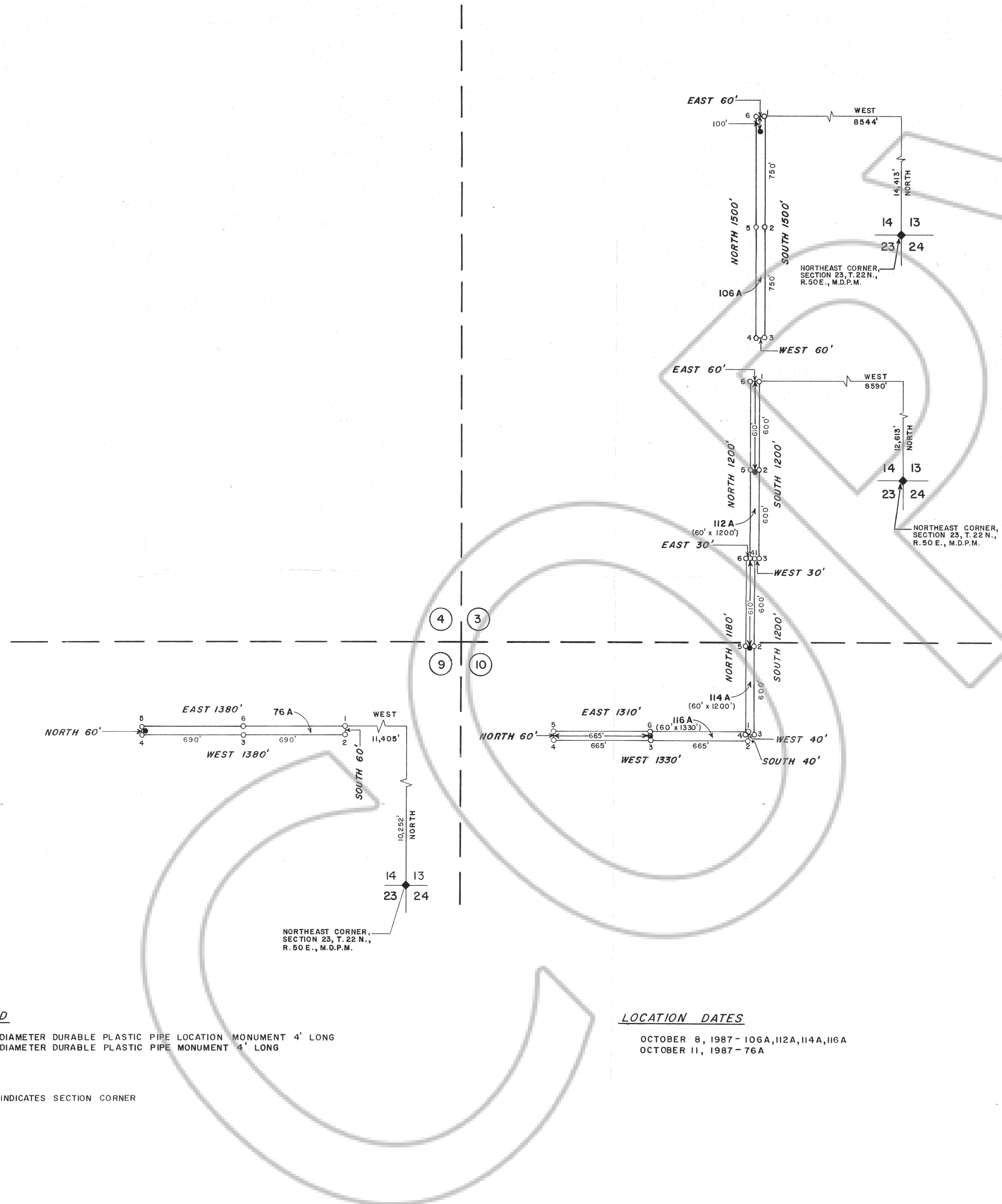


R. 50 E.

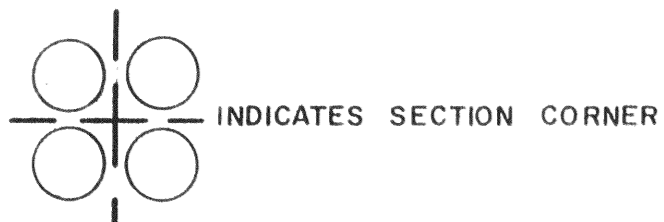
T. 22 N.



- NOTE**
- 1) LOCATION MONUMENTS ARE 10' FROM END LINE OF CLAIM UNLESS OTHERWISE INDICATED.
 - 2) SECTION LINES ARE PROJECTED.
 - 3) TIE BEARINGS SHOWN ARE GRID AND REFERENCED TO THE NEVADA STATE PLANE COORDINATE SYSTEM, EAST ZONE (DISTANCES SHOWN ARE SURFACE, NOT SEA LEVEL).

LEGEND

- - 3" DIAMETER DURABLE PLASTIC PIPE LOCATION MONUMENT 4' LONG
- - 3" DIAMETER DURABLE PLASTIC PIPE MONUMENT 4' LONG



LOCATION DATES

OCTOBER 8, 1987 - 106A, 112A, 114A, 116A
 OCTOBER 11, 1987 - 76A

FILED BY THE REQUEST OF: *Apex Surveying, Inc.*
 ON: *Nov. 6, 1987* at *6* MINS. DIST. *1/2* M.
 RECORDS OF EUREKA COUNTY, NEVADA. M. N. REBALEATI, Recorder
 File No. *113656* Fee \$ *330.00*

113656

MAP OF THE
WI LODE MINING CLAIMS
 EUREKA COUNTY, NEVADA

LOCATED BY: TERRY A. ZENK
 AGENT FOR
ATLAS PRECIOUS METALS INC.
 P.O. BOX 1207
 MOAB, UTAH 84532
 OCTOBER 26, 1987

APEX SURVEYING, INC. RIVERTON, WYOMING