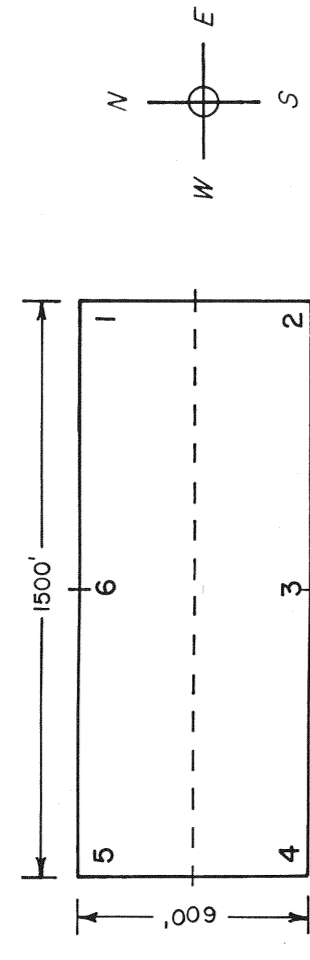


Typical Claim



Discovery monument 10 ft. from end - center

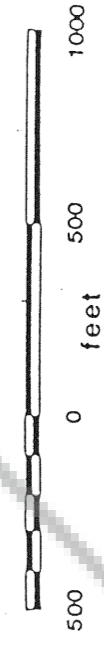
PIG 116 & PIG 117 are contiguous with PIG 118 & PIG 119, respectively (see Sheet 1).

PIG 116	∞	PIG 117
PIG 114	∞	PIG 115
PIG 112	∞	PIG 113
PIG 110	∞	PIG 111
PIG 108	∞	PIG 109
PIG 106	∞	PIG 107
PIG 104	∞	PIG 105
PIG 102	∞	PIG 103
PIG 100	∞	PIG 101

Post 2 of PIG 102 located 1925', bearing S 21° W from intersection of corners of surveyed Sects. 29, 30, 31 & 32, T. 28 N. - R. 48 E.

Lander County Eureka County

PIG claim nos. 100 - 125, 128 - 137, & 200 - 208 located 9 / 7 / 87.

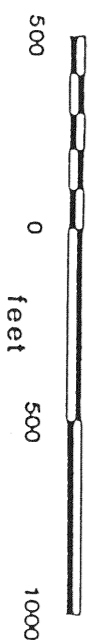
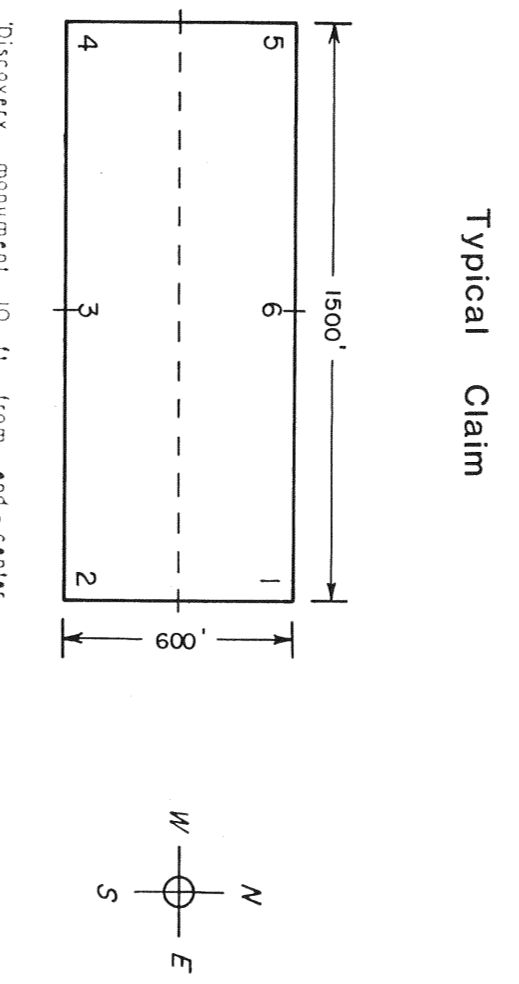
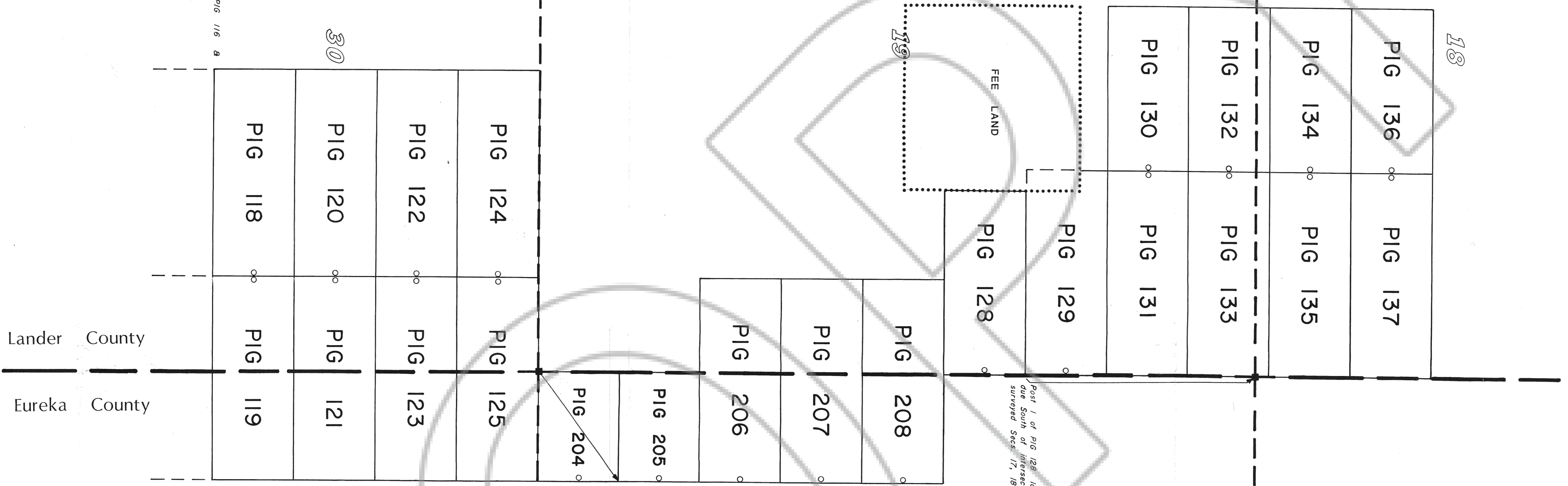


FILED AT THE REQUEST OF *Resource Assoc. of Alaska, Inc.*  
 on *Nov. 30, 19 87* at *114* miles, Post *2* of *102*,  
 RECORDS OF EUREKA COUNTY, NEVADA, IN THE REBALANCE RECORDS  
 File No. ~~314781~~ Fee \$ ~~225.00~~

SHEET NO. 2	<b>RESOURCE ASSOCIATES OF ALASKA, INC.</b> 8100 NE PARKWAY DR. VANCOUVER, WASHINGTON 98662
SCALE 1 in. = 500 ft.	
DRAFTED BY: K.V.R., 9-1-87	<b>PIG Lode Claim Block</b> T. 28 N. - R. 48 E. Secs. 18, 19, 20, 28, 30, 31, 32 Lander - Eureka Counties, Nevada
REVISED:	

PIG claim nos. 100 - 125, 128 - 137, & 200 - 208 located 9/7/87.

PIG 118 & PIG 119 are contiguous with PIG 116 & PIG 117, respectively (see Sheet 2).



FILED AT THE REQUEST OF *Resource Associates of Alaska, Inc.*  
 on Nov 30 19 87 at 547 North East 9th St.  
 RECORDS OF EUREKA, NEVADA, WASHINGTON - 98662  
 Fee \$ 35.00

SHEET NO.	1
SCALE	1 in. = 500 ft.
DRAFTED BY	K.V.R., 9-7-87
REVISION	
<b>RESOURCE ASSOCIATES OF ALASKA, INC.</b>	
8100 NE PARKWAY DR. VANCOUVER, WASHINGTON 98662	
<b>PIG Lode Claim Block</b>	
T 28 N - R 48 E, Secs. 18, 19, 20, 29, 30, 31, 32 Lander - Eureka Counties, Nevada	