

BASIS OF BEARINGS:

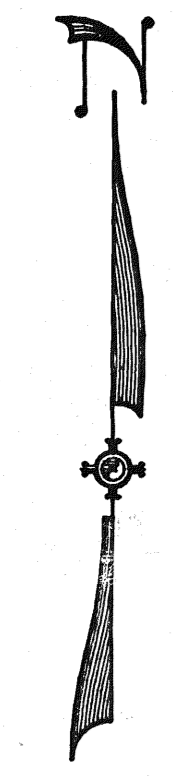
THE LINE BETWEEN THE SOUTHWEST CORNER AND THE WEST 1/4 CORNER OF SECTION 18, TOWNSHIP 36 NORTH, RANGE 50 EAST, M.D.B. & M., TAKEN AS NORTH 00° 01' 25" EAST.

LEGEND:

- ⊗ — FOUND B.L.M. BRASS CAP AT SECTION CORNER
- ◊ — FOUND B.L.M. BRASS CAP AT 1/4 SECTION CORNER
- — SET 4"x4" WOOD POST WITH LOCATION NOTICE SET 5/8" REBAR WITH SUMMIT ENGINEERING CORPORATION CAP 2 FEET EAST OF WOOD POST
- — SET 4"x4" WOOD POST WITH ALUMINUM TAG SET 5/8" REBAR WITH SUMMIT ENGINEERING CORPORATION CAP 2 FEET EAST OF WOOD POST
- H — HILL LODE MINING CLAIM
- R — ROYAL LODE MINING CLAIM

DATES OF LOCATION:

CLAIM NAME AND NO.	DATE OF LOCATION	DATE MONUMENTATION COMPLETED
HILL 1 - 5	SEPT. 3, 1987	OCT. 9, 1987
HILL 6 - 8	SEPT. 12, 1987	OCT. 9, 1987
HILL 9 - 13	SEPT. 22, 1987	OCT. 9, 1987
HILL 14 - 17	SEPT. 27, 1987	OCT. 9, 1987
HILL 18 - 22	SEPT. 22, 1987	OCT. 9, 1987
HILL 23 - 25	SEPT. 12, 1987	OCT. 9, 1987
HILL 26	SEPT. 4, 1987	OCT. 9, 1987
HILL 27 - 30	SEPT. 3, 1987	OCT. 9, 1987
HILL 31 - 38	SEPT. 18, 1987	OCT. 9, 1987
HILL 39 - 44	SEPT. 12, 1987	OCT. 9, 1987
HILL 45F	OCT. 1, 1987	OCT. 9, 1987
HILL 46F - 47F	OCT. 6, 1987	OCT. 9, 1987
HILL 48F	SEPT. 12, 1987	OCT. 9, 1987
HILL 49F - 50F	SEPT. 27, 1987	OCT. 9, 1987
HILL 51F	SEPT. 21, 1987	OCT. 9, 1987
HILL 52F - 53F	SEPT. 2, 1987	OCT. 9, 1987
ROYAL 1	OCT. 7, 1987	OCT. 9, 1987
ROYAL 2 - 3	SEPT. 12, 1987	OCT. 9, 1987
ROYAL 4F	OCT. 7, 1987	OCT. 9, 1987
ROYAL 5 - 11	SEPT. 12, 1987	OCT. 9, 1987
ROYAL 12F	OCT. 7, 1987	OCT. 9, 1987
ROYAL 13F - 15F	OCT. 6, 1987	OCT. 9, 1987



1" = 500'

LINE	BEARING	DISTANCE
L1	N 01° 02' 25" W	400.00'
L2	N 01° 02' 25" W	200.00'
L3	N 01° 02' 25" W	150

NOTE:
THE ELKO COUNTY AND EUREKA COUNTY LINE WAS PROTRACTED FROM USGS QUADRANGLE MAPS

THIS IS AT THE REQUEST OF Barrick Goldstrike
Nov 30, 1987, at 37 mins, past 10 P.M.
 RECORDS OF EUREKA COUNTY, NEVADA, M. N. REBALEATI, Recorder
 File No. 11876 Fee \$ 615.00

FILE NO. _____
 Filed at the request of _____
 Date _____, 19____
 Time _____ M.
 Eureka County Recorder

11876

MAP OF HILL AND ROYAL LODE MINING CLAIMS

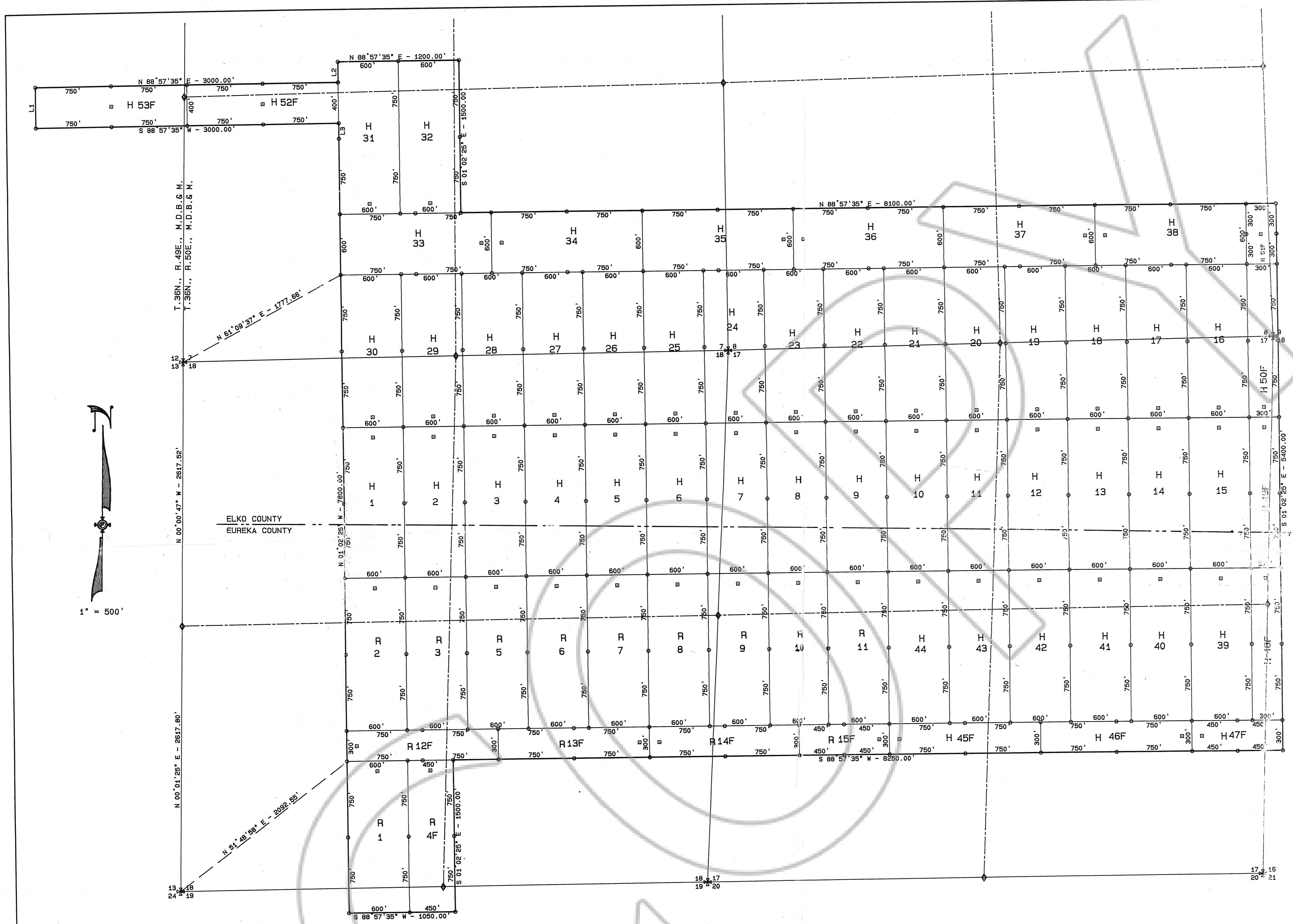
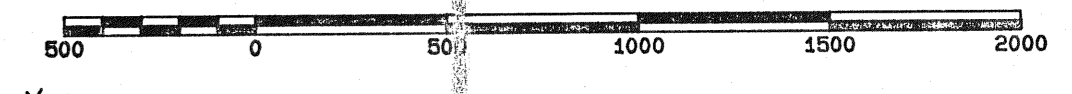
LOCATED BY WESTERN STATES MINERALS JV-1
 P.O. BOX 29 ELKO, NV. 89801
 PROPRIETOR OF THE GOLDSTRIKE MINE

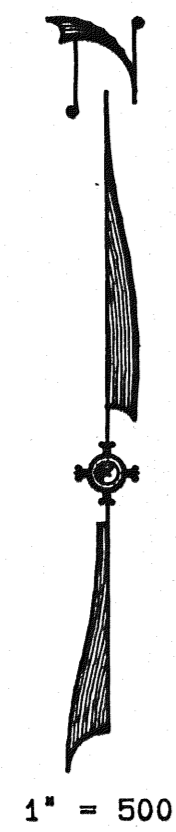
LOCATED SEPTEMBER 2, 1987 THRU NOVEMBER 4, 1987 IN
 SECTIONS 7, 8, 9, 15, 17, 18, & 19 T.36 N., R.50 E. M.D.B. & M.

ELKO & EUREKA COUNTIES, NEVADA

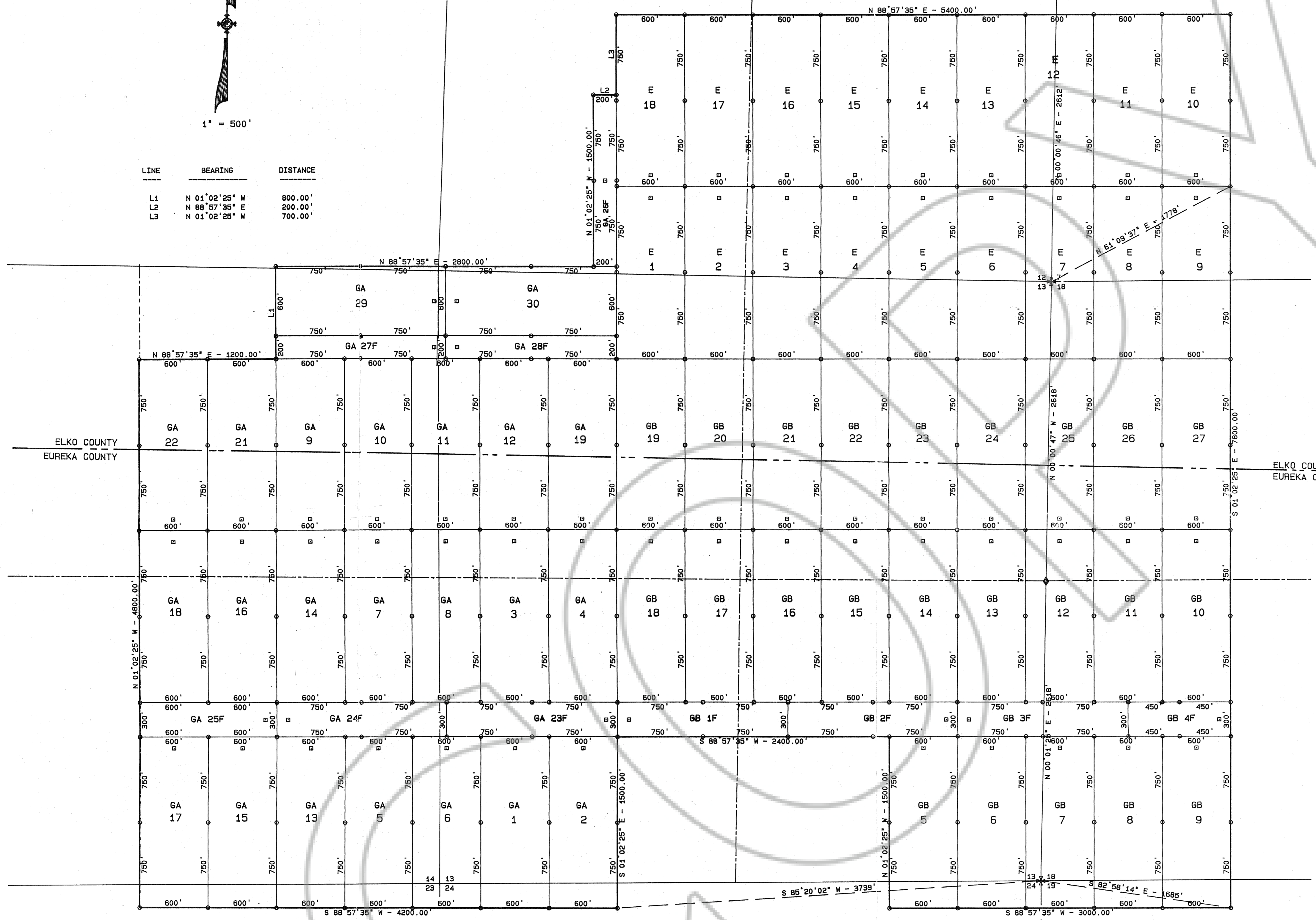
SUMMIT ENGINEERING CORPORATION
 CONSULTING ENGINEERS AND SURVEYORS
 22 FIFTH STREET
 ELKO, NEVADA 89801 (702) 738-8058

SHEET 1 OF 1





LINE	BEARING	DISTANCE
L1	N 01° 02' 25" W	800.00'
L2	N 88° 57' 35" E	200.00'
L3	N 01° 02' 25" W	700.00'



BASIS OF BEARINGS:

THE LINE BETWEEN THE SOUTHWEST CORNER AND THE WEST 1/4 CORNER OF SECTION 18, TOWNSHIP 36 NORTH, RANGE 50 EAST, M.D.B. & M., TAKEN AS NORTH 00° 01' 25" EAST.

LEGEND:

- ⊗ — FOUND B.L.M. BRASS CAP AT SECTION CORNER
- ⊠ — FOUND B.L.M. BRASS CAP AT 1/4 SECTION CORNER
- — SET 4"x4" WOOD POST WITH LOCATION NOTICE SET 5/8" REBAR WITH SUMMIT ENGINEERING CORPORATION CAP 2 FEET EAST OF WOOD POST
- — SET 4"x4" WOOD POST WITH ALUMINUM TAG SET 5/8" REBAR WITH SUMMIT ENGINEERING CORPORATION CAP 2 FEET EAST OF WOOD POST
- E — EXTENSION LODE MINING CLAIM
- GB — GOLD BUG LODE MINING CLAIM
- GA — GOLD APRIL LODE MINING CLAIM

DATES OF LOCATION:

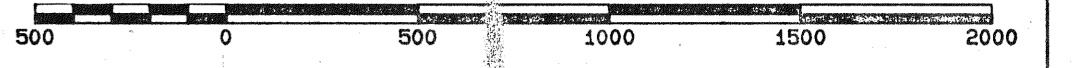
CLAIM NAME AND NO.	DATE OF LOCATION	DATE MONUMENTATION COMPLETED
EXTENSION 1-18	SEPT. 2, 1987	SEPT. 1, 1987
GOLD BUG 1F-4F	OCT. 13, 1987	NOV. 3, 1987
GOLD BUG 5-7	OCT. 13, 1987	NOV. 3, 1987
GOLD BUG 8-27	OCT. 9, 1987	NOV. 3, 1987
GOLDEN APRIL 1	OCT. 15, 1987	NOV. 3, 1987
GOLDEN APRIL 2	OCT. 13, 1987	NOV. 3, 1987
GOLDEN APRIL 3-4	OCT. 16, 1987	NOV. 3, 1987
GOLDEN APRIL 5-6	OCT. 15, 1987	NOV. 3, 1987
GOLDEN APRIL 7-12	OCT. 16, 1987	NOV. 3, 1987
GOLDEN APRIL 13	OCT. 15, 1987	NOV. 3, 1987
GOLDEN APRIL 14	OCT. 16, 1987	NOV. 3, 1987
GOLDEN APRIL 15	OCT. 15, 1987	NOV. 3, 1987
GOLDEN APRIL 16	OCT. 19, 1987	NOV. 3, 1987
GOLDEN APRIL 17	OCT. 15, 1987	NOV. 3, 1987
GOLDEN APRIL 18	OCT. 19, 1987	NOV. 3, 1987
GOLDEN APRIL 19	OCT. 16, 1987	NOV. 3, 1987
GOLDEN APRIL 21-22	OCT. 19, 1987	NOV. 3, 1987
GOLDEN APRIL 23F	OCT. 13, 1987	NOV. 3, 1987
GOLDEN APRIL 24F-25F	OCT. 15, 1987	NOV. 3, 1987
GOLDEN APRIL 26F-28F	NOV. 4, 1987	NOV. 4, 1987
GOLDEN APRIL 29-30	NOV. 4, 1987	NOV. 4, 1987

NOTE:
THE ELKO COUNTY AND EUREKA COUNTY LINE WAS PROTRACTED FROM USGS QUADRANGLE MAPS

NOTE:
THE BOUNDARY LINES OF SECTIONS 12, 13, 14, 23, & 24 T.36N., R.49E., M.D.B. & M. WERE PROTRACTED FROM TOWNSHIP PLATS

FILED AT THE REQUEST OF *Barrick Goldstrike*
IN *Nov 30 1987* AT *3:37* P.M. EAST OF
RECORDS OF EUREKA COUNTY, NEVADA M.N. REBALEATI, RECORDER
#24 No. *134075* Fee \$ *765.00*

FILED NO. _____
Filed at the request of _____
Date _____ 19____
Time _____ M.
Eureka County Recorder



MAP OF
EXTENSION, GOLD BUG, AND GOLDEN APRIL
LODE MINING CLAIMS

LOCATED BY WESTERN STATES MINERALS JV-1
P.O. BOX 29 ELKO, NV. 89801
PROPRIETOR OF THE GOLDSTRIKE MINE

LOCATED SEPTEMBER 2, 1987 THRU NOVEMBER 4, 1987 IN
SECTIONS 7, 8 & 9, T.36 N., R.50 E.
AND SECTIONS 11, 12, 13, 14, 23 & 24 T.36 N., R.49 E., M.D.B. & M.
LYNN MINING DISTRICT ELKO & EUREKA COUNTIES, NEVADA

SUMMIT ENGINEERING CORPORATION
CONSULTING ENGINEERS AND SURVEYORS
572 FIFTH STREET
ELKO, NEVADA 89801 (702) 735-8058

SHEET 1 OF 1

27
24
51