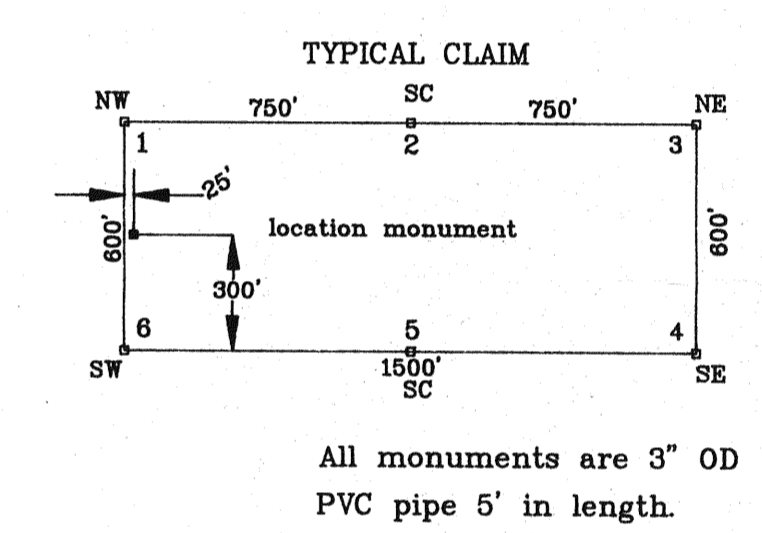
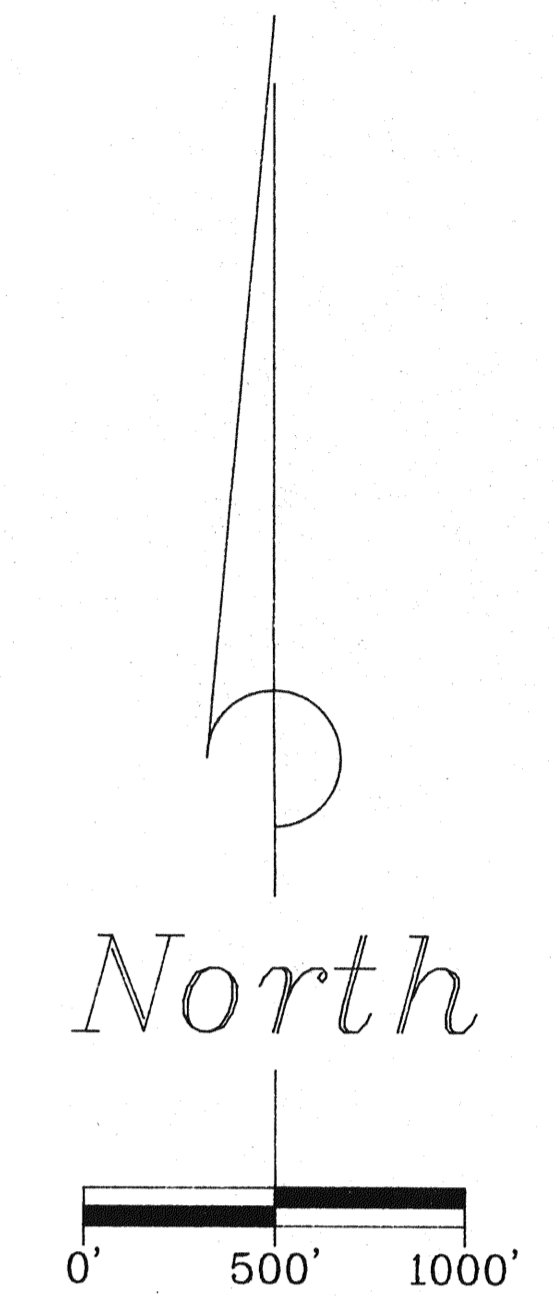
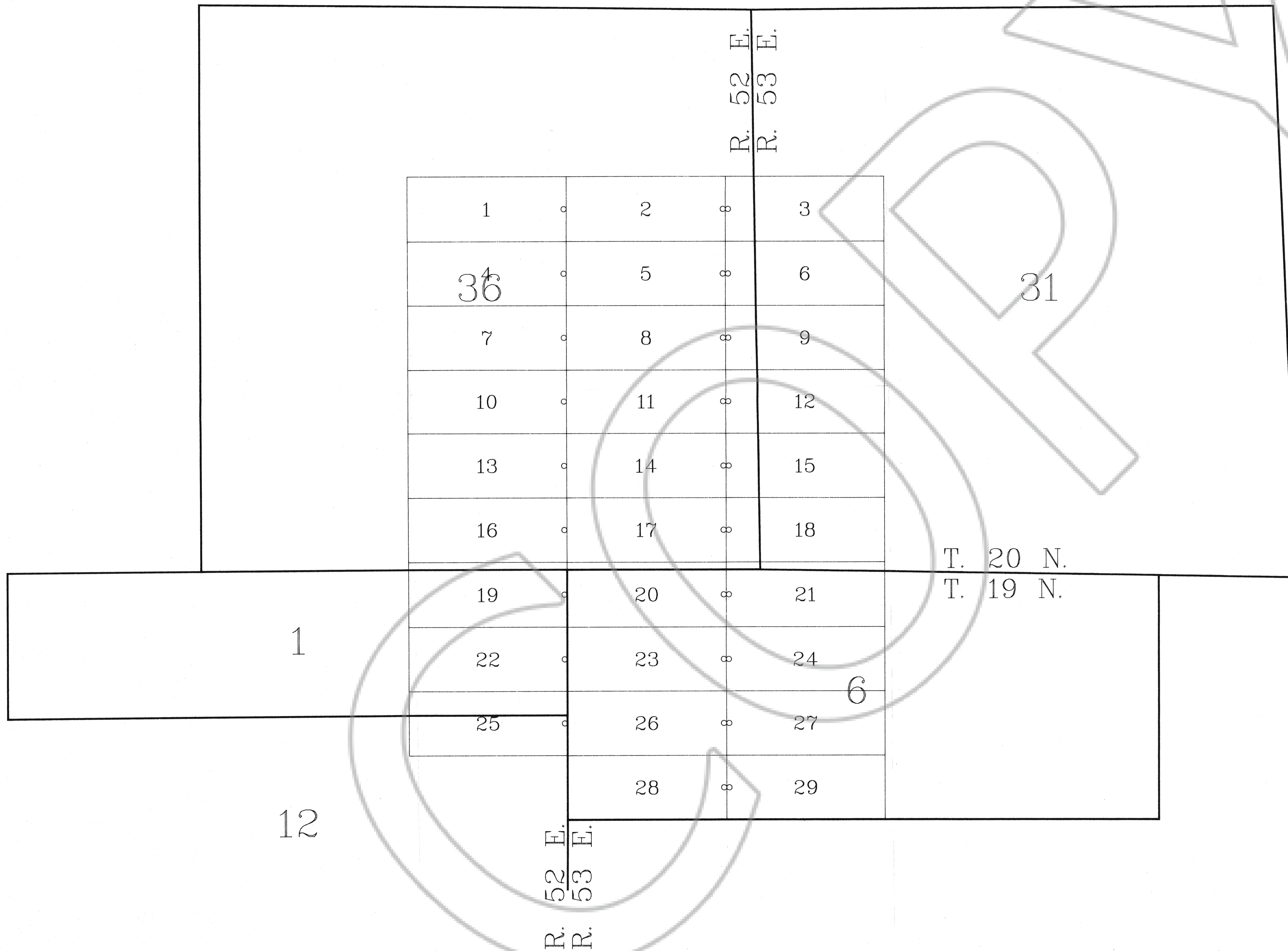


A MAP OF THE LSI LODE CLAIMS  
Tps. 19 & 20 N., Rs. 52 & 53 E., M.D.M.  
EUREKA COUNTY, NEVADA



FILED AT THE REQUEST OF *Echo Bay Explorations, Inc.*  
on *Dec 14* 19 *87*, at *37* mins, past *11* A.M.,  
RECORDS OF EUREKA COUNTY, NEVADA M. N. REBALEATI, Recorder  
File No. *115048* Fee \$ *232.00*

DATE OF LOCATION:  
LS 1, 4, 7, 10, 13, 16, 19, 22 and 25 on October 14, 1987.  
LS 2, 3, 5, 6, 8, 9, 11, 12, 14, 15, 17, 18, 20, 21, 23, 24, 26, 27,  
28 and 29 on October 15, 1987.

TIE: The Southwest corner of LS 28 is common with the Southwest corner of Section 6, T. 19 N., R. 53 E., M.D.M.

NOTE: All section lines are projected.

BASIS OF BEARING:  
The West line of Section 6, T. 19 N., R. 53 E., M.D.M. is assumed to bear North and South.

		ECHO BAY EXPLORATION INC.	
		5250 NEIL ROAD, SUITE 300 RENO, NEVADA 89502	
D.H.			
D.H.	1"=500'	J87-02H	1 OF 1