

LOCATORS CERTIFICATE FOR FIELD NOTES & RECORD OF
SURVEY PURSUANT TO N.R.S. 517.210

ROBERT N. CALDWELL, the undersigned, being Registered Land Surveyor No. 4233 of the State of Nevada hereby certifies that this map fully and accurately delineates a survey actually made by him, or under his direction between the 5th day of Oct. 1987 and the 8th day of Dec. 1987; that the names of the claims surveyed and their respective locations are as set forth on the map and as described in the field notes of this survey (which field notes are hereby by reference incorporated herein) and that the description incorporated in said field notes, and as portrayed on this map are sufficient to identify and fix the position of the claims on the ground.

ROBERT N. CALDWELL
Registered Land Surveyor No. 4233
12-15-87

- NOTES
- Indicates a claim boundary monument set this survey, a 3"x5" PVC post marked for the appropriate corner number with a metal tag wired to the post.
 - LM Indicates a claim location monument a 3"x5" PVC post marked for the appropriate claim location name with a metal tag wired to the post and a plastic bottle with the notice of location inside. All claim location monuments are set 5' from the end line unless otherwise noted.
 - ◇ Indicates found Section corner a GLO Brass Cap as noted.
 - ◆ Indicates found 1/4 Section corner a GLO Brass Cap as noted.

Basis of Bearings: The section line between the NE corner and the E 1/4 corner of Section 8, T.32N., R.49E., M.D.B.&M. being south.

LOCATOR:

ORION LTD.
146 West 2nd Street
Winnemucca, NV. 89445

LOCATION DATES:

ORION No. 199 thru 202 & 209 were located on 10-7-87.
ORION No. 205 thru 208 were located on 10-5-87.
ORION No. 203 & 204 were located on 12-8-87.
ORION No. 210 & 211 were located on 11-14-87.

SCALE: 1"=500'



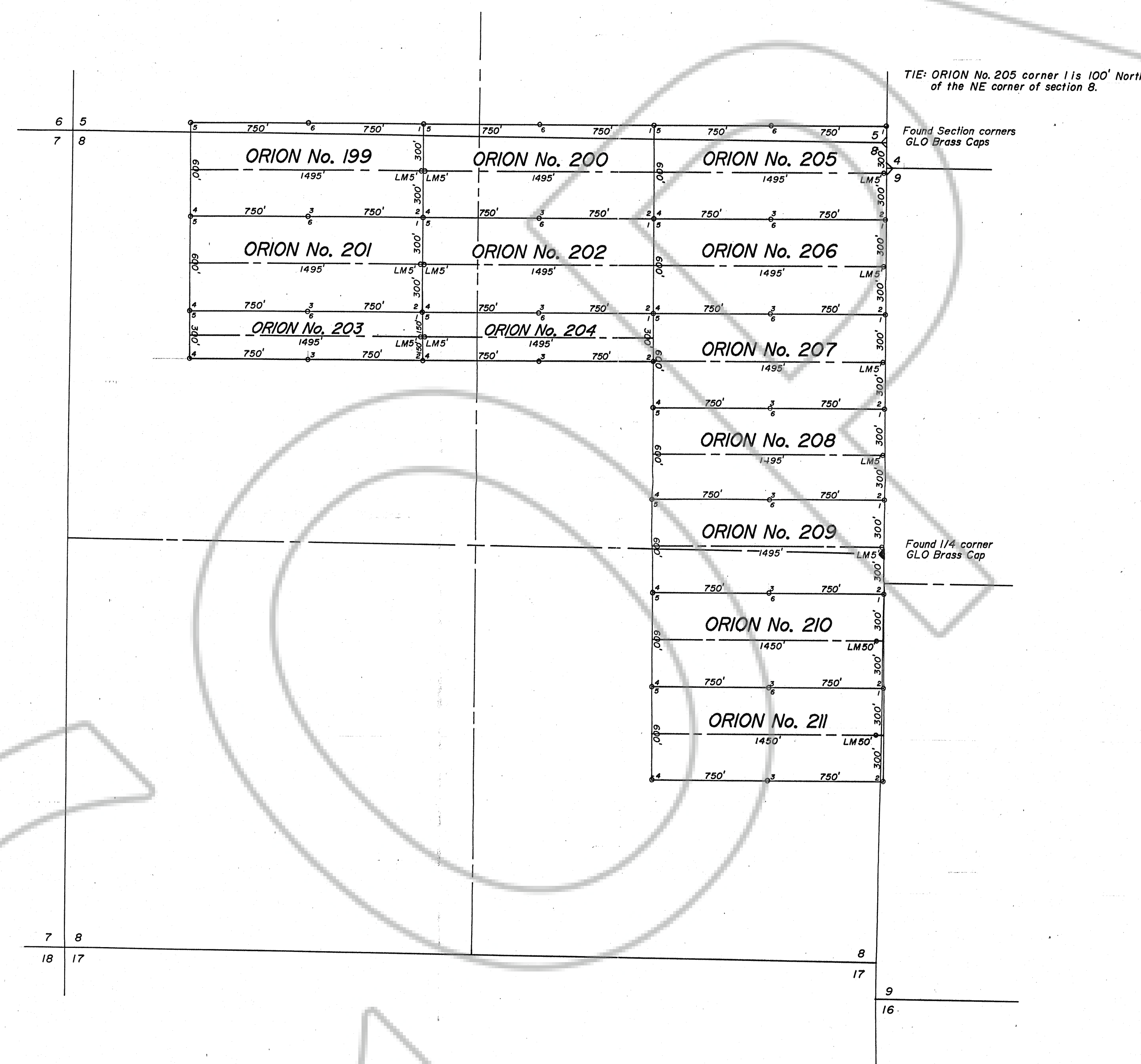
FILED AT THE REQUEST OF Desert Mountain Inc.
ON 12-31-87 BY 16 32 M.
RECORDS OF EUREKA COUNTY, NEVADA BY EUREKA COUNTY RECORDER
File No. 115470 Fee \$ 125.00

MAP OF
ORION LODE CLAIMS
FOR

ORION LTD.

WITHIN SECTION 8, T.32N., R.49E.
M.D.B.&M.
EUREKA COUNTY, NEVADA

Desert-Mountain Inc.
Land Surveyors
146 West Second Street
Winnemucca, Nevada 89445
702 623-4414



T.32N., R.49E.
M.D.B.&M.