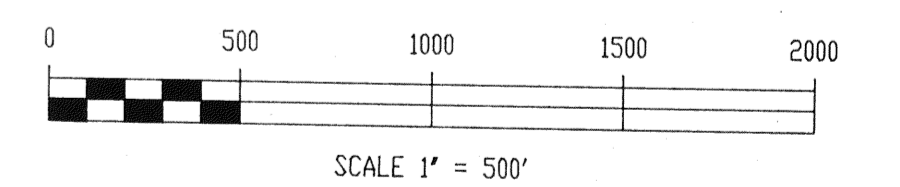


SEC. COR. FOUND: Rock monument,  
common to Cor. 5 of HSP No. 36.

T. 30 N., R. 49 E., M.D.B. & M.

- NOTES:
1. All claims are 590' wide x 1480' long with Discovery Monuments 10' from end lines, except as shown and noted.
  2. At all Corners, Side Centers and Discovery Monuments are 3" diameter x 5' long posts with aluminum tags denoting the appropriate corners.
  3. ○ = Corner and Side Center posts.  
● = Discovery Monuments.
  4. These claims are located by : Santa Fe Pacific Mining, Inc.  
250 South Rock Blvd., Suite 100  
Reno, Nevada 89502
  5. HSP No. 1 thru 36 located on November 25, 1987.
  6. There is a total of 36 claims shown on this sheet.

RECORDED AT THE REQUEST OF *Santa Fe Pacific Mining, Inc.*  
on *Feb 11*, 19*88* at *49* mins. past *9:00* A.M. in  
book \_\_\_\_\_ of OFFICIAL RECORDS, page \_\_\_\_\_, RECORDS OF  
EUREKA COUNTY, NEVADA. M.N. REBALEATI, Recorder  
File No. **116076** Fee \$ *520.00*

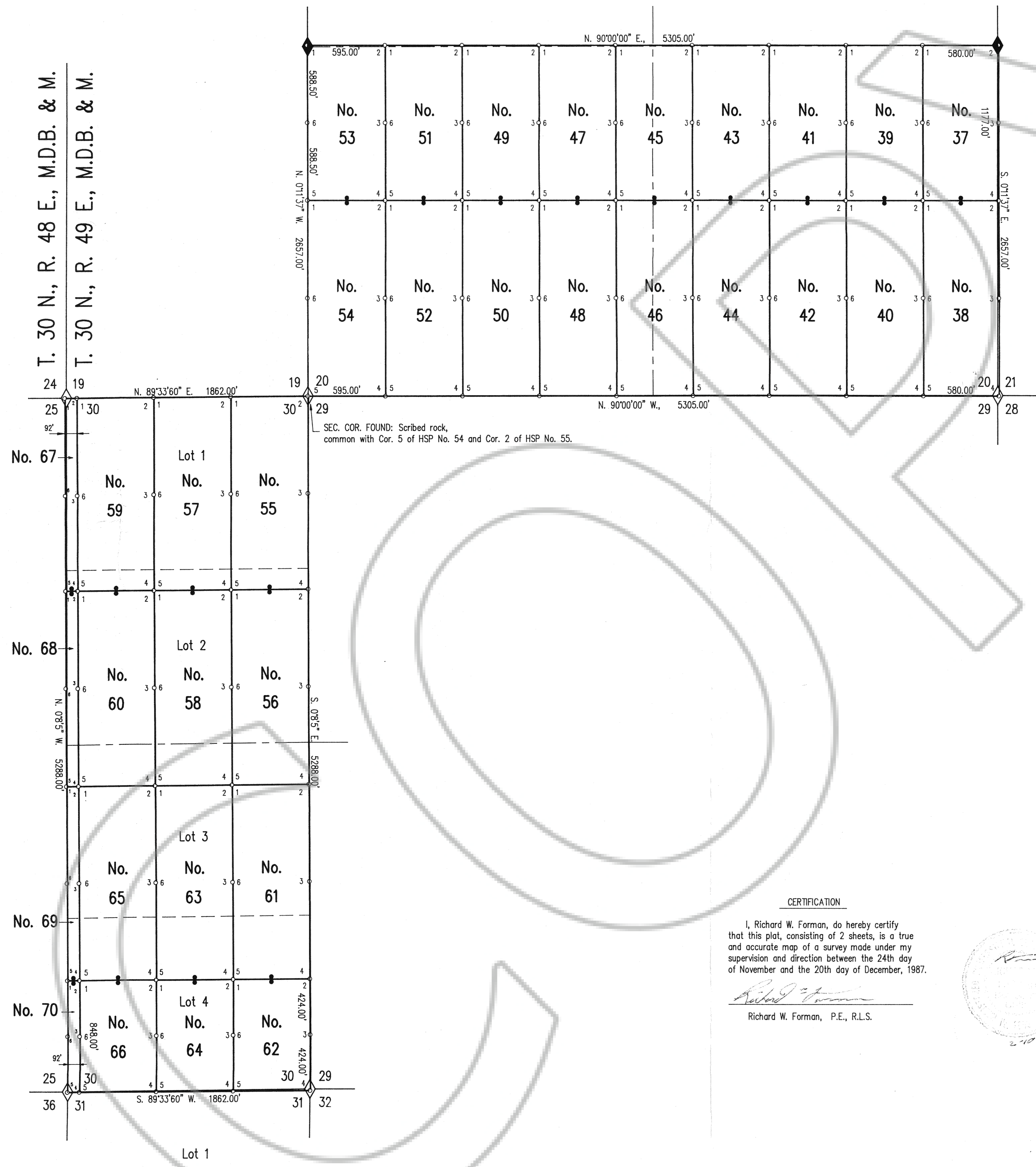


SHEET 1 OF 2 SHEETS

MAP SHOWING  
HSP LODE MINING CLAIMS  
IN  
T. 30 N., R. 49 E., M.D.B. & M.  
EUREKA COUNTY, NEVADA  
FOR  
SANTA FE PACIFIC MINING, INC.

SURVEYED & MAPPED  
BY  
BOUNDY & FORMAN, INC.  
ELY, NEVADA  
NOVEMBER & DECEMBER, 1987



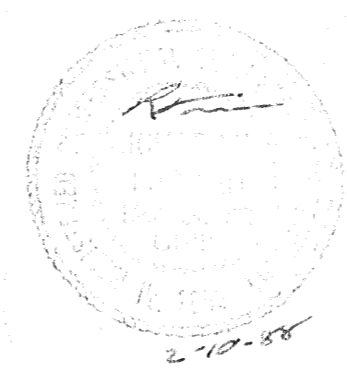


- NOTES:
- All claims are 590' wide x 1480' long with Discovery Monuments 10' from end lines, except as shown and noted.
  - At all Corners, Side Centers and Discovery Monuments are 3" diameter x 5' long posts with aluminum tags denoting the appropriate corners.
  - o = Corner and Side Center posts.  
• = Discovery Monuments.
  - These claims are located by: Santa Fe Pacific Mining, Inc.  
250 South Rock Blvd., Suite 100  
Reno, Nevada 89502
  - HSP No. 37 thru 54 located on November 24, 1987.  
HSP No. 55 thru 70 located on November 26, 1987.
  - There is a total of 34 claims shown on this sheet.

CERTIFICATION

I, Richard W. Forman, do hereby certify that this plat, consisting of 2 sheets, is a true and accurate map of a survey made under my supervision and direction between the 24th day of November and the 20th day of December, 1987.

*Richard W. Forman*  
Richard W. Forman, P.E., R.L.S.



RECORDED AT THE REQUEST OF *Santa Fe Pacific Mining, Inc.*  
 on *Feb 4 1988* at *49* mins. past *24* M. in  
 book \_\_\_\_\_ of OFFICIAL RECORDS, page \_\_\_\_\_, RECORDS OF  
 EUREKA COUNTY, NEVADA. M.N. REBALEATI, Recorder  
 File No. *116076* Fee \$ *50.00*

0 500 1000 1500 2000  
 SCALE 1" = 500'

SHEET 2 OF 2 SHEETS

MAP SHOWING  
 HSP LODE MINING CLAIMS  
 IN  
 T. 30 N., R. 49 E., M.D.B. & M.  
 EUREKA COUNTY, NEVADA  
 FOR  
 SANTA FE PACIFIC MINING, INC.

SURVEYED & MAPPED  
 BY  
 BOUNDY & FORMAN, INC.  
 ELY, NEVADA  
 NOVEMBER & DECEMBER, 1987