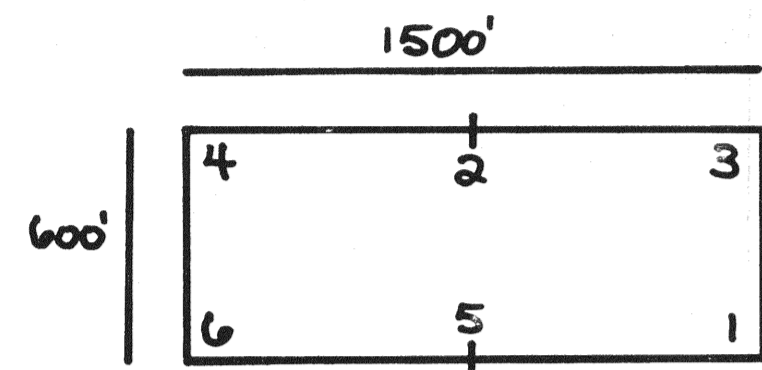


COMINCO AMERICAN INCORPORATED					
COMPILED BY	DK	DRAFTED BY	DK	BUCKHORN OPERATION	
REVISED BY	DATE	REVISED BY	DATE	Lucky Buck 329-398	
				Lode Claims	
				SCALE	1" = 500'
				DATE	3-8-88
				PLATE	3 of 3

FILED AT THE REQUEST OF Buckhorn Mines
 of March 9, 1988, at 25 mins, past 22 W.
 RECORDS OF EUREKA COUNTY, NEVADA M. N. REBALEATI, Recorder
 File No. 16921 Fee \$ 1050.00



o Location Monument
 All claims sized and monumented as shown

Located in: T26N, R49+50E
 Located by: Buckhorn Mines Company
 875 Cherry Terrace
 Susanville, CA 96130

116924

Location Date	Claim Number
12-21-87	329-354, 355, 357, 359, 361, 363, 365, 367
12-22-87	356, 358, 360, 362, 364, 366, 368, 370, 372, 374-398

Lucky Buck #167	Lucky Buck #168	Lucky Buck #196	Lucky Buck #197	Lucky Buck #254	Lucky Buck #265	Lucky Buck #302
329	330	349	350	369	370	389
331	332	351	352	371	372	390
333	334	353	354	373	374	391
335	336	355	356	375	376	392
337	338	357	358	377	378	393
339	340	359	360	379	380	394
341	342	361	362	381	382	395
343	344	363	364	383	384	396
345	346	365	366	385	386	397
347	348	367	368	387	388	398

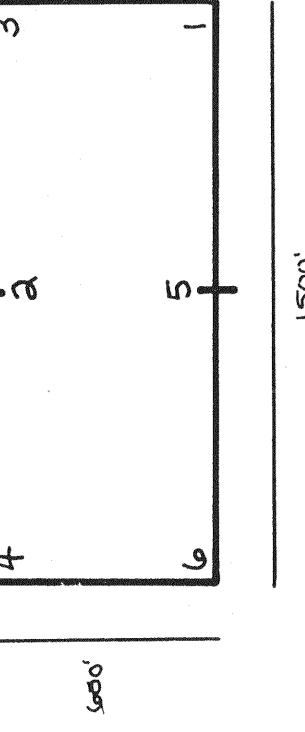
T26N R49E
 Common Corner
 Sec 1, 2, 11, 12



North

○ Location Monument

All claims sized and monumented as shown except where indicated



Located in: T26, 27N, R49E

Located by: Buckhorn Mines Company
875 Cherry Terrace
Susanville, CA 96130

Location Date	Claim Number
12-14-87	43-58, 91-114
12-15-87	1-16, 67-90
12-16-87	17-42, 190-191
12-17-87	59-66, 115-140
12-18-87	141-166
12-20-87	167, 169, 171, 173, 175, 177, 179, 181, 183, 185, 186-188, 30

FILED AT THE REQUEST OF Buckhorn Mines
on March 1, 1988 at 2:25 P.M. DISTRICT CLERK
RECORDS OF EUREKA COUNTY, NEMADA ME. REC. 116924
#16924 FEB 2 1988

116924

Shobar #15

Shobar #19

Shobar #16

Lucky Buck #239

57	00	58	113	00	114	166	00
55	00	56	111	00	112	165	00
53	00	54	109	00	110	164	00
51	00	52	107	00	108	163	00
49	00	50	105	00	106	161	00
47	00	48	103	00	104	159	00
45	00	46	101	00	102	157	00
43	00	44	99	00	100	155	00
41	00	42	97	00	98	153	00
39	00	40	95	00	96	151	00
37	00	38	93	00	94	149	00
35	00	36	91	00	92	147	00
33	00	34	89	00	90	145	00
31	00	32	87	00	88	143	00
29	00	30	85	00	86	141	00
27	00	28	83	00	84	139	00
25	00	26	81	00	82	137	00
23	00	24	79	00	80	135	00
21	00	22	77	00	78	133	00
19	00	20	75	00	76	131	00
17	00	18	73	00	74	129	00
15	00	16	71	00	72	127	00
13	00	14	69	00	70	125	00
11	00	12	67	00	68	123	00
9	00	10	65	00	66	121	00
7	00	8	63	00	64	119	00
5	00	6	61	00	62	117	00
3	00	4	59	00	60	115	00
1	00	2		00		116	00

500 0 500 1000

North

Vi 8

Vi 10

Vi 14

Vi 16

Vi 18

Vi 20

Vi 22

UNAPPROVED
TAKEN FROM
PAGE 00 PAGE
Sec 3 Sec 2

COMINCO AMERICAN INCORPORATED			
COMPILED BY: DJK		DRAFTED BY: DJK	
REVISOR BY: DATE		REVISOR BY: DATE	
BUCKHORN OPERATION			
Lucky Buck 1-167, 169, 171, 173, 175, 177, 179, 181, 183, 185-188, 190-194, 301 Lode Claims			
SCALE: 1" = 500'		DATE: 3-8-88	
PLATE: 1 of 3			

Lucky Buck # 668

