

R. 50 E.

T. 22 N.

MODIFIED STATE PLANE COORDINATE  
Y = 1,840,543.90  
X = 292,288.80

S. 14 S. 13  
S. 23 S. 24 T. 22 N., R. 50 E., M.D.P.M.

SCALE - 1" = 400'

STATE OF WYOMING ) S.S.  
COUNTY OF FREMONT )

I, RICHARD D. INBERG, A REGISTERED LAND SURVEYOR OF THE STATE OF NEVADA HEREBY CERTIFY THAT THE ACCOMPANYING MAP REPRESENTS THE PLATTED FIELD NOTES OF A SURVEY MADE DURING APRIL, 1988 OF WHICH I WAS IN RESPONSIBLE CHARGE AND IS A CORRECTLY DIMENSIONED REPRESENTATION OF SAID SURVEY.

*Richard D. Inberg*  
NEVADA L.S. REGISTRATION NO. 05950

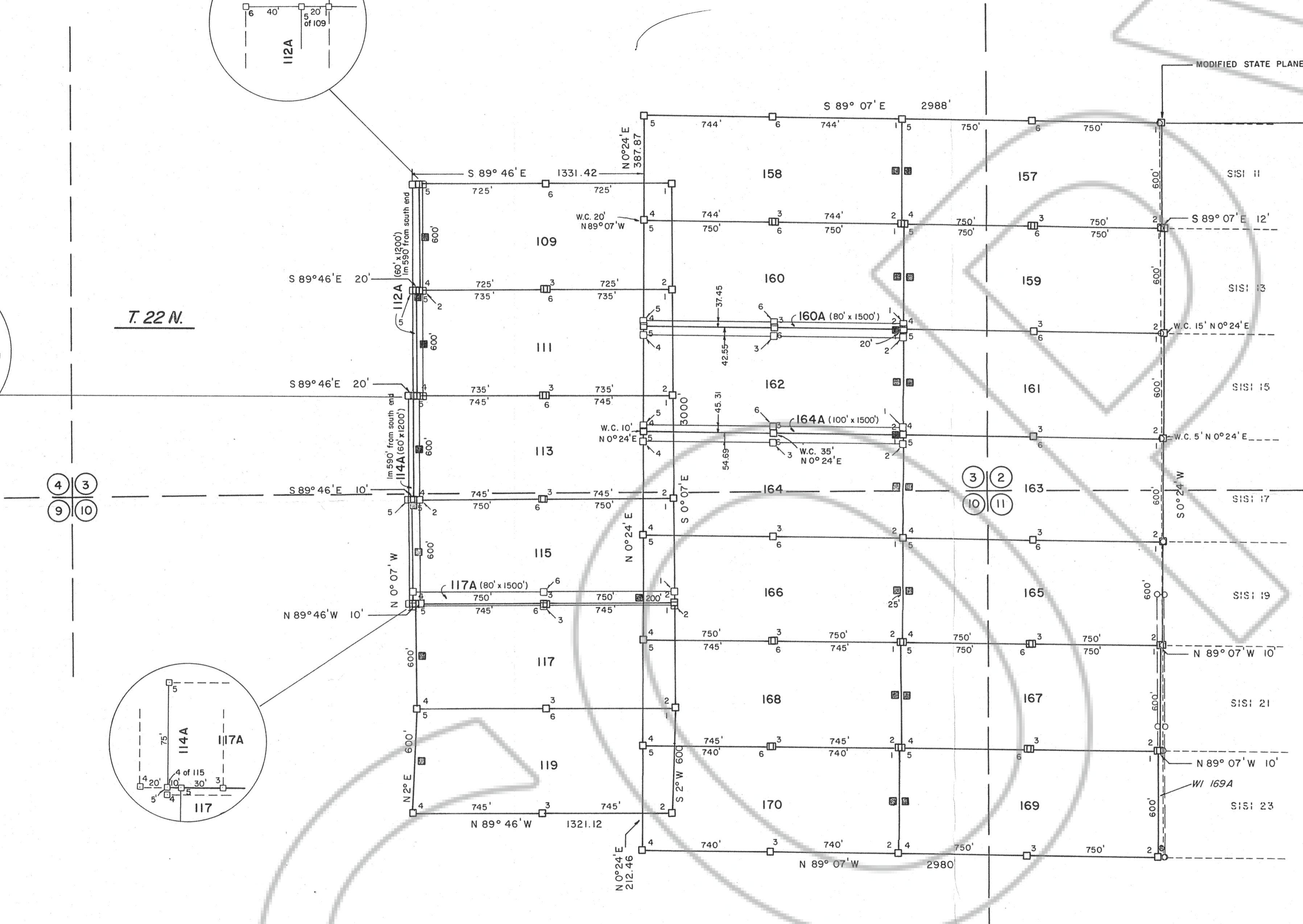


FILED AT THE REQUEST OF *Apex Surveying Inc.*  
on May 10 1988, at 30 mins, past 3P M.  
RECORDS OF EUREKA COUNTY, NEVADA M. N. REBEATI, Recorder  
File No. 118220 Fee \$ 375.00

MAP OF THE  
**AMENDED WI LODGE MINING CLAIMS**  
CLAIMS 109, 111, 113, 115, 117, 119, 157-170, 112A, 114A, 117A, 160A, 164A  
EUREKA COUNTY, NEVADA

LOCATED BY: RICHARD D. INBERG  
AGENT FOR ATLAS PRECIOUS METALS INC.  
P.O. BOX 1207  
MOAB, UTAH 84532  
APRIL 14, 1988

APEX SURVEYING INC. RIVERTON, WYOMING



**LEGEND**

- - 4" x 4" x 4' WOOD POST LOCATION MONUMENT
- - 4" x 4" x 4' WOOD POST MONUMENT ADJACENT TO 5/8" x 18" REBAR
- ⊕ - INDICATES SECTION CORNER
- ◇ - MARKED STONE FOUND
- - 3" DURABLE PLASTIC PIPE MONUMENT 4' LONG
- - 3" DURABLE PLASTIC PIPE LOCATION MONUMENT 4' LONG

**NOTES**

- 1) LOCATION MONUMENTS ARE 10' FROM END LINE OF CLAIM UNLESS OTHERWISE SHOWN.
- 2) SECTION CORNERS AND LINES ARE FROM THE NEVADA PROTRACTION DIAGRAM. NO SECTION CORNERS WERE FOUND OR SET EXCEPT WHERE OTHERWISE SHOWN.
- 3) BEARINGS SHOWN ARE GRID AND REFERENCED TO THE NEVADA STATE PLANE COORDINATE SYSTEM, EAST ZONE (DISTANCES SHOWN ARE SURFACE, NOT SEA LEVEL)
- 4) A MODIFIED STATE PLANE COORDINATE SYSTEM HAS BEEN COMPUTED FOR APPLICATION IN THE USE OF FIELD MEASUREMENTS.

**LOCATION DATES**

APRIL 26, 1988	163 - 170
APRIL 30, 1988	157 - 162, 160A, 164A
MAY 3, 1988	109, 111, 113, 115, 117, 119, 112A, 114A
MAY 2, 1988	117A