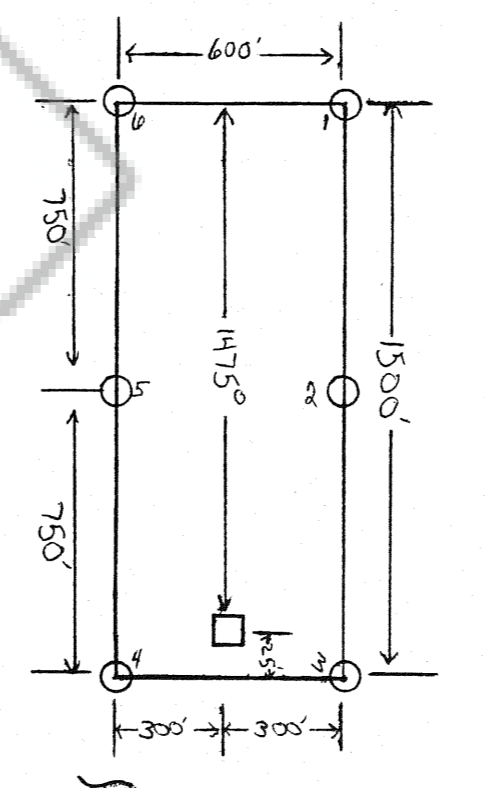
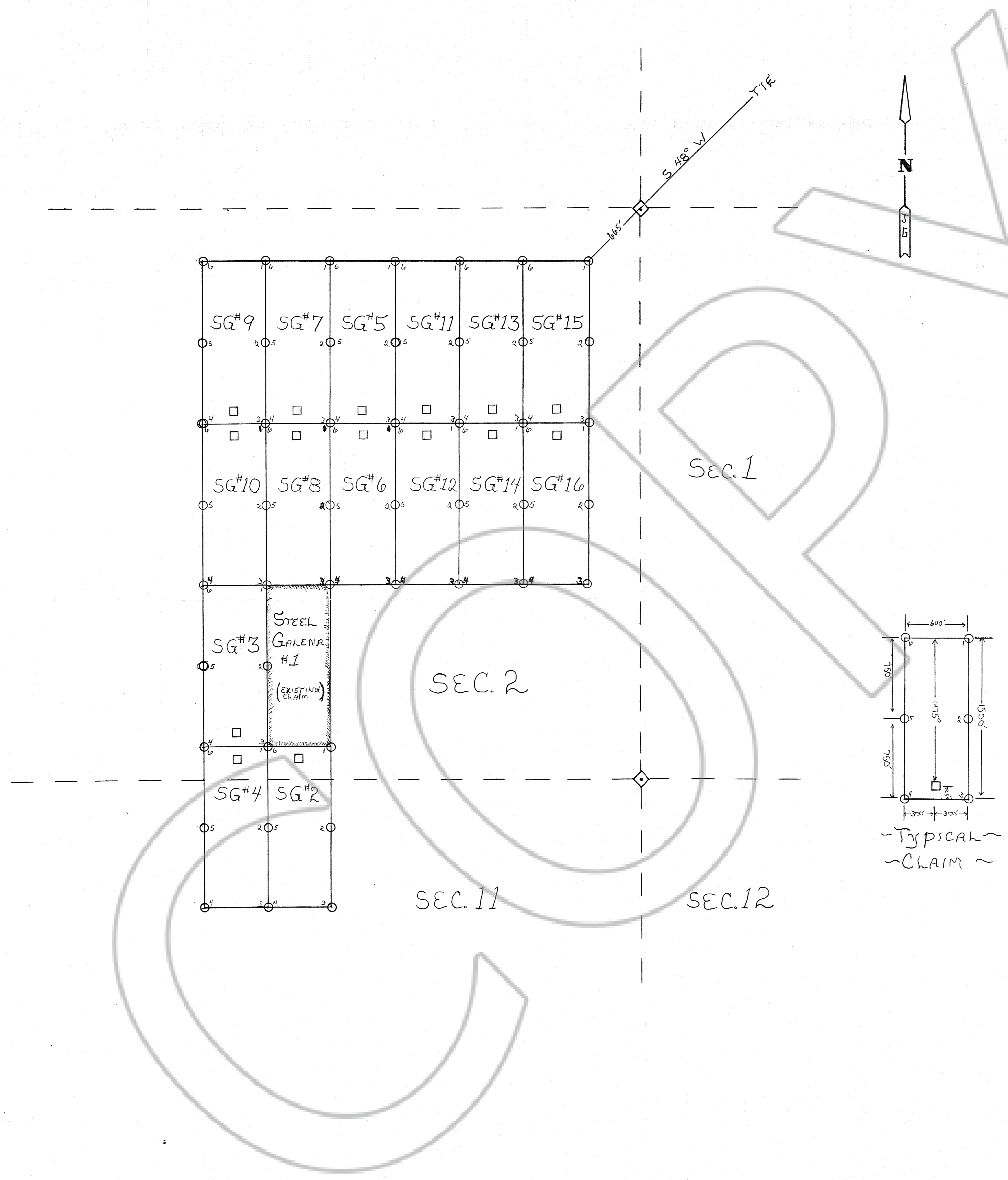


"SG" LODE CLAIMS 2~16

TOWNSHIP 22 NORTH
 RANGE 54 EAST
 SECTIONS 2 & 11
 DIAMOND MINING DISTRICT
 EUREKA COUNTY, NEVADA
 LOCATED: APRIL 29, 1988
 LOCATOR: JOHN GERGEN
 WILLIAM GERGEN
 370 PARKER AVE.
 ELY, NV. 89301
 SCALE: 1" = 500'



~ TYPICAL ~
 ~ CLAIM ~

- ◇ ~ SECTION CORNER
- ~ LOCATION MONUMENT
- ~ BOUNDARY POST

FILED AT THE REQUEST OF *Desert Geophysical Corp*
 on *May 23 1988* at *12* MINS. DIST. *22 N.*
 RECORDS OF EUREKA COUNTY, NEVADA M. N. REBALEATI, Recorder
 FILE # **118651** Fee \$ *225.00*