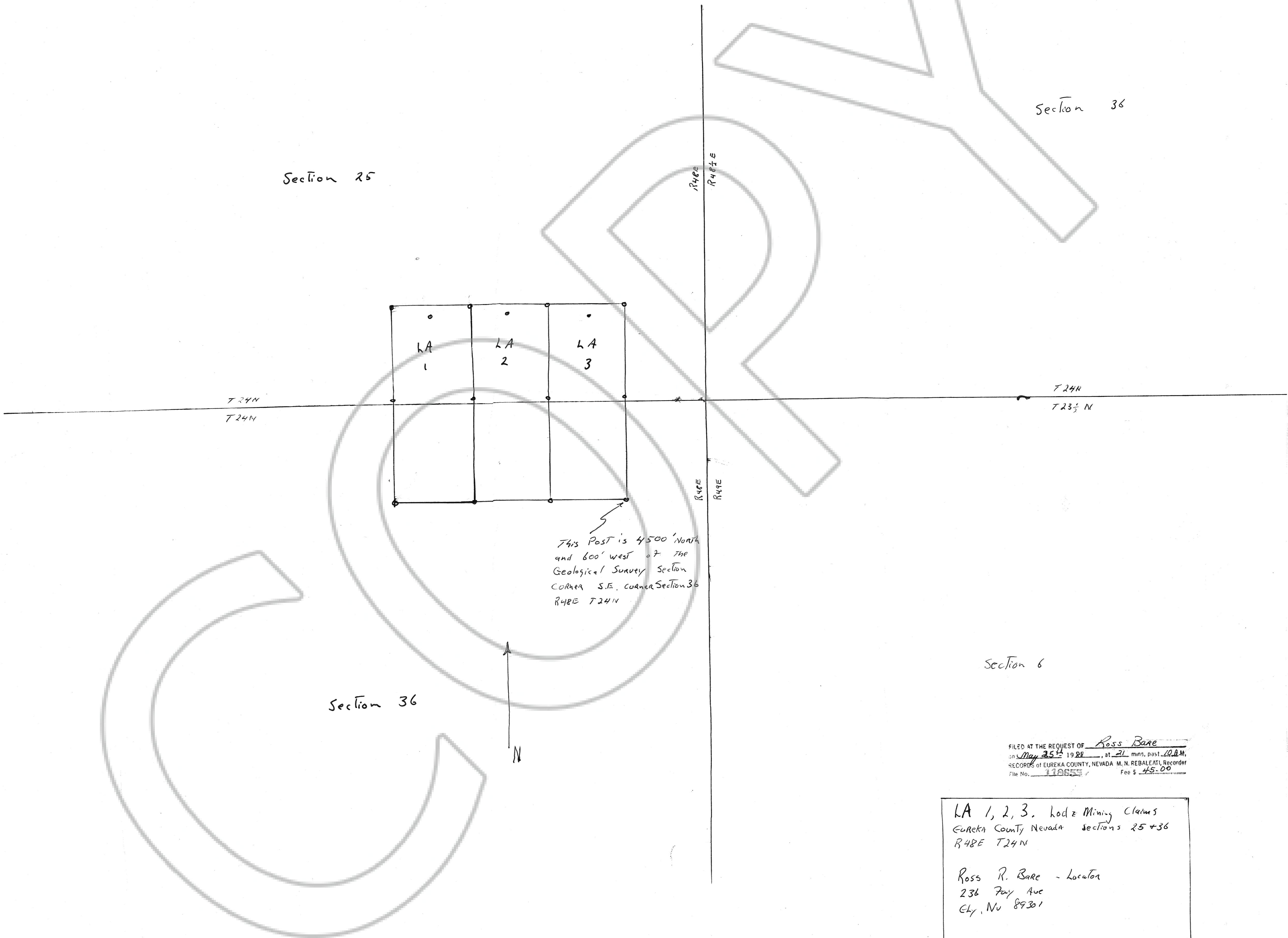


Section 25

Section 36



This Post is 4500' North
 and 600' west of the
 Geological Survey Section
 CORNER S.E. corner Section 36
 R48E T24N

Section 36

Section 6

FILED AT THE REQUEST OF Ross Bare
 ON May 25 1988 at 21 hrs. part 10AM
 RECORDS OF EUREKA COUNTY, NEVADA M. N. REBALEATI, Recorder
 File No. 110655 Fee \$ 45.00

LA 1, 2, 3. Lode Mining Claims
 Eureka County Nevada Sections 25 + 36
 R48E T24N

Ross R. Bare - Locator
 236 Fay Ave
 Ely, NV 89301