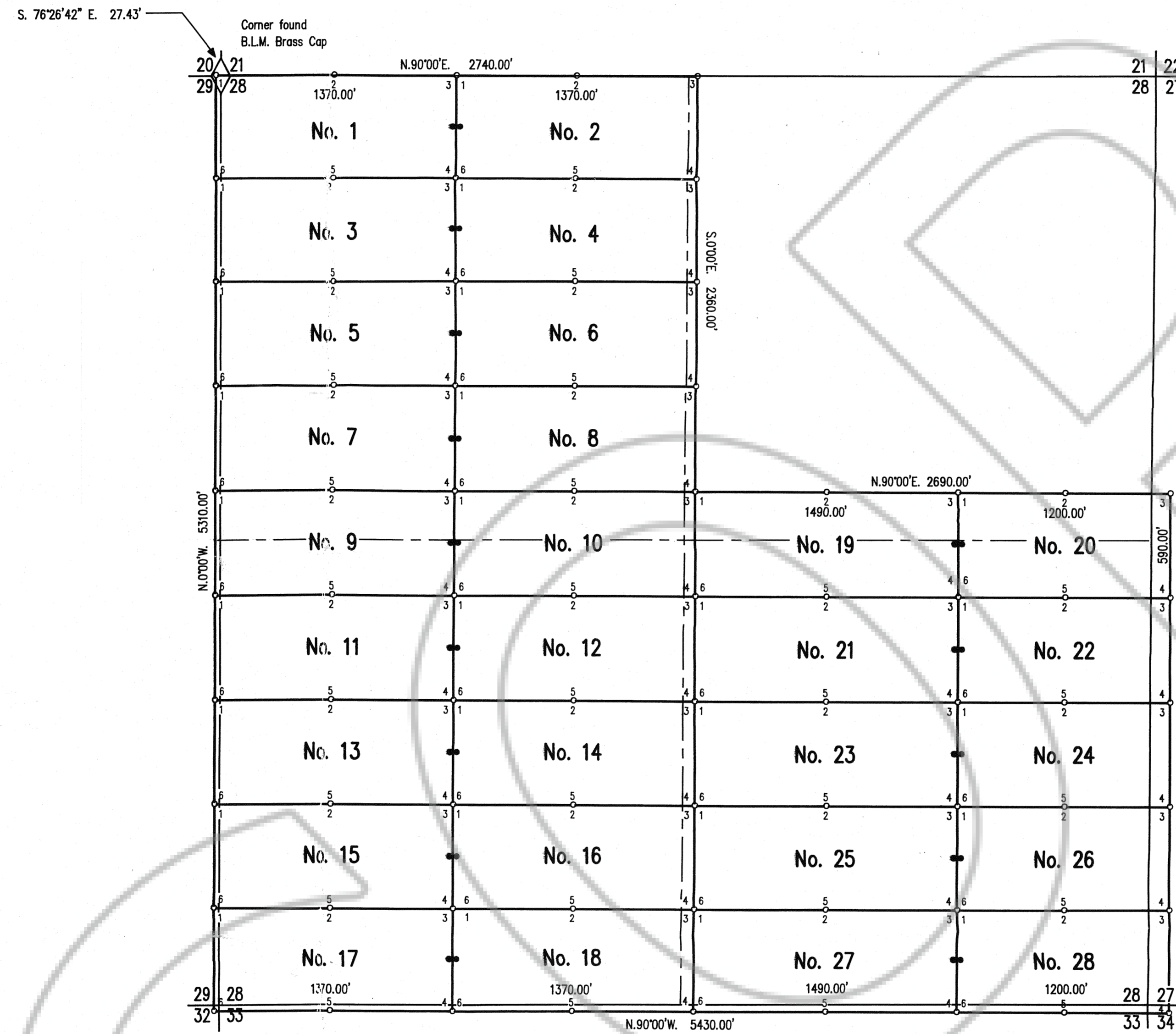
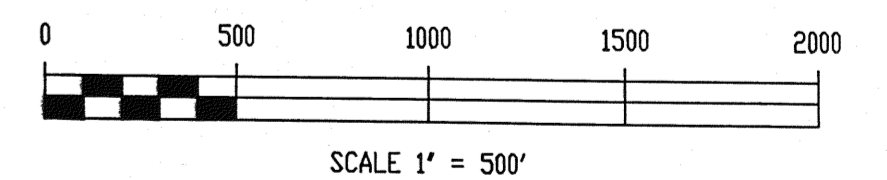


T.36 N., R.49 E., M.D.B. & M.



NOTES :

1. These claims are located by = Santa Fe Pacific Mining, Inc.  
250 South Rock Blvd.  
Suite 100  
Reno, Nevada 89502
2. At all Corners, Side Centers and Discovery Monuments are 3" minimum diameter x 5' long posts with aluminum tags denoting the appropriate corners.
3. ○ = Corner and Side Center posts.  
● = Discovery Monuments.
4. TLS No. 1 through 28 located the May 5, 1988.
5. There is a total of 28 lode claims.



FILED AT THE REQUEST OF  
SANTA FE PACIFIC MINING, INC.  
on May 26 1988, at 38 mins. past 11 A. M.  
RECORDS OF EUREKA COUNTY, NEVADA M. N. REBALE ATL Recorder  
File No. 118685 Fee \$ 420.00

SURVEYED & MAPPED  
BY  
BOUNTY & FORMAN, INC.  
ELY, NEVADA  
MAY, 1988

MAP SHOWING  
TLS No. 1 THRU No. 28  
LODE MINING CLAIMS  
IN T. 36 N., R. 49 E., M.D.B. & M.  
EUREKA COUNTY, NEVADA  
FOR  
SANTA FE PACIFIC MINING, INC.