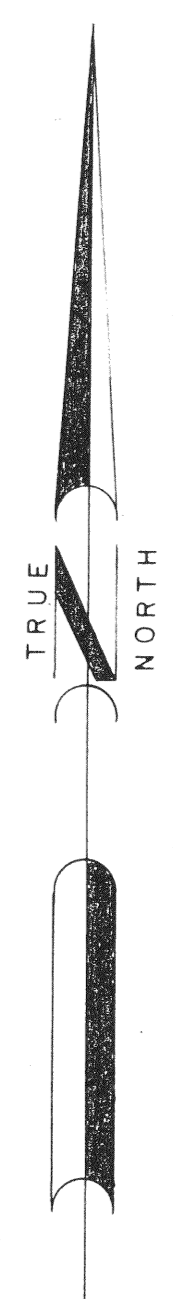
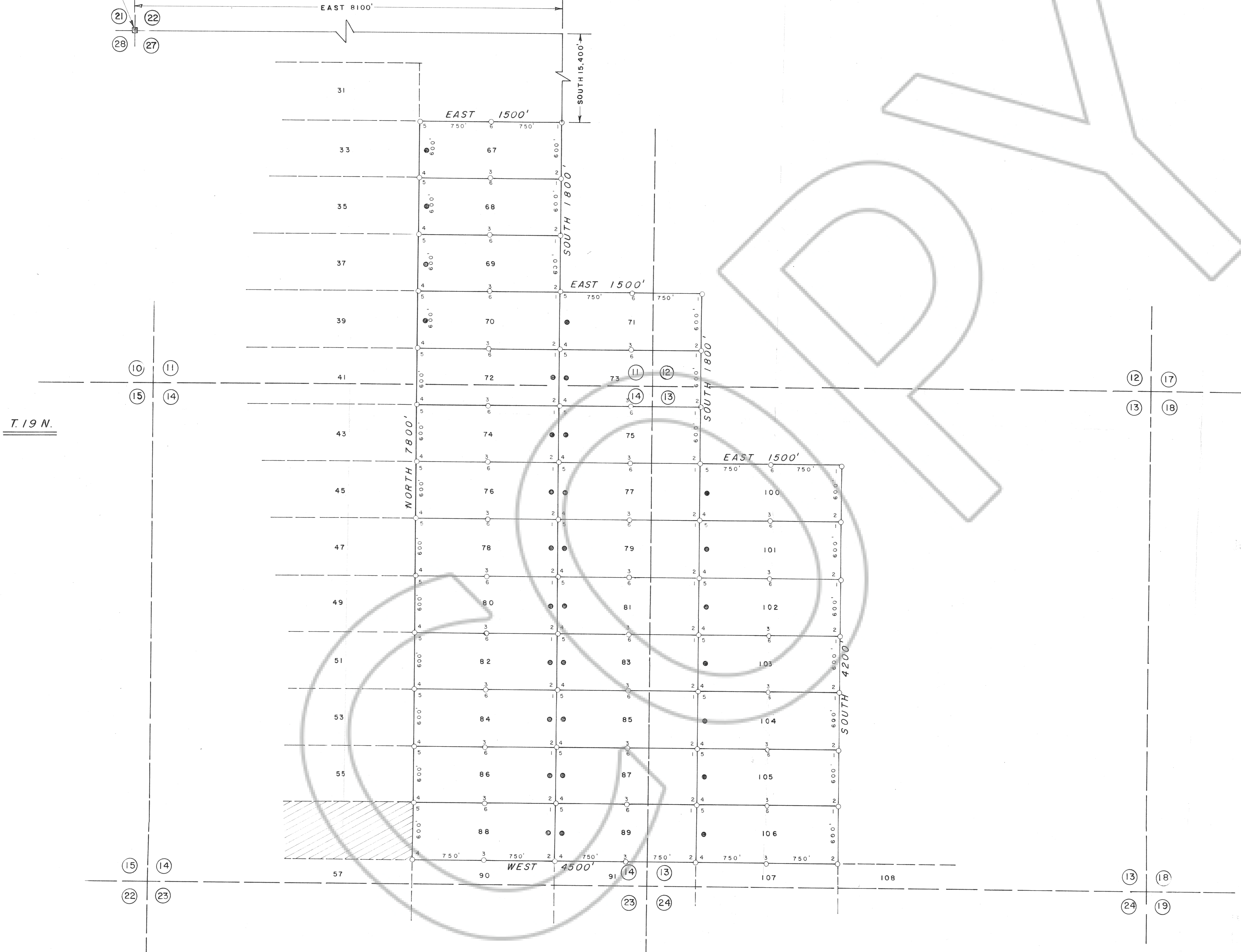


NORTHWEST CORNER
SECTION 27, T.20N., R.52 E.
M.D.P.M.

R. 52 E.



SCALE - 1" = 500'

LEGEND

- - 4"x4" WOOD POST OR 3"x4" DURABLE PLASTIC PIPE OR CUT AND MARKED TREE LOCATION MONUMENT
- - 4"x4" WOOD POST OR 3"x4" DURABLE PLASTIC PIPE OR CUT AND MARKED TREE MONUMENT
- ⊕ - INDICATES SECTION CORNER

NOTES

- 1) LOCATION MONUMENTS ARE 10' FROM END LINE OF CLAIM.
- 2) SECTION LINES ARE PROJECTED.

LOCATION DATES

- APRIL 19, 1988 - 67 THRU 89
- APRIL 20, 1988 - 100 THRU 106

FILED AT THE REQUEST OF *ApeX Surveying, Inc.*
on *May 11* 19 *88*, at *2* mins, Dist. *11A*,
RECORDS OF EUREKA COUNTY, NEVADA M. N. REBALEATI, Recorder
File No. *118723* Fee \$ *450.00*

MAP OF THE
OLD YELLER LODGE MINING CLAIMS
EUREKA COUNTY, NEVADA

LOCATED BY TERRY ZENK
AGENT FOR
ATLAS PRECIOUS METALS INC.
P. O. BOX 1207
MOAB, UTAH
84532
MAY 9, 1988

118723

APEX SURVEYING INC. RIVERTON, WYOMING