

- LEGEND**
- ◊ Found Standard Brass Cap Monument.
  - △ Found 5/8" Rebar with Tag RLS 827.
  - ◻ Found 5/8" Rebar with Cap RLS 3144.
  - Set 5/8" Rebar with Tag RLS 827.
  - 60E 60' Access and Public Utility Easement.
  - (-- ) Distance shown on R.O.S. Doc. No. 104686.

**BASIS OF BEARINGS**  
 Basis of bearings for this Parcel Map is Record of Survey, Document No. 104686.

**NOTE**  
 Due to finding original monuments at the SE corner and the S. 1/4 corner of Section 17 that were not found nor used on the survey for the Large Division Map (Document No. 81925) and subsequent Parcel Map for Parcel "A" (Document No. 82265) and corners set thereby, this data could not be used for this survey except for the lot size and shape and the location of streets and street easements. Corners erroneously set pertaining to Parcel "A" have been removed to avoid confusion except those on the East side of Lot 4 of Lot 2. See Record of Survey, Document No. 104686.

**OWNER'S CERTIFICATE**  
 This is to certify that the undersigned, William J. and Phyllis Black, Earl A. and Lavernia C. Rasmussen and Evelyn S. Naillon are the owners of record of Lot 2 of Parcel "A" of the East 1/2 of Section 17, T. 20 N., R. 53 E., M. D. B. & M., and have consented to the preparation and recordation of our parcelling of said Lot 2, and do hereby reserve and set apart forever the easement for El Paso Drive.

*William J. Black*      *Phyllis Black*  
 William J. Black      Phyllis Black

*Earl A. Rasmussen*      *Lavernia C. Rasmussen*  
 Earl A. Rasmussen      Lavernia C. Rasmussen

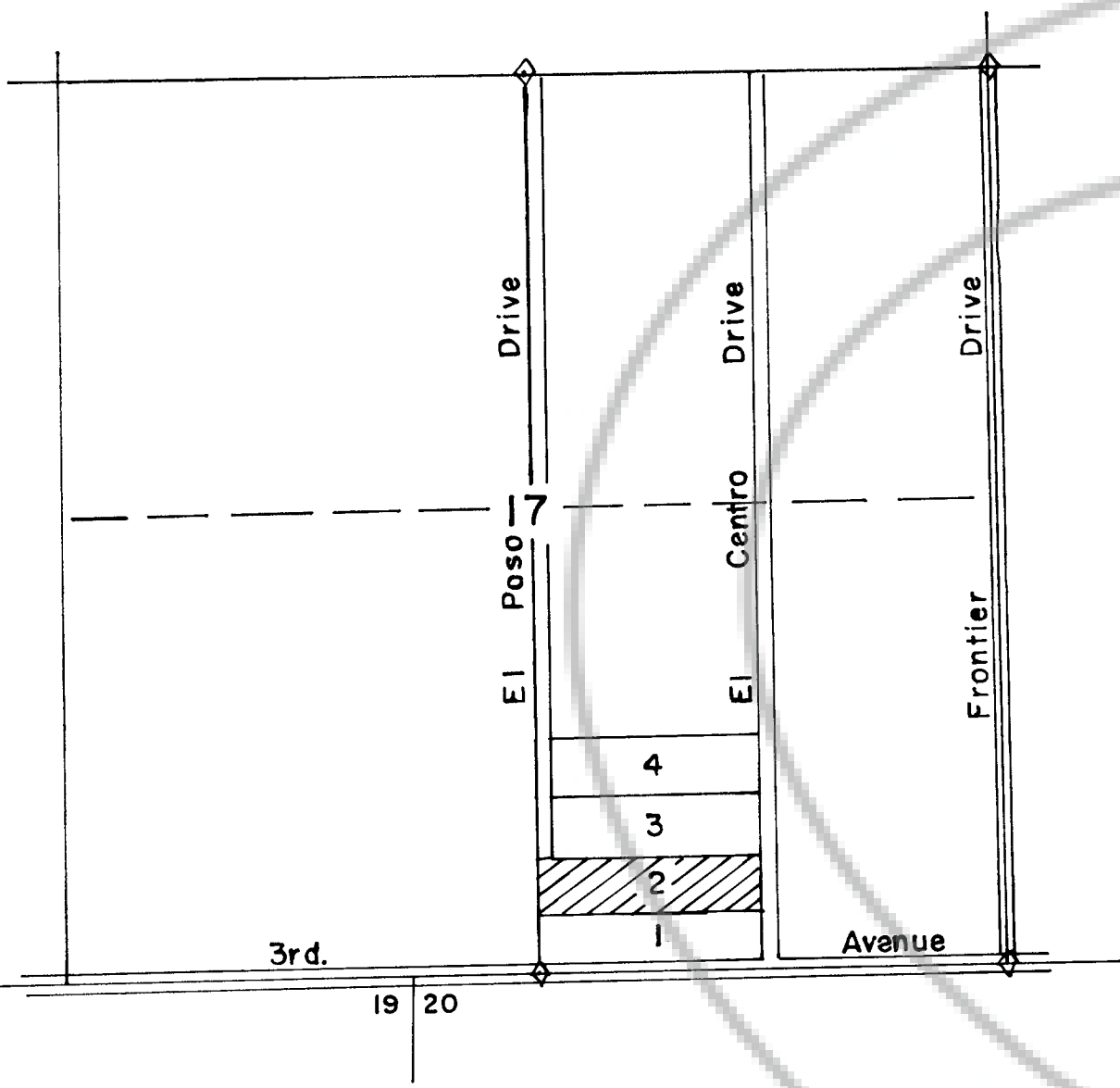
*Evelyn S. Naillon*  
 Evelyn S. Naillon

**PLANNING COMMISSION APPROVAL**  
 At a regular meeting of the Eureka County Planning Commission held on May 2, 1988, this map was approved for subdivision purposes pursuant to N. R. S. 278.461 to 278.469 inclusive.

*Ray H. Langford*      *Paul Shangle*  
 Chairman      Clerk  
 Eureka County Planning Commission      Eureka County

**COUNTY COMMISSIONER'S APPROVAL**  
 At a regular meeting of the Eureka County Commissioners held on May 2, 1988, this map, consisting of one sheet, was presented as a proposed Amended Parcel Map of Lot 2 of Parcel "A" of the East 1/2 of Section 17, T. 20 N., R. 53 E., M. D. B. & M., located in Eureka County, Nevada by William J. and Phyllis Black, Earl A. and Lavernia C. Rasmussen and Evelyn S. Naillon.

*LeRoy Elchey*      *Paul Shangle*  
 Chairman      Clerk  
 Eureka County Commissioners      Eureka County



LOCATION SKETCH  
 PARCEL "A"

- CONDITIONS**
1. That all parcel lines and easements remain as shown to the Planning Commission until the map is recorded.
  2. That all requirements of government agencies with permit authority be met.
  3. That the streets shown on this Parcel Map be provided in accordance with Eureka County specifications relating to County Roads and their acceptance.

**FLOOD ZONE**  
 The parcels shown on this Parcel Map are in Flood Zone A as indicated on maps prepared by FEMA.

**SURVEYOR'S CERTIFICATE**  
 I, Ernest E. Muller, Sr., a Registered Land Surveyor in the State of Nevada, certify that:

1. This is a true and accurate representation of the lands surveyed by me at the instance of Earl A. Rasmussen.
2. The lands surveyed lie within the East 1/2 of Section 17, T. 20 N., R. 53 E., M. D. B. & M., and the survey was completed on the 9th. day of February, 1988.
3. This plat complies with the applicable state statutes and any local ordinances.
4. The monuments are of the character shown and occupy the positions indicated, and are sufficient to retrace this survey.

*Ernest E. Muller, Sr.*  
 Ernest E. Muller, Sr., RLS 827  
 FEBRUARY 9 1988  
 EUREKA COUNTY, NEVADA

**RECORDER'S CERTIFICATE**  
 File Number 15511 Fee \$20.00  
 Filed for record at the request of Ernest E. Muller, Sr. on this 3<sup>rd</sup> day of June, 1988 at 11 minutes past 3 o'clock P. M., Official Records of Eureka County, Nevada.

*Ernest E. Muller, Sr.*  
 Recorder

**MAP AREA**  
 Total area of this Parcel Map is 9.777± Acres.

**AMENDED PARCEL MAP**  
 FOR  
**BLACK, RASMUSSEN & NAILLON**  
 PARCELLING OF LOT 2  
 OF PARCEL "A" OF LARGE DIVISION MAP  
 E. 1/2 SEC. 17, T. 20 N., R. 53 E., M.D.B. & M.  
 EUREKA COUNTY, NEVADA