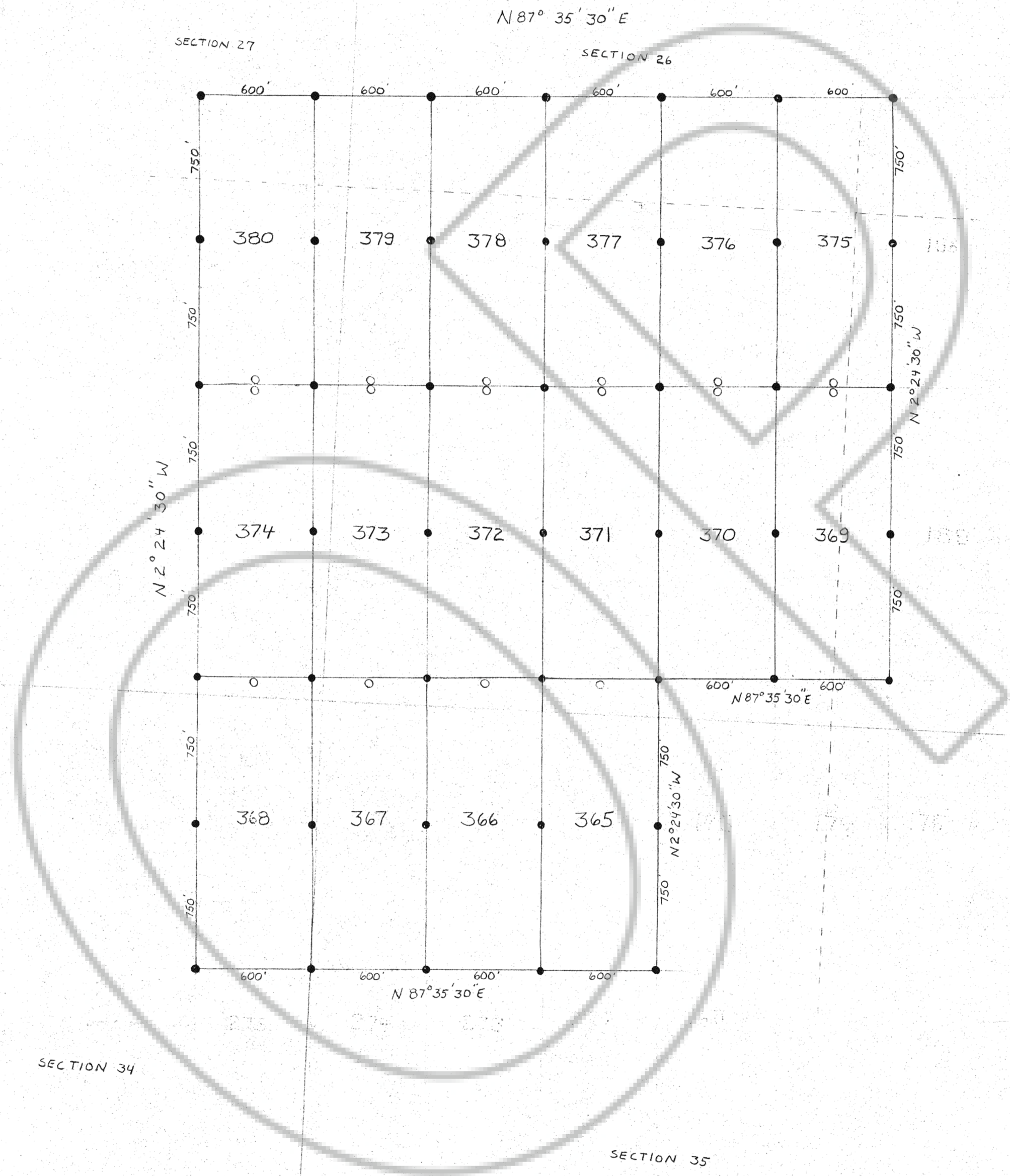
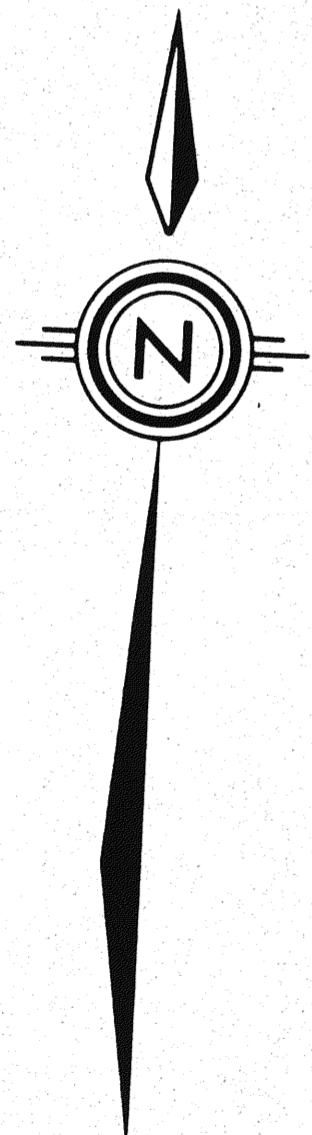


MAP OF THE JOY-365 through - 380
LODE CLAIM GROUP

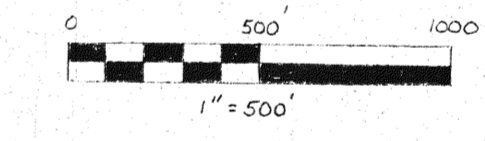
Lode Claim	Location Date	Locator
Joy-365 through Joy-380	June 3, 1988	ASARCO, Inc. 510 East Plumb Lane Reno, Nevada 89502



There are 7 posts of durable plastic pipe at least 3" in diameter by 4.5' long set 1' in the ground. One post for the Discovery Monument (o), one for each of the 4 corners, and one for the center of each sideline (•), as prescribed by N.R.S. 517.030.

All corners and sidecenters are identified 2,3,4,5,6, and 1 in a clockwise direction from the Discovery Monument.

The northwest corner of JOY-367 is located 120' north and 60' west of the northwest corner of section 35, T24N, R50E, MDB&M. All Discovery Monuments are located 20' from the endlines.



T24 N., R.50 E., M.D.B. & M.
EUREKA COUNTY, NEVADA

FILED AT THE REQUEST OF Asarco
on June 16 19 88 at 10 mins, past 10 A.M.
RECORDS OF EUREKA COUNTY, NEVADA M. N. REBALEATI, Recorder
File No. 119235 Fee \$ 240.00

ASARCO, Incorporated
510 East Plumb Lane
Reno, Nevada 89502