

CORNER RECORD

Filed as required by Statutes of Nevada, 1969, Chapter 366.

119236

Sheet 1 of 2 sheets.

Sec. 1 Twp. 33 Range 51 Mt. Diablo PM.

County of EUREKA State of Nevada.

See other side of sheet for instructions.

SECTION 36

SECTION 31

From E 1/4, Sec. 1, T.33N., R.51E.
(N 0° 29' 38" W ~ 2558.330 ft.)
to the NE Cor. Sec. 1, T.33N., R.51E.

N. 17,258.769
E. 30,631.420
1914 G.L.O. B.C.

T. 34 N.
T. 33 N.

MONUMENTS
OBLITERATED BY LEACH
PAD CONSTRUCTION

1/4 COR
N. 14,700.534
E. 30,663.474

SECTION 1

SECTION 6

From W 1/4, Sec. 6, T.33 N., R.52E.
(N 0° 18' 29" W ~ 344.602 ft.)
to E 1/4, Sec. 1, T.33 N., R.51E.

1/4 COR
N. 14,355.927
E. 30,655.327

N. 12,033.551
E. 30,658.949
1914 G.L.O. B.C.

From SE Cor. Sec. 1, T.33N., R.51E.
(N 0° 05' 22" W ~ 2322.389 ft.)
to W 1/4, Sec. 6, T.33N., R.52E.

SECTION 12

SECTION 7

R. 51 E.
R. 52 E.

SURVEYOR'S CERTIFICATE.

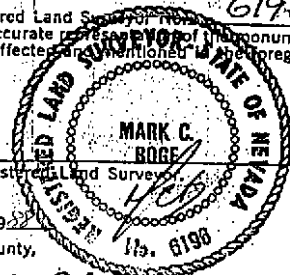
MARK C. BOGE

Registered Land Surveyor No. 6196

I, the State of Nevada do hereby certify that the foregoing is a true, complete and accurate representation of the monument, or monuments, recovered, rehabilitated, restored, re-established or otherwise effected and mentioned in the foregoing Corner Record.

Date survey was completed 4/29/88

Date Corner Record filed



Accepted for filing on this 16th day of June, 1988, in the office of the County Recorder, Eureka County, State of Nevada.

M. W. Reboleachi

County Recorder

By

CORNER RECORD

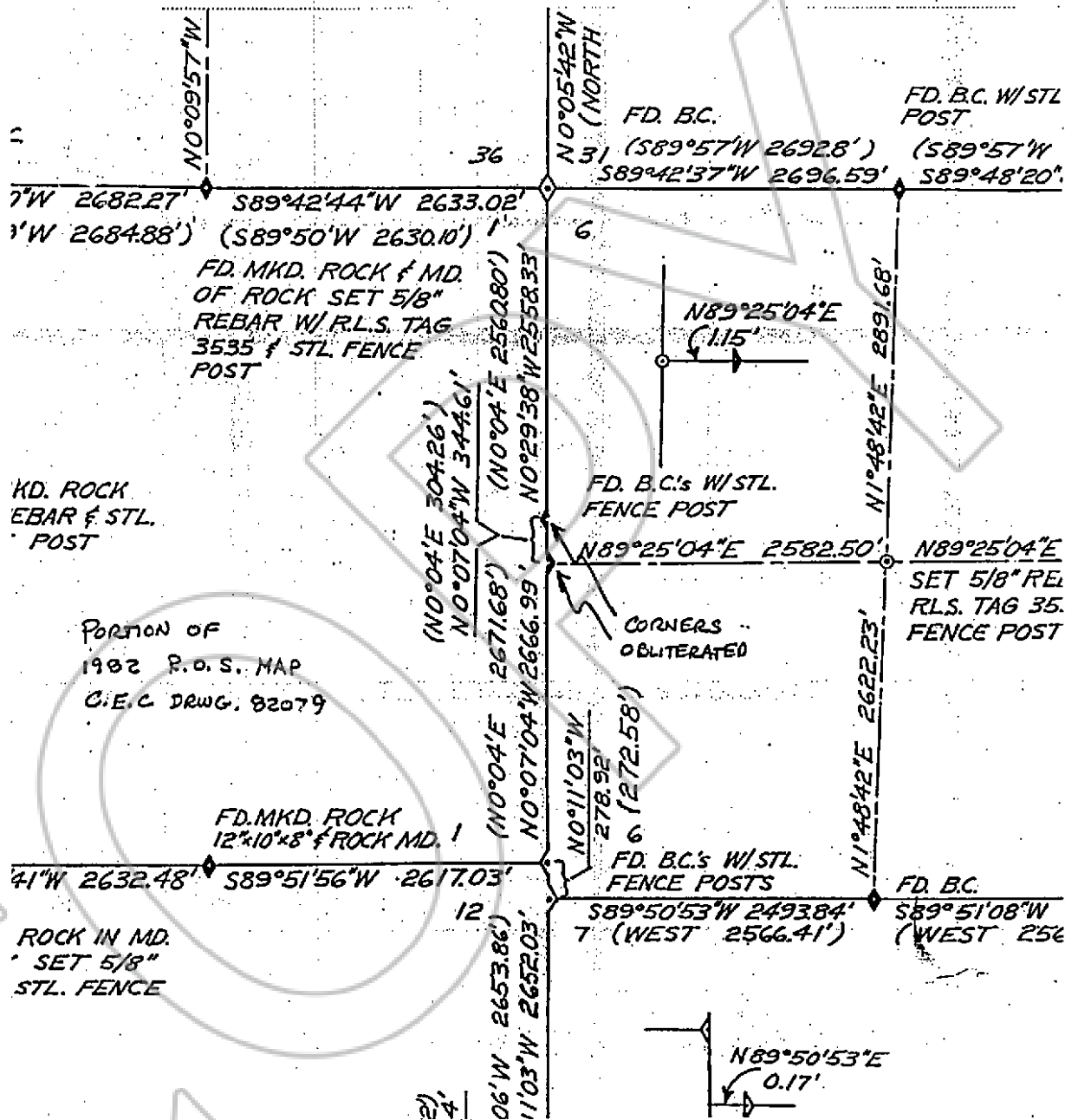
Filed as required by Statutes of Nevada, 1969, Chapter 366.

Sheet 2 of 2 sheets.

Sec 1 Twp. 33 Range 51 Mt. Diablo PM.

County of EUREKA State of Nevada.

See other side of sheet for instructions.



SURVEYOR'S CERTIFICATE.

I, _____ Registered Land Surveyor No. _____ in the State of Nevada do hereby certify that the foregoing is a true, complete and accurate representation of the monument, or monuments, recovered, rehabilitated, restored, re-established or otherwise effected and mentioned in the foregoing Corner Record.

Date survey was completed _____

Date Corner Record filed _____

Registered Land Surveyor.

Accepted for filing on this _____ day of _____, 19____
In the office of the County Recorder _____ County,
State of Nevada.

County Recorder

119236

By _____