

CORNER RECORD

Filed as required by Statutes of Nevada, 1969, Chapter 366.

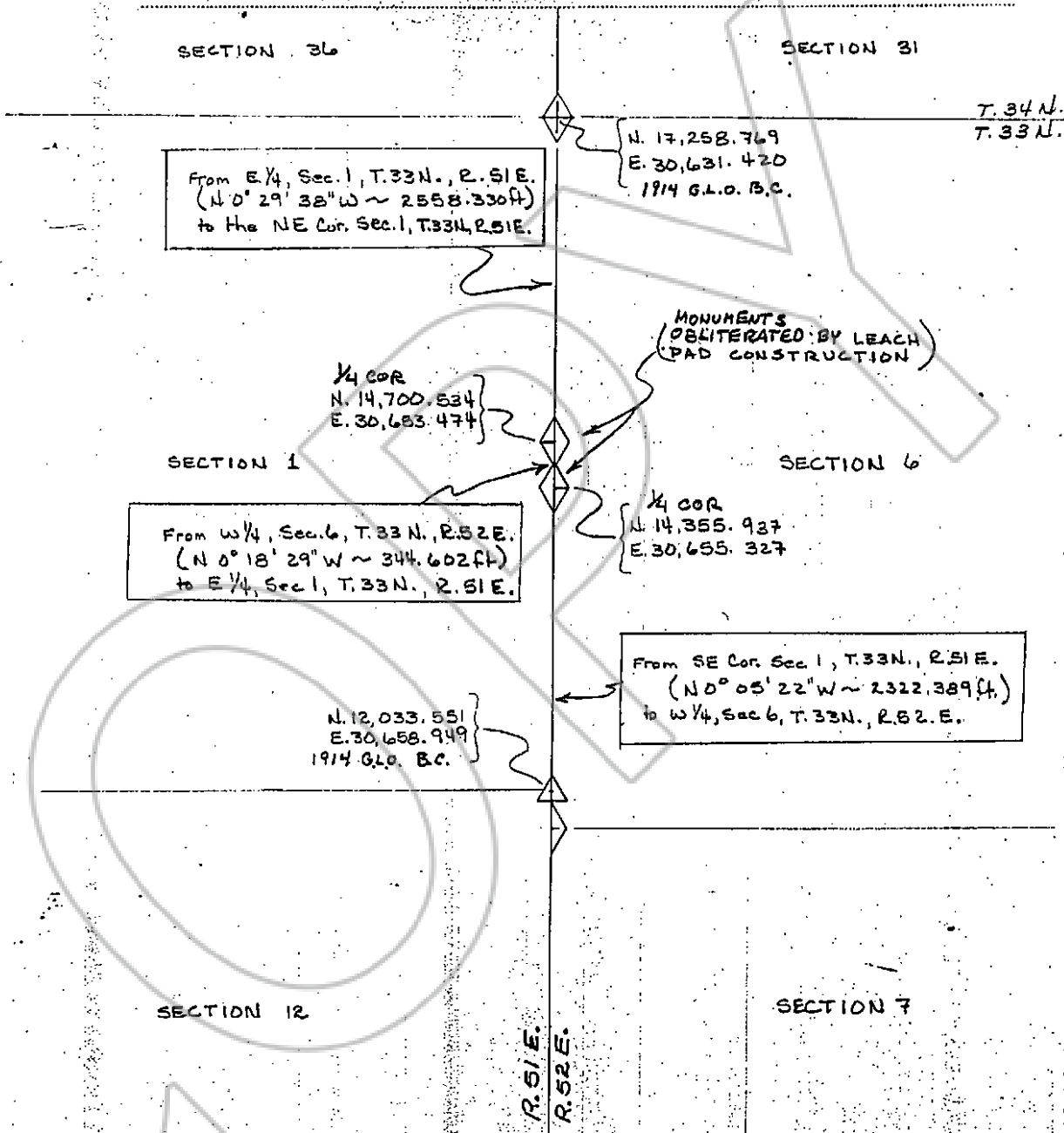
Sheet 1 of 2 sheets.

Sec. 6 Twp. 33 Range S2 Mt. Diablo PM.

119237

County of EUREKA State of Nevada.

See other side of sheet for instructions.



SURVEYOR'S CERTIFICATE

I, MARK C. BOGE

Registered Land Surveyor No. 6196 in

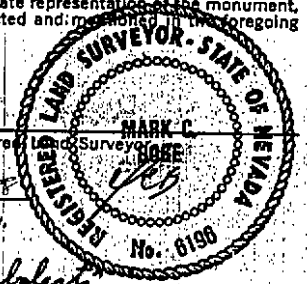
the State of Nevada do hereby certify that the foregoing is a true, complete and accurate representation of the monument, or monuments, recovered, rehabilitated, restored, re-established or otherwise effected and measured on the foregoing Corner Record.

Date survey was completed 4/29/88

Date Corner Record filed _____

Registered Land Surveyor MARK C. BOGE

Accepted for filing on this 16th day of June 1988
In the office of the County Recorder Eureka County,
State of Nevada.



M. J. Reblat
County Recorder

By _____

CORNER RECORD

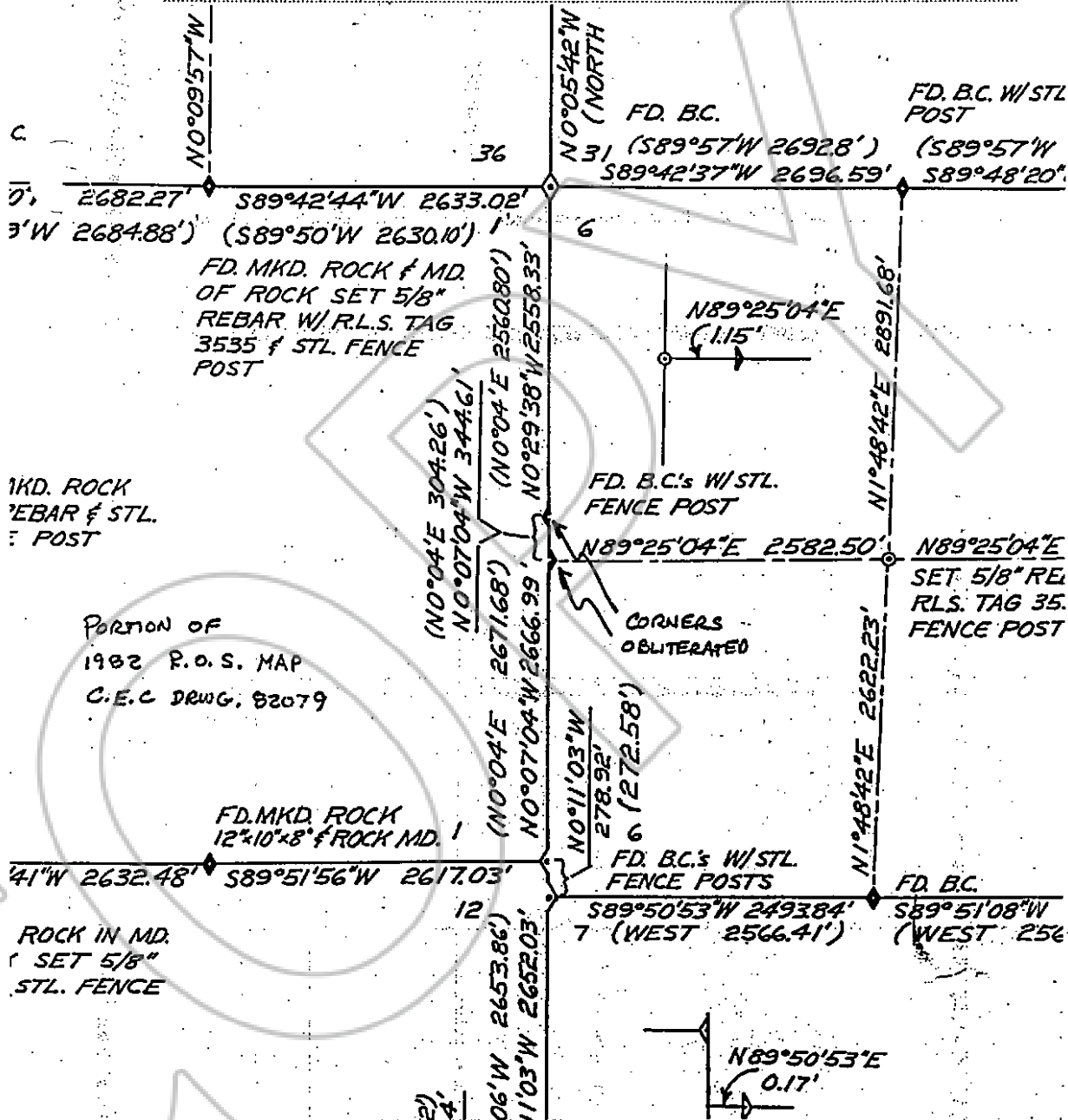
Filed as required by Statutes of Nevada, 1969, Chapter 366.

Sheet 2 of 2 sheets.

Sec. 6 Twp. 33 Range 53, Mt. Diablo PM.

County of EUREKA State of Nevada.

See other side of sheet for instructions.



MKD. ROCK
REBAR & STL.
FENCE POST

PORTION OF
1982 P.O.S. MAP
C.E.C DRWG. 82079

FD. MKD. ROCK
12"x10"x8" & ROCK MD. 1
ROCK IN MD.
SET 5/8"
STL. FENCE

SURVEYOR'S CERTIFICATE:

I, _____ Registered Land Surveyor No. _____ in the State of Nevada do hereby certify that the foregoing is a true, complete and accurate representation of the monument, or monuments, recovered, rehabilitated, restored, re-established or otherwise effected and mentioned in the foregoing Corner Record.

Date survey was completed _____
Date Corner Record filed _____

Registered Land Surveyor.

Accepted for filing on this _____ day of _____, 19____
in the office of the County Recorder _____ County,
State of Nevada.

County Recorder

119237

By _____