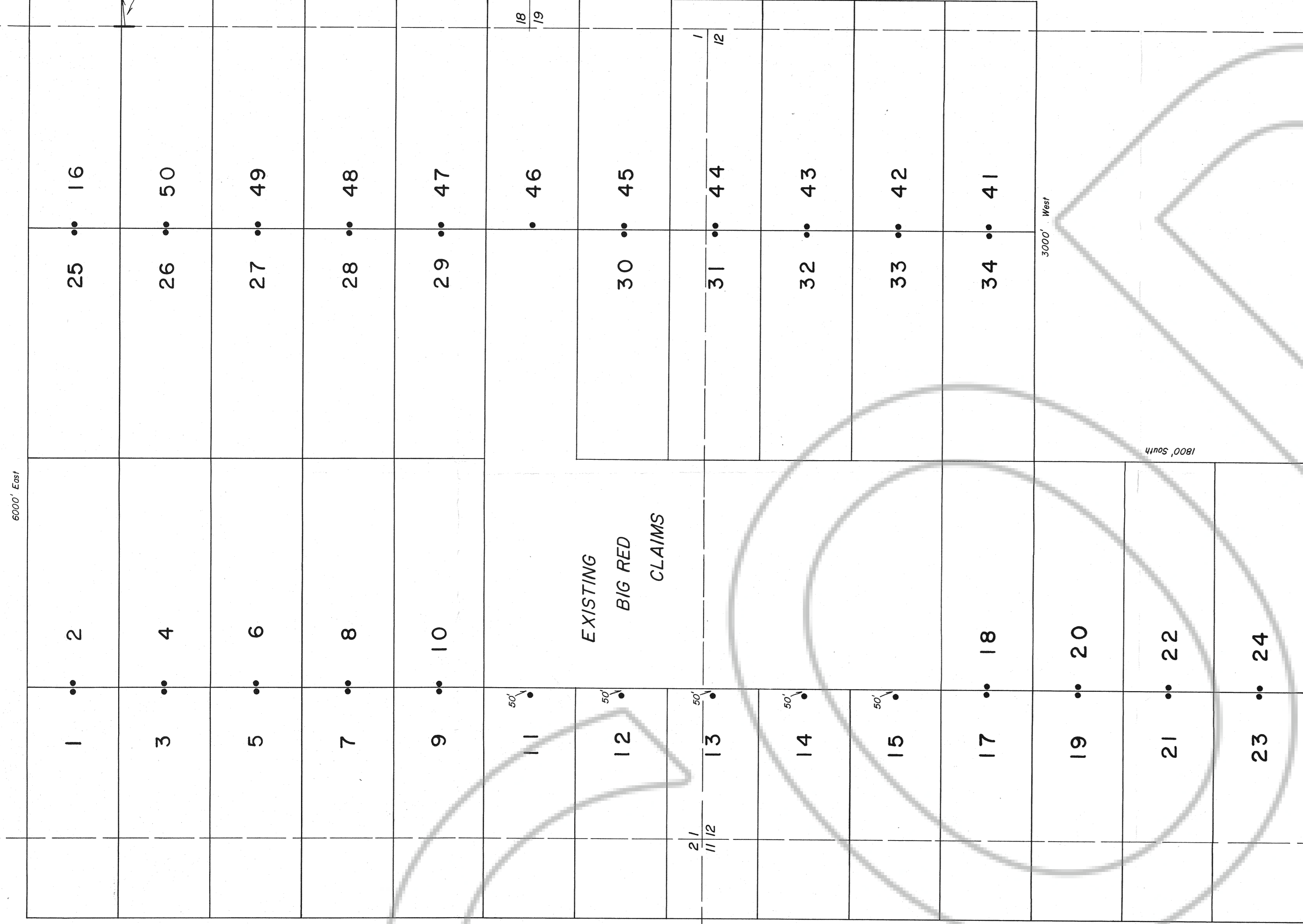


R48E

R49E



TIE  
S 88° 00' E 185'

6600' South

EXISTING  
BIG RED  
CLAIMS

8400' North

3000' West

1800' South

3000' West

T16N

**LOCATOR**

H. Walter Schull  
901 Walker Ave  
Reno, NV 89509

**LOCATION DATES**

4/25/88 BRE 1-15, 17-24, 34 and 41  
4/26/88 BRE 16, 25-33 and 42-50

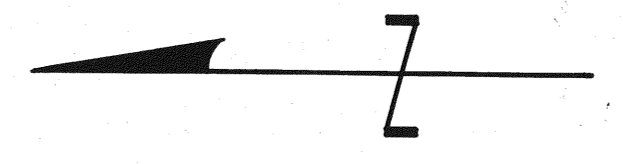
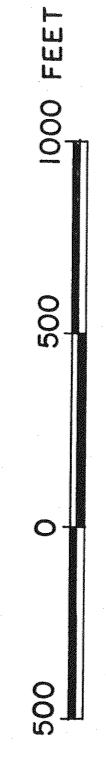
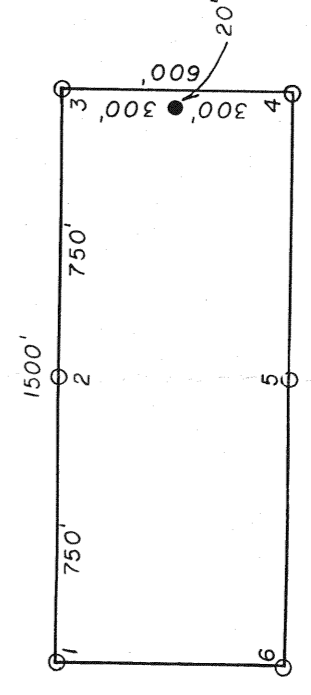
**TIE**

The NE corner BRE 50 bears N86E, 185'  
from the W 1/4 corner Section 18,  
T16N, R49E.

**NOTES:**

- All monuments are 3"x5' white PVC pipe
- All location monuments, shown as "•" are set 20' into claim, except BRE 11-15 are set 50' into claim.
- All claims measure 1500' x 600'

**TYPICAL CLAIM**



FILED AT THE REQUEST OF H. Walter Schull  
 on July 26, 1988 at 56 MINES BLDG. 1114  
 RECORDS OF EUREKA COUNTY, NEVADA, M. N. REBELETTI, RECORDER  
 File No. 120026 Fee \$ 660.00

**BRE (1-34, 41-50) LODE CLAIMS**  
 Sections 1, 2, 11, 12 T16N, R48E  
 Sections 18, 19 T16N, R49E  
 Eureka County, Nevada