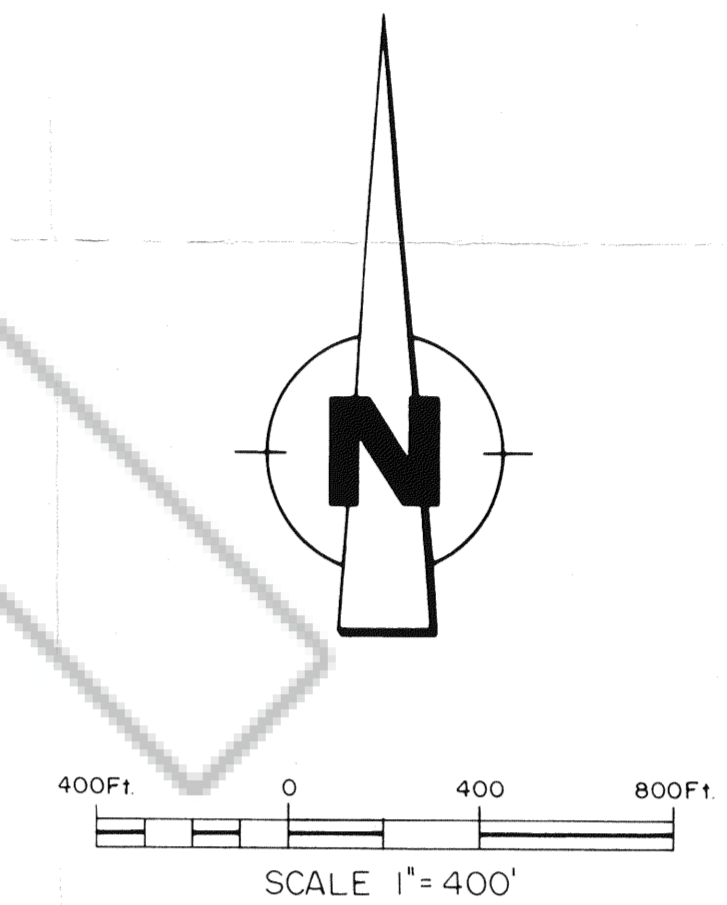
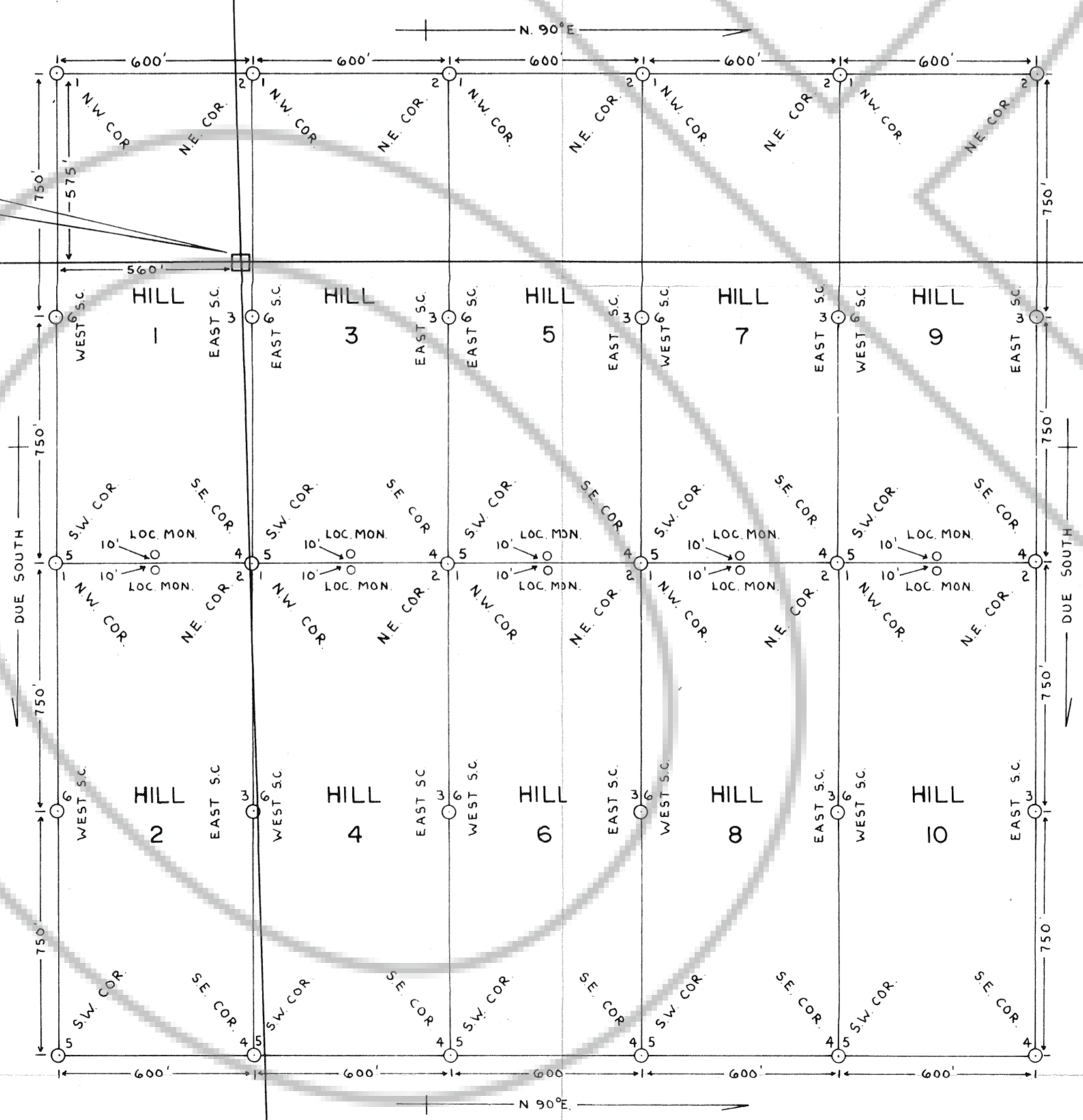


S3 S2



COMMON CORNER
T26N,R52E,S.2,3,10



FILED AT THE REQUEST OF *Discovery Consultants*
 on *Aug 2* 19 *88*, at *5:27* pm, *10* p.m.
 RECORDS DEPARTMENT, NEVADA M. N. REBELETTI, Recorder
 Fee \$ *150.00*

Map of the HILL Lode Mining Claims
 Situated in Sections 2,3,10&11,Township 26N,Range 52E.,
 Mineral Hill Mining District, Eureka County, Nevada.
 Located June 18,1988 by
 John Osterhagen as agent for;
 Brican Resources (U.S.) Inc.
 Box 795
 Vernon B.C.,Canada.
 VIT 6M7

MT HOPE 20-63

120380

S10 S11