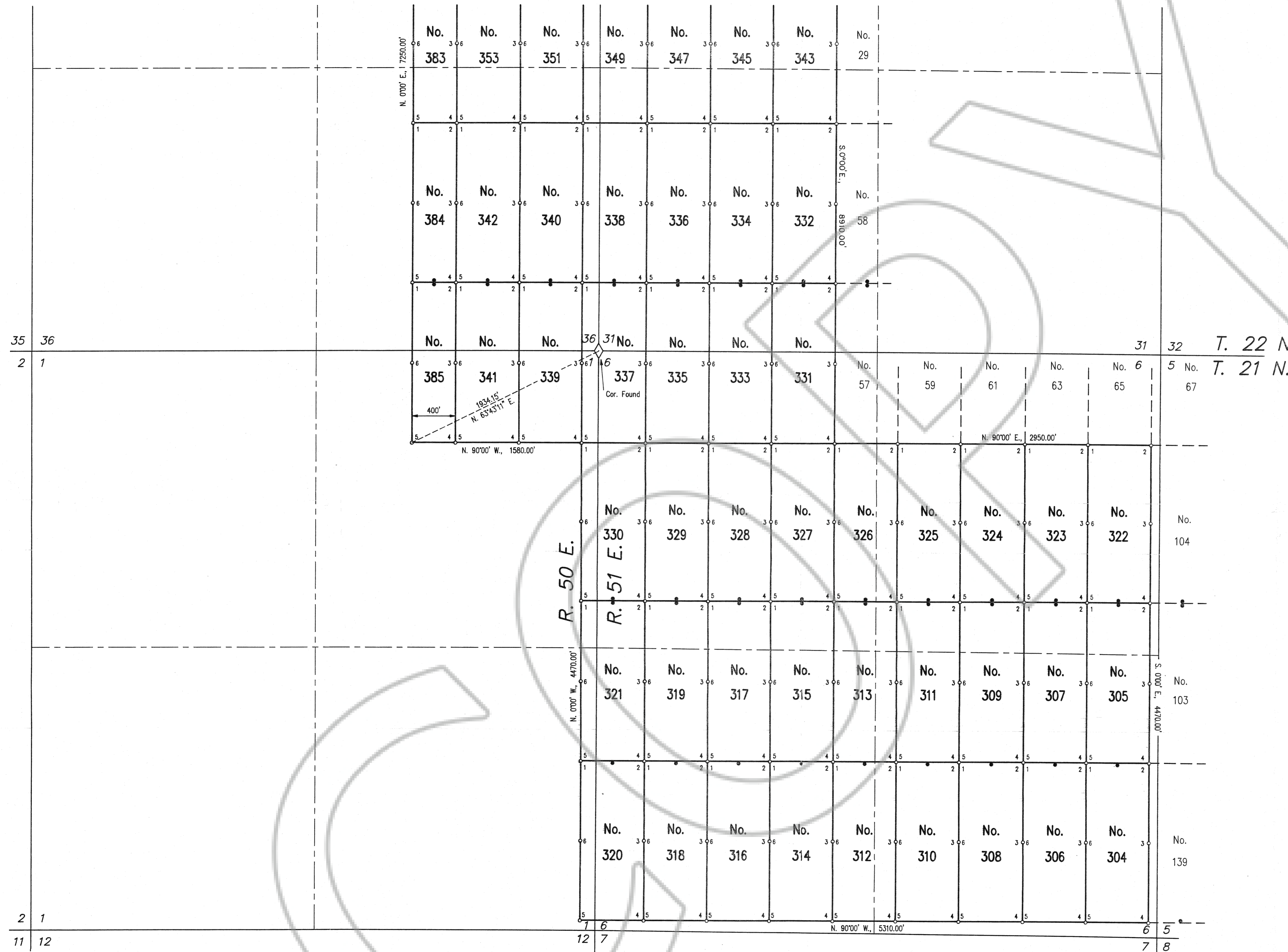


M.D.B. & M.



- NOTES:
1. All claims are 590' wide x 1490' long with Discovery Monuments 10' from end lines, except as shown and noted.
 2. At all Corners, Side Centers and Discovery Monuments are 3" diameter x 5' long posts with aluminum tags denoting the appropriate corners.
 3. ○ = Corner and Side Center posts.
● = Discovery Monuments.
 4. These claims are located by: Santa Fe Pacific Mining, Inc.
250 South Rock Blvd., Suite 100
Reno, Nevada 89502
 5. RMS No. 305, 307, 309, 311 & 313 thru 330 located on May 11, 1988.
RMS No. 304, 306, 308, 310, 312 & 331 thru 354 located on May 12, 1988.
RMS No. 355 thru 359 & 361 thru 380 located on May 13, 1988.
RMS No. 360 & 381 thru 385 located on June 2, 1988.
 6. There is a total of 82 claims.

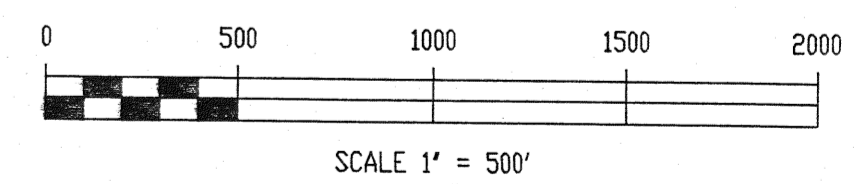
CERTIFICATION

I, Richard W. Forman, do hereby certify that this plat, consisting of 2 sheets, is a true and accurate map of a survey made under my supervision and direction between the 11th day of May and the 2nd day of June, 1988.

Richard W. Forman
Richard W. Forman, P.E., R.L.S.



FILED AT THE REQUEST OF *Santa Fe Pacific Mining*
on *Aug 10 1988* at *11 A.M.*
RECORDS OF EUREKA COUNTY, NEVADA M.N. REBAL.
File No. *120463* Fee \$ *615.00*



SHEET 1 OF 2

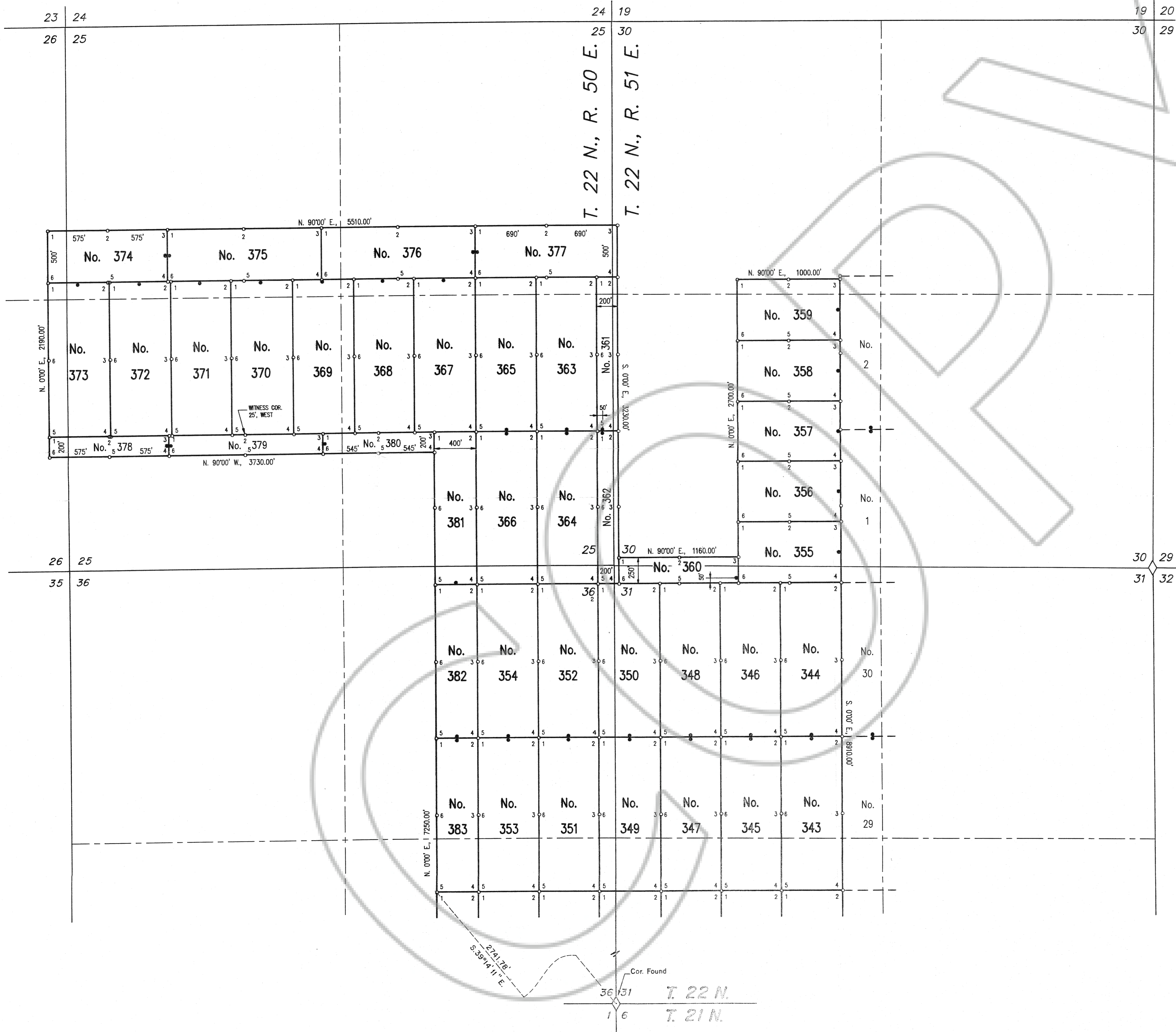
120463

SURVEYED & MAPPED
BY
BOUNDY & FORMAN, INC.
ELY, NEVADA
MAY & JUNE, 1988

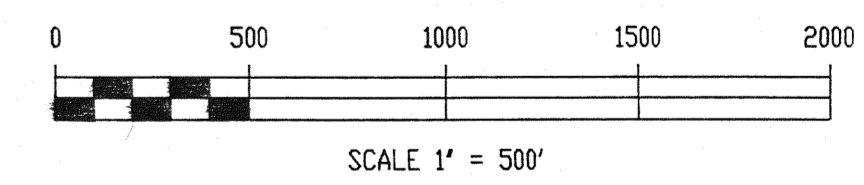
MAP SHOWING
RMS LODE MINING CLAIMS
IN
T. 21 & 22 N., R. 50 & 51 E., M.D.B. & M.
EUREKA COUNTY, NEVADA
FOR
SANTA FE PACIFIC MINING, INC.



M.D.B. & M.



Filed at the request of *Santa Fe Pacific Mining*
 on *Aug 2* 19*88* 4 mins past *11* A.M.
 EUREKA COUNTY, NEVADA
 120463
 Fee \$ *618.00*



SHEET 2 OF 2

MAP SHOWING
 RMS LODE MINING CLAIMS
 IN
 T. 21 & 22 N., R. 50 & 51 E., M.D.B. & M.
 EUREKA COUNTY, NEVADA
 FOR
 SANTA FE PACIFIC MINING, INC.

120463

SURVEYED & MAPPED
 BY
 BOUNDY & FORMAN, INC.
 ELY, NEVADA
 MAY & JUNE, 1988