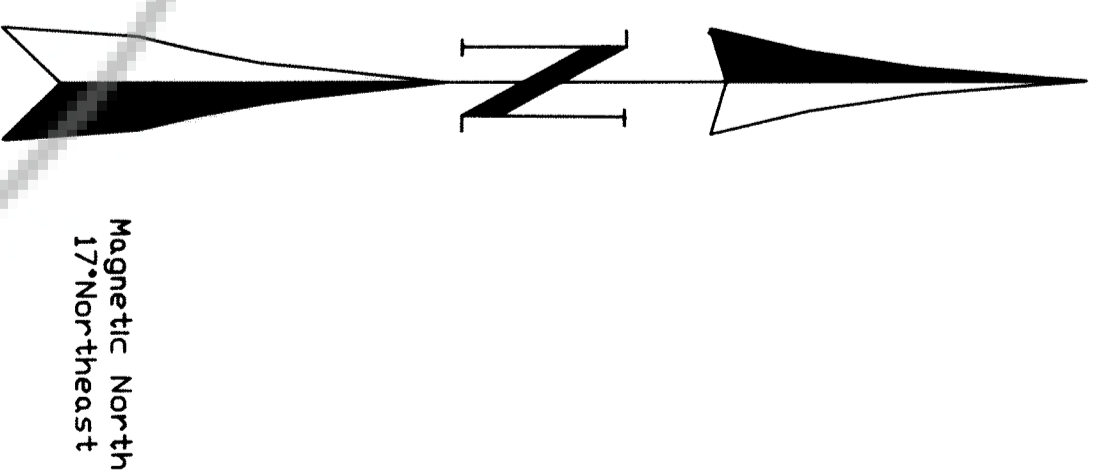
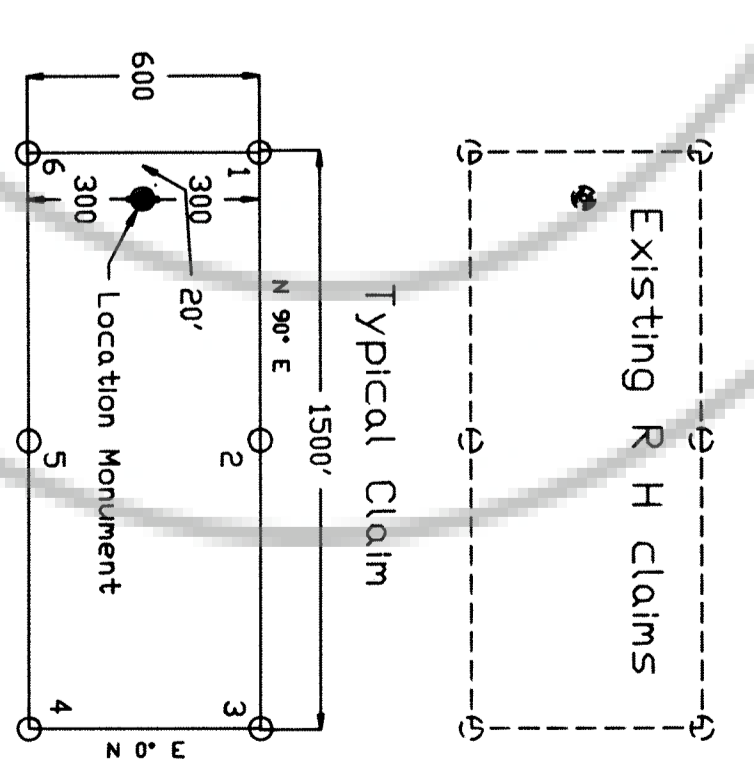


THIS MATERIAL IS FURNISHED BY PLACERDOME U.S. INC. KIND EXPRESSION OF OR REPRESENTATION OF ANY KIND U.S. INC. WARRANTS THAT THIS MATERIAL WAS PREPARED BY THE BEST OF HIS KNOWLEDGE AT THE TIME OF PREPARATION AND MAKES NO EXPRESS OR IMPLIED WARRANTY OF MERCHANTABILITY OR FITNESS FOR ANY PARTICULAR PURPOSE. PLACERDOME U.S. INC. EXPRESSLY DISCLAIMS LIABILITY FOR ANY ACTUAL OR INTERPRETATIVE ERRORS IN THE MATERIAL.



DRAWN: R Mulvey	DATE: 6/10/88	RED HILL CLAIMS FOR R H 32 - 37
DRAFTED: T. Doy	REVISIONS: P #163	Claim Locations FOR R H 32 - 37
MAP NO: P #163	PROJECT NO: P #163	Located May 15, 1988
Prepared:	SCALE: 1" = 300'	

FILED AT THE REQUEST OF *Placerdome U.S. Inc.*
 of *1666 3/19 88* at *37* mins. east *101W*
 RECORDS OF SUTTER COUNTY, NENADO N. N. RECORDS
 FILE NO. *150473*
 Fee \$ *22.00*