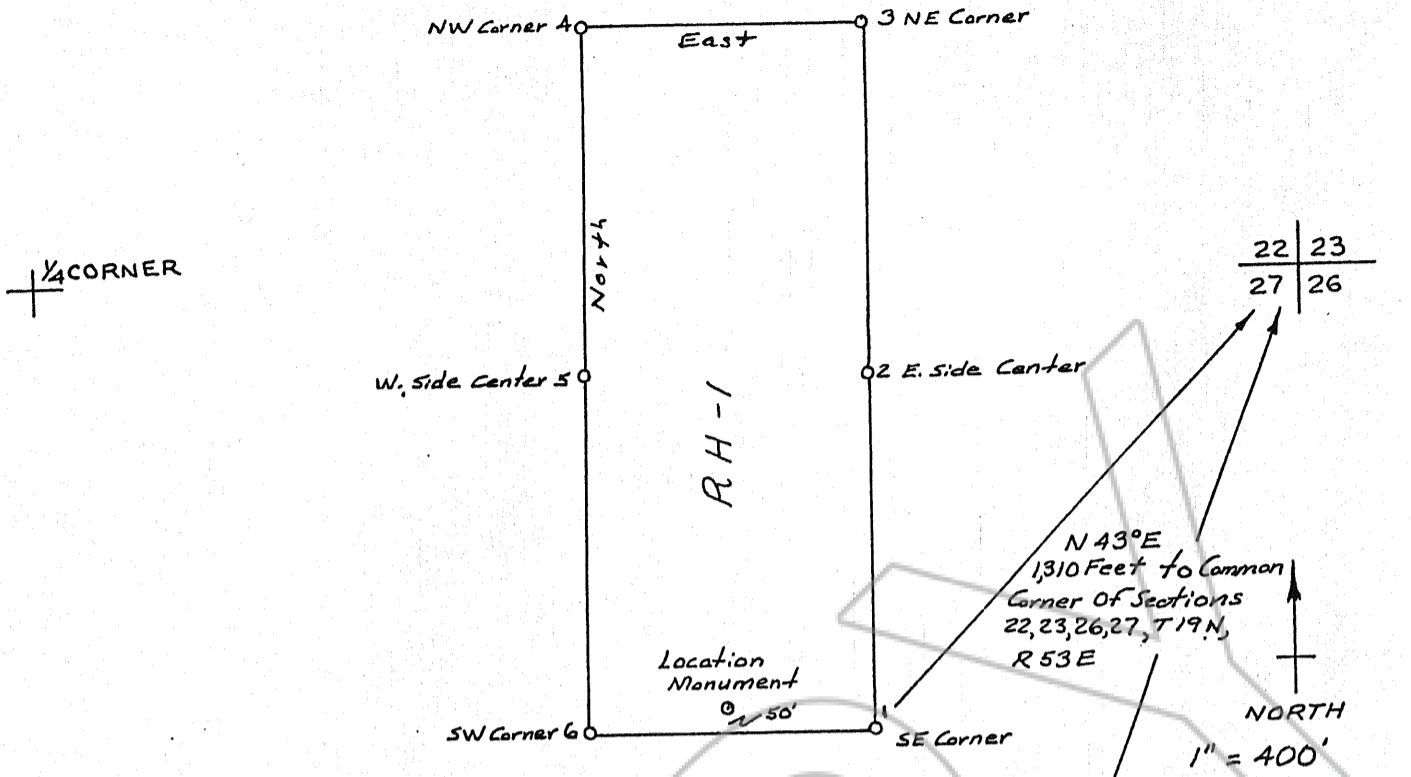
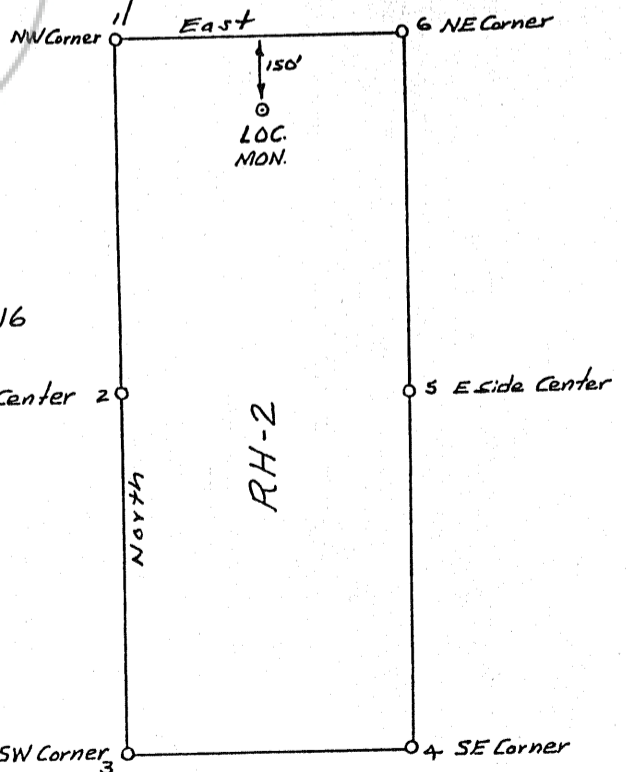


120705



RH-1 And RH-2  
 LODGE CLAIMS  
 EUREKA COUNTY, NEVADA  
 EUREKA MINING DISTRICT  
 Located By: Ruby Hill Mining Co  
 P.O. Box 693  
 Eureka Nevada 89316  
 Date: June 24, 1988



AMENDED LOCATION MAP

This Amended Location Map is being filed in order to correct certain information which was inadvertently left off of the original location map which was recorded in book \_\_\_\_\_ at page \_\_\_\_\_. File No. 119440

FILED AT THE REQUEST OF Ruby Hill Mining Co.  
 on Aug 11 19 88, at 26 mins, past 14: M.  
 RECORDS of EUREKA COUNTY, NEVADA M. N. REBALEATI, Recorder  
 File No. 120705 Fee \$ 15.00