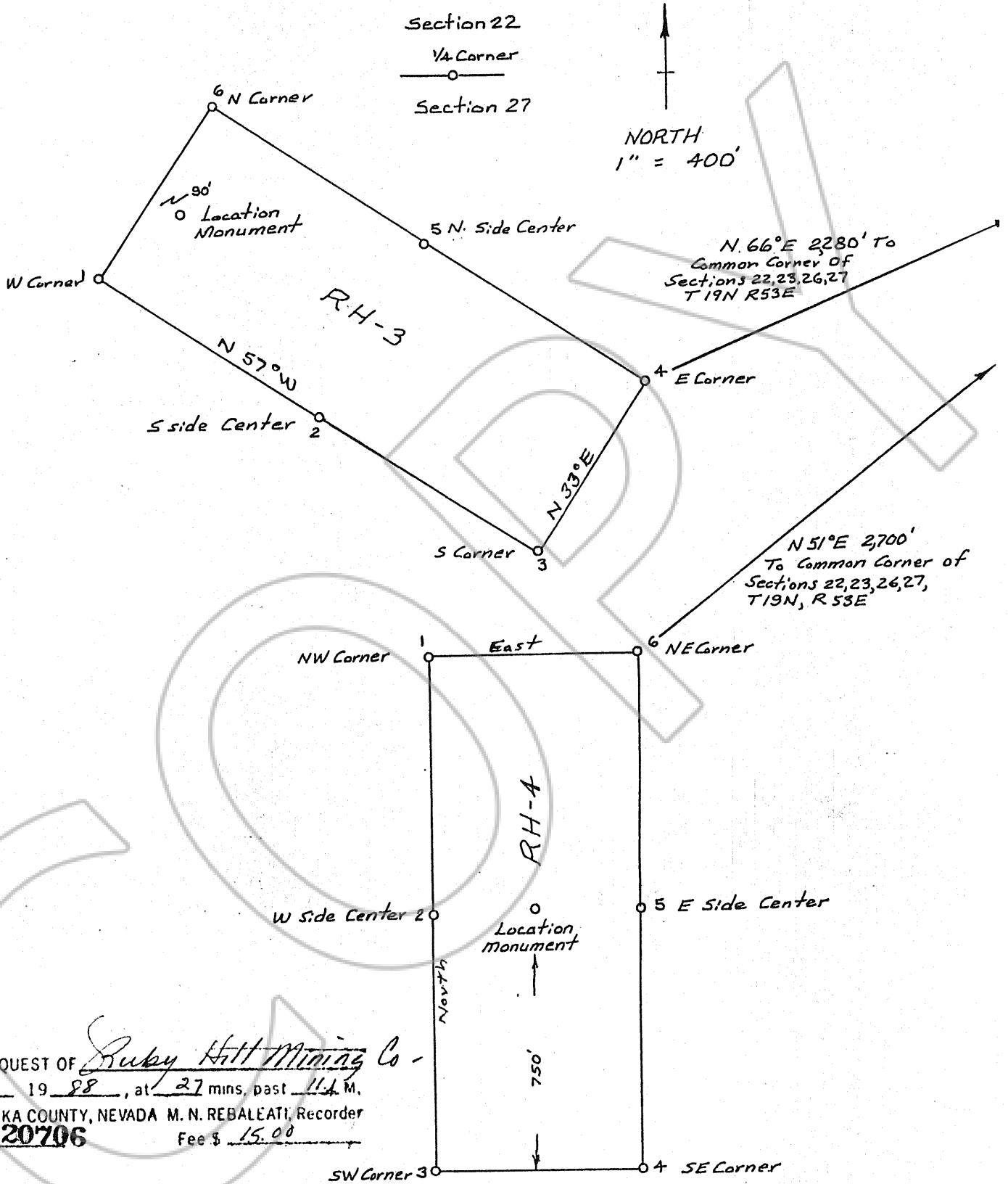


AMENDED LOCATION MAP

This Amended Location Map is being filed in order to correct certain information which was inadvertently left off of the original location map which was recorded in book _____ at page _____. File No. 119443



FILED AT THE REQUEST OF Ruby Hill Mining Co.
on Aug 11 19 88, at 27 mins. past 11 A. M.
RECORDS OF EUREKA COUNTY, NEVADA M. N. REBALEATI, Recorder
File No. 120706 Fee \$ 15.00

RH-3 And RH-4
LODE CLAIMS
EUREKA COUNTY, NEVADA
EUREKA MINING DISTRICT
Located By Ruby Hill Mining Co
PO Box 693
Eureka Nevada 89316
Date: June 24, 1988