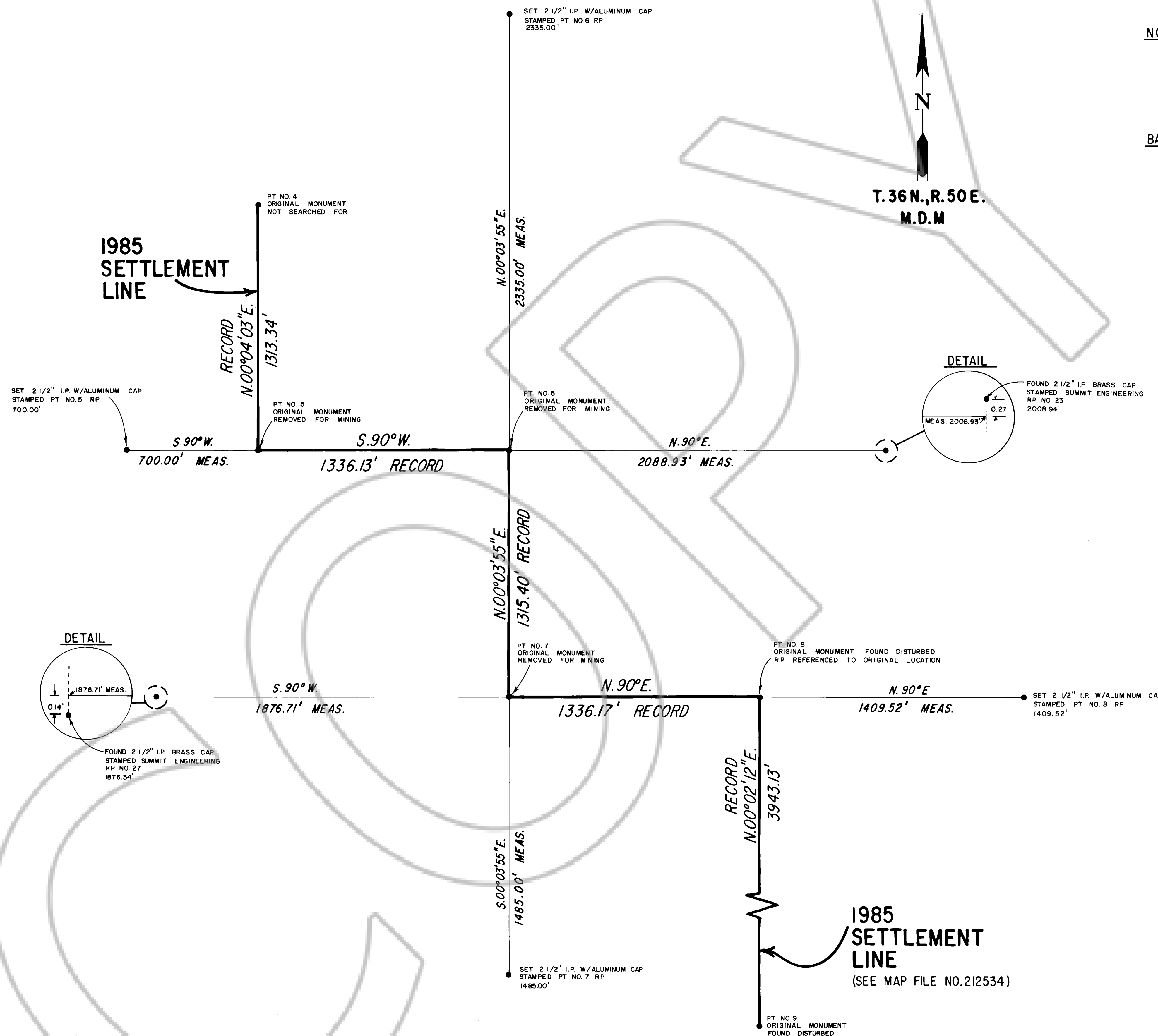


NOTE: REFERENCE POINT LOCATIONS WERE DETERMINED BY RADIAL STAKING FROM LOOPED TRAVERSE CONTROL STATIONS. CHECK TIES CONFIRM A HORIZONTAL ACCURACY OF 1 PART IN 40,000. ALL DIMENSIONS ARE MEASURED AND/OR RECORDED.

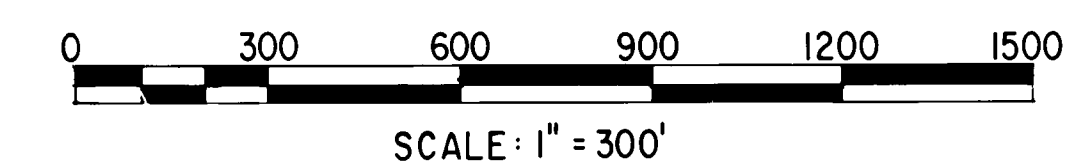
BASIS OF BEARING: ORIGINAL CONTROL TRAVERSE FOR THE 1985 SETTLEMENT LINE R.O.S. ELKO COUNTY MAP FILE NO. 212534. NOTE THAT THIS IS NOT THE SAME BASIS OF BEARING AS BARRICK MINE CONTROL.



SURVEYOR'S CERTIFICATE

I, MARK C. BOGE, RLS NO. 6196, STATE OF NEVADA, DO HEREBY CERTIFY THAT:

- I AM EMPLOYED BY BARRICK GOLDSTRIKE MINES INC. AND NEWMONT GOLD CO.
- THIS PLAT IS A TRUE AND ACCURATE REPRESENTATION OF BOUNDARY MONUMENTS FOUND AND SET DURING A SURVEY MADE IN THE SPRING OF 1988.
- THE SURVEY WAS MADE UNDER MY SUPERVISION AND THE MONUMENTS ARE SUFFICIENT FOR THE RETRACEMENT OF THIS SURVEY.
- THIS RECORD OF SURVEY PLAT IS FILED IN COMPLIANCE WITH NEVADA REVISED STATUTES, CHAPTER 625.330 THRU 625.350 INCLUSIVE.



RECORD OF SURVEY

1985 SETTLEMENT LINE
AND 1988 REFERENCE POINTS
FOR
BARRICK GOLDSTRIKE MINES INC.
AND
NEWMONT GOLD CO.

**EUREKA COUNTY
FILE DATA**

FILE NO. 257072
FILED AT THE REQUEST OF
Kennedy/Jenks/Chilton
DATE: 16 August, 19 88
TIME: 4:55 p.m.
Michael Schubert
EUREKA COUNTY RECORDER

**ELKO COUNTY
FILE DATA**

FILE NO. 257072
FILED AT THE REQUEST OF
Kennedy/Jenks/Chilton
DATE: 25 JULY, 19 88
TIME: 9:30 a.m.
Jerry C. Reynolds
ELKO COUNTY RECORDER

NO.	BY DATE	DESCRIPTION	CHK'D	APP'D

DATE: JULY 1988
DRAWN BY: SHR
CHK'D BY:
Kennedy/Jenks/Chilton
421 Court Street
(702) 738-2121
Elko, Nevada 89801
JOB NO.: 888028.00
DWG. NO.: 88024
SHEET: 1 OF 1