

- ◇ Found Standard Brass Cap Monument.
- △ Found 5/8" Rebar, Tag RLS 827.
- Set 5/8" Rebar, Tag RLS 827.
- 60E 60' Access and Public Utility Easement.

Basis of bearings for this Parcel Map is Parcel Map Document No. 114555 and Record of Survey, Document No. 104686.

#### OWNER'S CERTIFICATE

This is to certify that the undersigned, Salvatore Grasso and Betty Ann Grasso are the owners of record of Parcel "D" of Parcel Map Document No. 114555 of the East 1/2 of Section 17, T. 20 N., R. 53 E., M. D. B. & M., and have consented to the preparation and recordation of our reparcelling of Parcel "D" and do hereby reserve and set apart forever the easement for Eldorado Avenue.

*Salvatore Grasso* Salvatore Grasso  
*Betty Ann Grasso* Betty Ann Grasso

#### PLANNING COMMISSION APPROVAL

At a regular meeting of the Eureka County Planning Commission held on August 19, 1988, this map was approved for subdivision purposes pursuant to N.R.S. 278.461 to 278.469 inclusive.

*D.G. Rieck* Vice Chairman  
Eureka County Planning Commission  
*Jan Shangle* Clerk  
Eureka County Commission

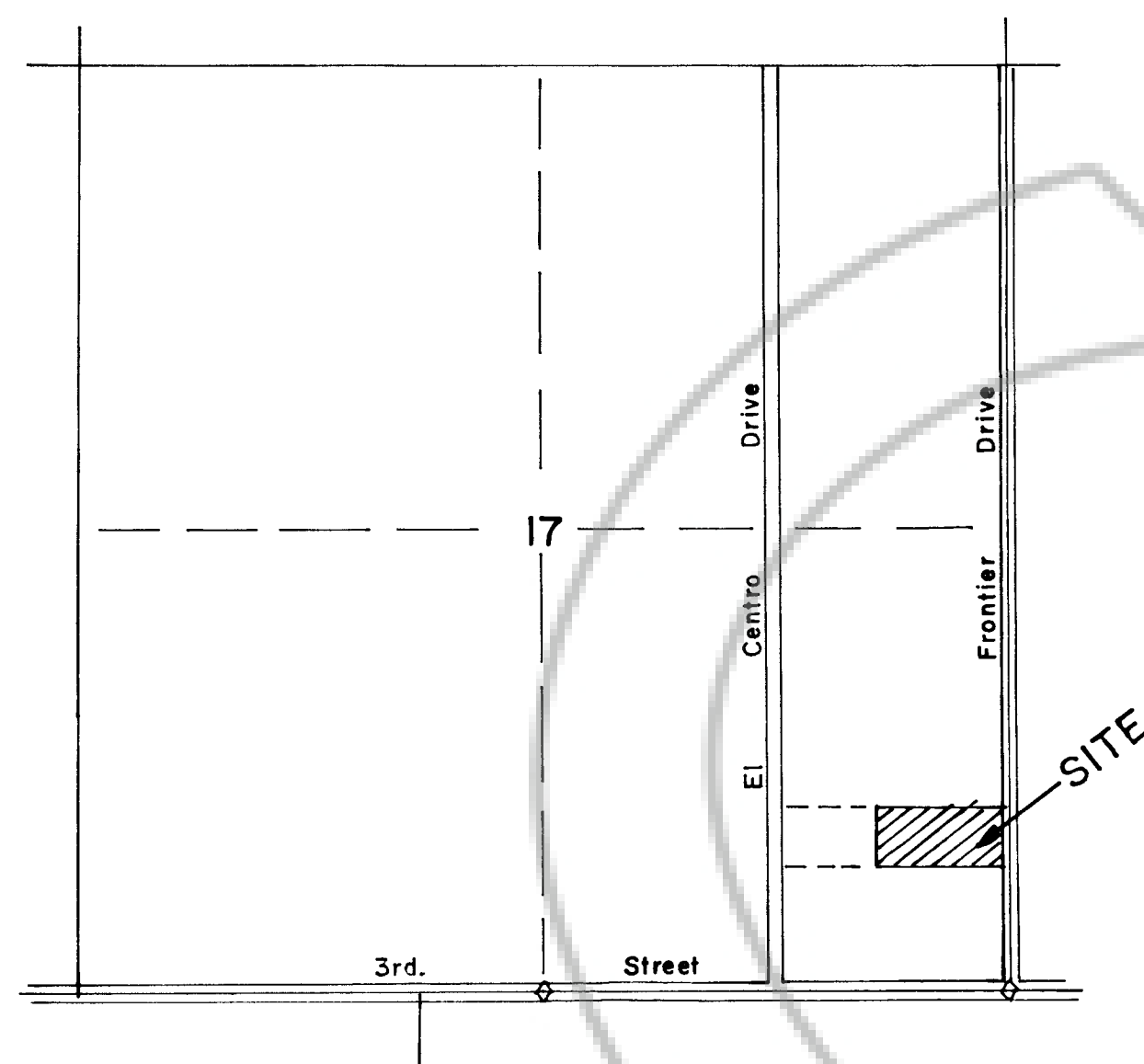
#### COUNTY COMMISSIONER'S APPROVAL

At a regular meeting of the Eureka County Commissioners held on August 19, 1988, this map, consisting of one sheet, was presented as a proposed parcel map of Parcel D, Document No. 114555 located in Eureka County, Nevada by Salvatore and Betty Ann Grasso.

*Lesley E. Grasso* Chairman  
Eureka County Commissioners  
*Jan Shangle* Clerk  
Eureka County

#### MAP AREA

Total area of this Parcel Map is 5.424± Acres.



1. That all parcel lines and easements remain as shown to the Planning Commission until the map is recorded.
2. That all requirements of government agencies with permit authority be met.
3. That the streets shown on this Parcel Map be provided in accordance with Eureka County specifications relating to County Roads and their acceptance.

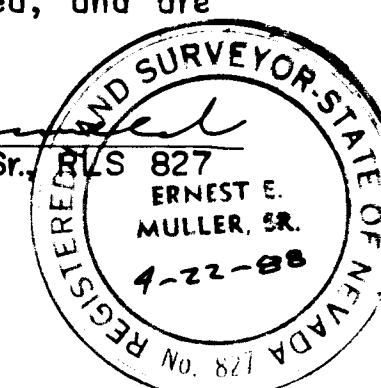
The parcels shown on this Parcel Map are in Flood Zone A as indicated on maps prepared by FEMA.

#### SURVEYOR'S CERTIFICATE

I, Ernest E. Muller, Sr., a Registered Land Surveyor in the State of Nevada, certify that:

1. This is a true and accurate representation of the lands surveyed by me at the instance of Earl Rasmussen.
2. The lands surveyed lie within the East 1/2 of Section 17, T. 20 N., R. 53 E., M. D. B. & M., and is Parcel "D" of Parcel Map No. 114555 and the survey was completed on the 19th. day of October, 1987.
3. This plat complies with the applicable state statutes and any local ordinances.
4. The monuments are of the character shown and occupy the positions indicated, and are sufficient to retrace this survey.

*Ernest E. Muller, Sr.* Ernest E. Muller, Sr.



#### RECORDER'S CERTIFICATE

File No. 120751 Fee: \$10.00  
Filed for record at the request of Ernest E. Muller, Sr. on this 24th day of Aug, 1988 at 35 minutes past 3p o'clock p.M., Official Records of Eureka County, Nevada.

*M.N. Roberts*  
Recorder

PARCEL MAP  
FOR  
SALVATORE & BETTY ANN GRASSO  
REPARCELLING OF PARCEL "D"  
OF PARCEL MAP, DOCUMENT NO. 114555  
E. 1/2 SEC. 17, T. 20 N., R. 53 E., M.D.B. & M.  
EUREKA COUNTY, NEVADA

BIG E, INC., 750 WEST PUEBLO ST., RENO, NV, 89509 88.04.19